



ASX, AIM and Media Release
19 July 2010

FORTE ANNOUNCES MAIDEN HIGH-GRADE JORC RESOURCE FOR MAURITANIA URANIUM PROJECT

Initial Indicated and Inferred Resource – 2Mlb of contained U₃O₈ at 704ppm

- **Maiden JORC resource estimate completed for Bir En Nar Uranium Project, Mauritania (West Africa)**
 - **Initial Indicated and Inferred Resource of 1.33Mt @ 704ppm U₃O₈ for 2.06Mlbs of contained U₃O₈ (100ppm cut-off), comprising:**
 - **Indicated Resource of 0.55Mt @ 886ppm U₃O₈ for 1.07Mlbs of contained U₃O₈**
 - **Inferred Resource of 0.78Mt @ 575ppm U₃O₈ for 0.99Mlbs of contained U₃O₈**
 - **Mineralisation remains open down-dip in many areas with evidence for another mineralised zone between the Northern and the Southern Zones**
 - **Resource follows 5,575m diamond and Reverse Circulation ('RC') drilling programme completed earlier this year**
-

International uranium company Forte Energy NL (**ASX/AIM: FTE; "Forte Energy" or "the Company"**) is pleased to report a maiden JORC Code compliant mineral resource estimate for its 100%-owned **Bir En Nar Uranium Project**, located in **Mauritania**, West Africa.

The resource, which was independently estimated and verified by Coffey Mining Pty Ltd, comprises an Indicated and Inferred Resource of **1.33Mt grading 704ppm U₃O₈** for **2 million pounds of contained U₃O₈** (using a 100ppm U₃O₈ cut-off).

This is the Company's first JORC resource in Mauritania and complements the initial JORC resource inventory of 17.7Mt @ 296ppm U₃O₈ (11.6 million pounds of contained U₃O₈) announced last year for its Firawa Uranium Project in the Republic of Guinea.

Key features of the Bir En Nar resource are its exceptional grade and the fact that it remains open in several areas, with potential to expand relatively quickly with additional drilling.

Commenting on the maiden resource, Mark Reilly, Managing Director, Forte Energy said: "*Bir En Nar is a high grade deposit which remains open at depth in several areas, including evidence for another mineralised zone between the Northern and the Southern Zones. The next drilling campaign will target these areas as well as improve the data from the RC holes which could not be incorporated in this initial resource statement.*"

FORTE ENERGY NL ACN 009 087 852

ASX / AIM CODE: FTE, Telephone: +618 9322 4071, Fax: +618 9322 4073

"Forte Energy considers this to be a base number for the mineral resource. The independent consultant has not used the results from the gamma logging carried out in conjunction with the 2007 RC drilling programme. Forte Energy is planning further work at Bir En Nar including further drilling to verify the data which we believe will increase both the tonnage and the grade of the deposit.

"Bir En Nar has provided us with a good platform as we continue our strategy to build up several high grade resources in our Mauritania portfolio," Mr Reilly added. "We look forward to the RC drilling results from our second priority target, Bir Moghreïn, later this Quarter and to recommencing drilling at Bir En Nar to lay the foundations for our next JORC resource statement."

Bir En Nar Uranium Resource

The resource is summarised below using a range of different cut-off grades:

Bin En Nar Uranium Project, Mauritania Resource Statement -15July 2010 Reported above various lower grade cut-offs Reported using a Dry Bulk Density on 2.69t/m ³ Rotated Ordinary Kriged Estimate Using 2m Cut U ₃ O ₈ Composites Parent Cell Dimensions of 5m X by 20m Y by 10m Z				
Cut Off (ppm)	Tonnes	U ₃ O ₈ (ppm)	Kg U ₃ O ₈	Lb U ₃ O ₈
Inferred				
100	780,000	575	449,000	990,000
200	748,000	593	443,000	977,000
300	588,000	684	402,000	886,000
350	530,000	723	383,000	844,000
400	462,000	774	357,000	787,000
Indicated				
100	550,000	886	488,000	1,076,000
200	526,000	920	484,000	1,067,000
300	510,000	941	480,000	1,058,000
350	496,000	958	475,000	1,047,000
400	480,000	977	469,000	1,034,000
Combined Indicated and Inferred				
100	1,330,000	704	936,000	2,064,000
200	1,273,000	728	927,000	2,044,000
300	1,098,000	803	882,000	1,944,000
350	1,025,000	837	858,000	1,892,000
400	942,000	878	826,000	1,821,000

Bosse Gustafsson is the Competent Person responsible for the Drilling Assay Database, QA/QC validation and density measurements. Neil Inwood is the Competent Person responsible for the resource estimation and classification.

Drilling through the Bin En Nar deposit is predominantly spaced at 35m intervals in a south-south-west direction. The drilling database comprises a total of 50 diamond drill holes and 45 RC drill holes which were used to define the geometry and grade of the mineralisation.

The majority of drill holes were collared at an orientation of approximately 230° (UTM) and have a dip of approx 50° to 60°. The location of the diamond and RC drill collars in the vicinity of the main zone of mineralisation is shown in Figure 1.

The maiden resource has been estimated using chemical assays as the primary dataset for the RC and diamond drill holes. The diamond core was halved by diamond saw for assaying. The RC samples were collected in a cyclone then riffle split to obtain a 1/8th sample for assaying.

An Auslog total gamma probe was also used to measure U₃O₈ content in the RC holes. This tool was calibrated at the Pelindaba testing facility in South Africa and operated by professional

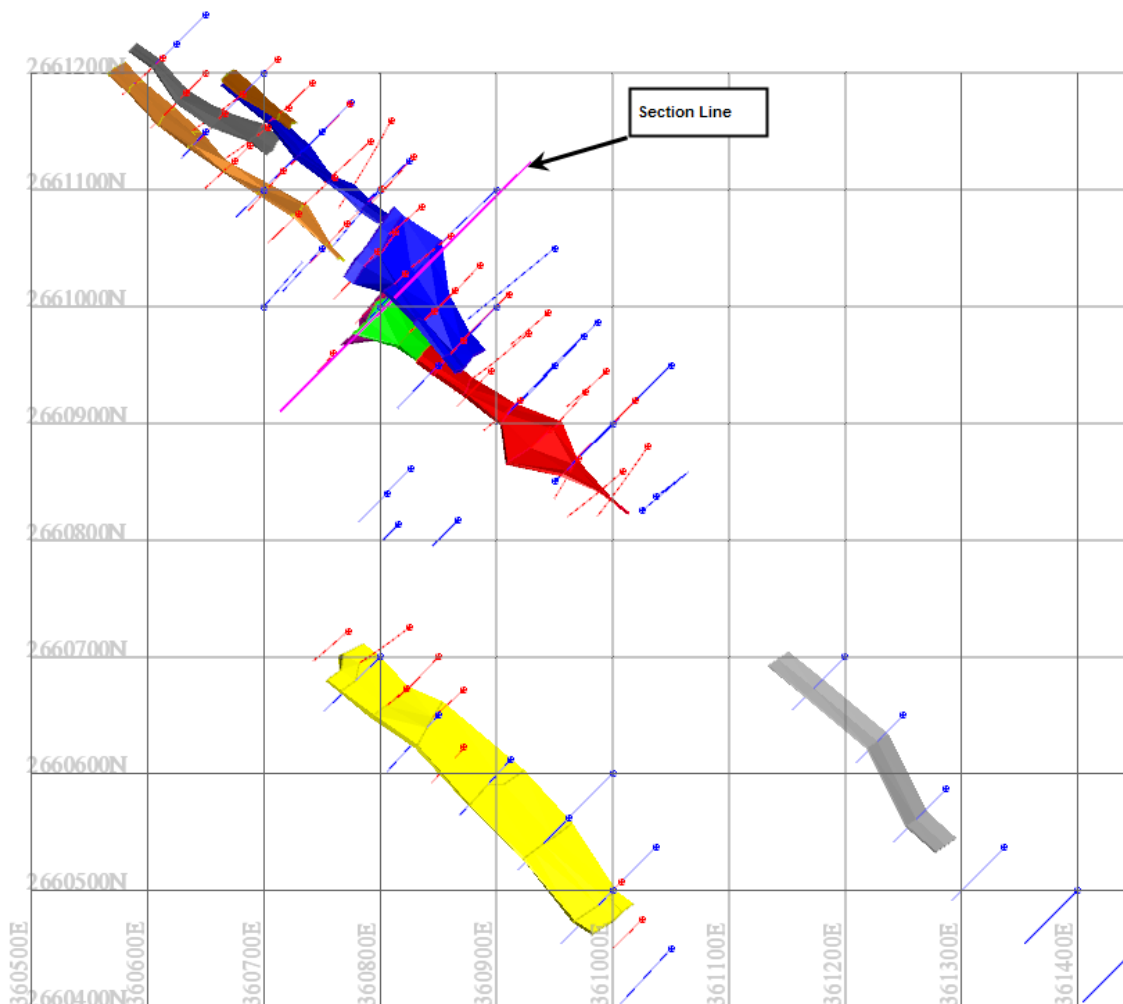
consultants based in Botswana. The Company notes that total gamma eU_3O_8 logging of Auslog probe indicates the potential for an upgrade in the grade of some of the RC holes (which constitute 42% of the drilling data), often by a factor of two times to the current chemical data, over similar length intervals.

Further work is underway to determine if this effect is due to a calibration issue with the tool used, and/or a sampling effect of the RC drilling. Separate spectrometer radiometric logging of the diamond holes produced similar results to that of the diamond chemical data. The chemical assays have been used as the base case for grade reporting from the RC drill holes until it can be demonstrated that the RC radiometric data is reporting correctly.

Chemical uranium assays were completed by ALS Chemex (Mali) using ICPMS method ME-MS61 or Genalysis (Perth- Australia) using ICPMS.

Chemical uranium assay results make up 96% of the composite data used in the mineralised zone (461 - 1m assays). Where there were no chemical assays, eU_3O_8 spectrometer data was used for the diamond holes (18, 1m composites) and one intersection of the RC total gamma eU_3O_8 data was also included (2, 1m composites).

Figure 1
Bin En Nar Uranium Deposit
Drilling Location Plan and Type
(Diamond Drilling-red; RC-blue)



The mineralisation zone interpretation was constructed based on a nominal 100ppm U_3O_8 drill hole grade with a minimum down-hole interval of 2m. The bulk of the mineralised domains dip steeply towards the north-north-east and are depicted in Figure 2.

The raw assay grades were composited to a 2m down-hole interval, with any residuals (i.e. samples less than 1.2m) added to the preceding interval using length weighting. Statistical analyses on the 2m U₃O₈ composites were completed prior to estimation. Variography and neighbourhood testing were conducted as inputs into grade estimation.

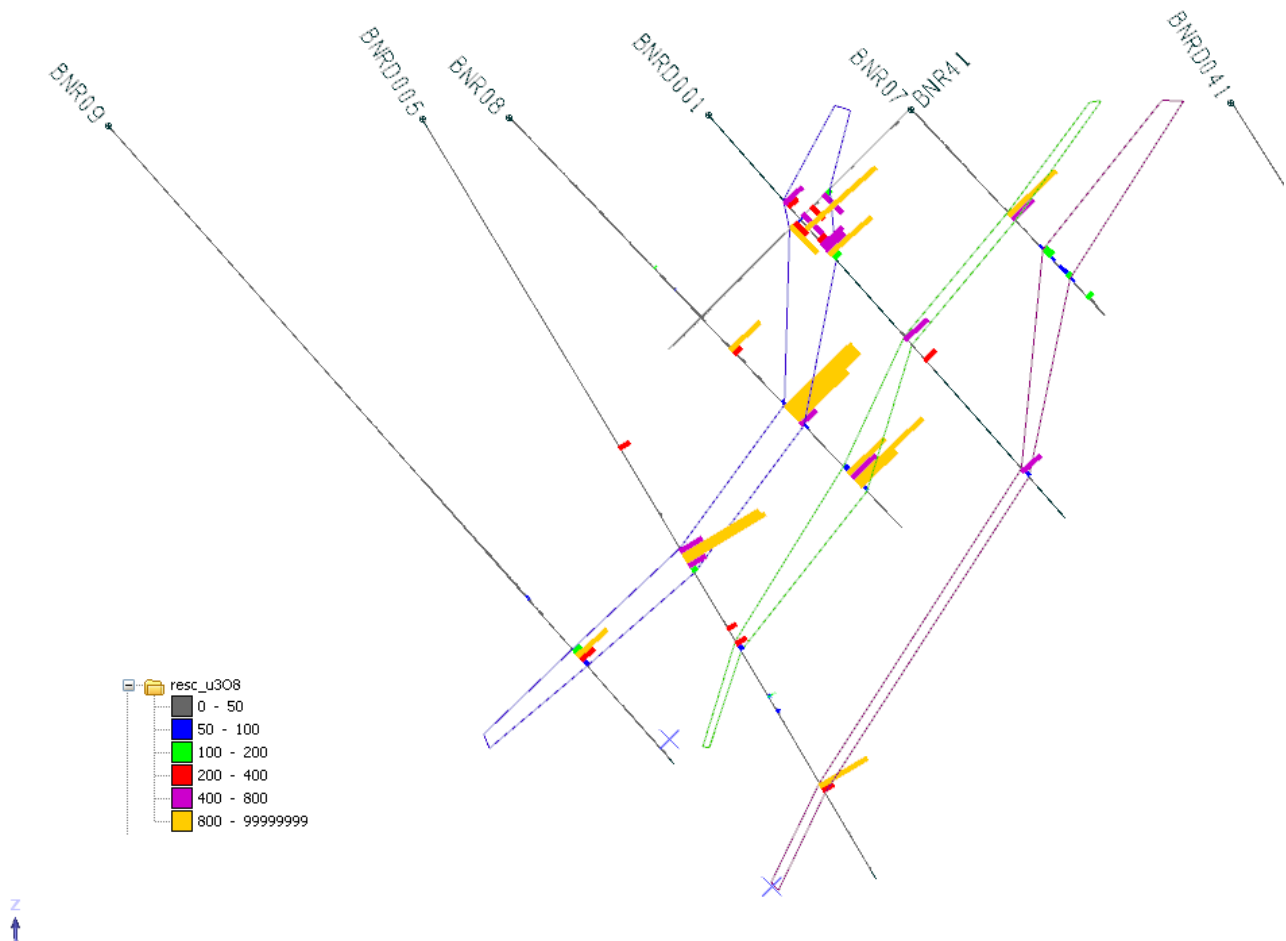
High grade cuts for U₃O₈ were applied to the 2m composite data within the mineralisation domain prior to estimation. The high grade cut was selected based on an assessment of distribution statistics, including frequency distribution plots and ranked grade charts. A 4,000ppm top cut was applied to the composites for the Northern Zones (resulting in a 5% decrease in grade for the 5 composites cut) and 1,800ppm U₃O₈ for the Southern Zone (resulting in an 11% decrease in grade for the 4 composites cut).

The method used to obtain the U₃O₈ grade estimates was Ordinary Kriging using the cut 2m composites. Parent cell dimensions of 20m Y by 5m X by 10m RL were used with sub-celling to 5m Y by 0.3125m X by 2.5m RL to enable adequate volume resolution.

An in-situ dry bulk density (ISBD) on 2.69t/m³ was applied to the mineralised zones based upon the average value of 845 water immersion density readings taken by Forte personnel.

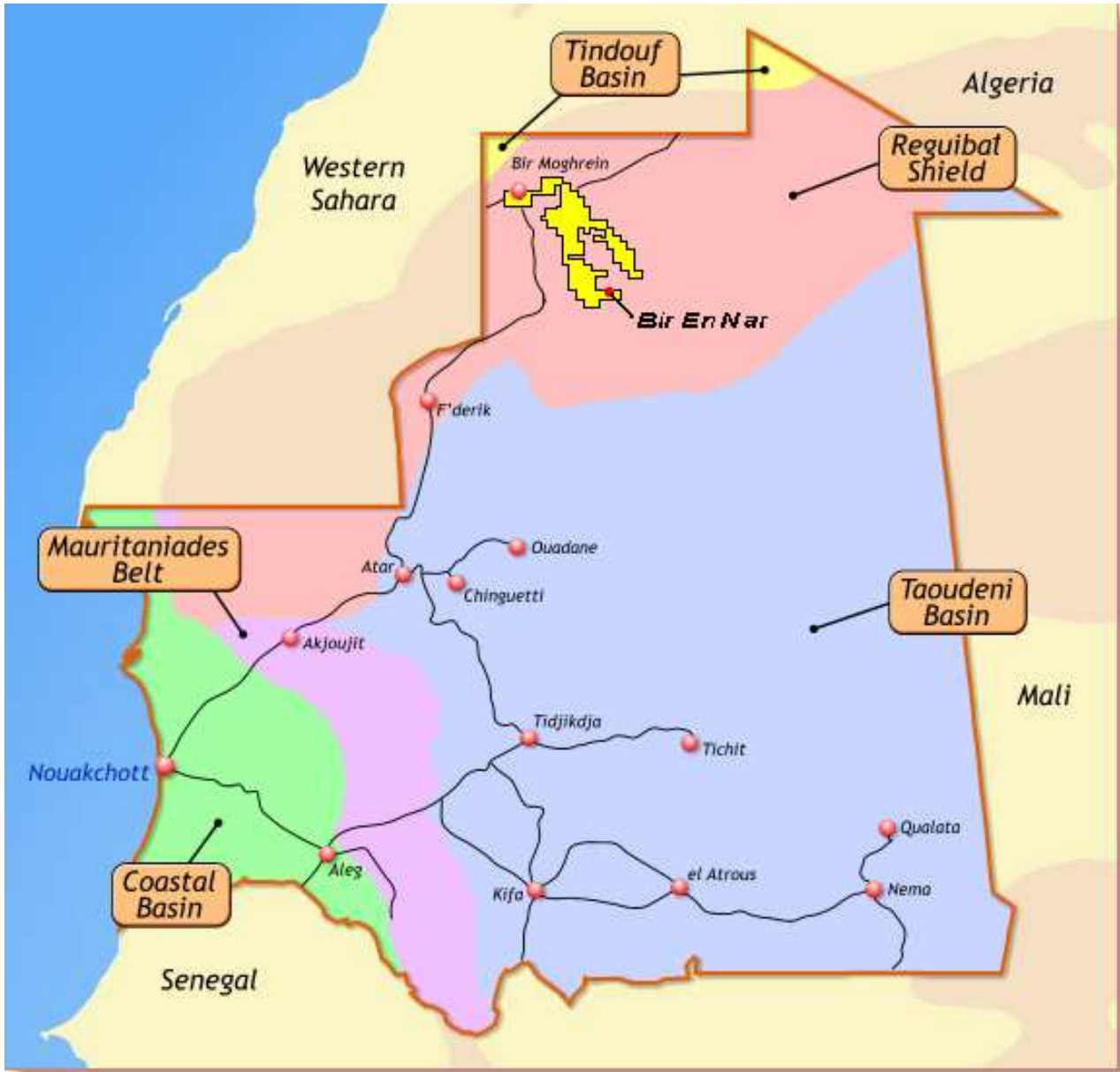
Resource classification was developed from the confidence levels of key criteria including drilling methods, geological understanding and interpretation, sampling, data density and location, grade estimation and quality. The current resource is reported as Inferred and Indicated. Mineralisation was extended up to 25m along strike of known drilling and no more than 40m down dip of known drill intercepts.

Figure 2
Bin En Nar Uranium Deposit
Mineralisation Interpretation Section Showing U₃O₈ Grade Bars



The mineralisation remains open down dip in many areas; and there is evidence for another mineralised zone to the southwest of the main zones which have currently been modelled. However, the quantity of the drill hole data was not sufficient to allow inclusion of this zone in the Resource estimate.

Figure 3
Forte Energy's exploration permits in Mauritania



Mark Reilly
Managing Director

For further information contact:

Mark Reilly, Managing Director
Forte Energy N.L.

Tel: +44 (0) 203 300 0187

Alastair Stratton/Tim Graham
Matrix Corporate Capital LLP

Tel: +44 (0) 203 206 7000

Conduit PR
Jos Simson/Emily Fenton

Tel: +44 (0) 207 429 6603

Stuart Laing
RFC Corporate Finance Ltd
(AIM Nominated Adviser to the Company)

Tel: +61 (0) 8 9480 2506

Note:

The Mineral Resource at Bir En Nar is based on information compiled by Mr. Bosse Gustafsson who is employed by Forte Energy NL and Mr. Neil Inwood who is employed by Coffey Mining Ltd. Mr. Gustafsson last visited the Bin En Nar site in March 2010. Personnel from Coffey Mining visited the site from March 9 to 17, 2010.

Mr. Gustafsson and Mr. Inwood have sufficient experience which is relevant to the style of mineralisation and type of deposit under consideration and to the activity which they have undertaken to qualify as a Competent Person as defined in the 2004 Edition of the "Australasian Code for Reporting of Mineral Resources and Reserves".

The information in this report that relates to the Mineral Resource at Firawa in Guinea is based on information compiled by Mr. Bosse Gustafsson of Forte Energy NL and Mr. Doug Corley of Coffey Mining Ltd. Mr. Gustafsson and Mr. Corley have sufficient experience which is relevant to the style of mineralisation and type of deposit under consideration and to the activity which they have undertaken to qualify as a Competent Person as defined in the 2004 Edition of the "Australasian Code for Reporting of Mineral Resources and Reserves".

Mr. Gustafsson is a member of the European Federation of Geologists a Recognised Overseas Professional Organisation ("ROPO"). Mr Bosse Gustafsson is a full time Technical Director of Forte Energy NL and is responsible for exploration activities in Mauritania and Guinea. Mr. Gustafsson, Mr. Inwood and Mr. Corley consent to the inclusion in this report of the matters based on their information in the form and context in which it appears.