



28 October 2013

QUARTERLY REPORT

FOR PERIOD 30 September 2013

(ARK: code AHK)

OPERATIONAL HIGHLIGHTS

- Ark Plans to Drill its Mt Porter and Frances Creek gold projects in the Northern Territory's highly prospective Pine Creek region.
- Ark Plans to Drill its Babinda Project

PROPOSED DRILLING

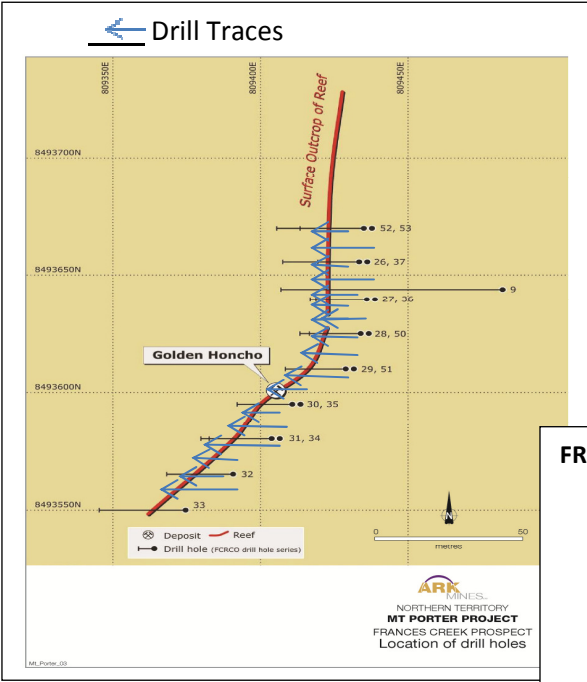
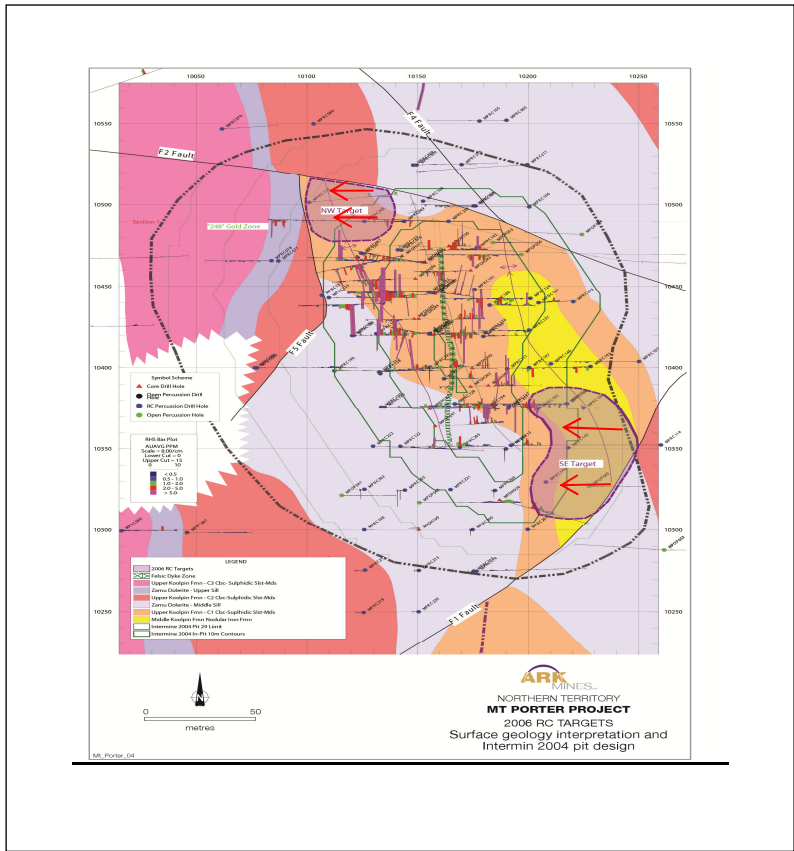
DRILLING

- Drilling infill at Frances Creek NT
- Drilling at Elaine NSW
- Drilling at Mt Porter NT

Mt PORTER

- 2 by 80m angled HQ diamond holes in the NW target zone
- 2 by 80m angled HQ diamond holes in the SE target zone
- All core to be assayed for Gold Grades as well as metallurgical testing with a view to improving grade, tonnes and recovery

MT PORTER DRILL LOCATIONS



FRANCES CREEK DRILL LOCATIONS

- FRANCES CREEK**
- Targeting the oxide zone less than 20m vertical depth from surface
 - Infill drilling - 20 by 15m angled RC holes targeting 8m vertical depth
 - Infill drilling - 20 by 30m angled RC holes targeting 15m vertical depth
 - 20 costeans to test the near surface Gold values of the Gold Reef

ARK LACHLAN FOLD BELT TENEMENTS

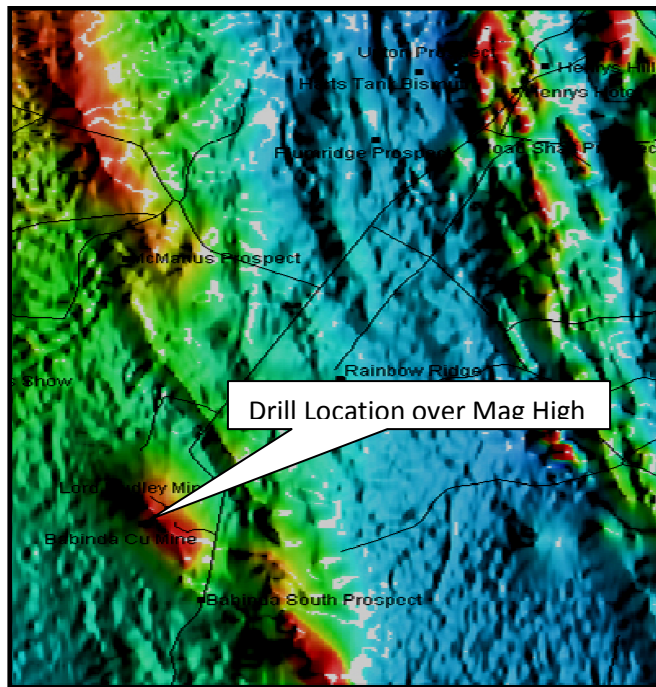
BABINDA

In late 2011 a 600m RC program was undertaken at **Babinda** and was designed to test the gravity high that AHK surveyed in June 2011. The Gravity anomaly lies directly in the centre of a large oval-shaped magnetic anomaly.

The shallow RC holes, which have shown “large surface Mineralised Haloes” indicate that there is potential for higher grade results at depth, and importantly, additional targets near the Lord Dudley Mine. The drill results confirm that the gravity anomaly correlates with the drill results.

It is therefore important to understand the full extent of the Lord Dudley Gravity anomaly. so a gravity ground crew will be required initially to close out the anomaly. Further to this 5, 120m RC drill holes will be drilled across the anomaly to determine the geochemical signature as per the Elaine’s ominous signature.

Figure 1 Babinda Magnetic Anomaly



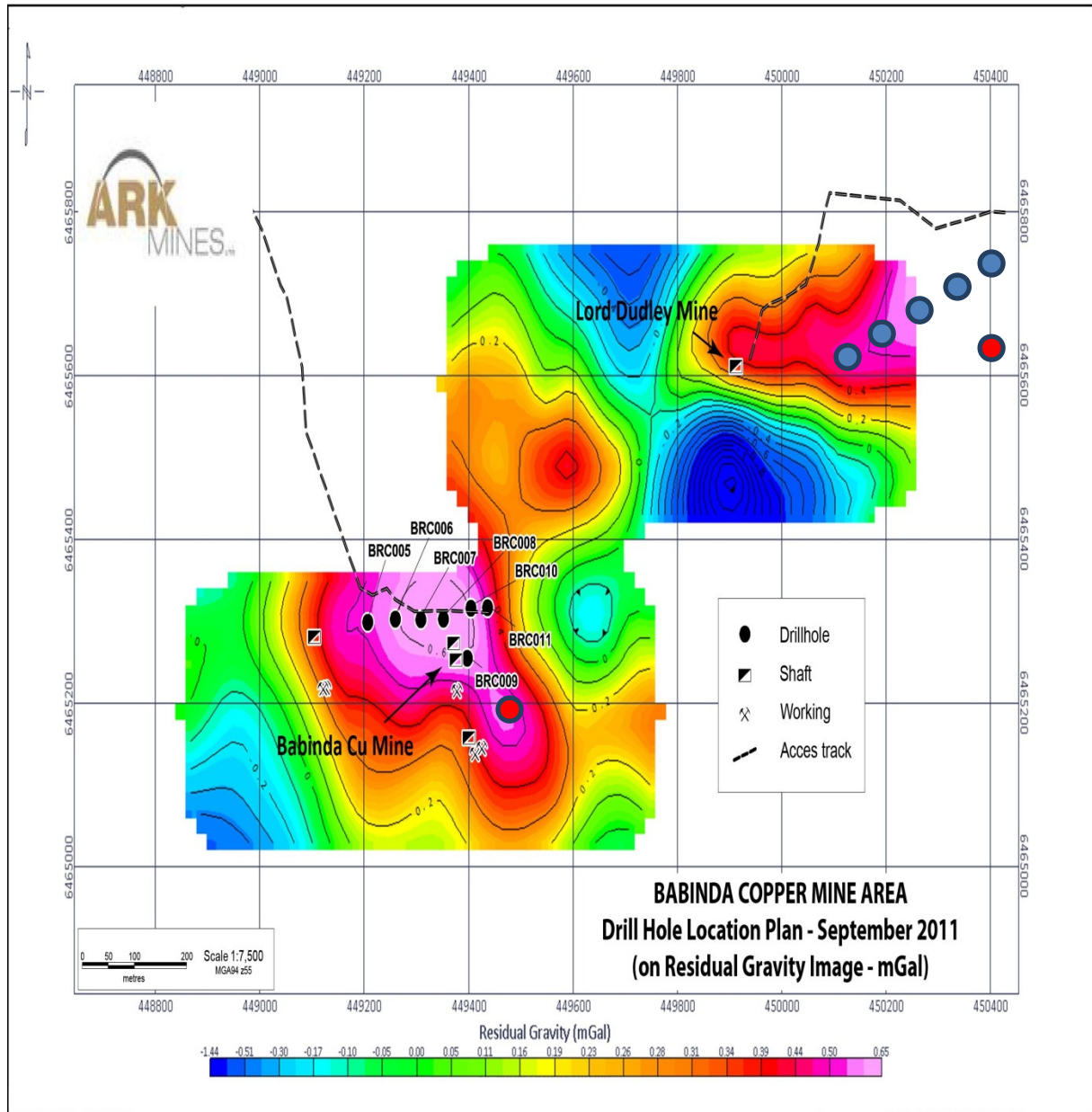


Figure 2 Babinda Gravity map, and proposed drill holes

-  Proposed 120m RC Holes
-  Proposed 300m Diamond Holes



Mining Activities During the Quarter

No Mining activities relating to exploration were carried out in the quarter ended 30 September 2013.

The information in this announcement that relates to Exploration Results, has been compiled by Roger Jackson BSc, Grad Dip Fin Man, who is a Member of The Australasian Institute of Mining and Metallurgy and who has more than five years experience in the field of activity being reported on. Mr Jackson is a director of the Company. Mr Jackson has sufficient experience, which is relevant to the style of mineralisation and type of deposit under consideration and to the activity, which he is undertaking to qualify as a Competent Person as defined in the 2012 Edition of 'Australasian Code for Reporting of Exploration Results, Mineral Resources and Ore Reserves'. Mr Jackson consents to the inclusion in the announcement of the matters based on his information in the form and context in which it appears. Resources and reserve calculations were provided by Runge Limited.

Note: Runge Limited who purchased the assets of Resource Evaluations Pty Ltd have reviewed the documentation relating to the Mount Porter resource and have confirmed that this resource estimation conforms to the reporting guidelines of the JORC Code (2004).