

## Extensive, Structurally Related Gold in Soil Anomalies (to 0.69 g/t) and High Grade Gold in Rock Chips (to 16.5 g/t) Demonstrated at the Wasio Prospect

Quintessential Resources Ltd (ASX:QRL) is pleased to announce the assay results from soil sampling of the Wasio Prospect on Fergusson Island, Milne Bay Province, Papua New Guinea.

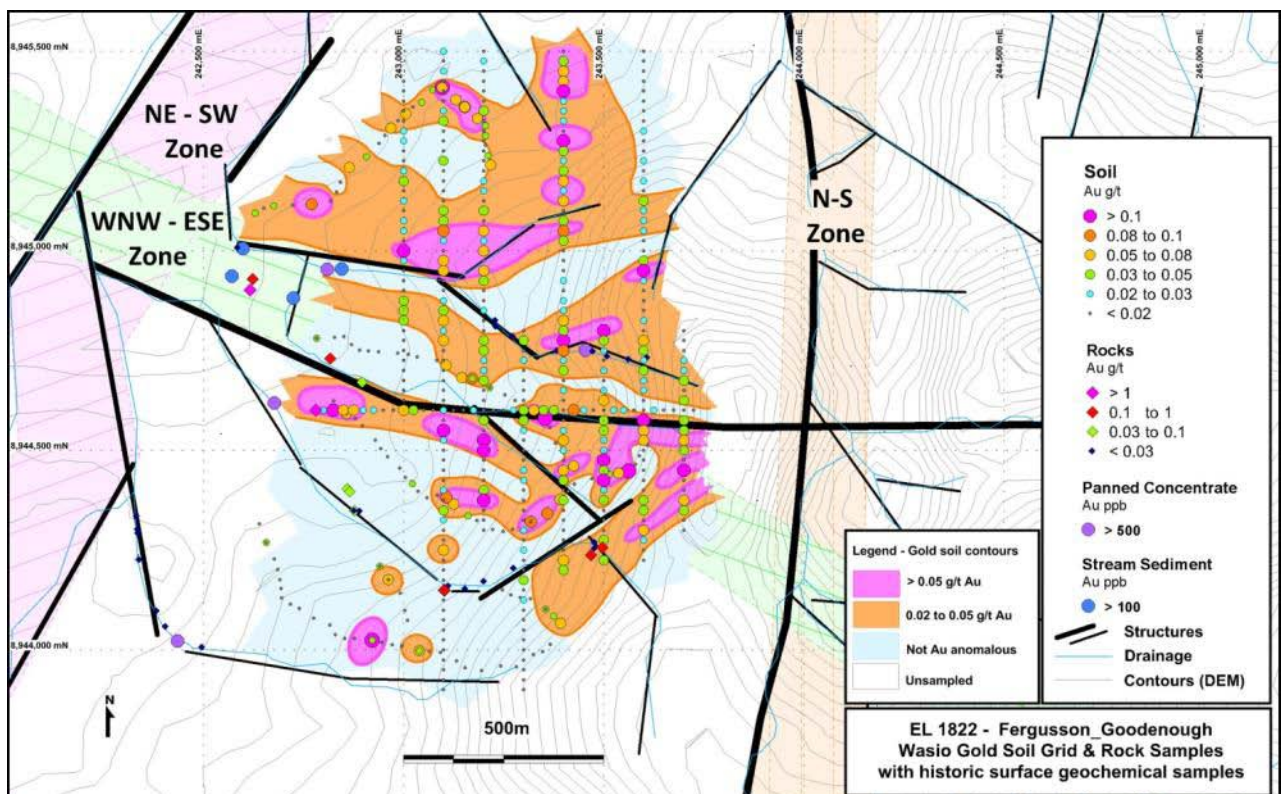
Managing Director Paige McNeil stated:

Quintessential Resources' grid based soil sampling at the Wasio Prospect was resoundingly successful and demonstrated 3 major, structurally discrete zones with multiple higher grade internal gold sectors. The total anomalous area (>0.02 g/t gold) is about one and a half square kilometres (1.5 km<sup>2</sup>) and it is open to the east over an eight hundred metre (800m) interval.

The soil grid and gold anomalies are located at/south of the nexus of three (3) major crustal level structures (trending NE-SW, N-S and WNW-ESE), that produce a triangular zone about 1,500 metres per side. The soil anomaly envelope has a WNW-SSE axis that is about 1,200 metres long and is between 1,000 metres wide at the NW end and 700m wide at the SE end. The higher grade internal zones however, have been interpreted to trend E-W to ENE.

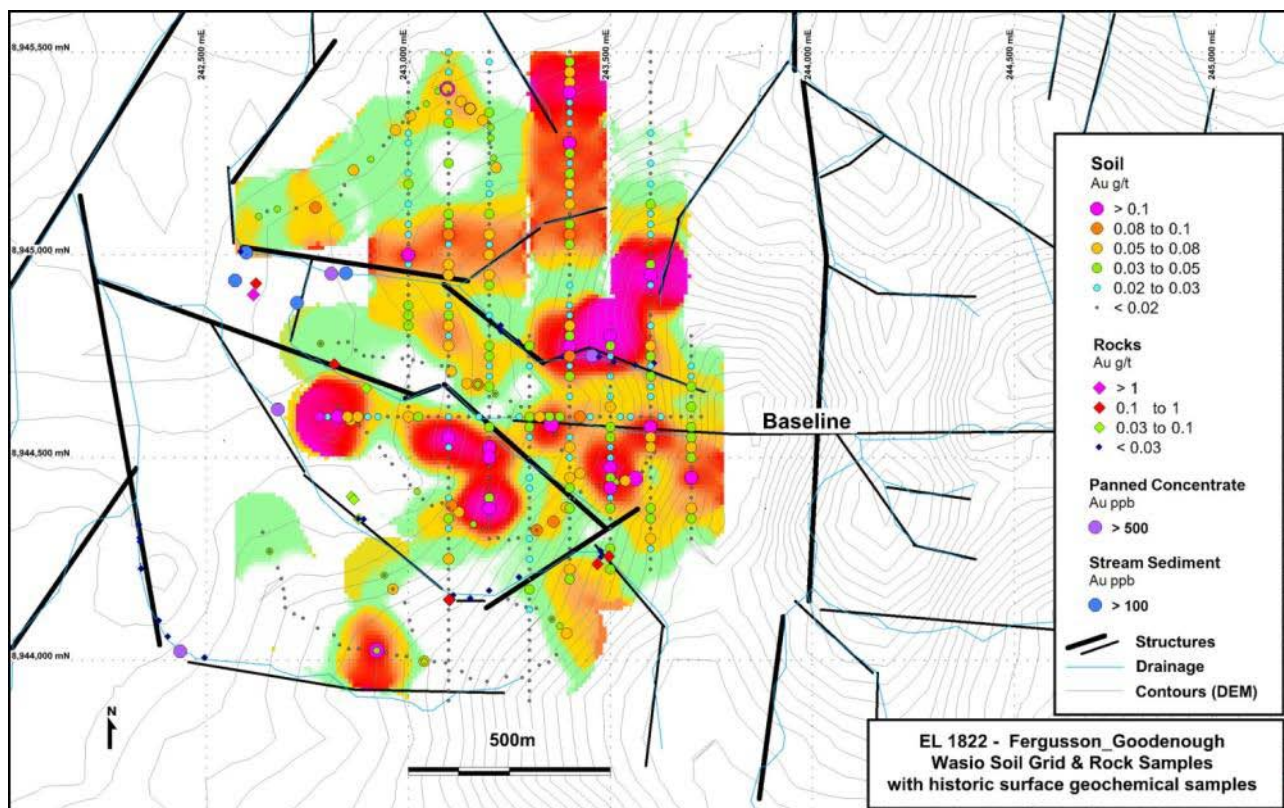
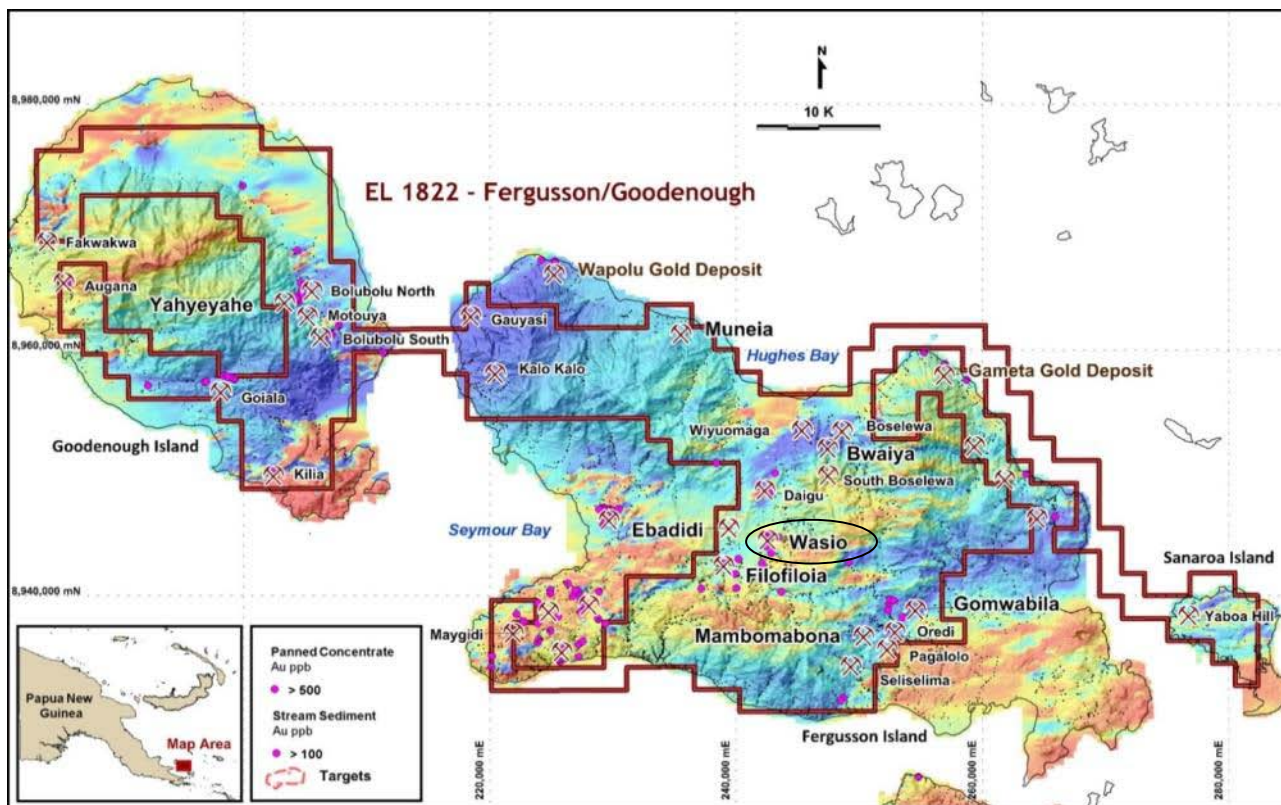
The peak float rock chip sample assayed 16.5 g/t gold, the peak outcrop channel assayed 0.96 g/t gold and strong evidence of epithermal textures was noted within the granitic host, but from limited samples.

Wasio is located about 4 to 5km ENE of the Filifilolia Prospect, where exploration recently showed another excellent and cohesive gold in soil anomaly. The Filifilolia anomaly is quasi NE trending with an irregular shaped core to five hundred metres (500m) long and about two hundred metres (200m) wide, reinforcing the excellent prospectivity of this unexplored and undrilled gold district.

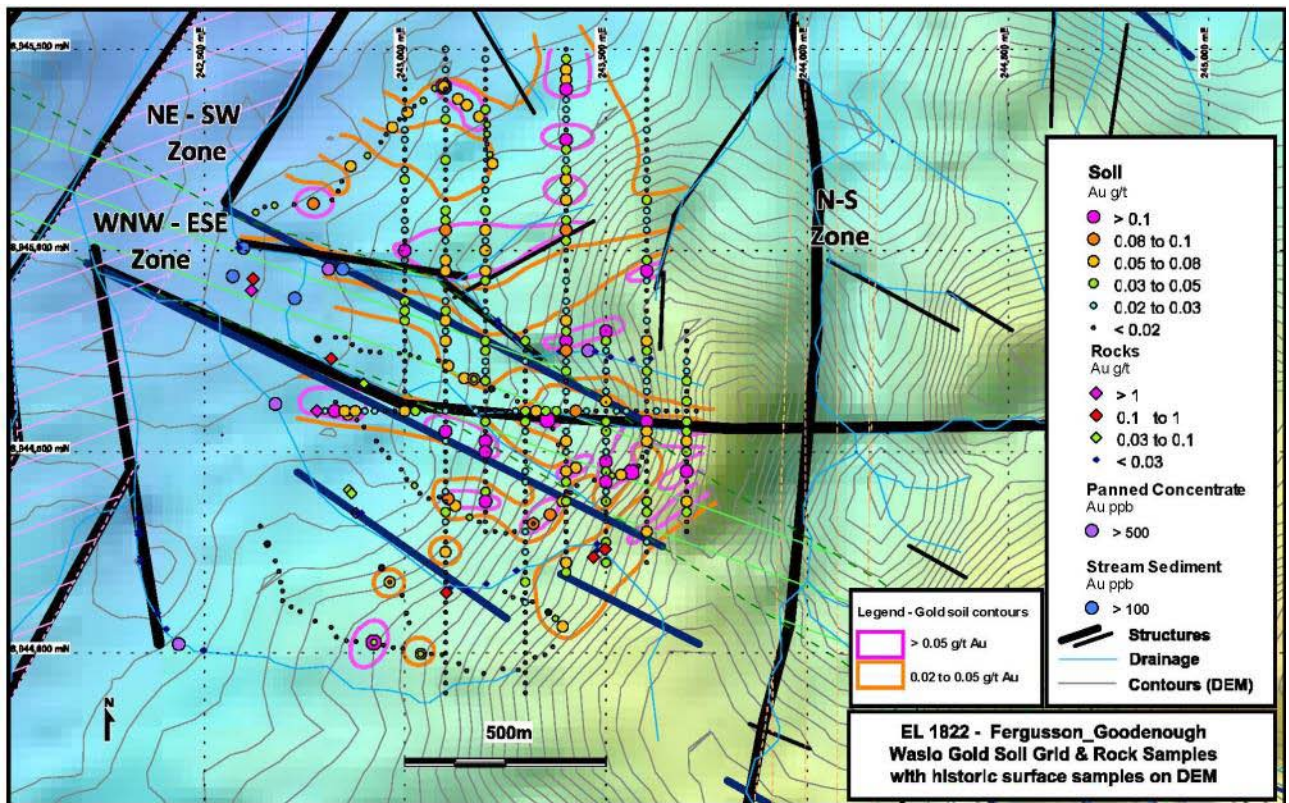
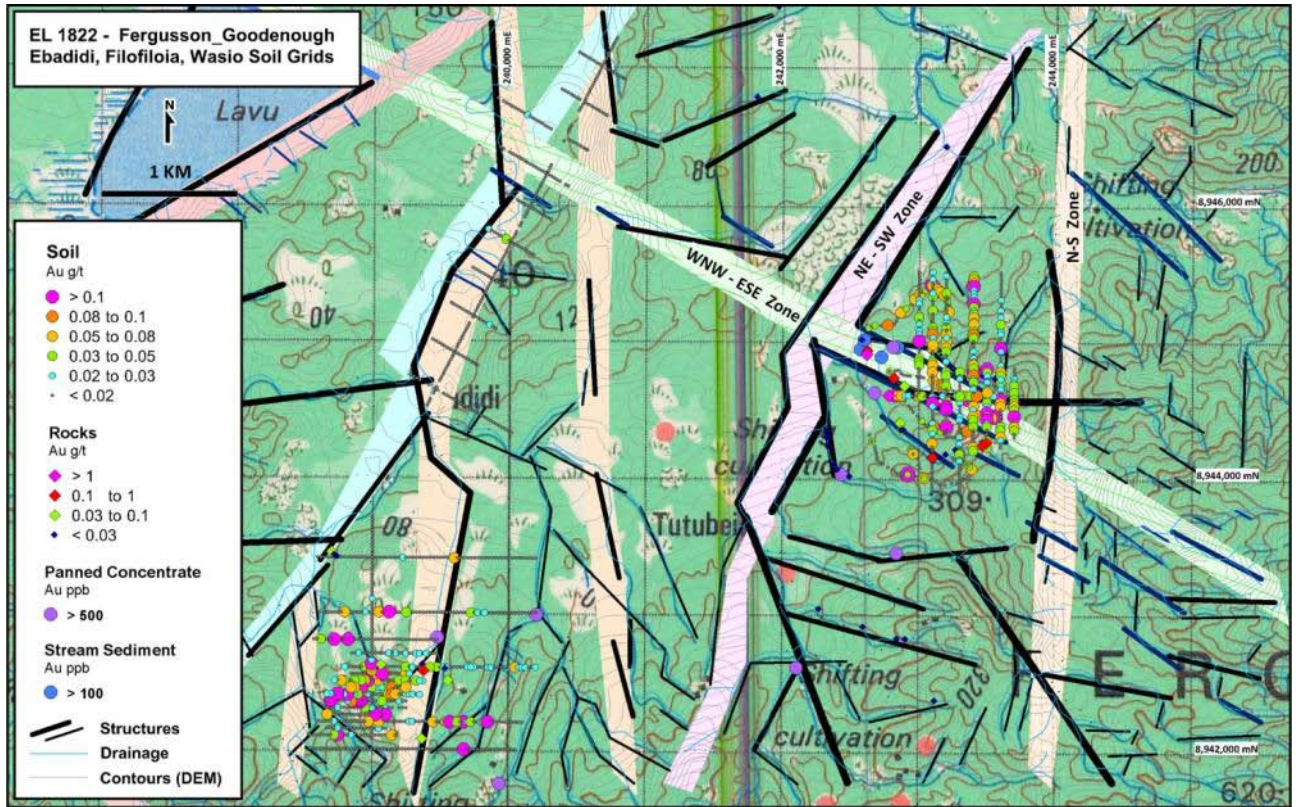


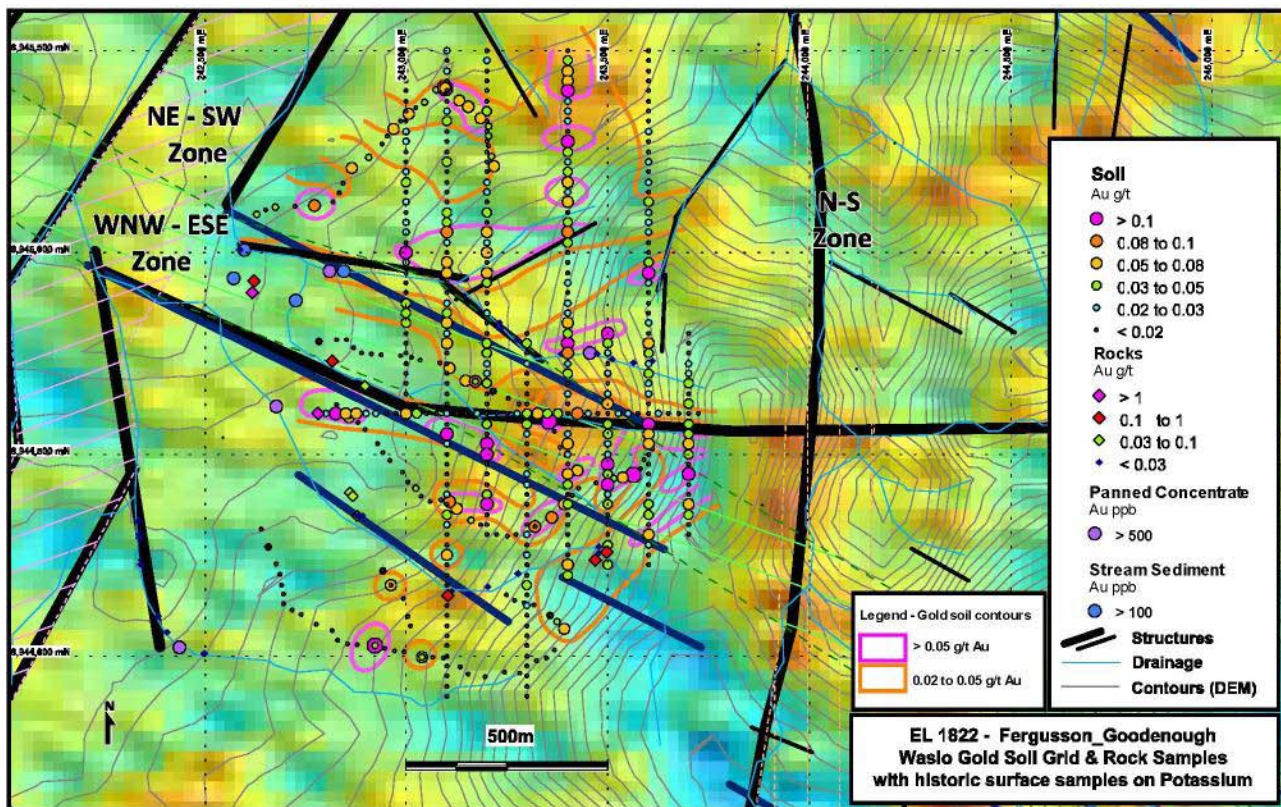
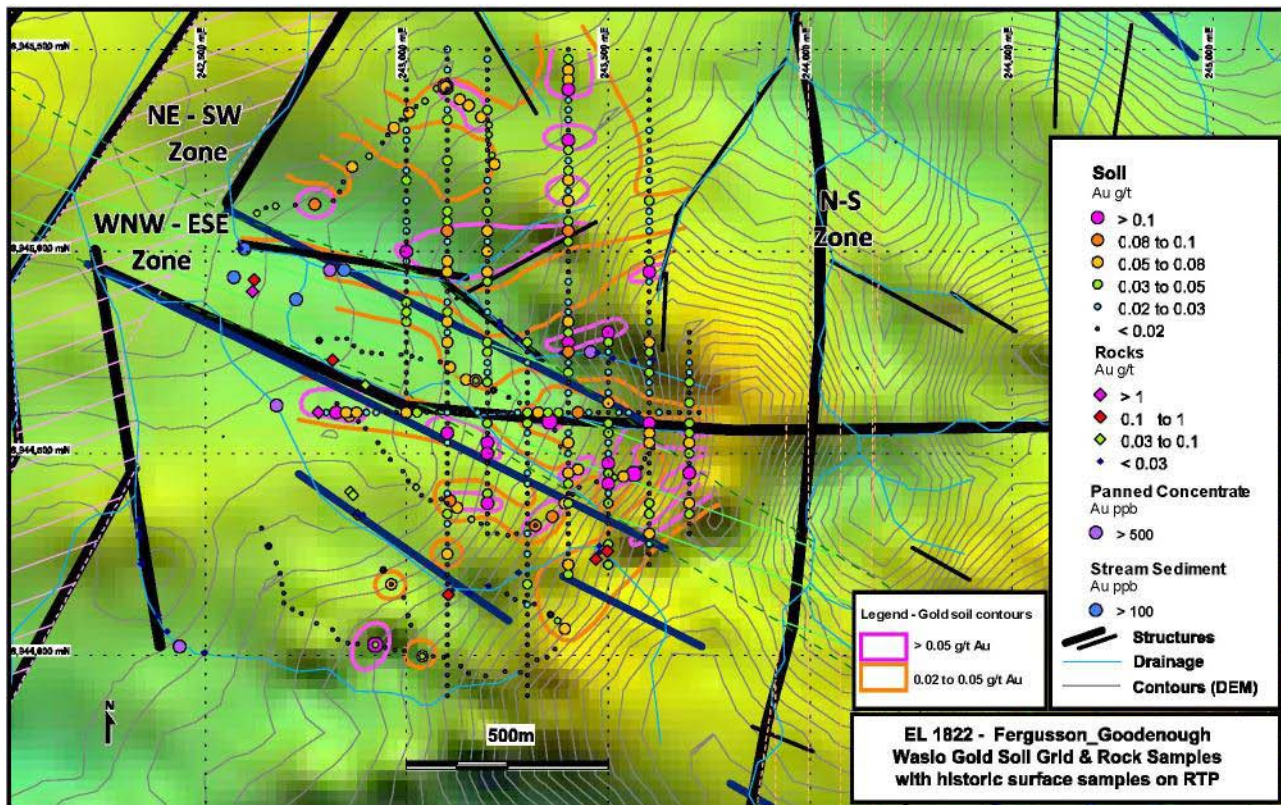
Drilling | Determination | Discovery

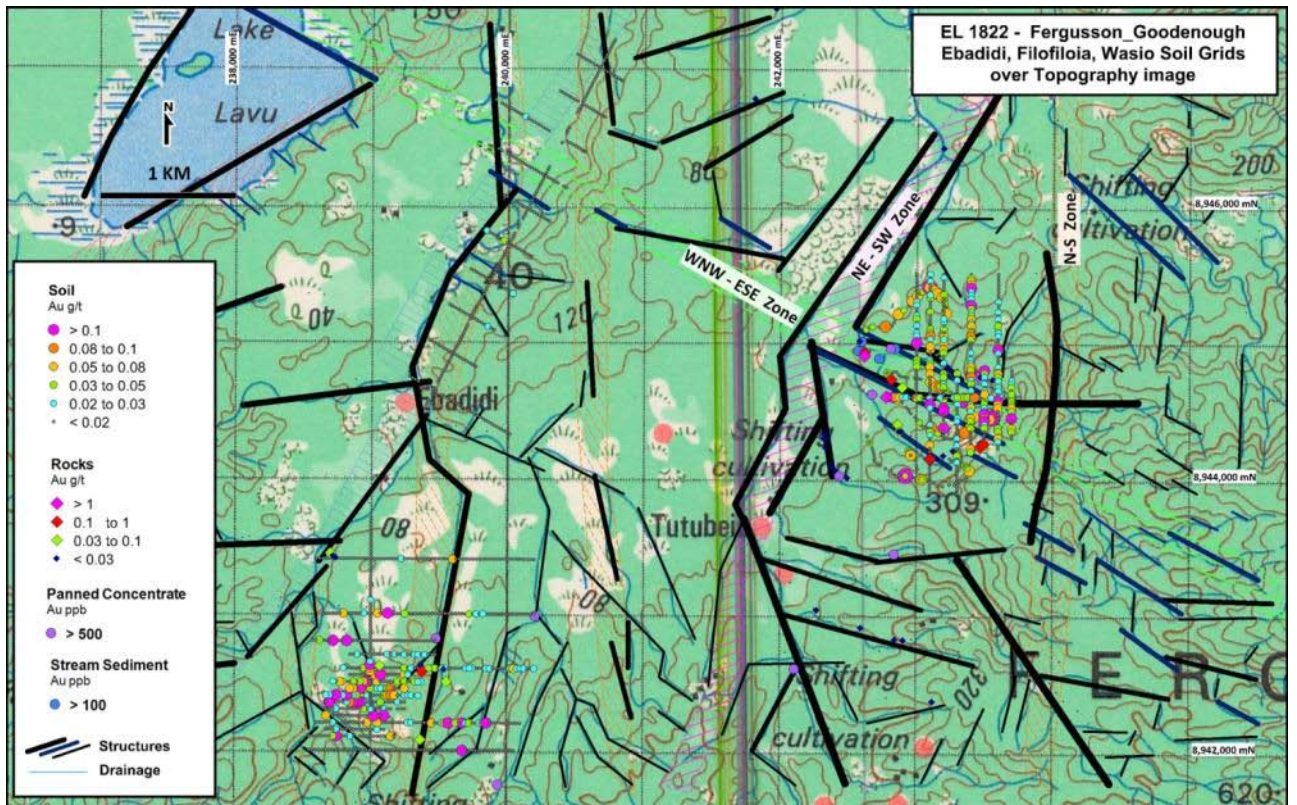
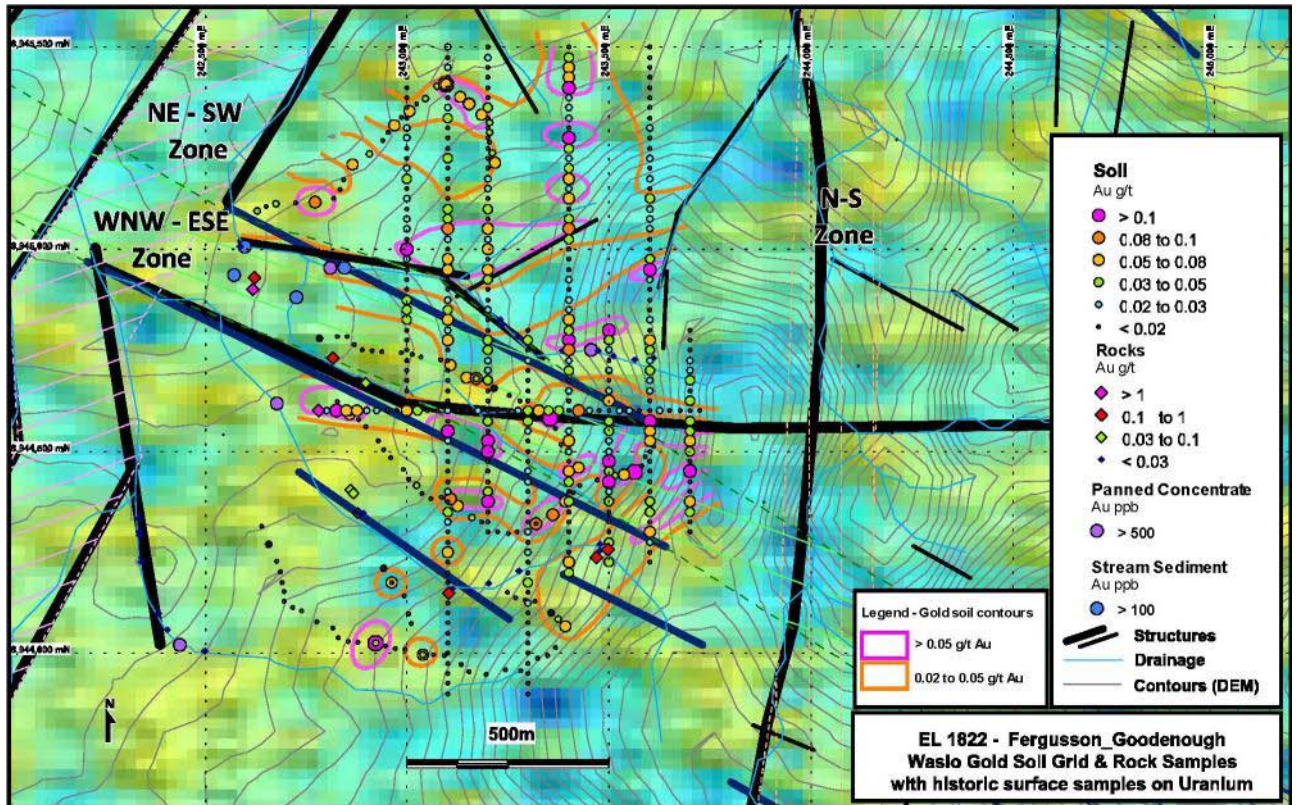
Three hundred and sixty eight (368) soil samples were collected on variable length, 200m spaced lines, designed to cover the region of anomalous historic ridge and spur assays. Two hundred and forty three (243) of the soil assays were above detection limit (0.005 g/t gold), with forty six (46) > 0.05 g/t gold including fifteen (15) ≥0.10 g/t gold and a peak of 0.69 g/t gold.

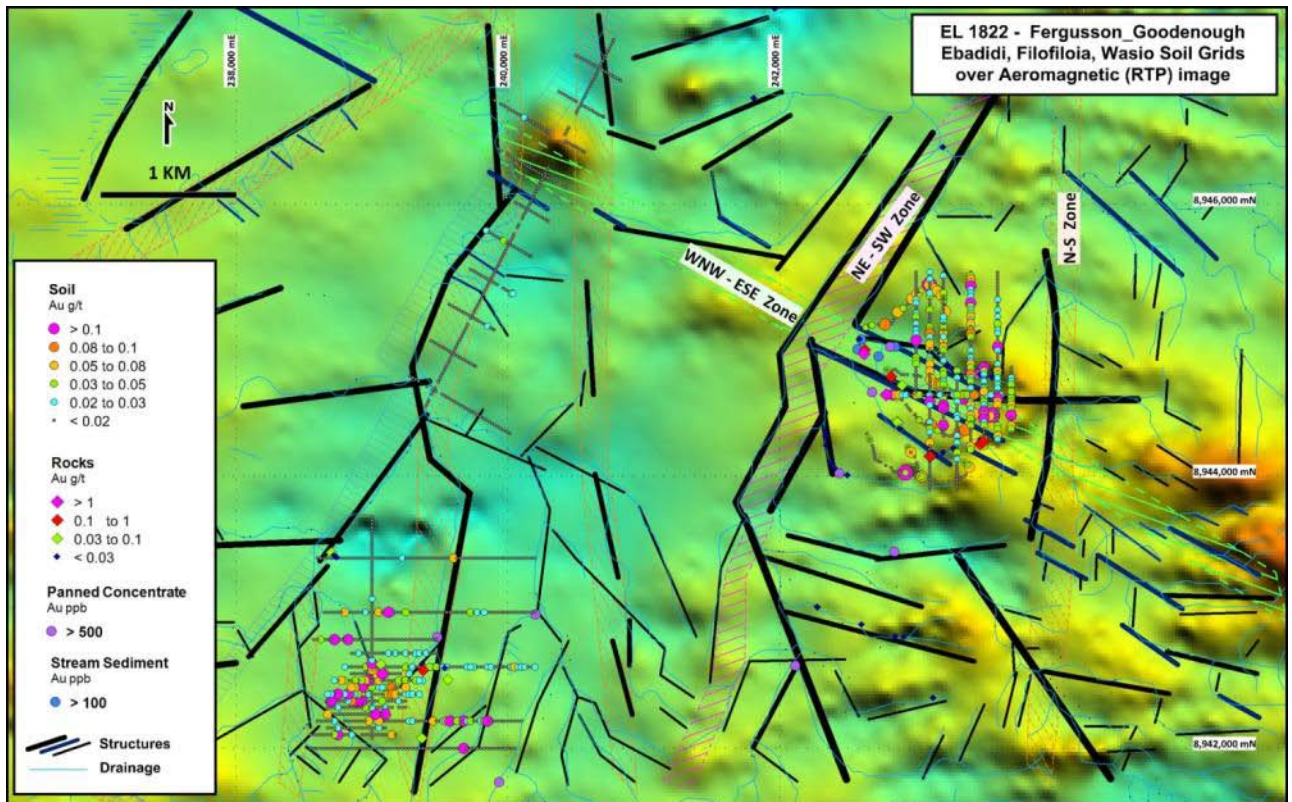
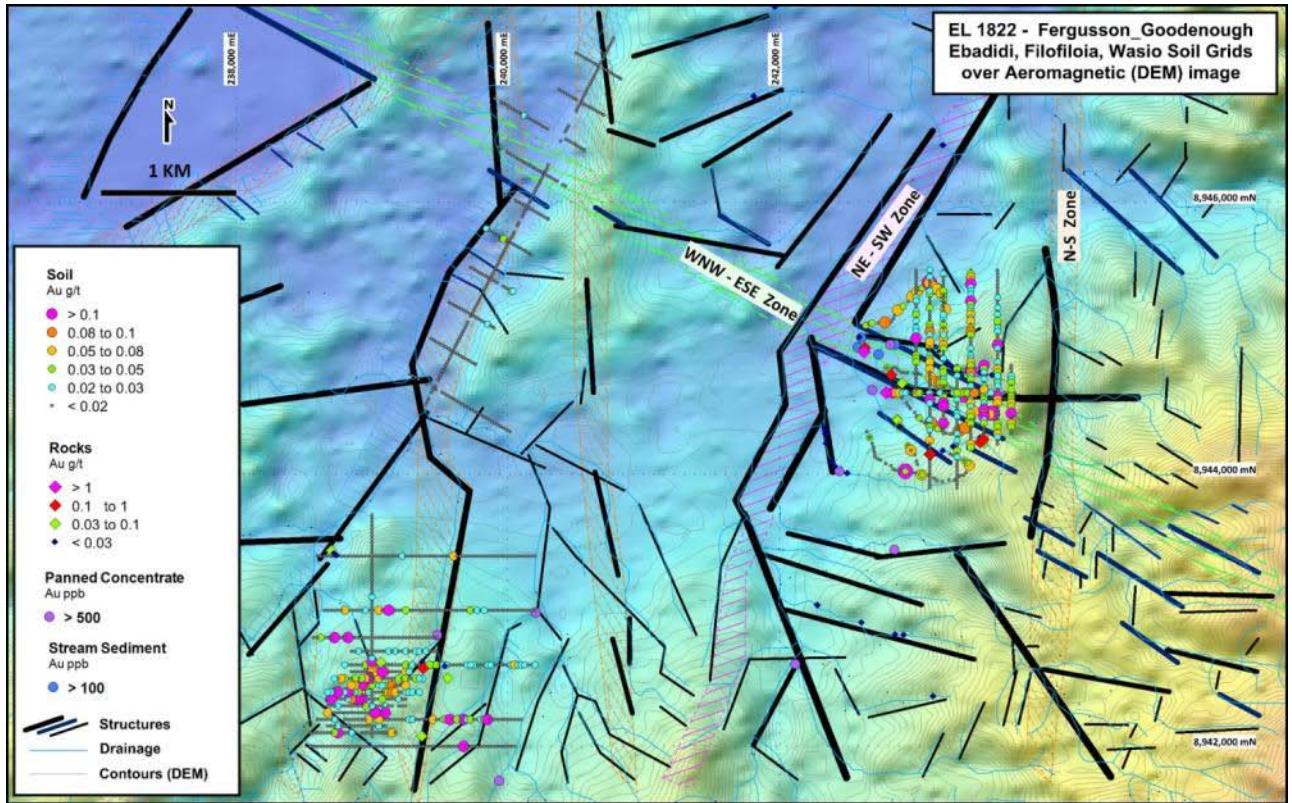


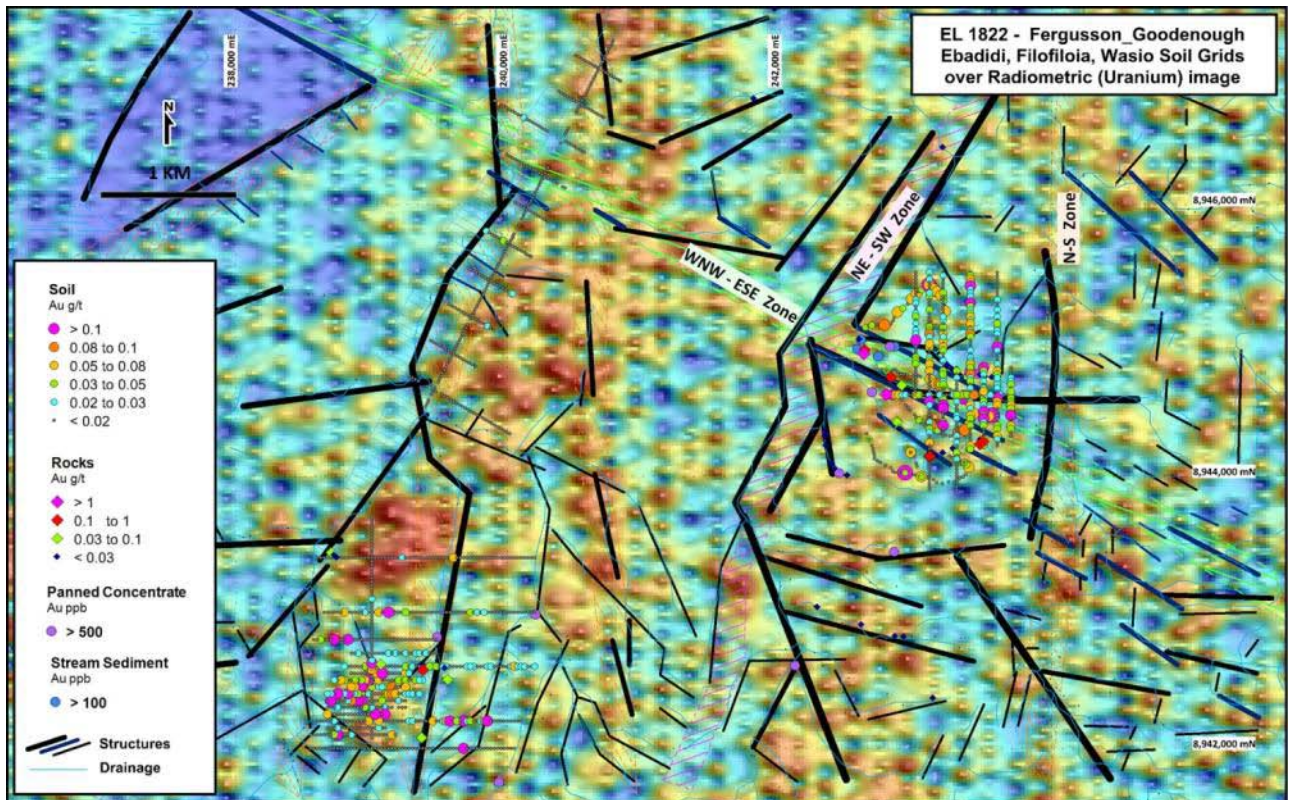
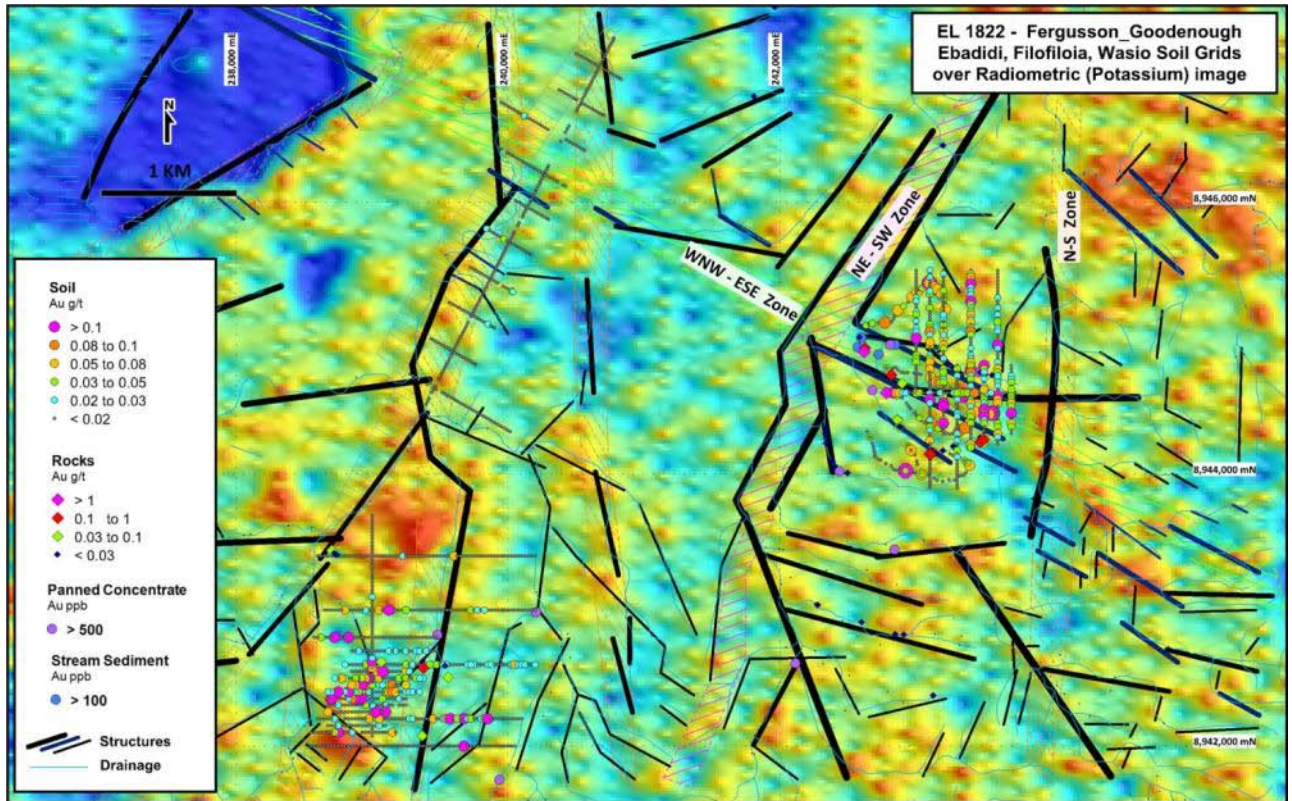
Seventeen rock float samples were also collected and results are also tabulated. All samples were analysed for gold only, but will be analysed for base + toxic elements to establish those trends in the future. Refer to the attached table for complete soil and rock assay results and the plans showing the soil results on various topographic and geophysical (aeromagnetic and radiometric) images.















EL 1822 Wasio Prospect Rock Chip Assay Results				
Sample Type	Gold (g/t)	Sample Number	Easting (m)	Northing (m)
Rock Float	0.16	702062	242623	8944929
Rock Float	2.94	702063	242617	8944901
Rock Float	0.06	702064	242897	8944670
Rock Float	0.12	702065	242817	8944730
Rock Float	16.5	702066	242781	8944600
Rock Outcrop Channel	0.09	702067	242859	8944404
Rock Outcrop Channel	0.08	702068	242866	8944396
Rock Cont. Channel	0.03	702069	242877	8944348
Rock Cont. Channel	0.01	702070	242877	8944348
Rock Outcrop Channel	0.01	702071	242891	8944347
Rock Float	1.56	702072	243102	8944149
Rock Float	0.27	702073	243102	8944149
Rock Float	0.02	702074	243202	8944172
Rock Outcrop Channel	0.45	702075	243469	8944237
Rock Outcrop Channel	0.55	702076	243469	8944237
Rock Outcrop Channel	0.96	702077	243497	8944256

Detailed field traverses are planned for the future to trace to the source of the soil anomalism and the epithermal related /altered float rocks.

The Wasio Prospect is located about 14 km inland in the central part of Fergusson Island. The prospect area can be accessed by foot from the north coast and the region can be supported cost effectively by boat.

For more information on the EL 1822 prospects, refer to the ASX Announcements dated 23/10/2013, 10/9/2013, 20/8/13, 21/8/2013, 23/4/2013 and 11/3/2013.

To register to receive ASX announcements via email please visit [www.quintessentialresources.com.au](http://www.quintessentialresources.com.au).

Paige McNeil GDipEd, ACIS, GAICD  
 Managing Director  
[info@quintessentialresources.com.au](mailto:info@quintessentialresources.com.au)

The information in this report that relates to Exploration Results and Mineral Resources is based on information compiled by, or compiled under the supervision of Mr P.A.McNeil - Member of the Australian. Inst. of Geoscientists. Mr P.A.McNeil is Consultant Geologist to Quintessential Resources Ltd. Mr P.A.McNeil has sufficient experience which is relevant to the type of mineralisation and type of deposit under consideration to qualify as Competent Person as defined in the 2004 Edition of the Australasian Code of Reporting Exploration Results, Mineral Resources and Ore Resources. Mr P.A.McNeil consents to the inclusion in the report of the matters based on the information in the form and context in which it appears.