

ASX ANNOUNCEMENT

25 March 2014

## Focus Recommences Exploration at Laverton & Coolgardie

*Key points:*

- *Drilling recommences at Laverton and Coolgardie*
- *RC and diamond drilling on a number of prospects at each site*
- *8,600m to be drilled at Laverton; 9,000m at Coolgardie*

Focus Minerals Ltd. (ASX: FML) is pleased to announce that it has recommenced drilling at Laverton and Coolgardie. These programs, which are a continuation of the exploration strategy announced last year, are expected to take approximately two months to complete.

“Following a period of consolidation and cost reduction, we are now recommencing a staged exploration program, building on the strategic priorities established last year” said Focus Minerals Interim CEO, Wanghong Yang.

This next stage of exploration includes RC and diamond drilling on five targets at Laverton, and RC and diamond drilling on three targets at Coolgardie. The Coolgardie drilling will commence with additional drilling at Brilliant, carrying on from last year’s program.

The priority targets of the Company’s exploration are depicted in the figures below.

**Focus Minerals Limited** - Focus owns two large gold projects in Western Australia’s Eastern Goldfields. The company is the largest landholder in the Coolgardie Gold Belt, where it owns the 1.2Mtpa processing plant at Three Mile Hill. 250km to the northeast Focus has the Laverton Gold Project which comprises a significant portfolio of highly prospective tenure, adjacent to Gold Fields’ Granny Smith operation where it has historically processed ore. Focus also owns the 1.45Mtpa Barnicoat mill in Laverton which has been on care and maintenance since 2009.

**For further information please contact:**

**Dane Etheridge**  
Company Secretary and GM Business Development  
Focus Minerals Ltd  
Phone: +61 8 9215 7888

**Andrew Paterson**  
GM Exploration & Resource Development  
Focus Minerals Ltd  
Phone: +61 8 9215 7888

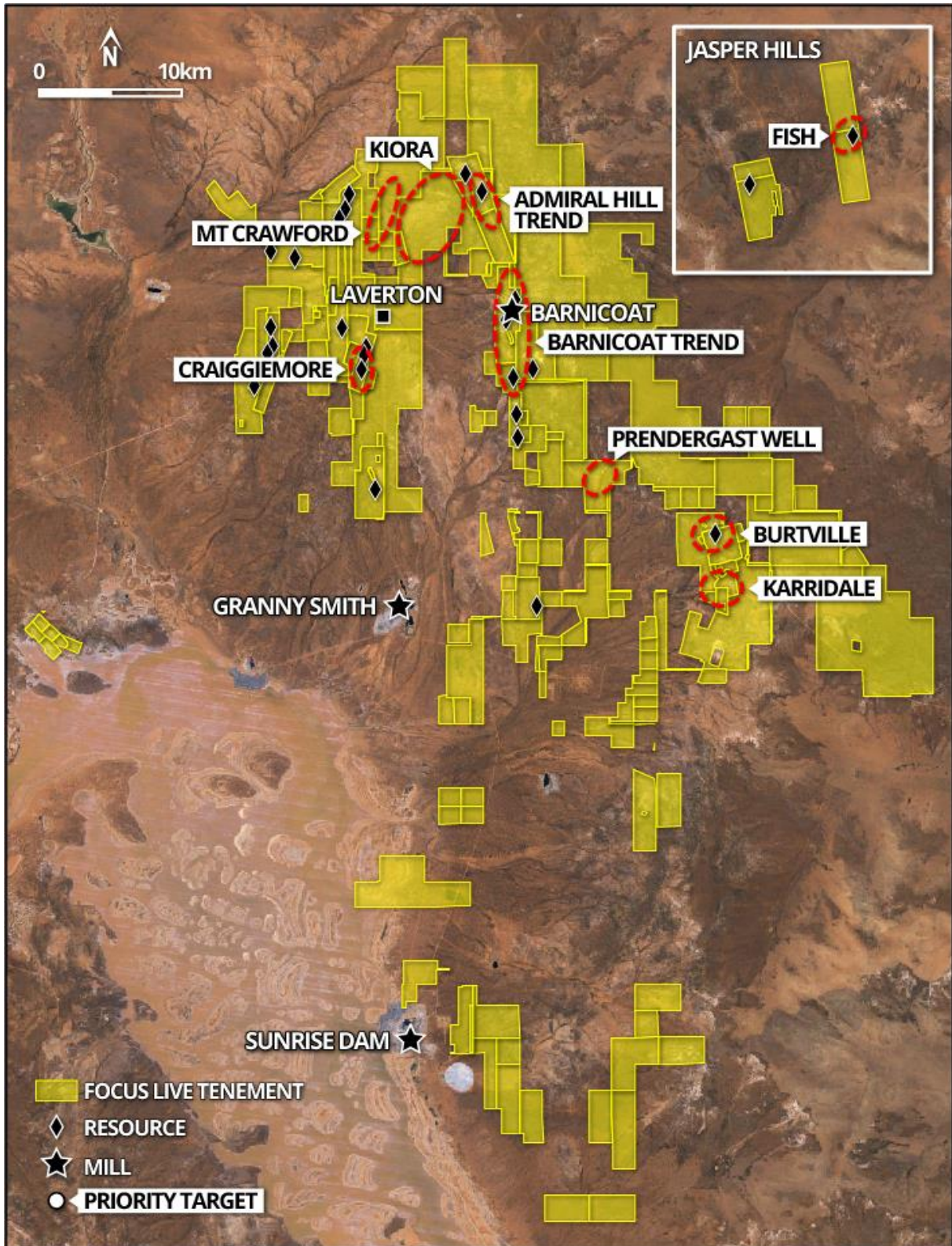


Figure 1: Laverton Project tenements & priority target areas.

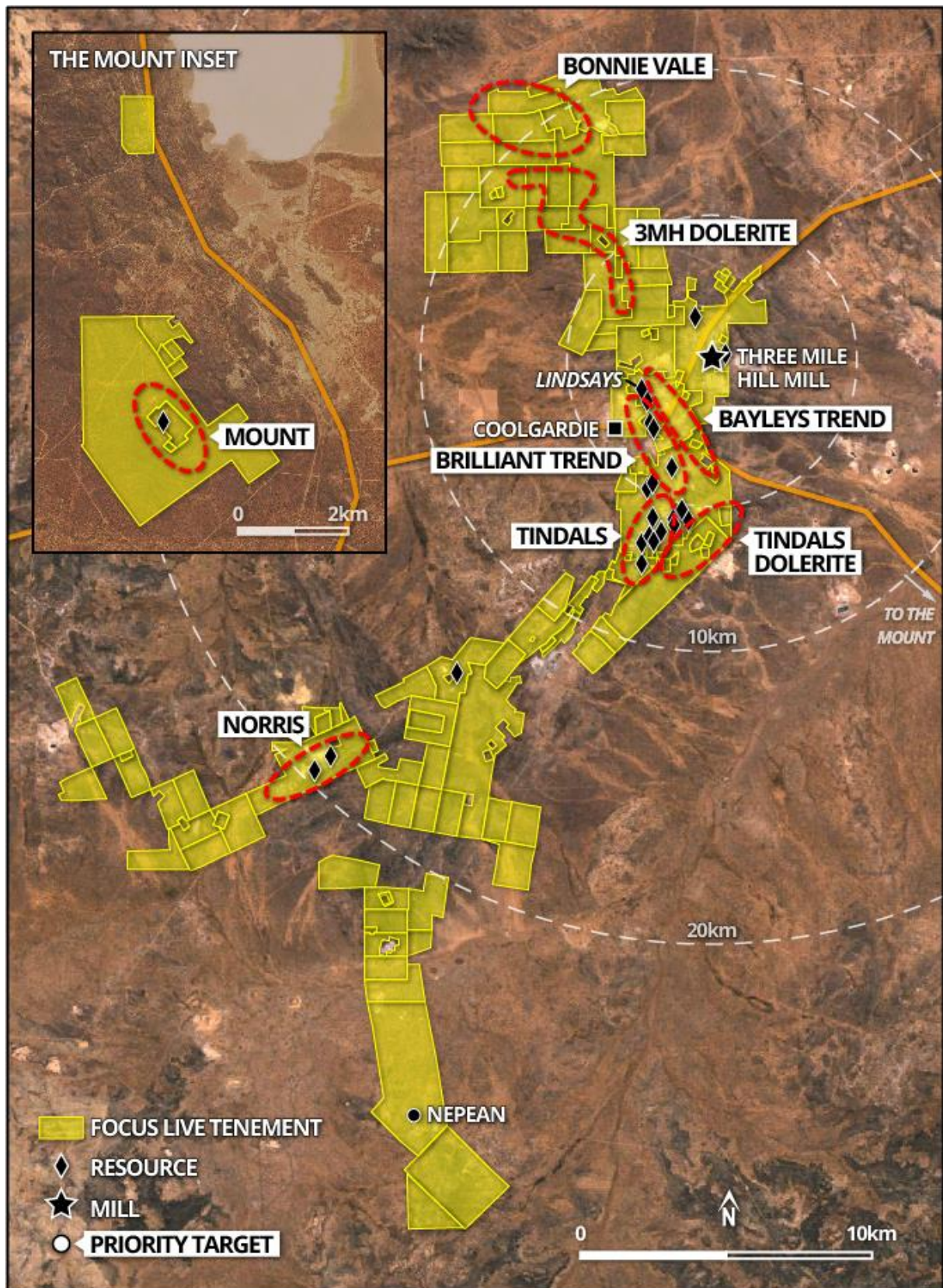


Figure 2: Coolgardie Project tenements & priority target areas.