

**GB Energy Limited** is a focused uranium explorer with exploration licences in South Australia.

**Directors**

Chairman  
Mr Russell Barnett  
Executive Director  
Mr Graeme Kirke  
Directors  
Mr Gordon Hart  
Mr Stuart Rechner

**Operations**

Chief Operating Officer  
Ms Anna MacKintosh  
Consulting Geologist  
Mr Nick Burn  
Geophysicist  
Ms Antoinette Stryk

**Issued Capital**

Ordinary Shares  
405,498,587  
Unlisted Options  
1,000,000

**Share Price at 6 June 2014**

\$0.003

**Securities Exchange Listing**

Australian Securities Exchange  
Code: GBX

**Further Contact:**

Graeme Kirke  
Executive Director  
GB Energy Ltd  
Tel: 08 6555 0320  
Fax: 08 9325 1238  
[www.gbenergy.com.au](http://www.gbenergy.com.au)

## ASX Announcement 10 June 2014

### Geophysical surveys commence on Stuart Shelf project

GB Energy (ASX: GBX) is pleased to advise that geophysical field surveys have commenced on our Stuart Shelf Iron Oxide Copper-Gold-Uranium (IOCGU) project in South Australia.

The Stuart Shelf project consists of 1877km<sup>2</sup> of under-explored ground in the world class Olympic Copper-Gold Province. The only previous drilling on the tenements (EL 5231 and EL 5255) was conducted in the 1970's and failed to reach basement and test geophysical targets.

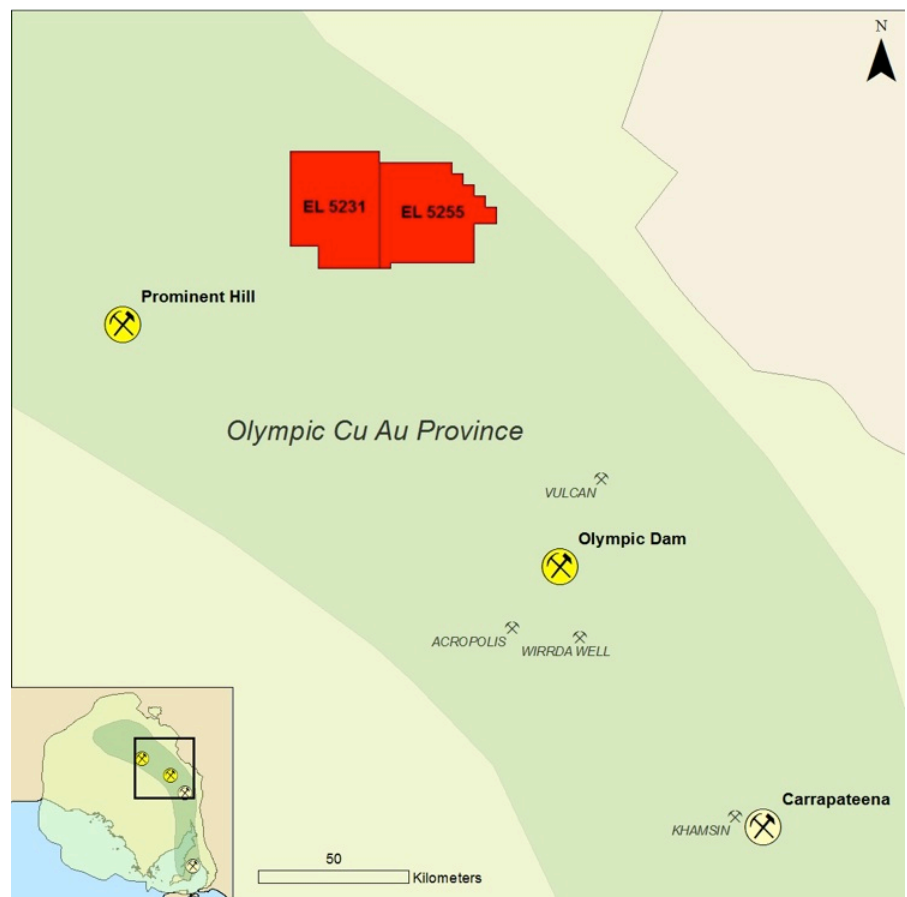


Figure 1: GB Energy's Stuart Shelf Copper-Gold-Uranium project

GB Energy recently collected high-resolution heli-borne magnetics over two existing seismic lines that cross our Stuart Shelf tenements.



**Figure 2: Daishsat Robinson R44 which recently completed GBX's Helimag survey**

A ground gravity surveying team deployed to the field earlier this week and are currently collecting more than 1500 gravity measurements over the project area. The survey is expected to take around two weeks to complete.

GB Energy geologist Stuart Rechner and geophysicist Antoinette Stryk will join the survey crew to supervise data collection and investigate / map surface features of interest.

Upon completion of the gravity survey, GB Energy's geophysicists will compile and interpret the magnetic, gravity and seismic data to pinpoint our highest priority drilling target.





**Figure 3: Daishat surveyor taking a gravity reading**

GB Energy Executive Director Graeme Kirke said today: “The collection of detailed magnetic and gravity data will provide us with extremely useful information concerning the properties of the rocks that lie underneath the sedimentary cover. We will use this information to generate drill targets.”

A detailed description of the Stuart Shelf project is available in GB Energy’s Shareholder Update of 7 April 2014