



QUARTERLY ACTIVITIES STATEMENT

For the quarter ending 31 December 2014

HIGHLIGHTS

- **Bulloo Downs Copper Project exploration**
 - **2,708 metres of RC drilling completed**
 - **Copper intersections include 3m at 2.82%, 3m at 1.33% and 2m at 1.24%**
 - **3,000km² HyMap survey at Bulloo Project under interpretation**
 - **Thermal Imaging giving further copper anomalies**
- **Glandore**
 - **Aircore assays show grade and extensions under the lake**
 - **Clinker Hill ready to RC drill**

Aruma Resources Limited (ASX: AAJ), an active Western Australian gold and copper explorer, has increased its exciting **Bulloo Downs Copper Project** (in WA's Ashburton region) in area to some 2,900km². This area has now been flown with HyMap mineral mapping covering a total of 3,000km² with some 10 prospects identified. A new thermal imaging method has also been tested and identified several targets which have also produced anomalous copper results.

Bulloo Downs is considered a premier project with the potential to be a new copper district and contains many mapped deep-seated, structurally controlled potential hydrothermal copper mineralised outcrops. The area is also considered highly prospective for gold, silver, lead and zinc.

A 2,708m RC drilling program at Bulloo Downs was concluded in early December and the final assay results have now been received. These assays were received in early January and published on the 14th of January, and are included in the quarterly in place of the portable XRF results. These portable XRF results were released on the 16th December and are detailed below in Table 1.

Highlights of the program included 3m at 1.3% copper from 79m; 3m at 2.8% copper including 2m at 4.1% and 1m at 8% from 20m; and 2m at 1.7% copper from 79m.

The results in Table 1 confirm the grade and thickness of the copper mineralisation in three dimensions for the majority of the target zones in the original Madison-Lachlan-Chandra areas and the new Scotties area. The drilling in March 2014 at Madison West demonstrated that the copper mineralisation persisted at depth in BMRC13 (4m at 2.2% Cu from 51m) and now it is extended to the other prospects as well. In defining grade, thickness and extent, the drilling is just the first step in developing Bulloo Downs into another important copper centre in the Gascoyne-Pilbara Proterozoic belt.

Aruma Resources Limited

ABN 77 141 335 364 ASX: AAJ
Suite 33, 18 Stirling Highway, Nedlands WA 6009
Locked Bag 2000, Nedlands WA 6909, Australia
T+61 8 6389 1799 | F +61 8 6389 0112 | W www.arumaresources.com



QUARTERLY ACTIVITIES STATEMENT
FOR THE QUARTER ENDING 31 December 2014

	Prospect	Easting	Northing	RL	Depth	Az.	Dip	From	To	Note	int.	Cu%
BLRC03	Lachlan	752575	7345113	562	96	165	-60	75	85		10	0.50
BLRC03	Lachlan	752575	7345113	562	96	165	-60	79	84	incl.	5	0.87
BLRC03	Lachlan	752575	7345113	562	96	165	-60	79	82	incl.	3	1.33
BLRC03	Lachlan	752575	7345113	562	96	165	-60	79	81	incl.	2	1.77
BLRC04	Lachlan	752535	7345086	566	102	150	-60	75	80		5	0.58
BLRC04	Lachlan	752535	7345086	566	102	150	-60	76	80	incl.	4	0.70
BMRC20	Madison E	751914	7348941	550	60	340	-60	17	20		3	0.57
BMRC21	Madison W	750635	7348785	554	60	170	-60	20	23		3	2.82
BMRC21	Madison W	750635	7348785	554	60	170	-60	20	22	incl.	2	4.18
BMRC21	Madison W	750635	7348785	554	60	170	-60	21	22	incl.	1	8.05
BMRC22	Madison W	750618	7348784	556	60	180	-60	23	27		4	0.67
BMRC22	Madison W	750618	7348784	556	60	180	-60	24	27	incl.	3	0.87
BMRC22	Madison W	750618	7348784	556	60	180	-60	24	26	incl.	2	1.24
BMRC23	Madison W	750666	7348798	554	66	185	-60	29	31		2	0.75
BSRC01	Scotties	770716	7338349	603	100	170	-60	40	42		2	0.66
BSRC01	Scotties	770716	7338349	603	100	170	-60	40	41	incl.	1	1.02
BSRC03	Scotties	770766	7338358	599	60	180	-60	42	45		3	0.59
BSRC03	Scotties	770766	7338358	599	60	180	-60	43	45	incl.	2	0.86
BSRC03	Scotties	770766	7338358	599	60	180	-60	43	44	incl.	1	1.59

**Table 1 RC drilling intersections >0.5% Cu at the Bulloo Downs Copper Project.
Grades >1% Cu are in bold.**

Note: All intersections are down hole, no estimate of true thickness made as all holes were drilled across dip. All co-ordinates are GDA94 and azimuths are magnetic, with measurements in metres.

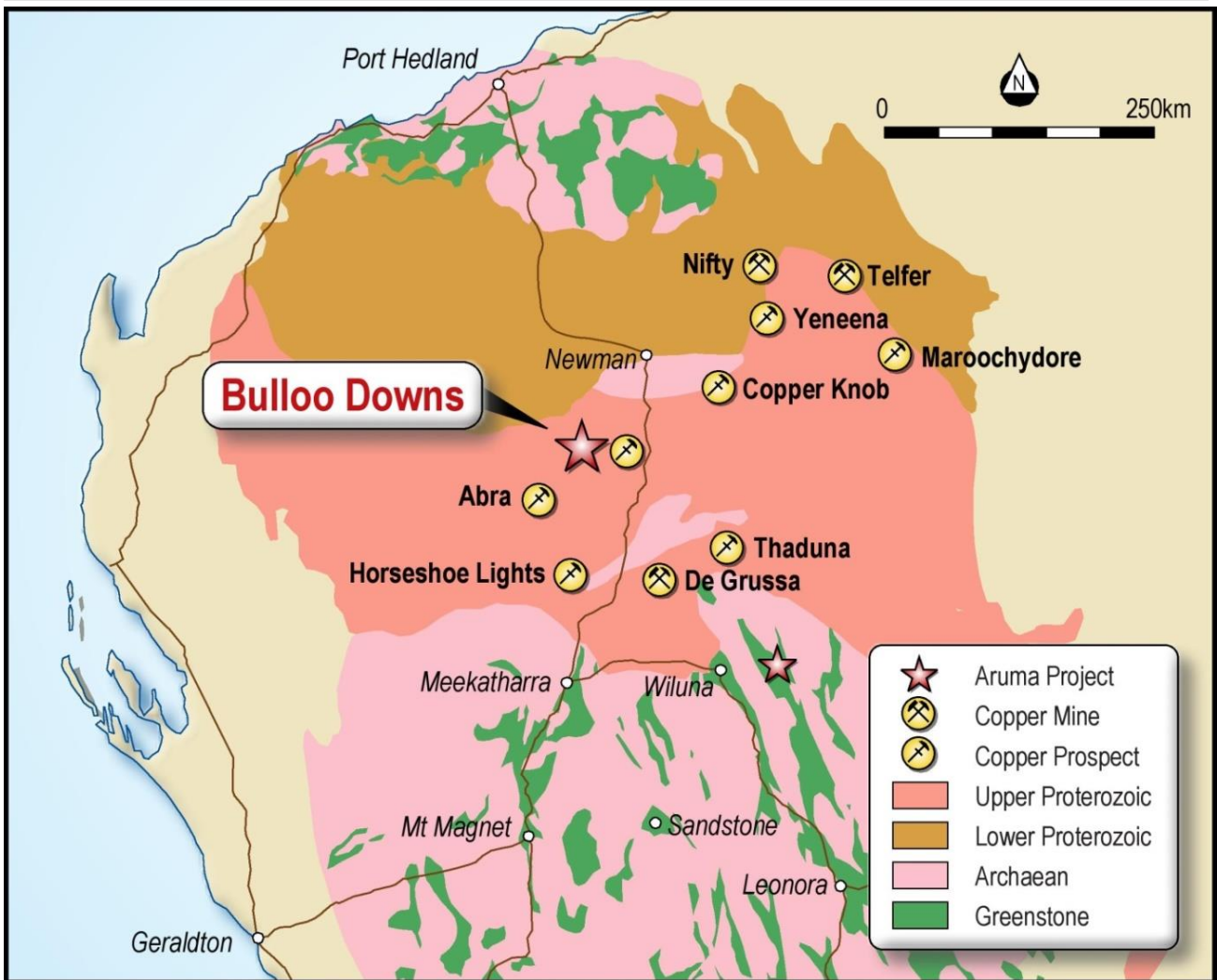


Figure 1 Bulloo Downs location in the Gascoyne-Pilbara Proterozoic belt with major copper occurrences

Figure 1 above shows the current and potential copper mines in the Proterozoic belt of the Gascoyne-Pilbara. This area not only hosts world class copper mines and prospects with some 5Mt of contained copper in published resources, but also world class iron, manganese, gold and uranium deposits. All these large deposits are in similar age host rock, are on major structures and are hydrothermal style deposits.

Aruma Resources Limited

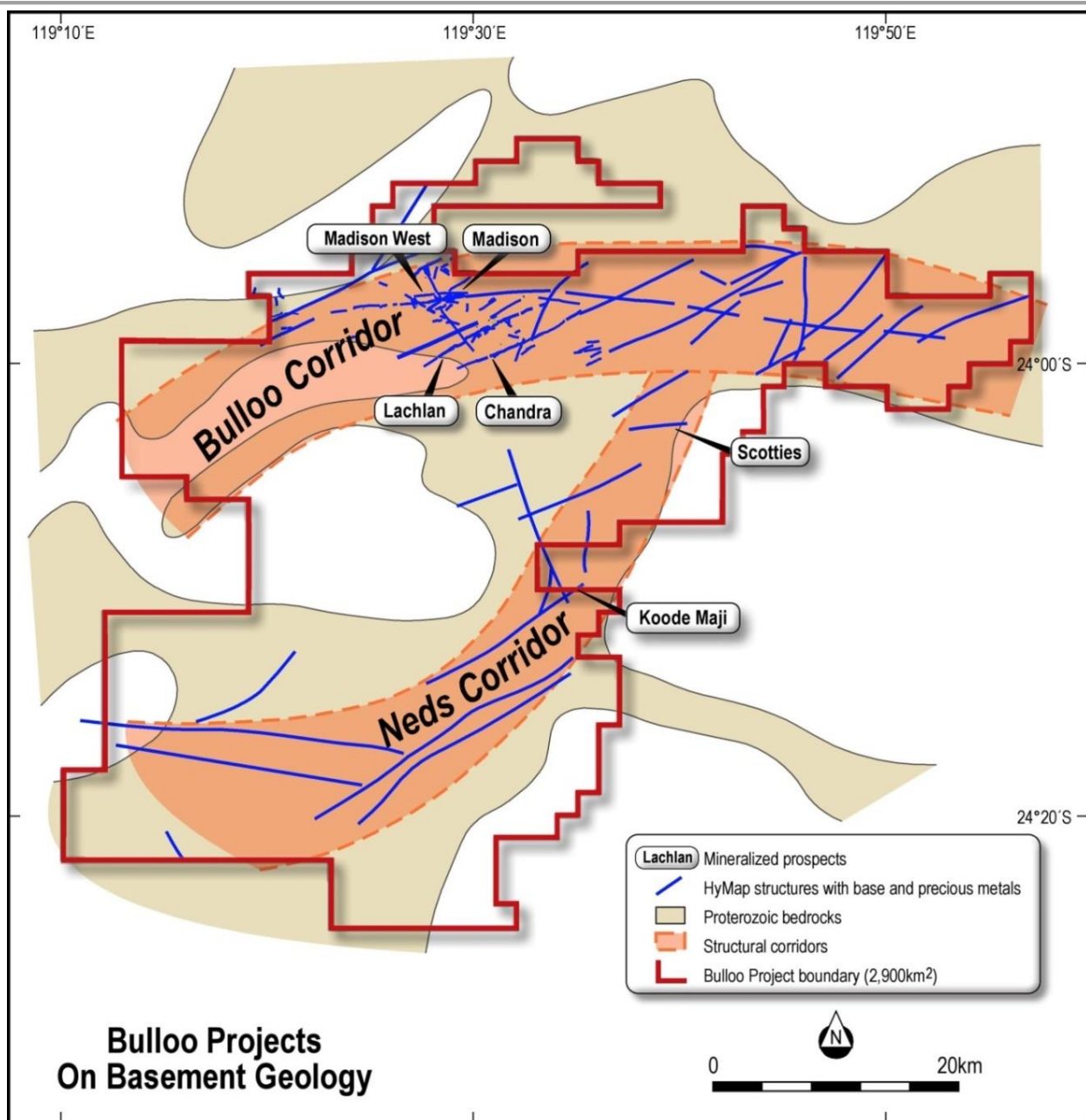


Figure 2 Bulloo Copper Project showing the six locations of assayed drill intersections. Only a small percentage of the 50km-plus corridors has been tested.

The Bulloo Downs lease area is of a major scale, with some 2,900km² (50km north-south by 60km east-west) of ground under option or pegged directly (Figure 2). The locations that have been drilled were chosen only after extensive analysis to determine the most prospective targets in the available leases where title and heritage clearance allowed. The potential of the belt is now apparent and the sampling and mapping of all the new trends will continue in the coming year. This exciting result confirms the scope, mineralisation style and grade in the two corridors shown above in Figure 2. Aruma drilled eight defined Tier 1 targets and encountered copper mineralisation (>0.1% Cu) in six as detailed in Table 2.

Aruma Resources Limited



QUARTERLY ACTIVITIES STATEMENT
FOR THE QUARTER ENDING 31 December 2014

Hole	Location	Easting	Northing	RL	Depth	Az.	Dip	From	To	Note	int.	Cu%
BCRC01	Chandra	754948	7344064	567	90	160	-60	71	79		8	0.17
BLRC02	Lachlan	752605	7345136	567	114	180	-60	86	88		2	0.15
BLRC03	Lachlan	752575	7345113	562	96	165	-60	75	85		10	0.50
BLRC03	Lachlan	752575	7345113	562	96	165	-60	79	84	incl.	5	0.87
BLRC03	Lachlan	752575	7345113	562	96	165	-60	79	82	incl.	3	1.33
BLRC04	Lachlan	752535	7345086	566	102	150	-60	64	80		16	0.25
BLRC04	Lachlan	752535	7345086	566	102	150	-60	64	72	incl.	8	0.12
BLRC04	Lachlan	752535	7345086	566	102	150	-60	75	80	incl.	5	0.58
BLRC04	Lachlan	752535	7345086	566	102	150	-60	76	80	incl.	4	0.70
BMRC14	Madison E	751870	7348955	560	60	145	-60	31	35		4	0.22
BMRC16	Madison E	751886	7348974	561	90	150	-60	49	53		4	0.28
BMRC16	Madison E	751886	7348974	561	90	150	-60	49	52	incl.	3	0.34
BMRC20	Madison E	751914	7348941	550	60	340	-60	15	28		13	0.29
BMRC20	Madison E	751914	7348941	550	60	340	-60	17	20	incl.	3	0.57
BMRC21	Madison W	750635	7348785	554	60	170	-60	20	23		3	2.82
BMRC21	Madison W	750635	7348785	554	60	170	-60	20	22	incl.	2	4.18
BMRC21	Madison W	750635	7348785	554	60	170	-60	21	22	incl.	1	8.05
BMRC22	Madison W	750618	7348784	556	60	180	-60	21	37		16	0.21
BMRC22	Madison W	750618	7348784	556	60	180	-60	23	27	incl.	4	0.67
BMRC22	Madison W	750618	7348784	556	60	180	-60	24	27	incl.	3	0.87
BMRC22	Madison W	750618	7348784	556	60	180	-60	24	26	incl.	2	1.24
BMRC23	Madison W	750666	7348798	554	66	185	-60	29	31		2	0.75
BMRC25	Madison W	750592	7348796	552	78	180	-60	41	46		5	0.29
BSRC01	Scotties	770716	7338349	603	100	170	-60	40	43		3	0.45
BSRC01	Scotties	770716	7338349	603	100	170	-60	40	42	incl.	2	0.66
BSRC01	Scotties	770716	7338349	603	100	170	-60	40	41	incl.	1	1.02
BSRC02	Scotties	770741	7338351	603	100	170	-60	40	41		1	0.16
BSRC03	Scotties	770766	7338358	599	60	180	-60	42	45		3	0.59
BSRC03	Scotties	770766	7338358	599	60	180	-60	43	45	incl.	2	0.86
BSRC03	Scotties	770766	7338358	599	60	180	-60	43	44	incl.	1	1.59
KMRC01	Koode Magi	762322	7324813	616	100	310	-60	54	56		2	0.11
KMRC01	Koode Magi	762322	7324813	616	100	310	-60	73	76		3	0.11
KMRC02	Koode Magi	762331	7324855	616	60	310	-60	36	38		2	0.12
KMRC04	Koode Magi	762361	7324830	616	110	310	-60	93	102		9	0.21
KMRC04	Koode Magi	762361	7324830	616	110	310	-60	97	100	incl.	3	0.38

**Table 2 Full RC drilling details at the Bulloo Downs Copper Project
(>0.1% Cu cut-off for the intercept)**

Table 2 clearly demonstrates the grade and thickness of the mineralised structures at Bulloo Downs, with high grade oxide mineralisation of up to 8% Cu and thick mineralised intersections

Aruma Resources Limited



QUARTERLY ACTIVITIES STATEMENT
FOR THE QUARTER ENDING 31 December 2014

(two returned 0.2% Cu over 16m). This powerful hydrothermal system is likely to host sulphide mineralisation and the next drilling phase will be focused on identifying this type of material.

Aruma considers the Bulloo Downs area, which contains many mapped and sampled copper outcrops, to be prospective for copper discoveries with gold, silver, lead and zinc credits. Table 3 below contains the silver assays over 1ppm to demonstrate the potential for metal credits in the area.

Hole	Location	Easting	Northing	RL	Depth	Az.	Dip	From	To	Note	int.	Ag
BLRC03	Lachlan	752575	7345113	562	96	165	-60	81	82		1	1.7
BLRC04	Lachlan	752535	7345086	566	102	150	-60	77	78		1	1.8
BMRC14	Madison E	751870	7348955	560	60	135	-60	40	41		1	1.1
BMRC21	Madison W	750635	7348785	554	60	170	-60	14	16		2	1.25
BMRC23	Madison W	750666	7348798	554	66	185	-60	35	36		1	1.4
BMRC24	Madison W	750700	7348811	557	54	180	-60	34	35		1	1.1
KMRC01	Koode Magi	762322	7324813	616	100	310	-60	54	55		1	1
KMRC02	Koode Magi	762331	7324855	616	60	310	-60	36	39		3	2
KMRC02	Koode Magi	762331	7324855	616	60	310	-60	37	39	incl.	2	2.3
KMRC04	Koode Magi	762361	7324830	616	110	310	-60	97	98		3	1.4

Table 3 Silver (Ag) assays in ppm for the RC drilling at the Bulloo Downs Copper Project (≥1ppm Ag cut-off for the intercept)

The Company is now the major landholder in the area and has secured access to both the mineralised corridors that host structures. The previous hand-held XRF assays from the mapped structures have identified mineralisation with width and strike length potentially capable of hosting copper (with lead, zinc, silver and gold credits).

With a new HyMap program just completed over all the lease areas, Aruma has extended the strike extent of the mapped structures and used these to define and confirm further mineralisation targets in conjunction with thermal mapping testing, a new technique that is described in further detail below. Lease E52/2887, which includes the Hard to Find copper prospect has been granted recently and will also be appraised in the next program.

Thermal Mapping Testing

A new technique is being tested at Bulloo to identify potential copper anomalies using Aster Data. The technique is in a developmental stage and has located several new anomalies that were not previously identified.

The initial targets identified by Dr Mike Hussey from the HyMap data and the Aster anomalies were field inspected in December 2014. The results indicate that the model of Aster anomalies

Aruma Resources Limited



QUARTERLY ACTIVITIES STATEMENT
FOR THE QUARTER ENDING 31 December 2014

associated with fractures with HyMap anomalies of kaolinite-dickite, and hematite-goethite is confirmed with known structures at Madison, Lachlan, Chandra and Neds Gap.

Additional reconnaissance work in December targeted a small number of new targets outside the known anomalous areas. This work confirmed the original observations with two new anomalous zones identified at Madison, one at Neds Gap, and a continuation of mineralisation at Scotties some 1.2km to the west. The results are described in Table 4 below.

Additional field work is now planned to follow up the high priority target areas where fracture density and mineral mapping anomalism is associated with Aster anomalies.

Target	Type	Easting	Northing	Max Cu value hand-held XRF(ppm)	Comment
Area A-1 Madison area	Fracture kaolin and dickite	752100	7349070	766	Mapping extended the Madison structure from the Hussey interpretation
Area A-2 Madison area	Fracture kaolin and dickite	751696	7349420	4979	Mapping identified new anomaly on E-W structure in Madison box.
Area W	kaolin-dickite	755097	7348269	796	In Madison box, new anomalous structure identified
Area G	Fracture -Aster	763727	7348614	255	Result of 255 is on a dolerite dyke.
Area P	Fracture -Aster	760840	7329977	24	Several fractures still to be sampled.
Area I	Fracture -Aster	758361	7345172	6410	Chandra structure previously identified as anomalous
Area D	Fracture -Aster	760549	7317521	810	New target approx. 500 metres parallel to Neds Gap structure
Area U	Fracture-kaolinite	767315	7342256	292	NNE structure
Scotties West	Fracture -Aster	769450	7338270	1178	Continuation of Scotties 1.2km west of the Scotties Workings

Table 4 Aster anomaly sampling at the Bulloo Copper Project

Aruma Resources Limited



QUARTERLY ACTIVITIES STATEMENT
FOR THE QUARTER ENDING 31 December 2014

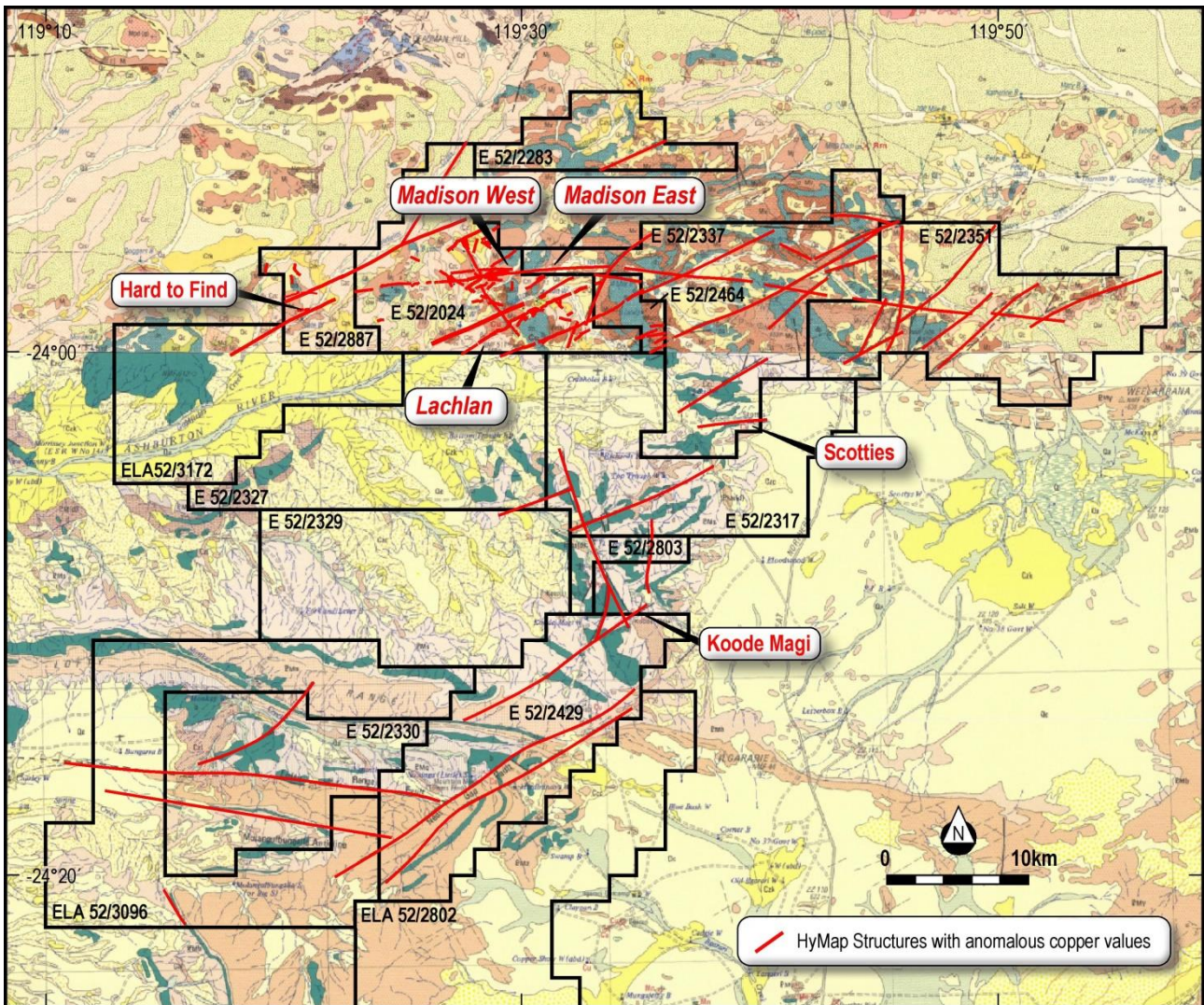


Figure 3 The Bulloo Downs leases with structures, drill prospects and geology (GSWA 250K)



QUARTERLY ACTIVITIES STATEMENT
FOR THE QUARTER ENDING 31 December 2014

Glandore

The air core programme was completed in September, 2014, with 57 holes for 2,519m which covered the HyMap and Fluid Flow targets on the lake.

Glandore is considered to be both highly prospective for gold as well as highly amenable for the development and exploitation of new deposits.

The air core drilling is the first drilling that has targeted structures on the lake away from the historic drilling at the Axial Planar and Supergene structures where results of up to 10m at 10.27g/t in GDJD336 and 8m at 10.4 g/t Au in EGRC 004 have been recorded by previous operators.

Hole ID	Zone	AMG94 East	AMG94 North	Azimuth Deg	Dip Deg	Depth m	From m	To m	Width m	Au ppm
AGAC030	Archer	391160	6595706	270	-70	48	25	26	1	0.29
AGAC061	Archer	390620	6596072	270	-70	33	28	29	1	0.33
AGAC012	Genge	390080	6597640	270	-70	35	12	15	3	0.28
AGAC012	Genge	390080	6597640	270	-70	35	20	23	3	0.42
AGAC012	Genge	390080	6597640			Incl.	20	21	1	0..93
AGAC055	Axial Planar	392131	6594494	225	-70	14	10	14	4	0.4
AGAC055	Axial Planar	392131	6594494			Incl.	12	13	1	0.96
AGAC056	Axial Planar	392160	6594520	225	-70	4	0	1	1	0.11
AGAC058	Axial Planar	392118	6594480	225	-70	11	8	11	3	0.13
AGAC044	Johnston E	393218	6596057	-90	0	53	49	51	2	0.16
AGAC045	Johnston E	393256	6596057	-90	0	50	43	44	1	0.23
AGAC049	Johnston E	393423	6596108	-90	0	44	16	17	1	0.22
AGAC038	Johnston	392420	6596061	-90	0	35	33	34	1	0.16
AGAC041	Johnston	392541	6596061	-90	0	53	35	38	3	0.12
AGAC042	Johnston	392584	6596060	-90	0	46	44	45	1	0.23
AGAC051	Johnston	393261	6595438	-90	0	39	37	38	1	0.1
AGAC052	Johnston	393341	6595441	-90	0	28	22	26	4	0.15
AGAC002	Steves	390360	6595800	270	-70	55	16	17	1	0.53
AGAC002	Steves	390360	6595800	270	-70	55	31	32	1	0.22
AGAC003	Steves	390400	6595800	270	-70	57	46	47	1	0.13
AGAC009	Steves	389880	6596600	270	-70	49	26	27	1	0.31

Table 5 Anomalous gold intersections in aircore drilling on Lake Yindarlgooda (all collars 317m RL)

The drilling has recorded a number of anomalous gold values (better than 0.1g/t Au) mostly in the supergene blanket at the base of weathering. The highest gold values were 0.96g/t in AGAC055,

Aruma Resources Limited



QUARTERLY ACTIVITIES STATEMENT
FOR THE QUARTER ENDING 31 December 2014

12-13 at the southern end Axial Planar, and 0.93g/t in AGAC012, 20-21m at Genge to the north. The anomalous results coincide with interpreted structures from the previously completed Fluid Flow modelling by the CSIRO as can be seen in Figure 4 below.

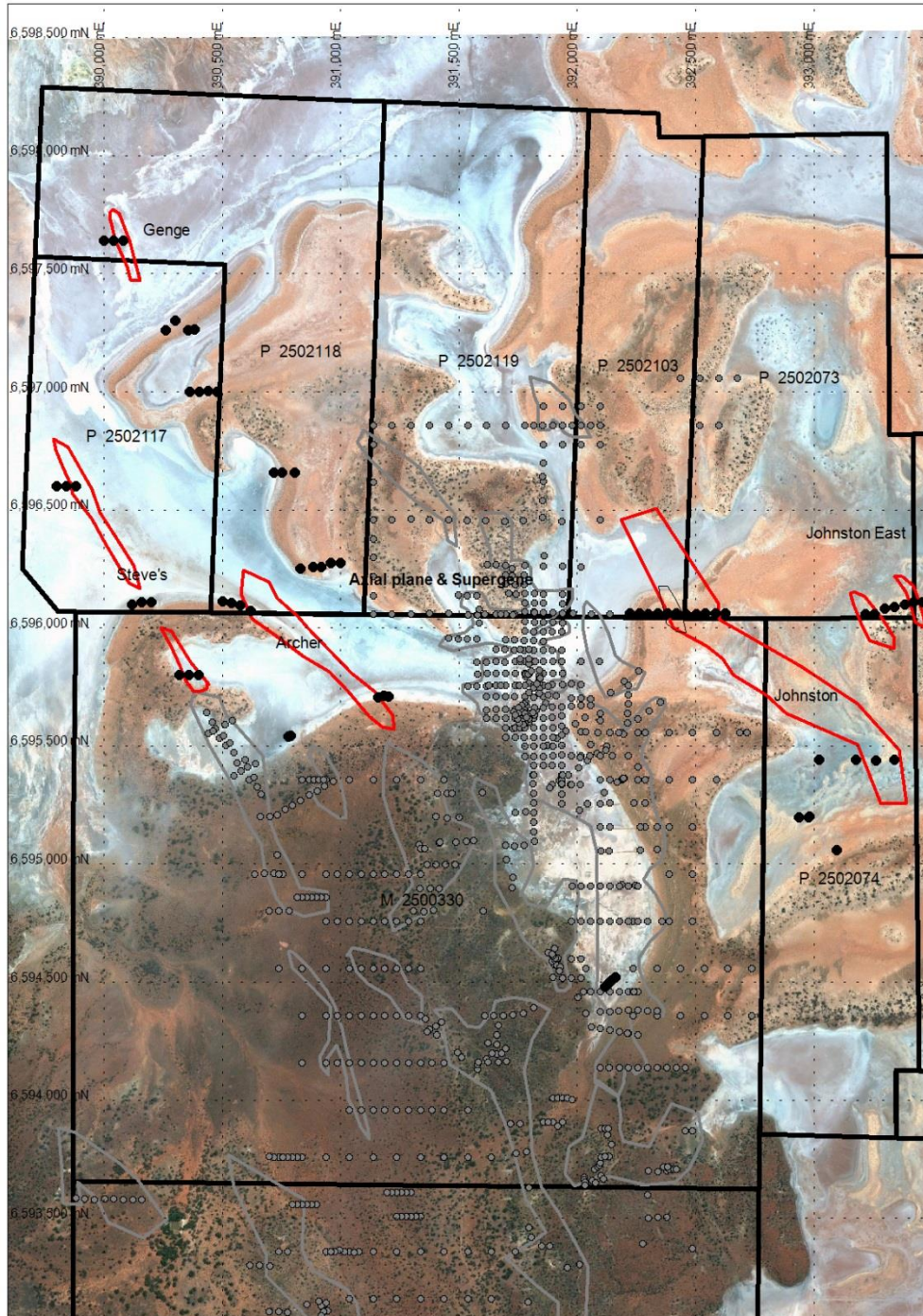


Figure 4 Google Earth image with air core holes completed (solid dots) with new >0.1g/t gold anomalies (in red)



ASX ANNOUNCEMENT
29 January 2015

**QUARTERLY ACTIVITIES STATEMENT
FOR THE QUARTER ENDING 31 December 2014**

Aruma is encouraged by the number of prospective zones identified in this stage of drilling with the wide drill spacing used. A total of 67 aircore holes were drilled for 2519 metres. The holes were drilled using a track mounted lake rig.

The previously identified Steves prospect (with historical results of up to 10 metres at 2.31 g/t Au) has been extended to the North West for some 1100 metres and remains open. Additional new targets have been identified as "Genge" in the most northern line drilled, "Archer" a prospect between the Axial Planar and Steves, and "Johnston" a zone on the eastern side of Axial Planar open both to the north and south.

The results are considered high tenor for aircore holes in salt lake material, and what is significant is the thickness of the mineralized envelopes as well as the number of holes (17 out of 67) with anomalous (>0.1g/t Au) intersections.

Aruma Resources Limited

ABN 77 141 335 364 ASX: AAJ
Suite 33, 18 Stirling Highway, Nedlands WA 6009
Locked Bag 2000, Nedlands WA 6909, Australia
T+61 8 6389 1799 | F +61 8 6389 0112 | W www.arumaresources.com



QUARTERLY ACTIVITIES STATEMENT
FOR THE QUARTER ENDING 31 December 2014

Clinker Hill

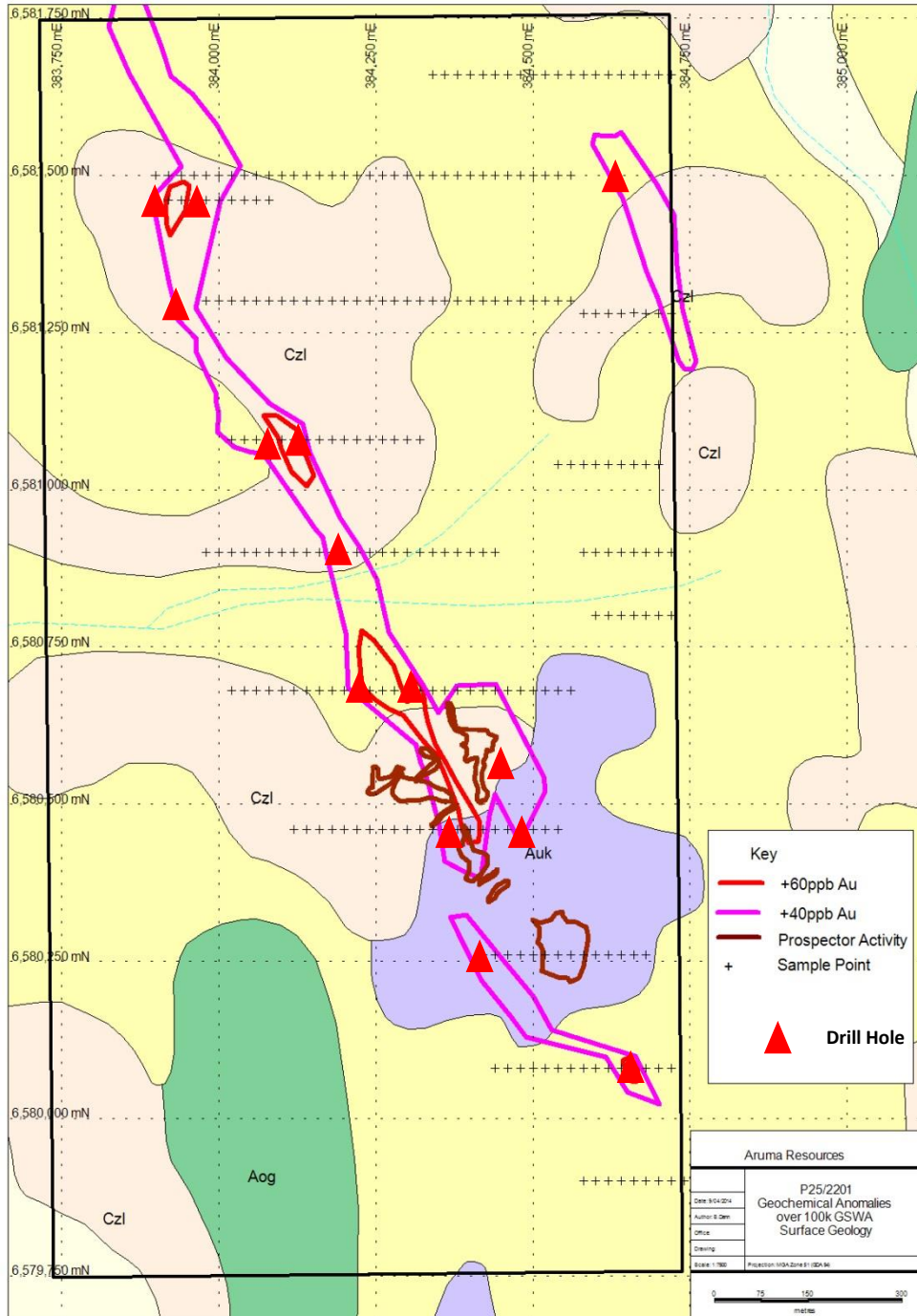


Figure 5 Proposed RC drilling on geochemistry and geology at Clinker Hill

The PoW has now been approved and the first phase of drilling is to commence within the coming months as the drilling at Bulloo Downs took up the exploration team for the December quarter.

Aruma Resources Limited

ABN 77 141 335 364 ASX: AAJ
Suite 33, 18 Stirling Highway, Nedlands WA 6009
Locked Bag 2000, Nedlands WA 6909, Australia
T+61 8 6389 1799 | F +61 8 6389 0112 | W www.arumaresources.com



QUARTERLY ACTIVITIES STATEMENT
FOR THE QUARTER ENDING 31 December 2014

The program will investigate the strong >50ppb gold in soil anomaly which coincides with several dry blowing areas. The anomaly is continuous over >1,600m of strike and between 150 to 250m wide. It is expected that 10 to 12 RC drill holes at 120 to 150m be drilled in February-March.

Jundee South

No work was completed in the quarter. An imaging program using the Aster data is being done this quarter.

Projects Summary

EASTERN GOLDFIELDS	Glandore Hub	<ul style="list-style-type: none"> ▪ Glandore Gold Project - 40km east of Kalgoorlie-Boulder ▪ 2,519m of air core drilling completed in previous quarter ▪ Assays received and reappraisal underway ▪ Further drilling to investigate anomalous zones
		<ul style="list-style-type: none"> ▪ Clinker Hill Gold Lease - 35 km east of Kalgoorlie-Boulder ▪ PoW approved ▪ Drilling to commence in coming quarter
	Regional Projects	<ul style="list-style-type: none"> ▪ Jundee South Gold Project - 20km south of Jundee Mine ▪ No work undertaken ▪ Thermal imaging underway using new method
		<ul style="list-style-type: none"> ▪ Bulloo Downs Copper Project – 10km south of Newman ▪ 2708m of RC drilling completed ▪ High grade copper mineralisation intersected at 5 targets ▪ Area upgraded to 2900km²

Table 6 Project Status and Activity Table

Aruma Resources Limited



Proposed Exploration Activities for Q3 FY2014-15

Aruma's lease holdings are constantly being appraised and are currently approximately 2,300km².

All of Aruma's projects have strong metal indicators and proven high grade potential. The ongoing work comprises:

- **Bulloo Downs Copper Project** – Data interpretation and consolidation to assist in planning next phase of RC drilling
- **Glandore** – Reappraisal of the project
- **Glandore Hub – Clinker Hill** – RC drilling to follow up soil sampling anomalies
- **Jundee South** - JV discussions

The Company continued the R&D refund presentation in the quarter, which is expected to net some \$600K. This together with cash of \$1M at 31 December 2014 makes Aruma funded for the coming exploration year. The company is seeking JV partners on some projects due to the scale and scope of work required.

Aruma will also be appraising leases that are becoming available in the Wiluna-Kalgoorlie terrain, especially where adjacent to current projects or with resources or intersections.

In addition to its current projects in Western Australia, Aruma continues to evaluate potential project opportunities.

For further information please contact:

Peter Schwann
Managing Director
Aruma Resources Limited
Ph: +61 8 6389 1799
Mobile: +61 417 946 370
info@arumaresources.com

Competent Person's Statement

The information in this release that relates to Exploration Results, Mineral Resources or Ore Reserves is based on information compiled by Peter Schwann who is a Fellow of the Australasian Institute of Mining and Metallurgy. Mr Schwann is a full time employee of the Company. Mr Schwann has sufficient relevant experience to qualify as a Competent Person as defined in the JORC Code (2012) and consents to the inclusion of this information in the form and context in which it appears. All exploration results reported have previously been released to ASX and are available to be viewed on the Company website www.arumaresources.com.au. The Company confirms it is not aware of any new information that materially affects the information included in the original announcement. The Company confirms that the form and context in which the Competent Person's findings are present have not been materially modified from the original announcements.

Aruma Resources Limited

ABN 77 141 335 364 ASX: AAJ
Suite 33, 18 Stirling Highway, Nedlands WA 6009
Locked Bag 2000, Nedlands WA 6909, Australia
T+61 8 6389 1799 | F +61 8 6389 0112 | W www.arumaresources.com



QUARTERLY ACTIVITIES STATEMENT
FOR THE QUARTER ENDING 31 December 2014

SUMMARY OF TENEMENTS

AUSTRALIA	Interest at beginning of Quarter	Interest at end of Quarter
Glandore (Gold)		
M25/327 M25/329 M25/330 P25/2089 P25/2090 P25/2091 P25/2092 P25/2093 P25/2094 P25/2103 P25/2117 P25/2118 P25/2119 P25/2153 P25/2154 P25/2199 P25/2202 P25/2203 P25/2204	100% Aruma Exploration Pty Ltd (wholly owned subsidiary of Aruma Resources Limited)	100% Aruma Exploration Pty Ltd
P25/2073 P25/2074 P25/2075 P25/2076	100% Aruma Exploration Pty Ltd	100% Aruma Exploration Pty Ltd
P25/2215 P25/2216	100% Aruma Exploration Pty Ltd under transfer from Copley Pty Ltd	100% Aruma Exploration Pty Ltd under transfer from Copley Pty Ltd

Aruma Resources Limited



**QUARTERLY ACTIVITIES STATEMENT
FOR THE QUARTER ENDING 31 December 2014**

AUSTRALIA	Interest at beginning of Quarter	Interest at end of Quarter
Clinker Hill (Gold)		
P25/2201	100% Aruma Exploration Pty Ltd	100% Aruma Exploration Pty Ltd
Bulloo Downs Copper Project		
E52/2024	Option to earn-in for up to a 90% interest (Dynasty)	Option to earn-in for up to a 90% interest (Dynasty)
E52/2283	Option to earn-in up to a 90% interest (Atlas/Warwick)	Option to earn-in up to a 90% interest (Atlas/Warwick)
E52/2317	Option to earn-in up to a 90% interest (Atlas/Warwick)	Option to earn-in up to a 90% interest (Atlas/Warwick)
E52/2327	Option to earn-in up to a 90% interest (Atlas/Warwick)	Option to earn-in up to a 90% interest (Atlas/Warwick)
E52/2328	Option to earn-in for up to a 90% interest (Atlas/Warwick)	Option to earn-in for up to a 90% interest (Atlas/Warwick)
E52/2329	Nil	Option to earn-in for up to a 90% interest (Atlas/Warwick)
E52/2330	Nil	Option to earn-in for up to a 90% interest (Atlas/Warwick)
E52/2332	Option to earn-in for up to a 90% interest (Atlas/Warwick)	Option to earn-in for up to a 90% interest (Atlas/Warwick)
E52/2337	Option to earn-in up to a 90% interest (Atlas/Warwick)	Option to earn-in up to a 90% interest (Atlas/Warwick)
E52/2351	Option to earn-in up to a 90% interest (Atlas/Warwick)	Option to earn-in up to a 90% interest (Atlas/Warwick)
E52/2429	Nil	Option to earn-in up to a 90% interest (Atlas/Warwick)
E52/2464	Option to earn-in for up to a 90% interest (Dynasty)	Option to earn-in for up to a 90% interest (Dynasty)
E52/2802	Option to earn-in for up to a 90% interest (Atlas/Warwick) - Under application	Option to earn-in for up to a 90% interest (Atlas/Warwick) - Under application.
E52/2803	Option to earn-in up to a 90% interest (Atlas/Warwick)	Option to earn-in up to a 90% interest (Atlas/Warwick)
E52/2887	100% Aruma Exploration Pty Ltd. Under application and transfer from Plasia Pty Ltd. Option to acquire JV interest.	100% Aruma Exploration Pty Ltd. Transfer from Plasia Pty Ltd. Option to acquire JV interest.
E52/3096	100% Aruma Exploration Pty Ltd - Under application.	100% Aruma Exploration Pty Ltd- Under application.
E52/3172	Nil	100% Aruma Exploration Pty Ltd- Under application.
Jundee South (Gold)		
E53/1461	100% Aruma Exploration Pty Ltd	100% Aruma Exploration Pty Ltd

Aruma Resources Limited

ABN 77 141 335 364 ASX: AAJ
Suite 33, 18 Stirling Highway, Nedlands WA 6009
Locked Bag 2000, Nedlands WA 6909, Australia
T+61 8 6389 1799 | F +61 8 6389 0112 | W www.arumaresources.com