



17 June 2015

Presentation to Australian Copper Conference and Intended Annual Review of Paris Silver Resource

Attached is a presentation to be given by IVR Managing Director, John Anderson, to the Australian Copper Conference on Wednesday 17 June 2015. The presentation emphasises the Company's focus on adding value to & building on the Paris silver deposit by:

- Conducting its annual review of the Paris resource using additional 2014 drilling on northern extensions and the better understanding of the geology developed since the resource was first announced in October 2013
- Exploration targeting for potential Paris- sized silver deposits
- Exploration targeting of much larger silver and copper opportunities in the Paris district

For further information contact:

Mr John Anderson
Managing Director
Investigator Resources Limited
Phone: 07 3870 0357

Discovery & development opportunities for the Paris silver copper district

**INVESTIGATOR
RESOURCES
LIMITED**



ASX : IVR

John Anderson – Managing Director

Australian Copper Conference

17th June 2015

Disclaimer & Competent Person Statement



DISCLAIMER

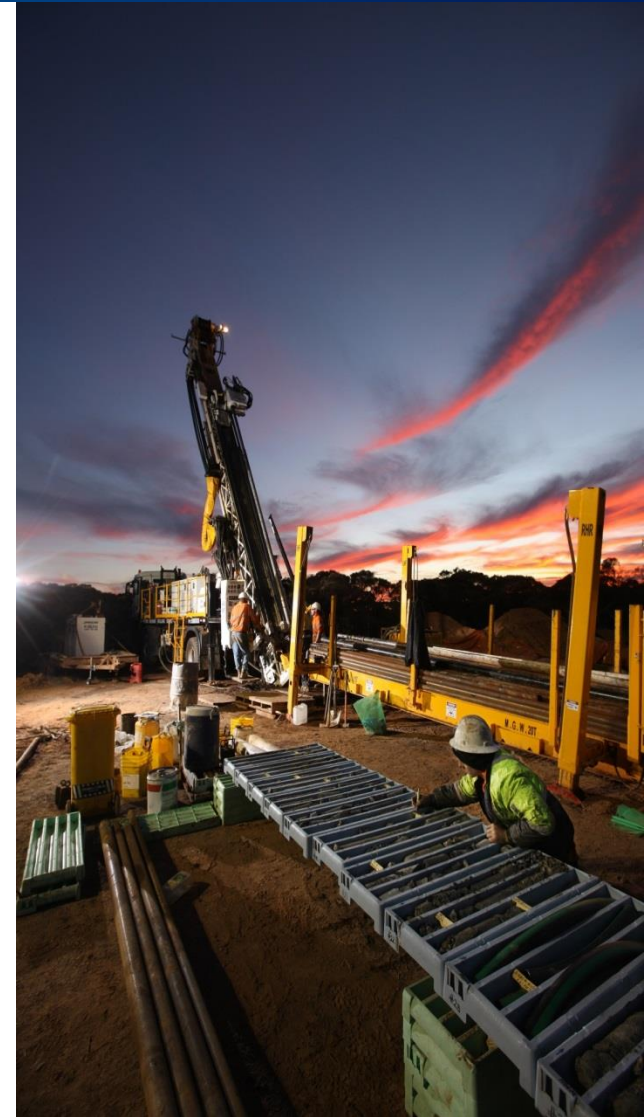
The information in this presentation is published to inform you about Investigator Resources Limited and its activities. Some statements in this presentation regarding estimates or future events are forward looking statements. They involve risk and uncertainties that could cause actual results to differ from estimated results. All reasonable effort has been made to provide accurate information, but we do not warrant or represent its accuracy and we reserve the right to make changes to it at any time without notice.

To the extent permitted by law, Investigator Resources Limited accepts no responsibility or liability for any losses or damages of any kind arising out of the use of any information contained in this presentation. Recipients should make their own enquiries in relation to any investment decisions.

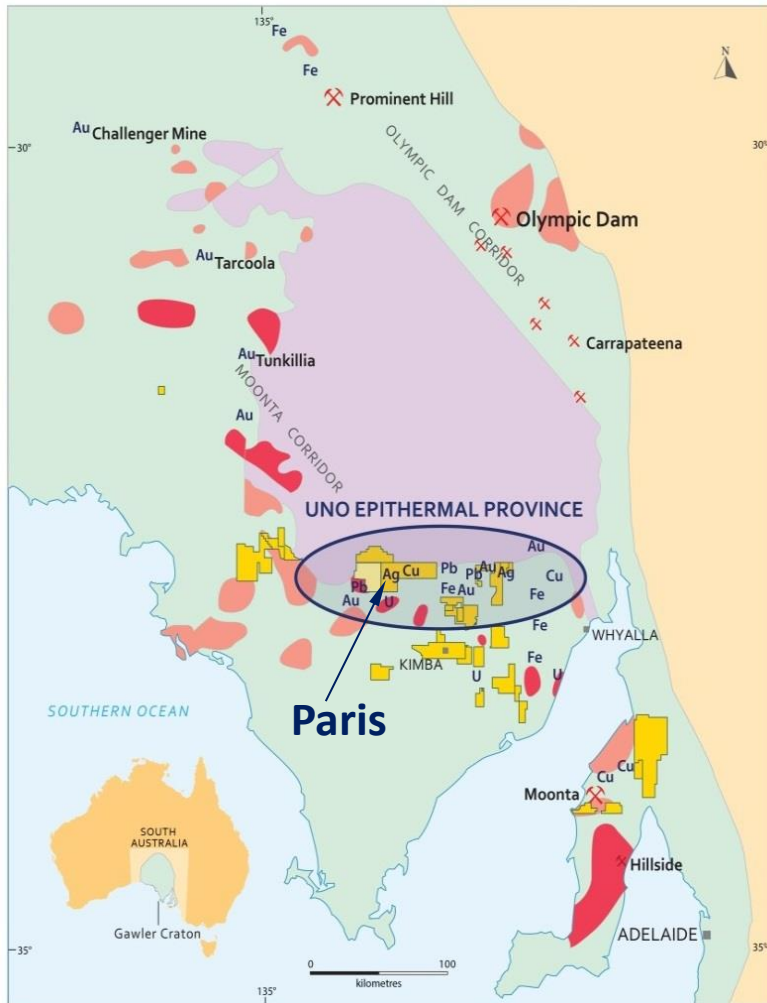
COMPETENT PERSONS STATEMENT

The information in this presentation relating to exploration results is based on information compiled by Mr. John Anderson who is a full time employee of the company. Mr. Anderson is a member of the Australasian Institute of Mining and Metallurgy. Mr. Anderson has sufficient experience of relevance to the styles of mineralisation and the types of deposits under consideration, and to the activities undertaken, to qualify as a Competent Person as defined in the 2012 Edition of the Joint Ore Reserves Committee (JORC) Australasian Code for Reporting of Exploration Results, Mineral Resources and Ore Reserves. Mr. Anderson consents to the inclusion in this report of the matters based on information in the form and context in which it appears.

The information in this presentation that relates to Mineral Resources Estimates at the Paris Silver Project is extracted from the report entitled "Maiden Resource Estimate for Paris Silver Project, South Australia" dated 15 October 2013 and is available to view on the Company website www.investres.com.au. The Company confirms that it is not aware of any new information or data that materially affects the information included in the original market announcement and that all material assumptions and technical parameters underpinning the estimates in the relevant market announcement continue to apply and have not materially changed. The company confirms that the form and context in which the Competent Person's findings are presented have not been materially modified from the original market announcement.



IVR's focus on the emerging Uno Province - first mover



Initial resource (October 2013)

- Paris 20Moz silver deposit is significant
 - ✓ New geology & deposit styles for SA
 - ✓ Internal studies on options
 - ✓ Resource review to commence

Excellent flow-on discovery opportunities

- Diverse potential for large silver & copper deposits
 - ✓ Imiter high-grade silver
 - ✓ Skarn & breccia/porphyry copper
- Improved targeting after challenging 2014
 - ✓ Rolling out upgraded mineral systems model (dykes patterns, alteration, metal zoning)

Maximising use of available cash

- Capitalising on Know How & drillcore assets
 - ✓ Remapping & relogging
 - ✓ Collaborative research
 - ✓ Prioritising multiple new targets

Drilling best opportunities from mid-2015



Capital Structure

ASX listed since 2007	IVR
Shares (ordinary)	462.3M
Options (Listed)	114.2M
Options (unlisted)	17.4M
Share Price (15 June 2015)	1.4c
Options Price “ “ “	0.3c
Market Cap (A\$m)	\$6.5M
Cash (31 March 2015)	\$3.4M

Share Register as at 15 June 2015

CITIC Australia (Since IPO 2007)	14.5%
Acorn Capital (Since 2011)	6.0%
Board & Management	2.7%
Top 20	37.0%
Total shareholders	3,400

Board & Management

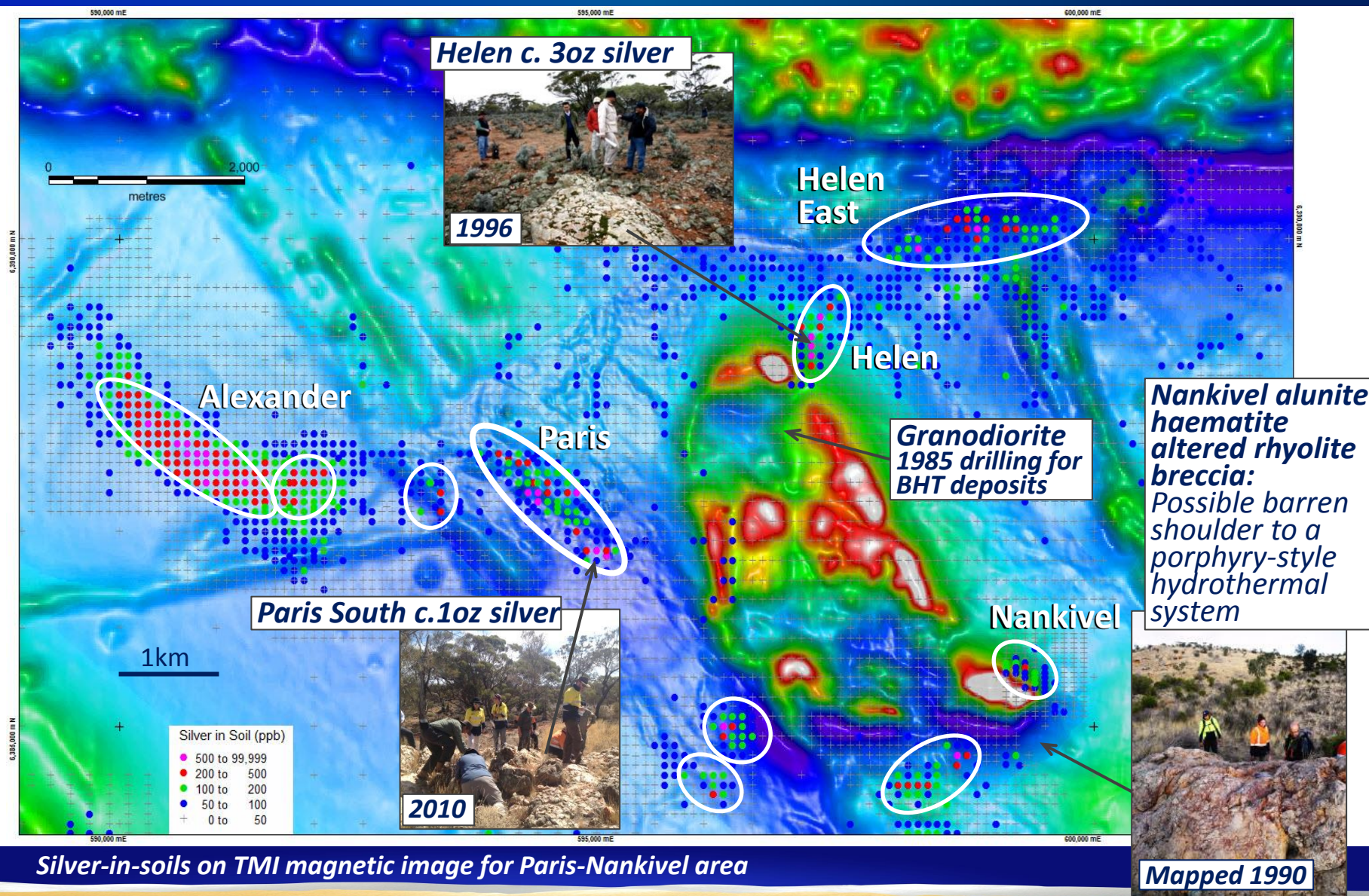
Roger Marshall OBE	Chairman
Bruce Foy	Non Exec Director
David Jones	Non Exec Director
John Anderson	Managing Director
Garry Gill	Co. Secretary/CFO
Alex Thin	Commercial Manager

Offices

Corporate - Toowong in Brisbane (Qld)
Operations - Norwood in Adelaide (SA)

2009–2011: Initial success of Paris silver discovery

Came from soil geochemistry & unmapped epithermal outcrops



Silver-in-soils on TMI magnetic image for Paris-Nankivel area

2012-3 drill out of Paris silver deposit – maiden resource October 2013

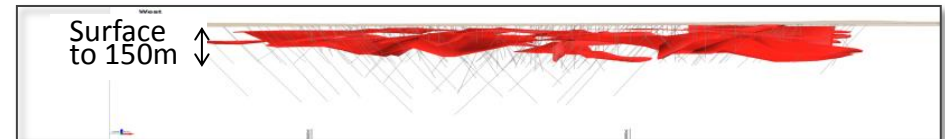
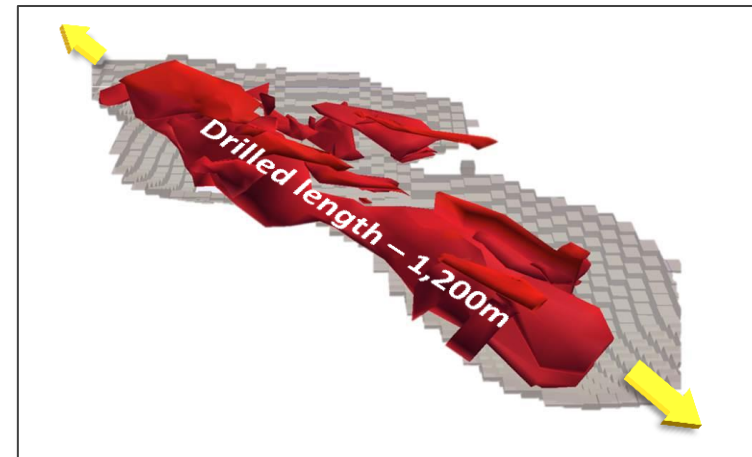


Category	Tonnes	Grade	Contained silver	Grade	Contained Lead
Inferred	5.9Mt	110g/t Ag	20Moz	0.6% Pb	38kt

Based on a cut-off grade of 30g/t Ag

Five Key Points:

1. **The Grade** - 110g/t Ag grade is among the highest silver grades in Australia
2. **The Ounces** - 20Moz silver
3. **It's Shallow & Soft** - 5 to 150m from surface
4. **Preliminary Metallurgy** – positive recoveries indicate conventional pathways & optimisation potential
5. **High grade component** - About 30% of the resource tonnes contains 60% of the contained silver ounces



Paris target model - cross section

Potential for multiple centres & associated deposit styles



WARM ————— Paris target vectors ————— **HOT**



Distal volcanic & granite breccia



Altered overlying volcanics



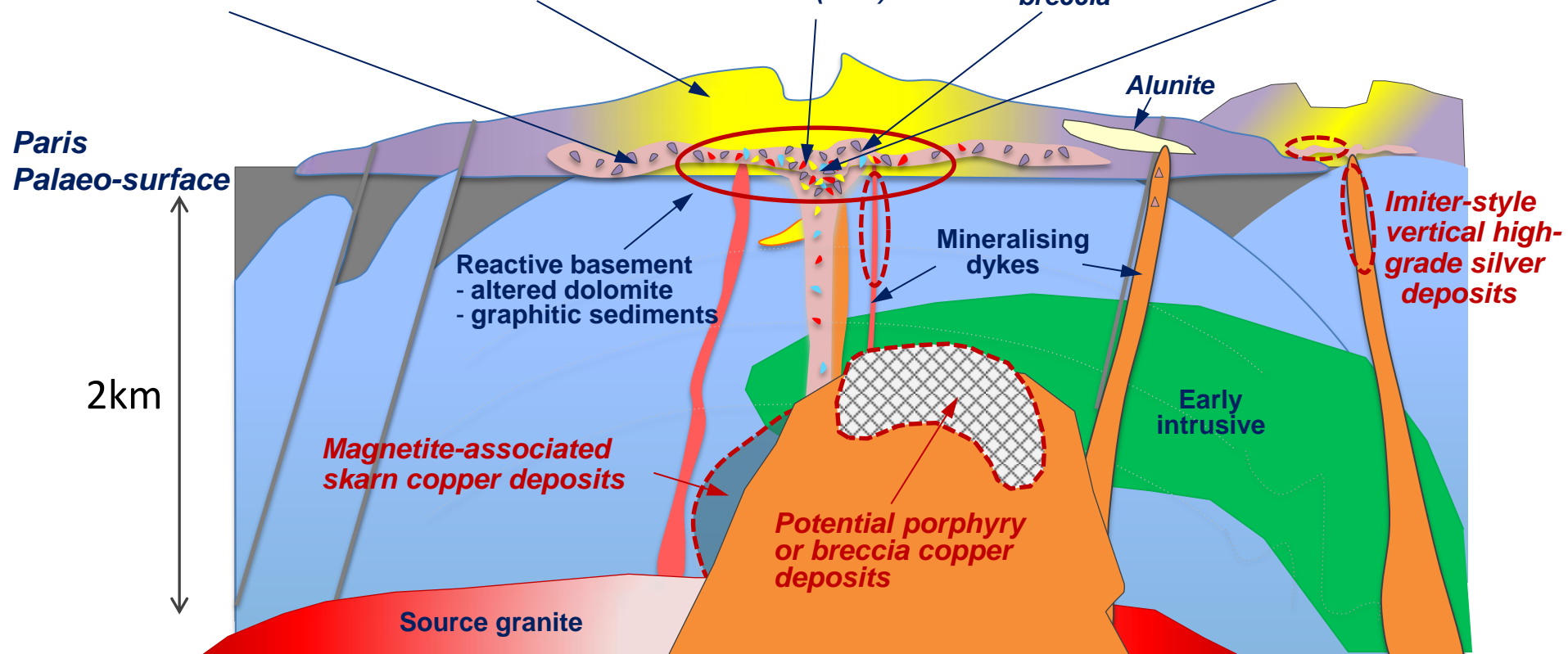
Altered polymict breccia (vent)



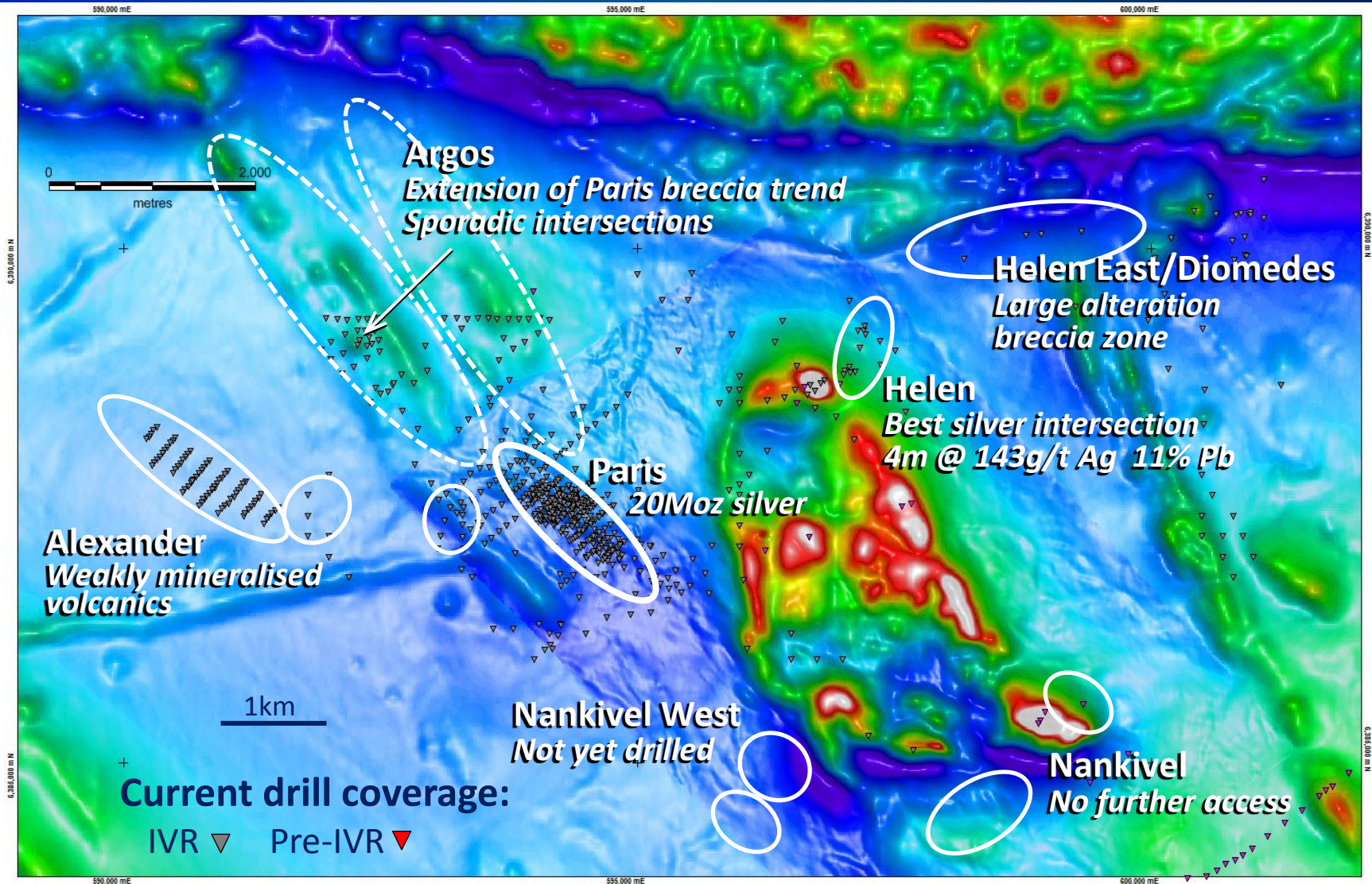
Hydrothermal breccia



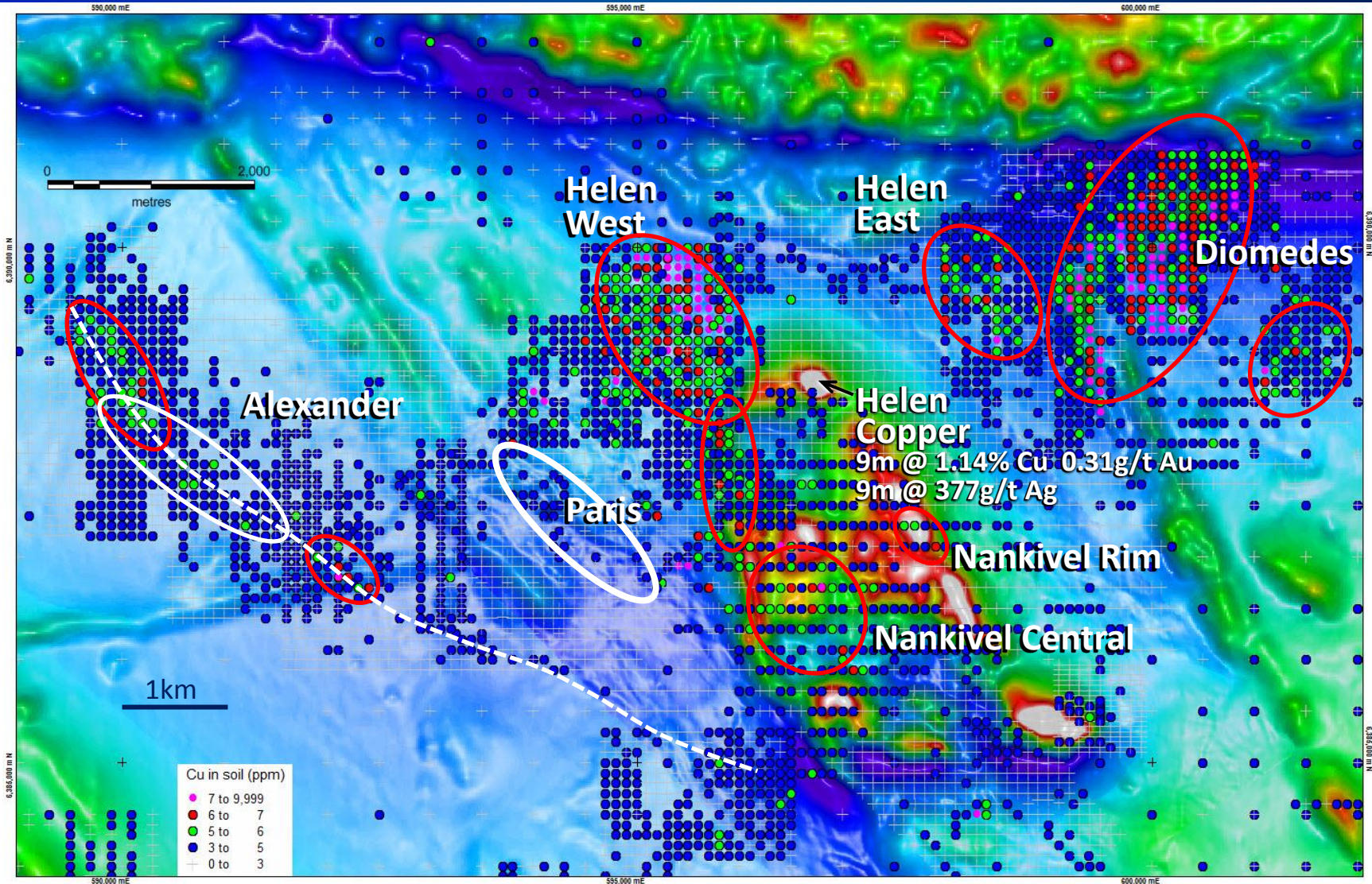
Sulphide fragments



2014 drilling of satellite soil targets – mixed results

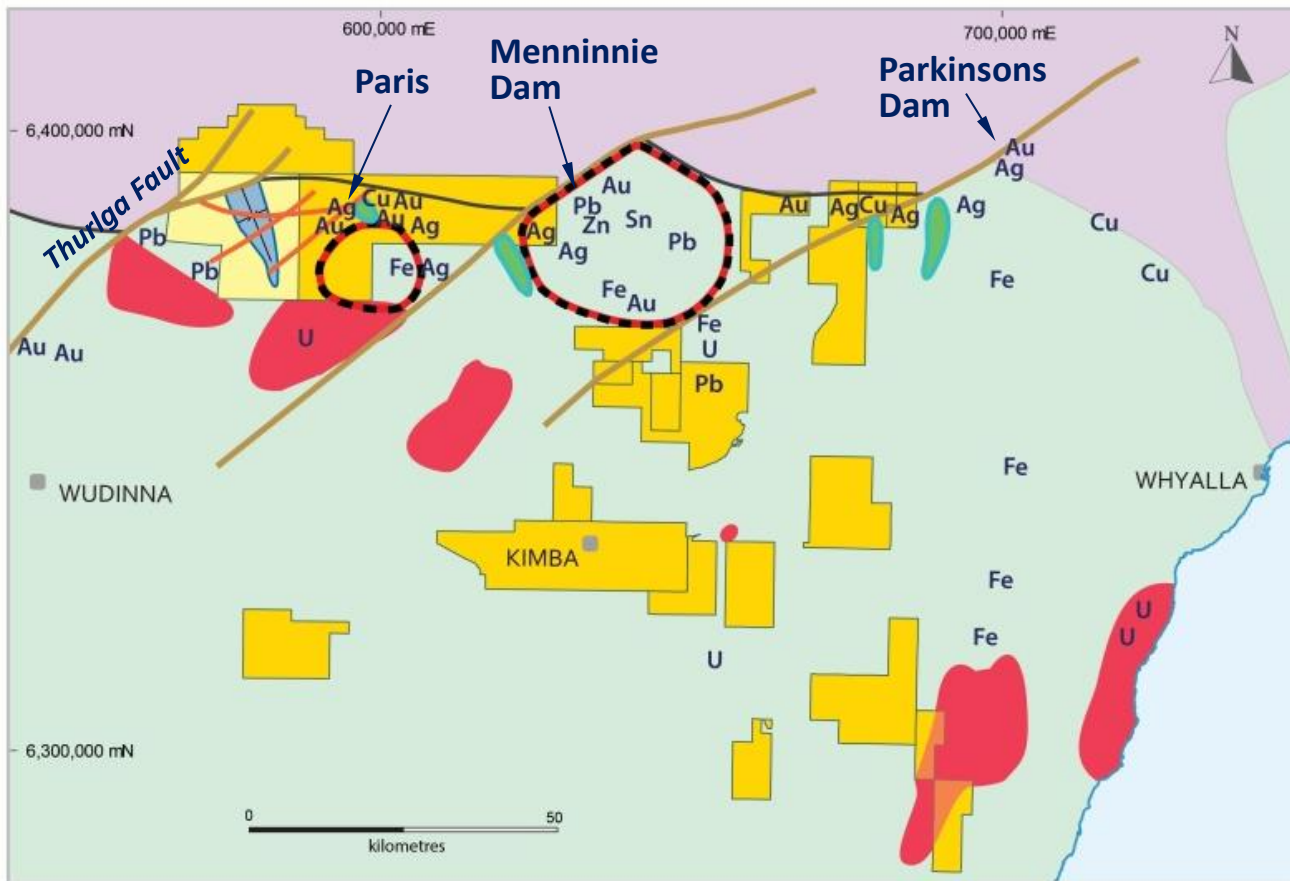


Copper success at Helen shows potential but raised questions on soil geochem (no signature at Helen; chlorite alteration at Diomedes etc.)



Copper-in-soils on TMI magnetic image for Paris-Nankivel area

Uno Province in 2015 – robust regional metallogenic model



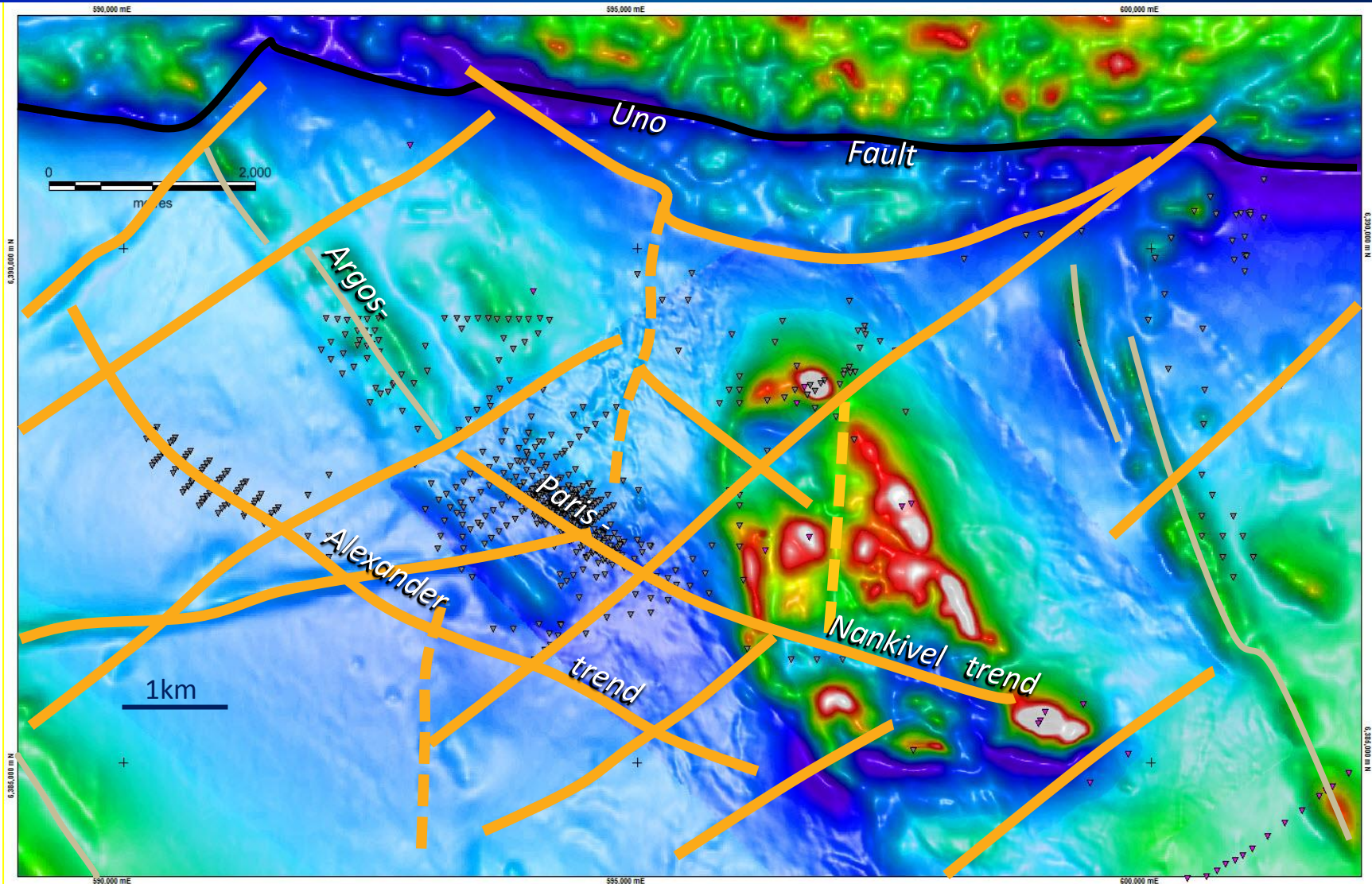
-  IVR Tenure
-  Thurlga JV Tenure
-  Mineralising Dyke (Paris Area)
-  Disrupting NE Fault
-  Uno Fault
-  Thurlga Syncline
-  Volcanic & Subvolcanic Intrusive Complex
-  Gawler Range Volcanics
-  'Hot' Hiltaba Source Granite
-  Early Intrusive
-  Pre-Hiltaba Basement Rock

Upgraded model for Paris system

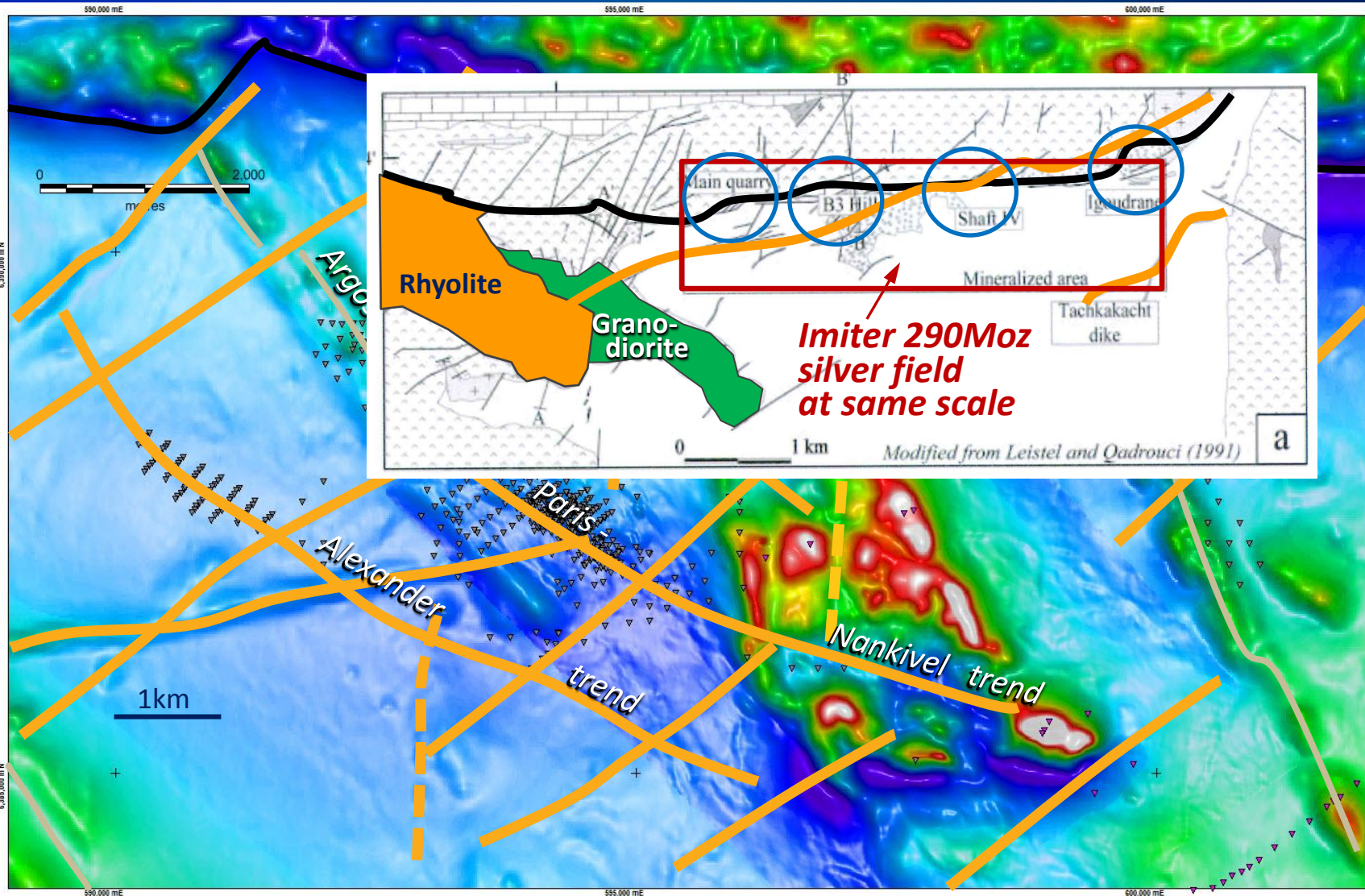
Early structures & intrusives

Scalloped Uno Fault splays

Late NE rhyolite dykes

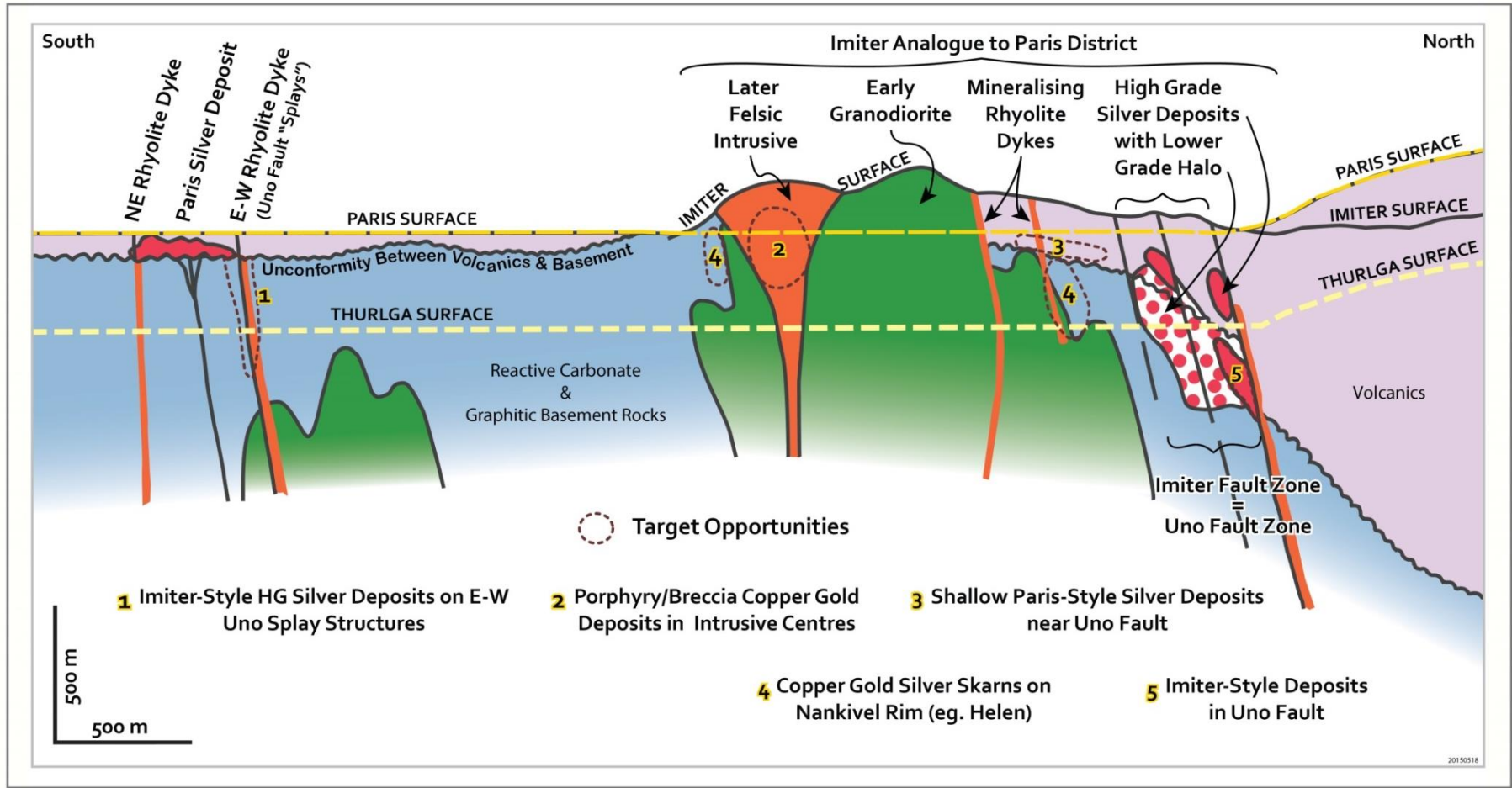


Expanded target potential – close similarities in setting with Moroccan world-class high-grade silver mine



Composite regional cross section - strong Imiter analogy

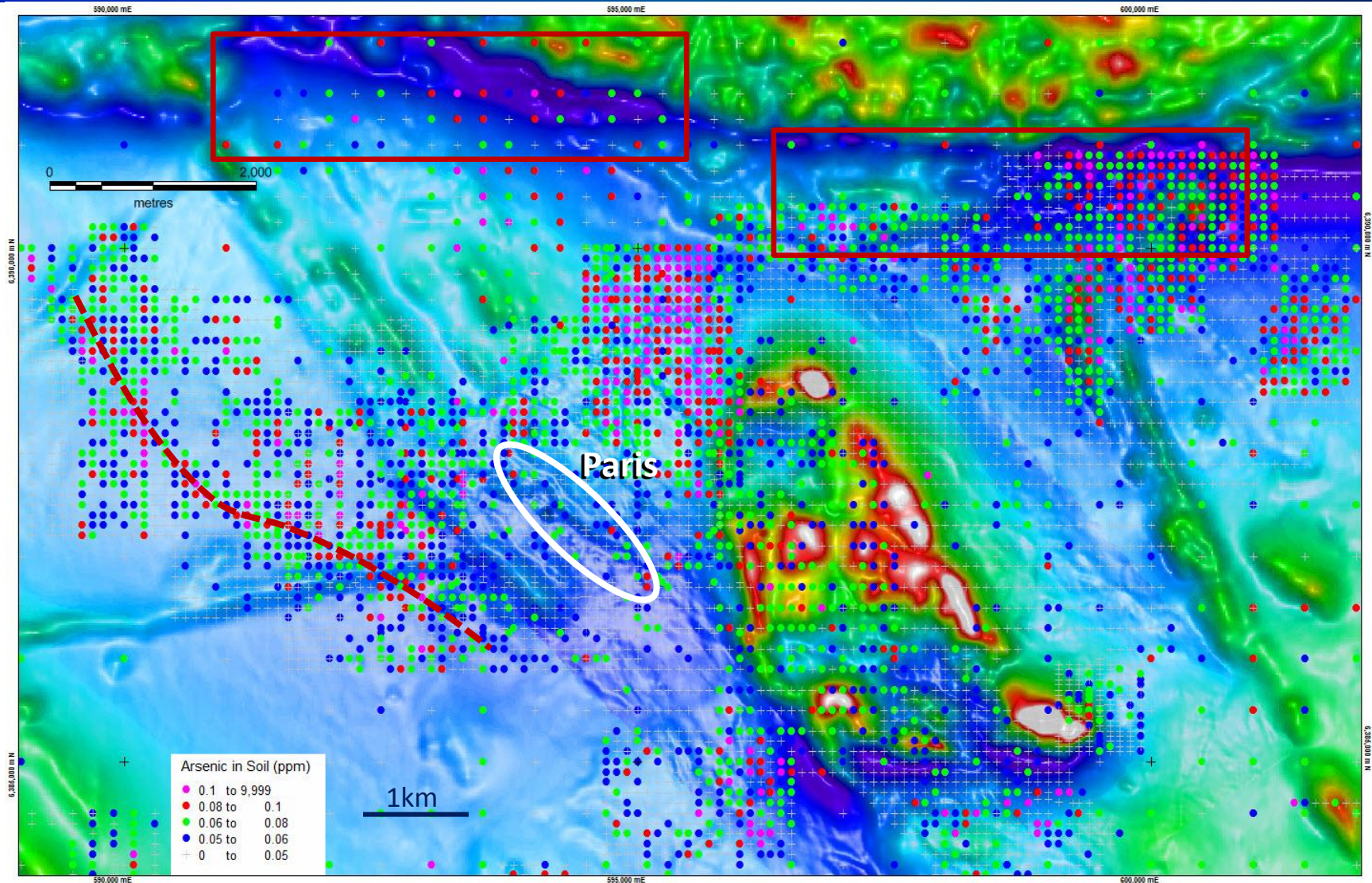
Potential around Paris for vertical silver deposits with subtle soil footprints



Imiter, Morocco: Historic resource 290Moz silver; Annual production c. 7Moz; Grade c. 440g/t Ag

As in the Paris district: Preserved ancient epithermal; Host– base of volcanics in regional E-W fault; Adjacent to reactive sediments; Early granodiorite; Mineralising NE rhyolite dykes; Large low-grade halo.

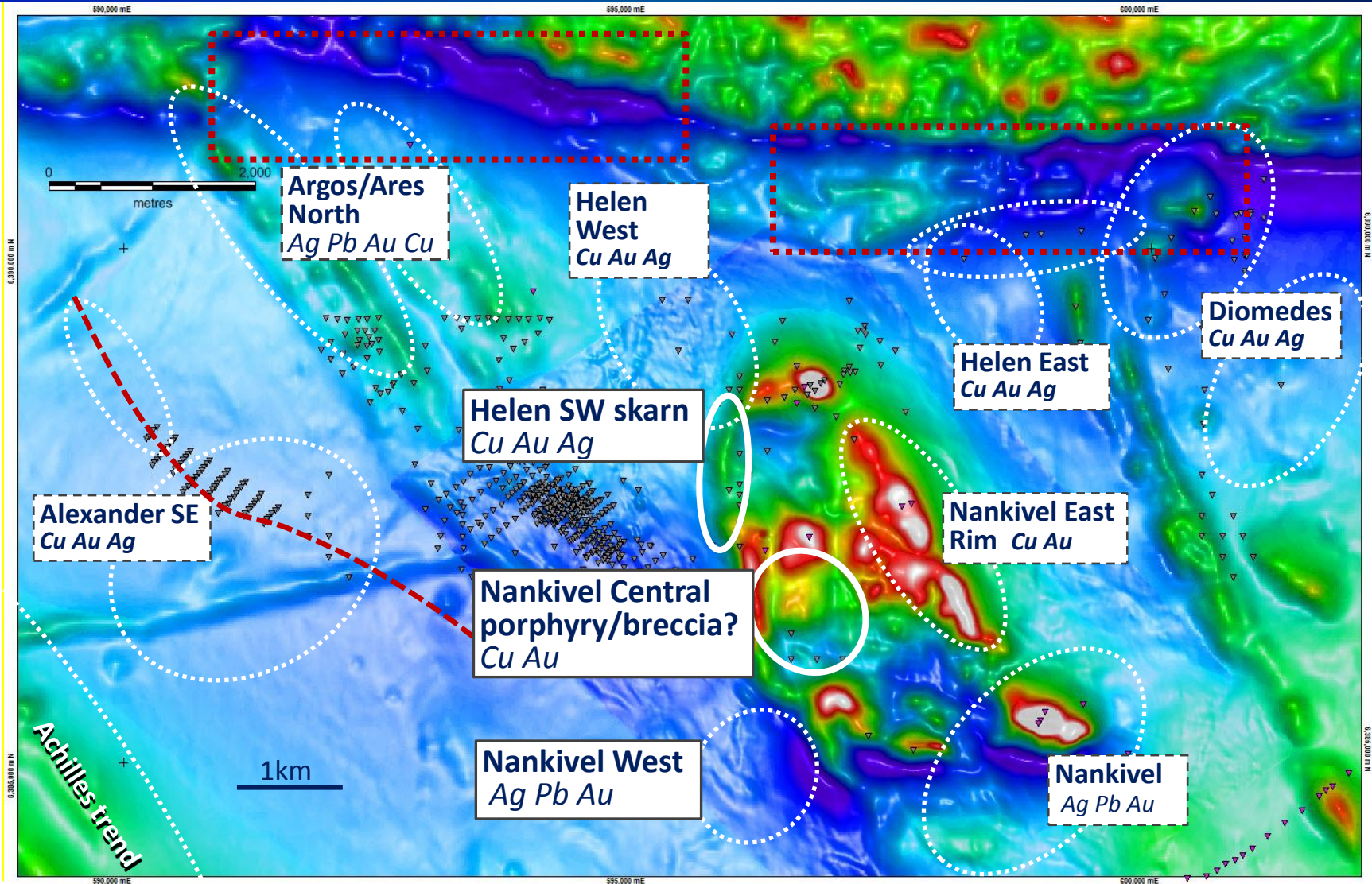
Paris field (100% IVR): Remapping & reviewing extensive datasets e.g. Arsenic as a pathfinder to possible fault-hosted Imiter-style targets



Target Prioritisation

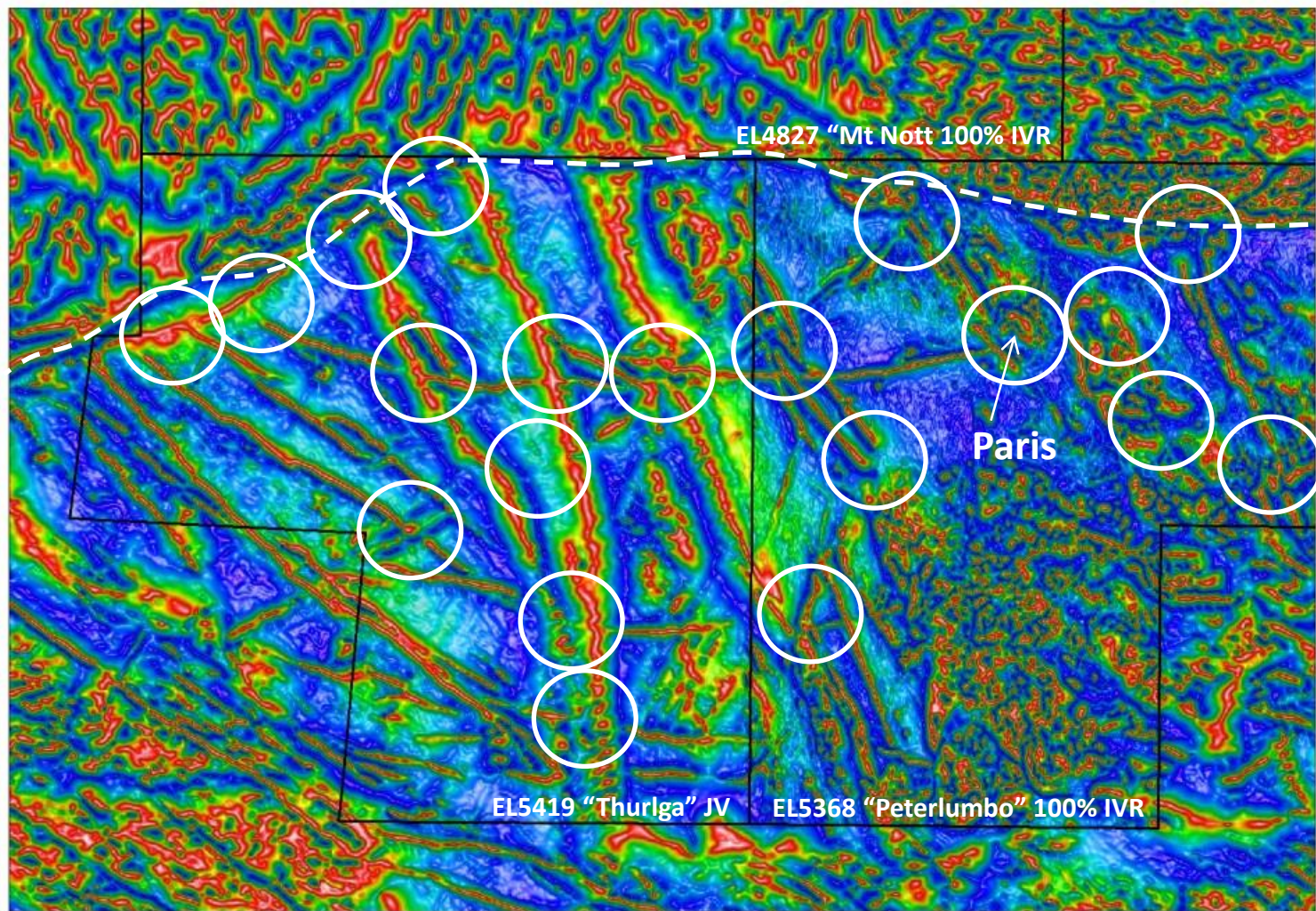
○ Drill mid-year

○ Subject to remapping & review
(some targets subject to heritage survey)



Paris district – abundant potential, targets & room

Roles of dykes, structures & intersections in locating mineralisation



Preliminary targets in magnetics

Imiter 290Moz silver field at same scale

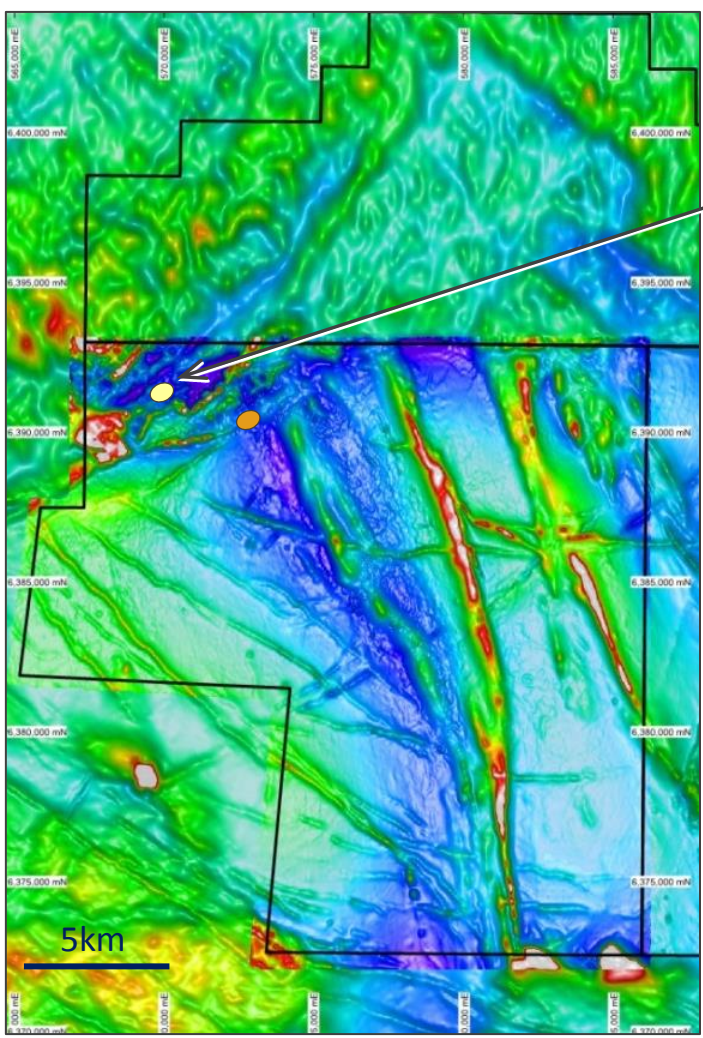


5km

Tilt magnetic image; Thurlga Joint Venture with Adelaide Resources Limited

Rolling out the IVR approach: e.g. Thurlga Joint Venture

- magnetics, aerial ortho-imagery, prospecting

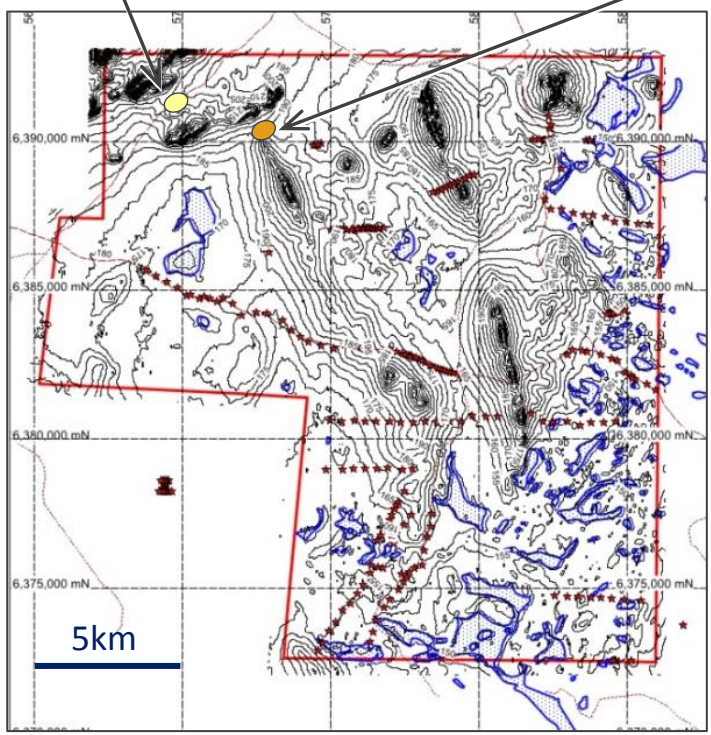


Sunset pits – altered volcanic breccia



Rare exposure of Uno Fault Zone

containing Ironstone breccia (As Ba anomalous)



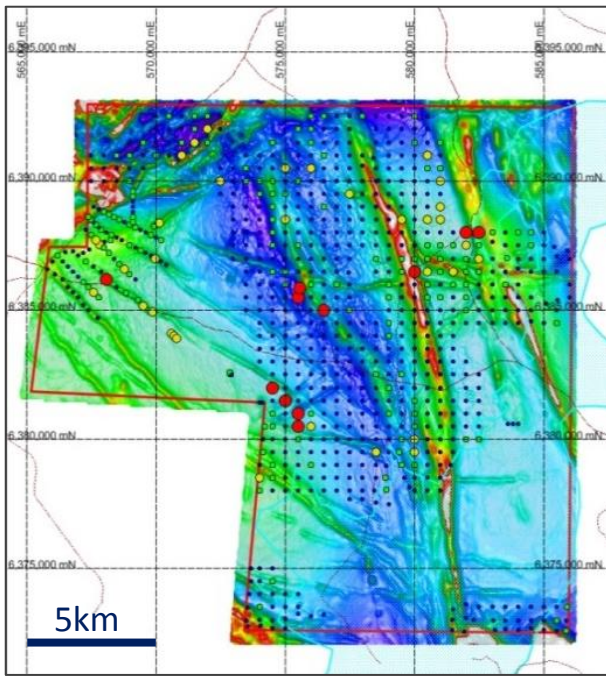
& Interpreted rhyolite breccia



A) TMI/RTP Magnetic image; B) Topographic contour image (5m contours: red stars are shallow historical drill holes)

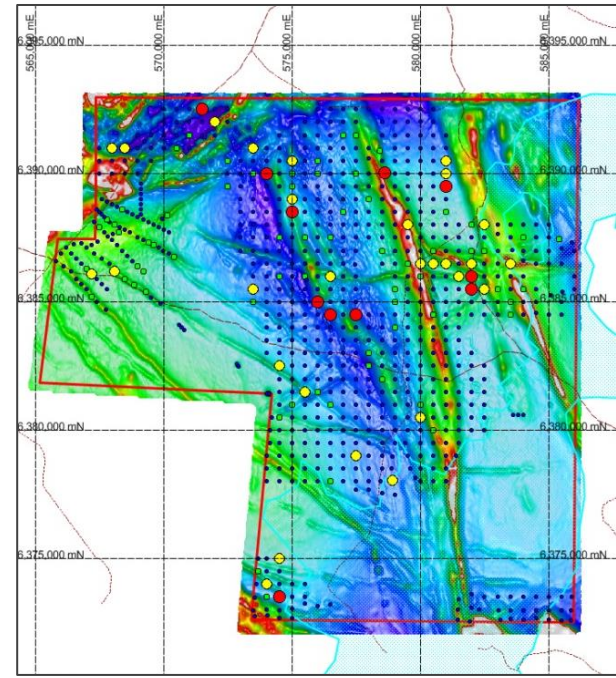
IVR approach: e.g. Thurlga JV

- soil geochemistry remains a key exploration ingredient



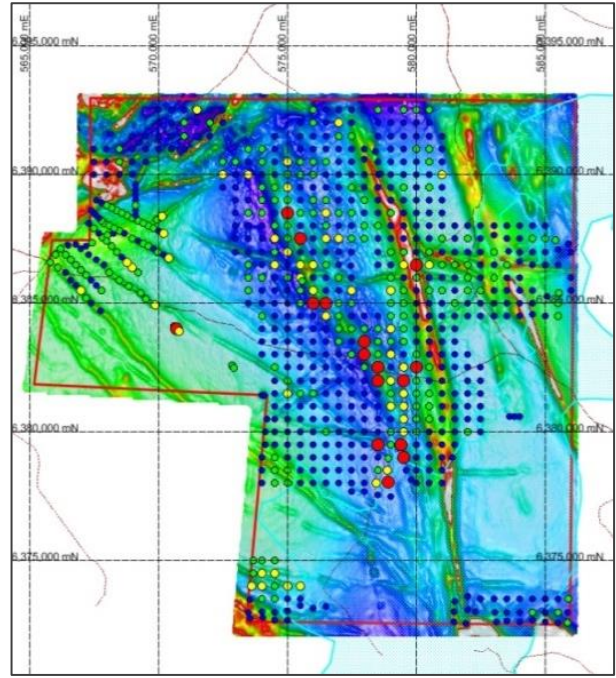
Silver
(TL8-ppb)

- 50 to 200
- 35 to 50
- 25 to 35
- 0 to 25



Copper
(ppm)

- 1 to 4.82
- 0.65 to 1
- 0.5 to 0.65
- 0.02 to 0.5

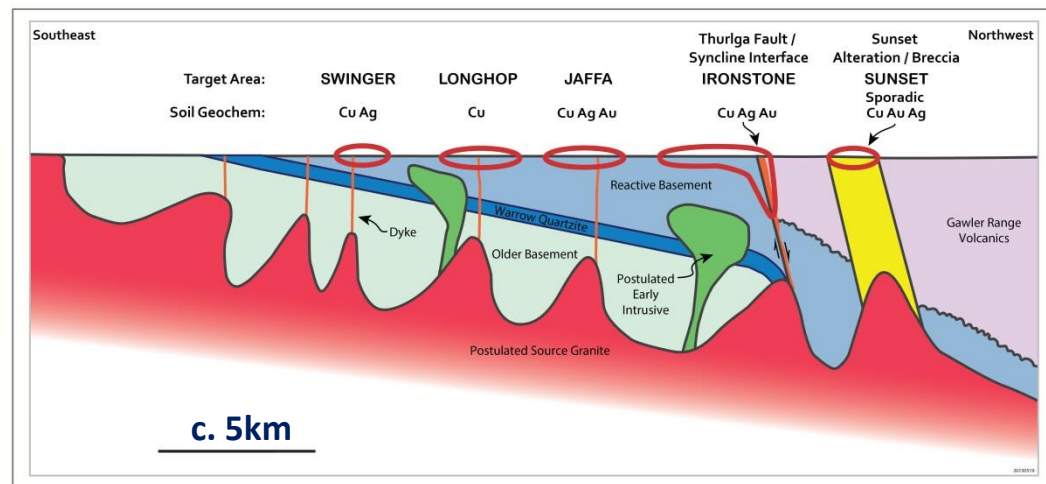
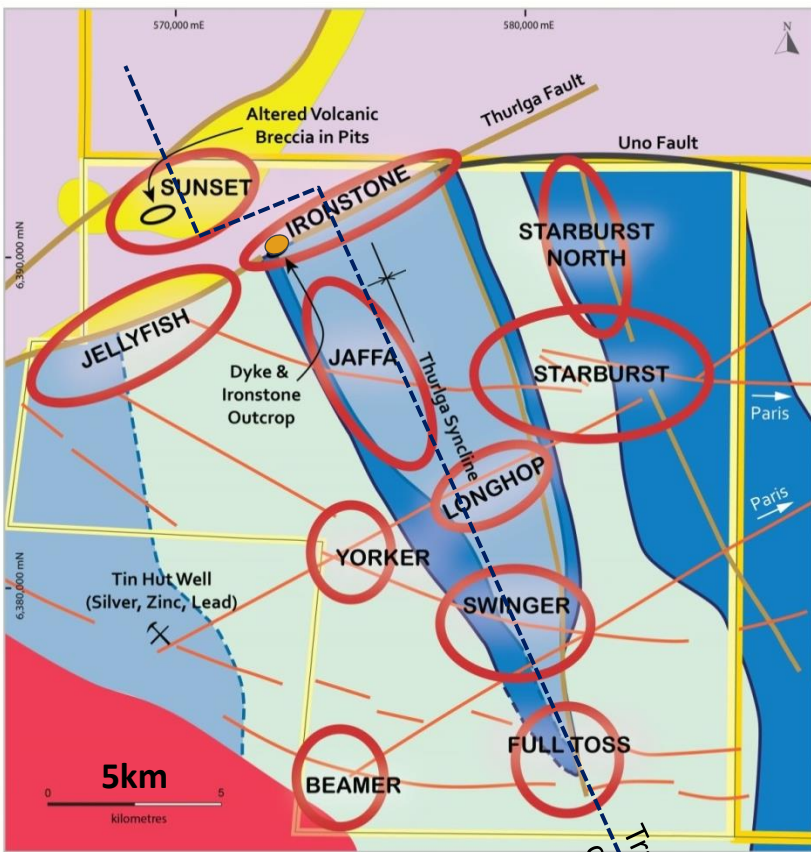


Gold
(ppb)

- 5 to 6.6
- 4 to 5
- 3 to 4
- 0.4 to 4

Recent results: First-pass soil geochemistry delineates broad coherent anomalies coincident with preliminary magnetic targets based on Paris model

High-priority Thurlga targets – infill soil sampling & prospecting underway



- Thurlga JV Tenure
- IVR Tenure
- Target Area
- Fault



Imler field template at same scale

- HILTABA**
 - Mineralising Dyke & Structure
 - Altered Magnetic Pattern
 - Gawler Range Volcanic
 - 'Hot' Source Granite
 - Postulated early intrusive
- BASEMENT**
 - Hutchison Carbonate / Graphitic Sediment Warrow Quartzite
 - Older Archaean



- **An annual review of the Paris resource using:-**
 - *Additional 2014 drilling on northern extensions*
 - *Better understanding of geology & mineralisation*
 - *Different statistical methodologies for the complex style of deposit*
 - *On-going internal studies of development options (e.g. considering leach/dore vs. concentrate production etc.)*

- **Exploration targeting for potential Paris-sized silver deposits nearby:-**
 - *To seek a more robust project through synergy with a single mill*
 - *Multiple Opportunities: e.g. Yorker, Jaffa, Nankivel West, Diomedes, Argos North*
 - *Aim to drill later in 2015 after refining targets & access clearances*

- **Exploration targeting of much larger silver & copper opportunities in the Paris district**
 1. **Imler-style silver deposits - high-grade vertical silver deposits along Uno Fault & splays**
 - *Currently prospecting key target areas: e.g. Thurlga Ironstone, Diomedes North*
 - *Aim to drill late 2015*

 2. **Porphyry, breccia & skarn copper (gold, silver) deposits – adjacent intrusives**
 - *e.g. Nankivel Central, Helen SW, Swinger, Longhop*
 - *Aiming to drill Nankivel/Helen ASAP (with \$100k government funding assistance) & new targets Swinger/Longhop later in 2015*