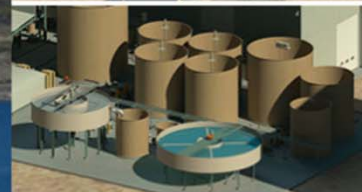




GREENLAND
MINERALS AND ENERGY LTD

Developing the world's premier specialty metals project



Kvanefjeld Pilot Plant - EURARE - GTK Laboratories, Finland

www.ggg.gl

Important Notice



This presentation contains only a brief overview of Greenland Minerals and Energy Ltd (Greenland Minerals) and its respective activities and operations. The contents of this presentation may rely on various assumptions and subjective interpretations which are not possible to detail in this presentation and which have not been subject to any independent verification.

This presentation contains a number of forward looking statements. Known and unknown risks and uncertainties, as well as factors outside of Greenland Minerals' control, may cause the actual results, performance and achievements of Greenland Minerals to differ materially from those expressed or implied in this presentation.

To the maximum extent permitted by law, Greenland Minerals and its officers, employees and advisers are not liable for any loss or damage (including, without limitation, any direct, indirect or consequential loss or damage) suffered by any person directly or indirectly as a result of relying on this presentation or otherwise in connection with it.

The information contained in this presentation is not a substitute for detailed investigation or analysis of any particular issue and has been prepared without consideration of your objectives and needs and financial position. Current and potential investors and shareholders should seek independent advice before making any investment decision in regard to Greenland Minerals or its activities.

JORC Code (2012) Compliance – Consent of Competent Persons

Competent Person Statement

The information in this presentation that relates to Mineral Resources is based on information compiled by Robin Simpson, a Competent Person who is a Member of the Australian Institute of Geoscientists. Mr Simpson is employed by SRK Consulting (UK) Ltd ("SRK"), and was engaged by Greenland Minerals and Energy Ltd on the basis of SRK's normal professional daily rates. SRK has no beneficial interest in the outcome of the technical assessment being capable of affecting its independence. Mr Simpson has sufficient experience that is relevant to the style of mineralisation and type of deposit under consideration and to the activity being undertaken to qualify as a Competent Person as defined in the 2012 Edition of the 'Australasian Code for Reporting of Exploration Results, Mineral Resources and Ore Reserves'. Robin Simpson consents to the inclusion in the report of the matters based on his information in the form and context in which it appears.

The mineral resource estimate for the Kvanefjeld Project was updated and released in a Company Announcement on February 12th, 2015. There have been no material changes to the resource estimate since this announcement.

About GTK Laboratories

Well Respected Globally with Great Facilities



- Located in Outokumpu, Finland
- Part of the Geological Survey of Finland
- Government owned facilities
- Internationally recognised for pilot plant and laboratory testwork
- Extensive flotation experience
- Well maintained facilities



Kvanefjeld Project Pilot Plant

GTK Mineral Processing Laboratories



About this Pilot Plant

Significant Tonnage of Ore Treated

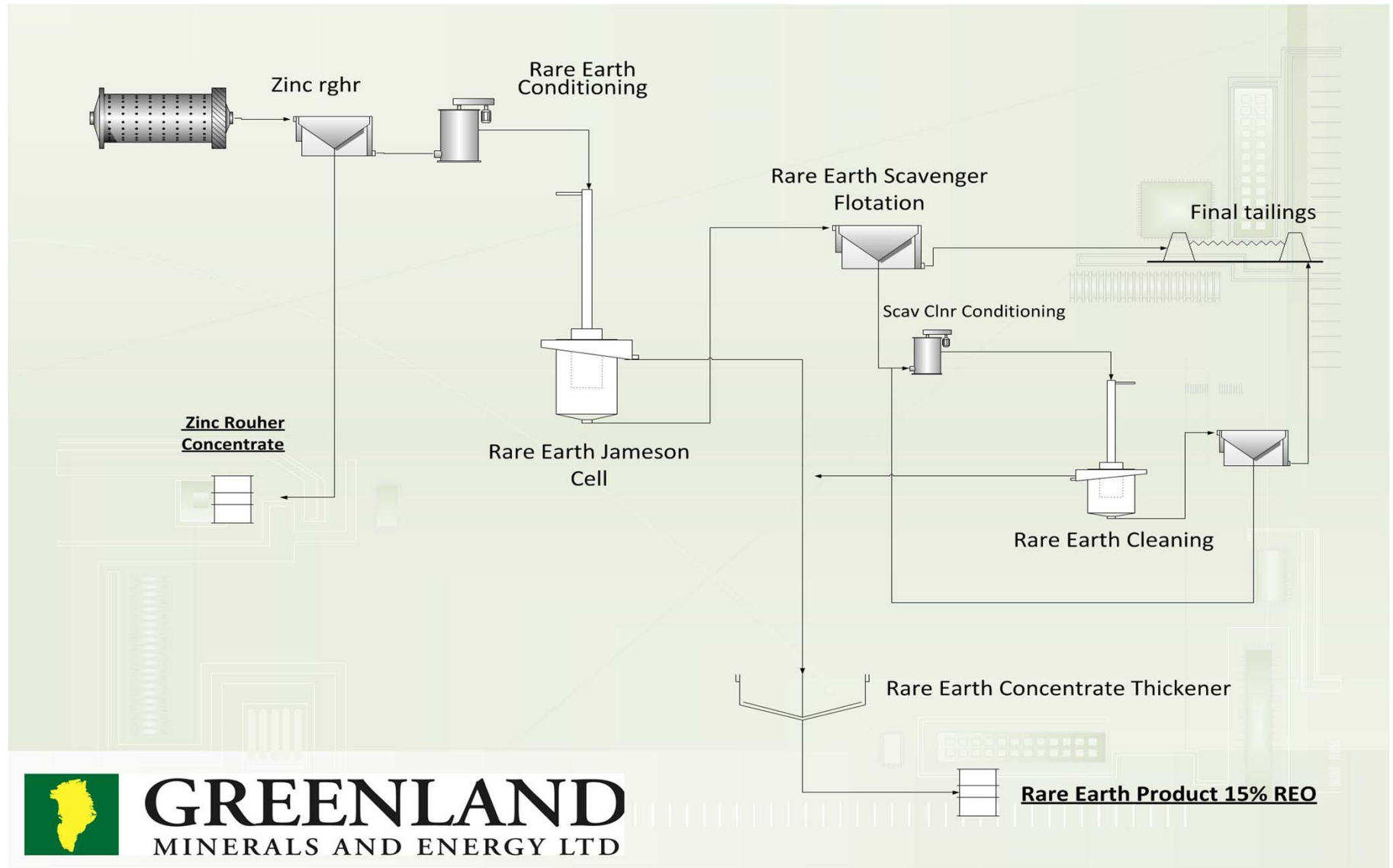


- **3rd, and largest, concentrator (beneficiation) pilot plant performed**
 - **Previously Aug'11 and November'12**
- **26 tonnes of ore treated over 100 hours continuously**
- **Scale up ratio = 1500:1**
- **Commercial type equipment used**
- **Part of the EURARE Program**
 - The EURARE program aims to encourage the sustainable supply of EU rare earth raw materials.



Pilot Plant Flowsheet

Latest Flotation Cell Technology Applied to Flowsheet



Kvanefjeld Project

Modelling Assumptions

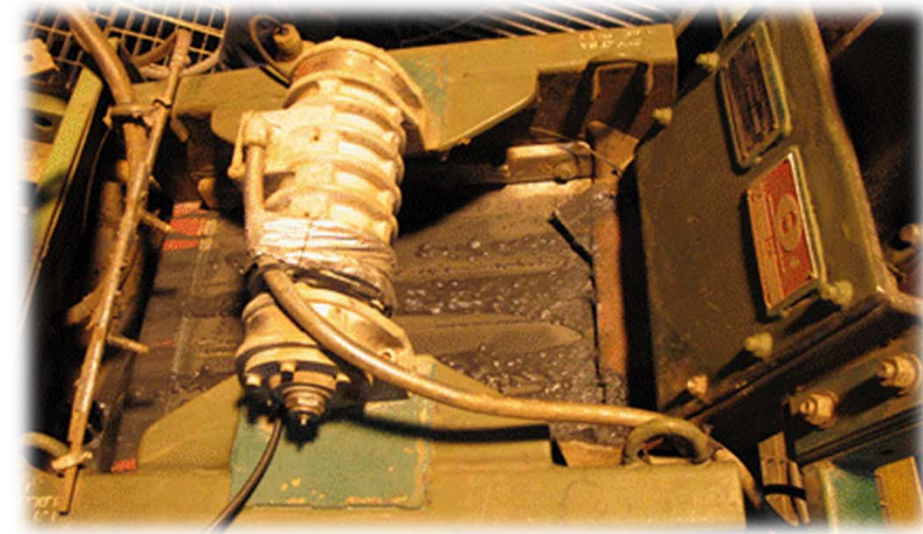
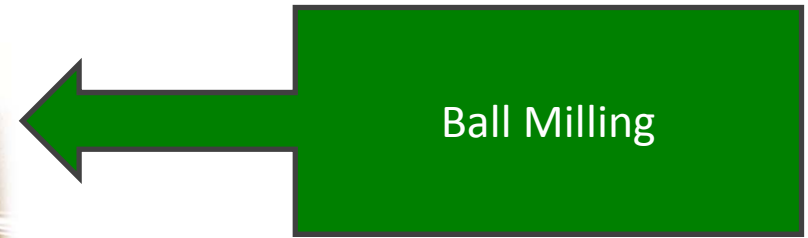


- Plant operated April/May 2015
- 26 tonnes of ore treated over 100 hours continuously



Milling

Freshly Milled Ore - at P80 = 71 micrometers



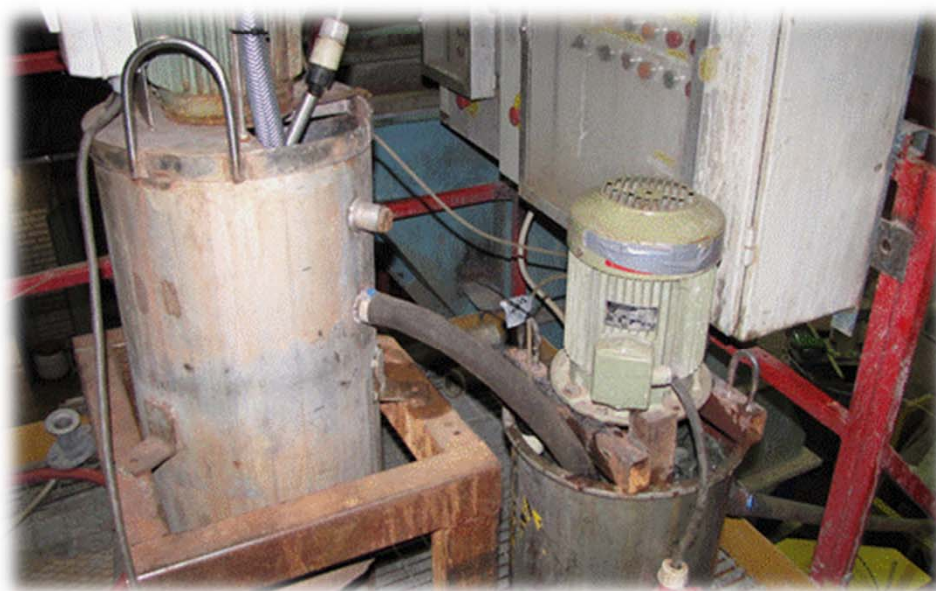
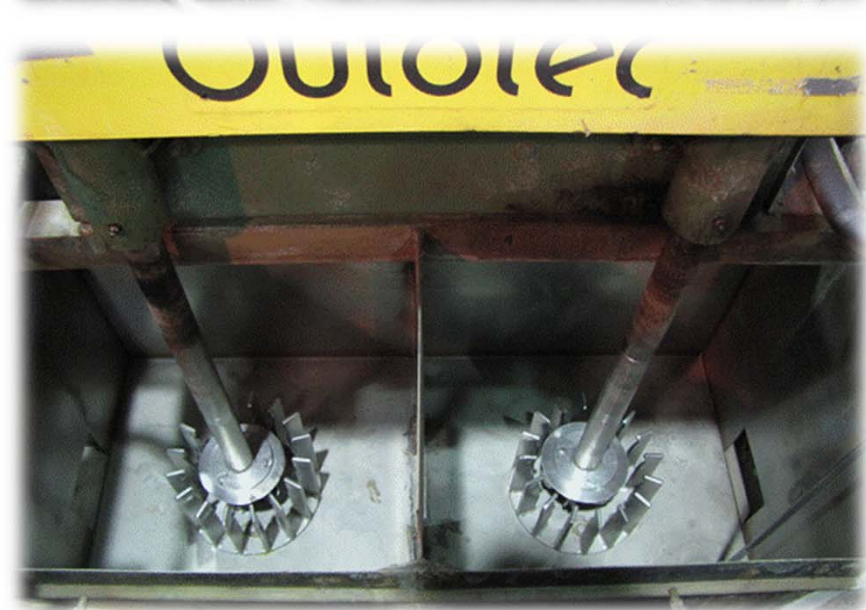
Zinc Flotation

Zinc Minerals Removed to Improve Rare Earth Concentrate



Zinc Rougher Flotation

Zinc Flotation Conditioning



Rare Earth Flotation Conditioning

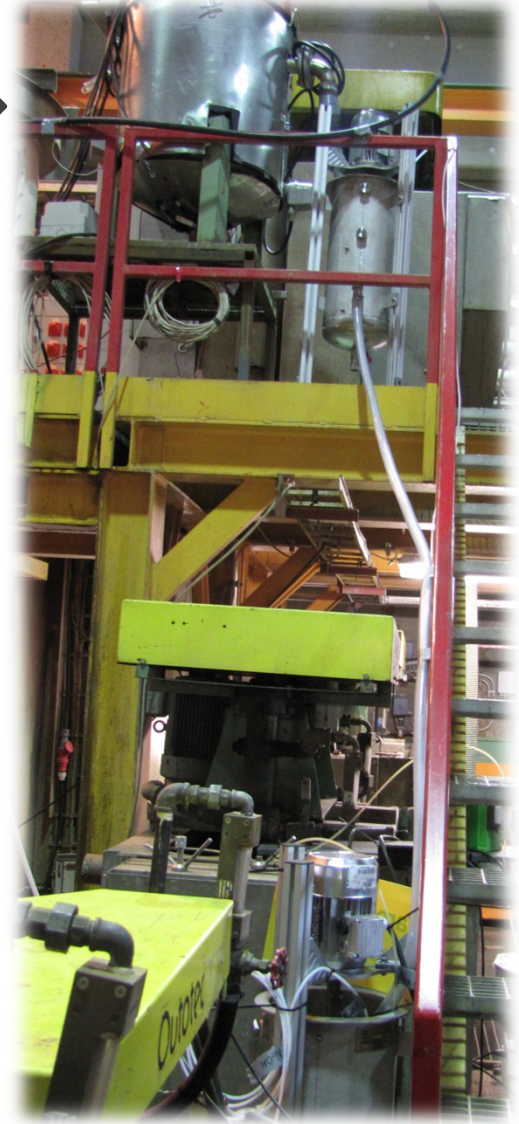
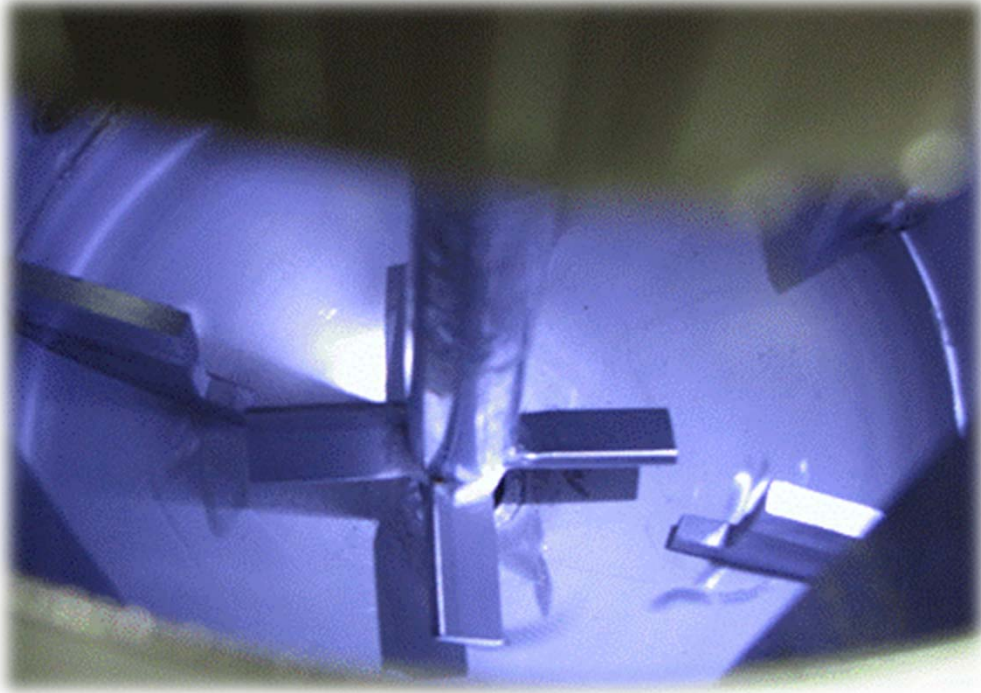
High Intensity Conditioning Applied Successfully



View Inside Conditioning Tank



Pilot Plant Conditioning Circuit



Jameson Flotation Cells

Latest Flotation Cell Technology Well-Tested for Kvanefield



GLENCORE TECHNOLOGY

Jameson Flotation Cell Set Up

Final Rare Earth Concentrate
>12% REO

Jameson Flotation Cell Internals



Scavenger Flotation

Conventional Flotation Cells Applicable



Rare Earth Concentrate on First Scavenger



Scavenger Concentrate report for Additional Cleaning



Cleaner Flotation

Additional Cleaning Applied to Produce Final Concentrate



Cleaning in a Jameson Cell



Scavenging Residual Value Minerals



Overall Performance

Kvanefjeld Flotation Now Rigorously Tested



- **Primary aim achieved - 2 tonnes of rare earth mineral concentrate produced for refinery pilot plant**
- **After ramp-up the circuit was recovering ~80% of the rare earths**
- **Good circuit operability**
- **Rare earth mineral concentrate will be used for further EURARE pilot plant operations**
 - Refinery Pilot Plant at Pori, Finland September 2015

About the EURARE Program

GMEL Is One Of The Participating Mining Companies

