

ASX: AZS

13 JULY 2015

AIRBORNE GEOPHYSICAL SURVEY COMPLETED AT PROMONTORIO

- Airborne magnetic, radiometric and electromagnetic geophysical surveying program completed
- Data processing and interpretation in progress

Azure Minerals Limited (ASX: AZS) (“Azure” or “the Company”) is pleased to announce that the first phase of airborne geophysical surveying program at Promontorio has been completed. This program is part of the Earn-In and Joint Venture Agreement (“the Agreement”) with Kennecott Exploration Mexico S.A. de C. V. (“Kennecott”), part of the Rio Tinto Group.

The helicopter-borne survey was designed to look beneath post-mineral volcanic rocks that cover most of the project area and to detect geophysical signatures indicative of large copper systems and near-surface epithermal and massive sulphide mineralisation hosted in the basement rocks.

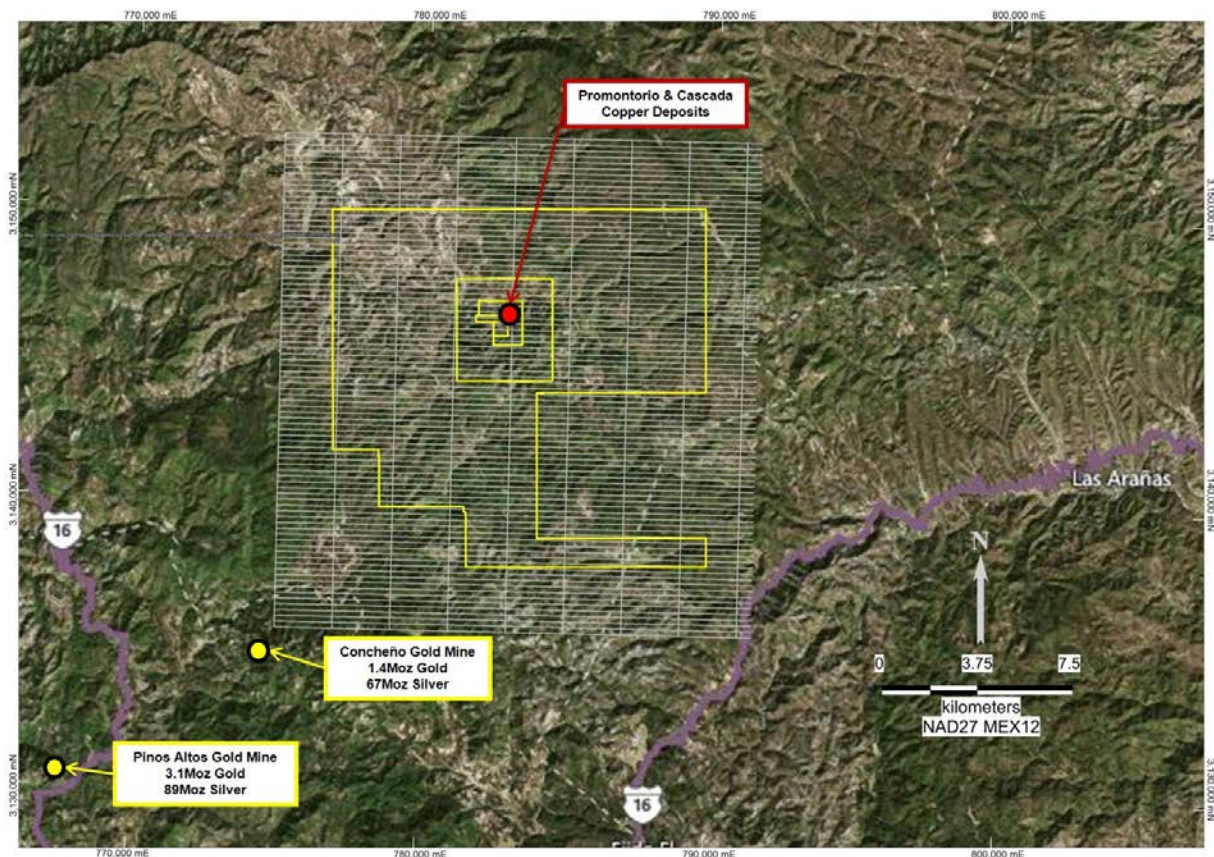


Figure 1: Area of airborne geophysical survey over Promontorio project area

The survey was carried out by independent geophysical contractor MPX Geophysics Ltd of Ontario, Canada. Detailed processing and interpretation of the data is currently being undertaken.

Several different styles of precious and base metal mineralisation have previously been identified at Promontorio, including high sulphidation epithermal, hydrothermal breccia and porphyry-hosted. Potential size of mineralisation ranges from large, bulk-tonnage resources to more modest-sized, high grade bodies, which bodes well for large scale, long-life mining operations.

Azure will release further exploration results to the market as they become available.



Figure 2: Helicopter towing Hummingbird Electromagnetic Sensor at Promontorio

-ENDS-

For further information, please contact:

Tony Rovira
Managing Director
Azure Minerals Limited
Ph: +61 8 9481 2555

Media & Investor Relations
Rupert Dearden
Citadel-MAGNUS
Ph:+61 8 6160 4903
Mob: +61 422 209 889

or visit www.azureminerals.com.au