



**ASX ANNOUNCEMENT**

**30 SEPTEMBER 2015**

**PRESENTATION AT RIU RESOURCES  
ROUND-UP CONFERENCE IN MELBOURNE**

**Apollo Minerals Ltd (ASX: AON)** provides a presentation given by General Manager Exploration, Derek Pang at the RIU Resources Round-up conference on Wednesday 30 September 2015. The presentation outlines the Company's projects with an emphasis on the exploration work programme being conducted on Apollo's 70% owned Fraser Range JV project.

**FOR FURTHER INFORMATION CONTACT:**

Guy Robertson  
Company Secretary  
Apollo Minerals Limited  
Email: [info@apollominerals.com.au](mailto:info@apollominerals.com.au)  
Tel: +61 2 9078 7665

**COMPETENT PERSON DECLARATION**

*The information in this Presentation that relates to Exploration Results is based on information compiled by Mr Derek Pang who is a member of the Australasian Institute of Mining and Metallurgy. Derek is a full time employee of Apollo Minerals Ltd. Derek has sufficient experience which is relevant to the style of mineralisation and type of deposit under consideration and to the activity being undertaken to qualify as a Competent Person as defined in the 2012 Edition of the 'Australasian Code for Reporting of Exploration Results, Mineral Resources and Ore Reserves'. Derek consents to the inclusion in the report of the matters based on their information in the form and context in which it appears.*

*Derek and the company confirm that they are not aware of any new information or data that materially affects the information included in the original market announcements. The company confirms that the form and context in which the Competent Person's findings are presented have not been materially modified from the original market announcement. Exploration results from the Fraser Range project in 2014 were conducted by Enterprise Metals Ltd (ASX: ENT)*

*Full details of the results are set out in Apollo's ASX release dated 23 March 2015 "New Nickel Sulphide System Confirmed at Fraser Range Project"*



# Mission

Explore, Discover and  
Develop world class  
mines



Deliver above average  
returns to investors



.....exploring world class provinces in Australia

# Exploration Business

High Risk



e.g. 2012  
Sirius exploration  
value <\$10M

High Rewards



e.g. 2012  
Sirius mine development  
value >\$1B



# Apollo Minerals

Key to discovery



Right  
projects

Expertise

Funding  
Ability

# Highly prospective locations



# Apollo Team

## Directors



### Richard Shemesian (Chairman)

- Investment banker and lawyer with >20 years experience in exploration, corporate strategy and management
- Involved in 2 successful ASX takeovers valued >\$430m
- Originated over >\$150m in mining financing
- Strategic partnerships and investments from multi-nationals CITIC, GIC (Singapore) Jindal Steel & HPX



### Eric Finlayson (Director)

- Over 30 years international experience in mining and exploration
- Previously Global Head of Exploration for Rio Tinto
- HPX senior adviser



### Tony Ho (Director)

- Chartered Accountant with over 40 years experience including various public company boards

## Management



### Derek Pang (Exploration Manager)

- Geologist with 20 years exploration experience in Australia and abroad focusing on base metals
- Previously with Blackthorn Resources, CRA Exploration and Ashton Mining



### Tim Craske (Geologist, Advisor)

- Geologist with >30 years experience throughout Australia
- Key role in the discovery of Ernest Henry Cu-Au, Nebo, Babel and the Nova nickel deposits
- Ex Sirius Resources, WMC, Vale and Iluka



### Chris Anderson (Geophysicist)

- Geophysicist with >35 years experience in Australia and abroad
- Instrumental in the discovery of the Carrapateena IOCG deposit
- Ex Placer Pacific



Carrapeteena  
2007



Ernest Henry  
1991



Fraser Range  
?

# Funding track record



\$8M

2014-2015

Capital raisings  
and JV agreements

Sufficient funding for initial  
exploration phase at Fraser Range



# Exploration Approach



Team of  
discoverers



Research & review  
targets



Exploration  
targeting



Drill targets



Discovery

**Proven methods:**

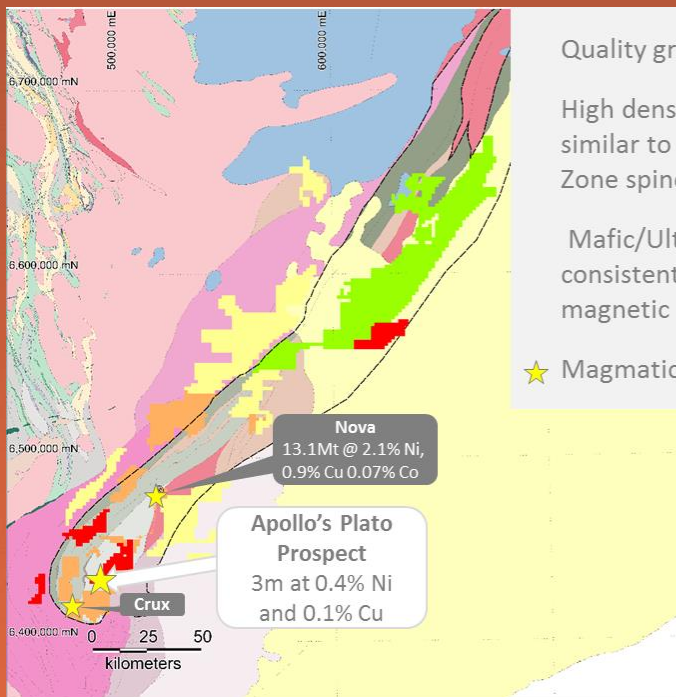
- Field work
- Soil geo-chemistry
- Ground EM
- Downhole EM

# Fraser Range

WORLD CLASS NICKEL BELT



Fr  
Fraser  
Range



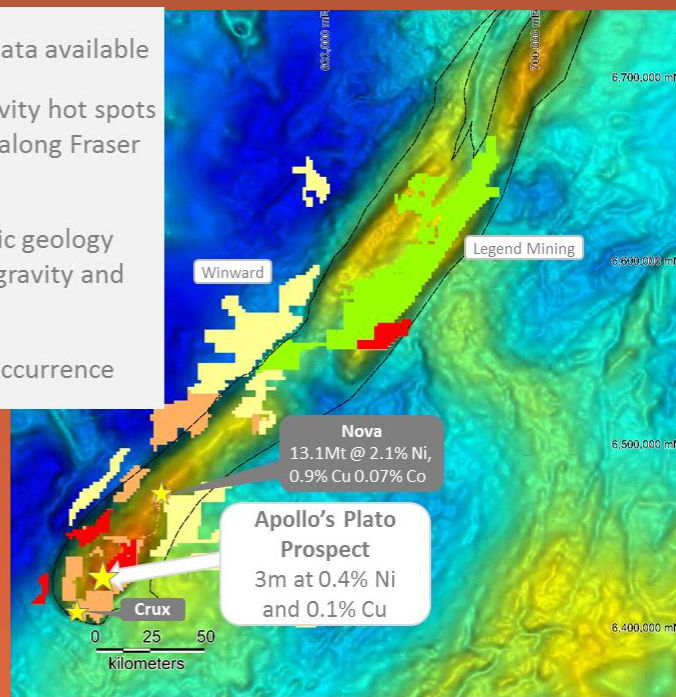
GEOLOGY

Quality gravity data available

High density gravity hot spots similar to Nova along Fraser Zone spine

Mafic/Ultramafic geology consistent with gravity and magnetic data

★ Magmatic Ni-S occurrence

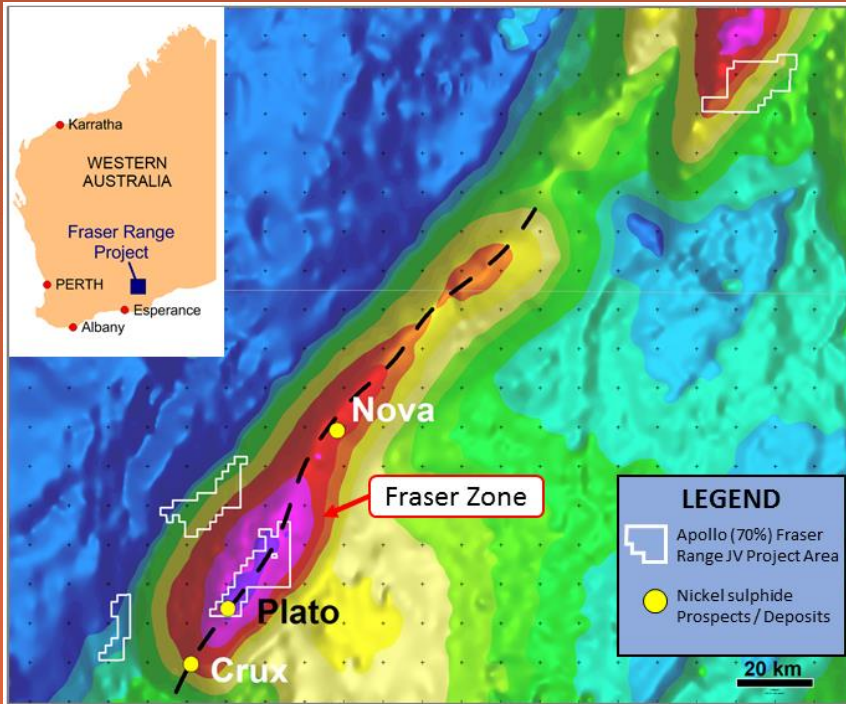


GRAVITY

# Fraser Range



## BEST ADDRESS ALONG HIGH DENSITY RIDGE



## LOCATION

- Apollo project situated on main **Fraser Zone** – mafic complex
- Analogous to the Thompson Ni belt, which typically host deposits in clusters or camps
- FZ has potential to host multiple Ni-Cu sulphide deposits
- Apollo's Plato prospect has drill intersections = 4,000ppm Ni
- Sulphides confirmed as primary magmatic nickel sulphides
- Tenement area ~660km<sup>2</sup>

The Fraser Zone is host to Nova Ni-Cu mine and Crux Ni prospect  
Nova is 1<sup>st</sup> major Ni discovery in the Fraser Zone

# Fraser Range

## PREVIOUS EXPLORATION RESULTS



Fr  
Fraser  
Range



**Spot Xrf results**  
up to 5.5% Ni

### **2014 Exploration:**

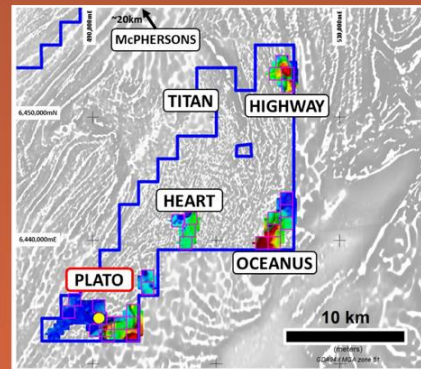
- Fixed loop EM (area covered <10%) and IP
- 12 holes drilled 3,800 metres
- Only target area drilled – Plato

### **First drill results:**

- Plato drill hole 3 intersect Ni Sulphides
- Assay results up to 0.4% Ni

### **Intersections of highly anomalous nickel:**

- 62m at 2,000 ppm Ni and 600 ppm Cu from 208m
- 63m at 1,300 ppm Ni from 271m
- 20m at 1,500 ppm Ni from 87m



**Nickel targets**  
Fixed loop EM

*“Plato rocks are of the same Fraser Main Gabbros as Nova and Crux”*

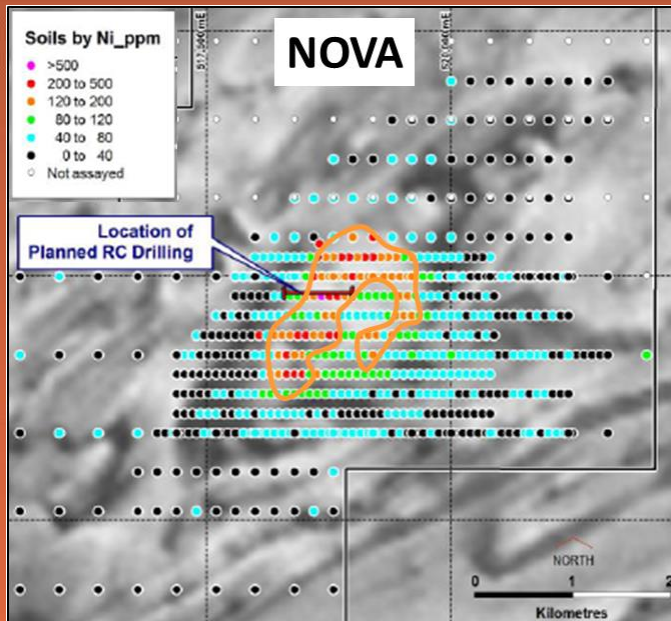
CSA GLOBAL, INDEPENDENT MINING CONSULTANTS

# Fraser Range

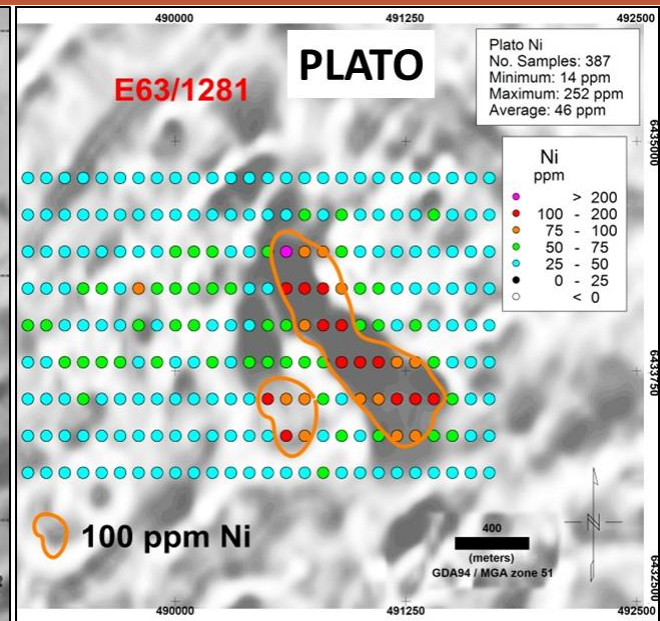


## PLATO SURFACE GEOCHEMISTRY

Surface geochemical anomalism at Plato is comparable to pre-discovery responses at Nova



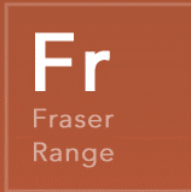
Source: SIR dated 6/12/2011



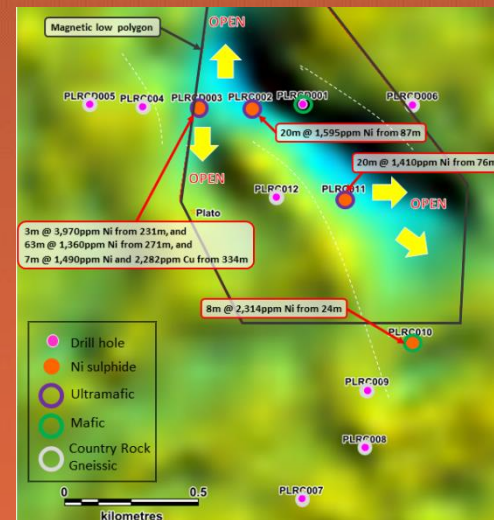
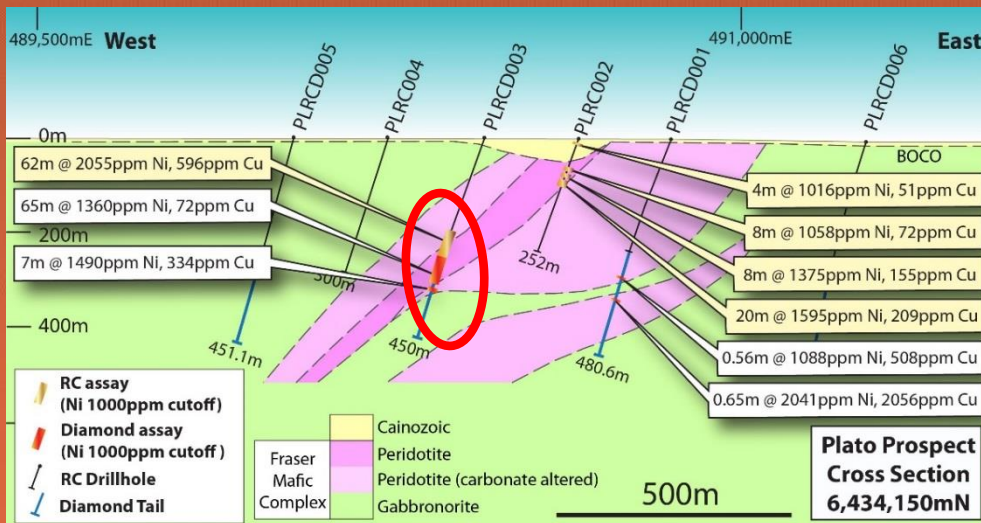
Source: ENT dated 30/10/2013

# Fraser Range

## PLATO PROSPECT DRILLING



Plato drilling confirmed the potential for high grade, massive nickel sulphide mineralisation

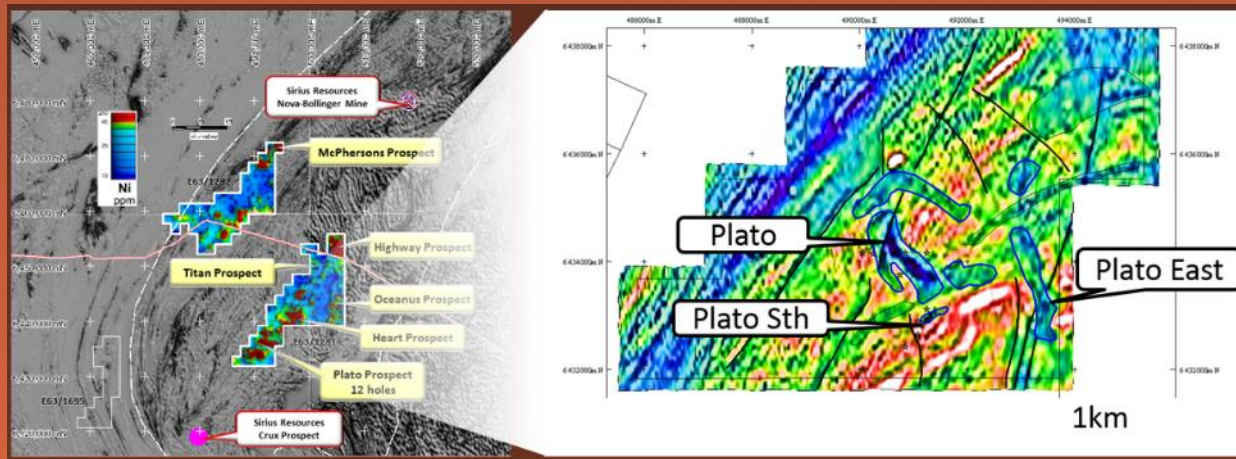


Full results set out in ASX: AON announcement dated 23 March 2015

Plato and Plato South drill hole location & target vectors

# Fraser Range

## PLATO PROSPECT POTENTIAL



Multiple untested targets

Highly anomalous Ni geochem

Further EM targets identified at Plato

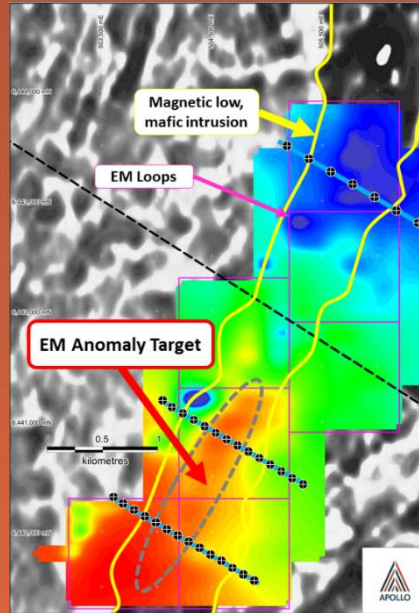
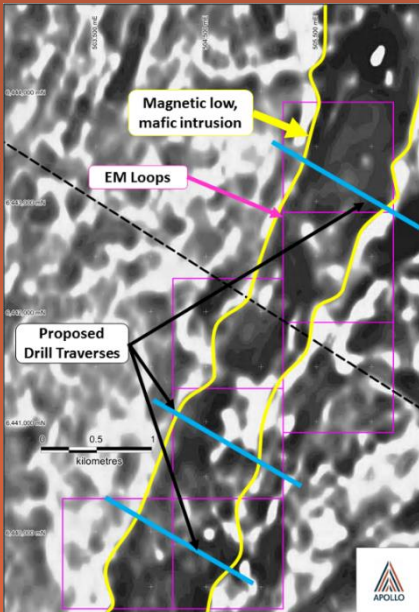
High potential to discover source of nickel system

Further target areas identified at Oceanus, Titan, Heart and Highway

Apollo now identifying major targets: Geochem + Conductors in the 'right' rocks

# Fraser Range

## OCEANUS PROSPECT



Magnetic low indicates similar ultramafic rock (eg Plato, Crux)

Fixed loop defined EM targets associated with basement weathering or palaeochannel

EM plate conductor correlates with mag. low possibly reflecting deep weathering above ultramafic

Drilling proposed along traverses

\$150K WA Govt funding granted for drilling 2015

Multi-staged exploration programme includes:

- Ground based moving loop EM in progress
- Shallow grid/traverse drilling planned
- Follow up deep RC/DDH drilling of confirmed targets planned



# Fraser Range



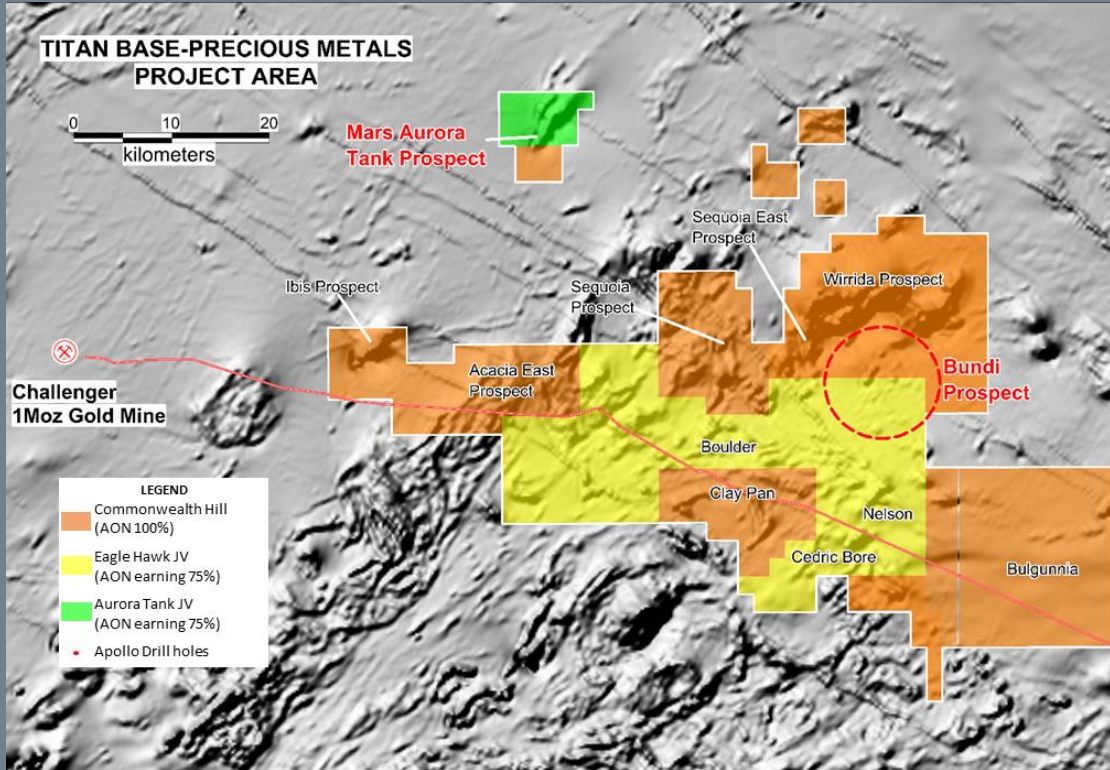
**Fr**  
Fraser  
Range

## NOVA – PLATO/OCEANUS COMPARISON

Prospect	Nova	Plato	Oceanus
Geology (Mag Low) – mafic/ultramafic units	✓	✓	✓
Structural Setting – high density zone	✓ along the 'spine'	✓ along the 'spine'	✓
Ni-Cu-Co Geochem	✓	✓	✓
FLEM Survey Targets	✓	✓	✓
MLEM Survey Targets	✓	To be tested	✓
Initial drilling results <i>(Source: ASX: SIR 10/5/2012 and AON 23/3/2015)</i>	2m @ 0.58% Ni & 0.01% Cu –SFRA494 4m @ 0.41% Ni & 0.01% Cu –SFRA496 4m @ 0.50% Ni & 0.2% Cu –SFRA4507	4m @ 0.39% Ni & 0.11 Cu and 3m @ 0.37% Ni & 0.15 Cu –PLRC003 1m @ 0.20% Ni & 0.21% Cu –PLRC001	To be tested
Magmatic Ni Sulphides	✓	✓	To be tested
Deep Drilling	✓	Further testing required	To be tested
Discovery	✓	???	???

# South Australia

## GAWLER CRATON



World class  
Gawler  
Craton

- Olympic Dam
- Prom Hill
- Carrapateena
- Challenger Gold

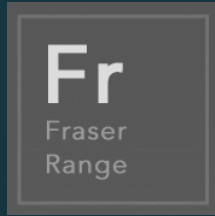
Strategically  
located  
tenements

~2,000km<sup>2</sup>  
project area

Near world  
class mines  
and majors  
actively  
exploring

# Strategy

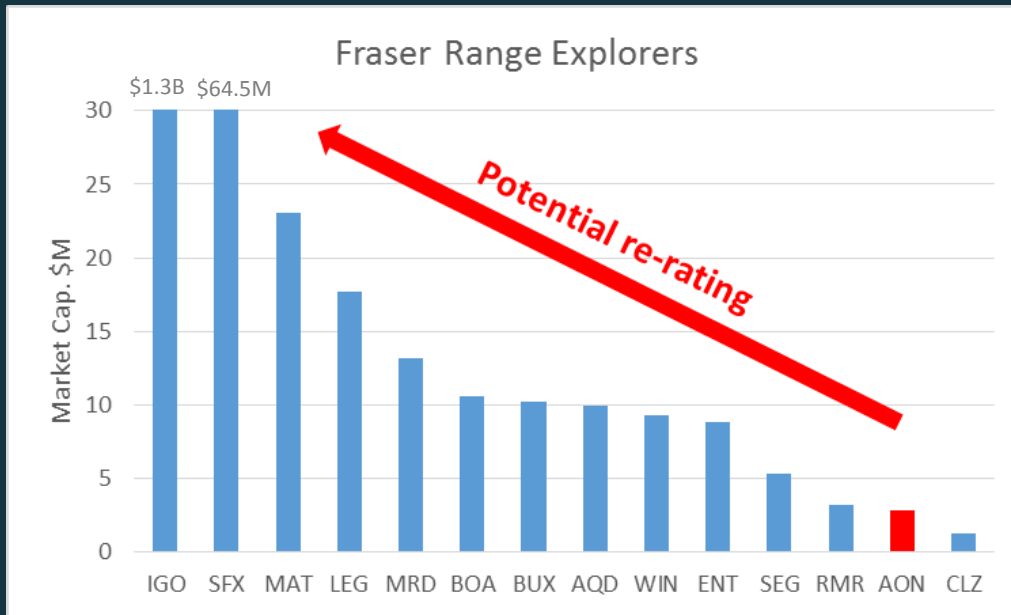
## FRASER RANGE, WA



- Exploration Focus – Fraser Range hot spot
- Nova discovery template
- Learn from neighbouring explorers
- Next 12 months:
  - Ground EM
  - Data processing and interpretation
  - Identify EM conductors and plan drilling
  - Multi phased drilling programme by aircore/RAB, RC and diamond core
- EIS funding grant for drilling – \$150,000



# Discovery and value potential



Projects in geological hotspots

Proven discovery approach

Utilising latest technology

Team of discoverers

Major upside

# Disclaimer

This presentation has been prepared by Apollo Minerals Limited (“Apollo” or the “Company”). It should not be considered as an offer or invitation to subscribe for, or purchase any, securities in the Company or as an inducement to make an offer or invitation with respect to those securities. No agreement to subscribe for securities in the Company will be entered into on the basis of this presentation.

This presentation contains forecasts, projections and forward-looking information. Such forecasts, projections and information are not a guarantee of future performance and involve unknown risks and uncertainties, many of which are out of Apollo’s control. Actual results and developments will almost certainly differ materially from those expressed or implied. Apollo has not audited or investigated the accuracy or completeness of the information, statements and opinions contained in this presentation. To the maximum extent permitted by applicable laws, Apollo makes no representation and can give no assurance, guarantee or warranty, expressed or implied, as to, and takes no responsibility and assumes no liability for:

- the authenticity, validity, accuracy, suitability or completeness of, or any errors in or omission from, any information, statement or opinion contained in this presentation, and
- without prejudice to the generality of the foregoing, the achievement or accuracy of any forecasts, projections or other forward-looking information contained or referred to in this presentation.

Throughout this presentation all figures are quoted in A\$ dollars unless otherwise stated. You should not act in reliance on this presentation material. This overview of the Company does not purport to be all inclusive or to contain all information which its recipients may require in order to make an informed assessment of Apollo’s prospects. You should conduct your own investigation and perform your own analysis in order to satisfy yourself as to the accuracy and completeness of the information, statements and opinions contained in this presentation before making any investment decision.

## COMPETENT PERSON DECLARATION

*The information in this Presentation that relates to Exploration Results is based on information compiled by Mr Derek Pang who is a member of the Australasian Institute of Mining and Metallurgy. Derek is a full time employee of Apollo Minerals Ltd. Derek has sufficient experience which is relevant to the style of mineralisation and type of deposit under consideration and to the activity being undertaken to qualify as a Competent Person as defined in the 2012 Edition of the ‘Australasian Code for Reporting of Exploration Results, Mineral Resources and Ore Reserves’. Derek consents to the inclusion in the report of the matters based on their information in the form and context in which it appears.*

*Derek and the company confirm that they are not aware of any new information or data that materially affects the information included in the original market announcements. The company confirms that the form and context in which the Competent Person’s findings are presented have not been materially modified from the original market announcement. Exploration results from the Fraser Range project in 2014 were conducted by Enterprise Metals Ltd (ASX: ENT)*

*Full details of the results are set out in Apollo’s ASX release dated 23 March 2015 “New Nickel Sulphide System Confirmed at Fraser Range Project”*