

ADMEDUS INVESTOR PRESENTATION

October, 2015

DISCLAIMER

This presentation is the property of Admedus Ltd (“Admedus”). This presentation is not and does not constitute an offer, invitation or recommendation to subscribe for, or purchase any security and neither this presentation nor anything contained in it shall form the basis of any contract or commitment.

This presentation does not constitute an offer or invitation in any jurisdiction anywhere, or to any person to whom, such an offer would be unlawful. This presentation is not intended as an offer, invitation, solicitation or recommendation with respect to the purchase or sale of any security in the United States or to any person to whom it is unlawful to make such an offer or solicitation. The securities in the offering have not been, and will not be registered under the US Securities Act.

Reliance should not be placed on the information or opinions contained in this presentation. This presentation does not take into consideration the investment objectives, financial situation or particular needs of any particular investor. Any decision to purchase or subscribe for securities in Admedus must be made solely on the basis of the information contained in the public domain and if necessary after seeking appropriate financial advice.

No representation or warranty, express or implied, is made as to the fairness, accuracy, completeness or correctness of the information, opinions and conclusions contained in this presentation. To the maximum extent permitted by law, Admedus and its affiliates and related bodies corporate, and their respective officers, directors, employees and agents disclaim any liability (including, without limitation, any liabilities arising from fault or negligence) for any loss arising from any use of this presentation (or its content) or otherwise arising in connection with it.

Admedus’ forward-looking statements, intentions, forecasts, prospects, returns, expectations, statements in relation to future matters or other forward looking statement contained in this presentation may involve significant elements of subjective judgement and assumptions as to future events which may or may not be correct. There are usually differences between forecast and actual results because events and actual circumstances frequently do not occur as forecast and these differences may be material. They are based on a number of estimates, assumptions that are subject to business, scientific, economic and competitive uncertainties and contingencies, with respect to future business decisions, which are subject to change and, in many cases, are outside the control of Admedus and its directors. Neither Admedus nor its directors give any assurance that the forecast performance in the forecasts or any forward-looking statement contained in this presentation will be achieved.

ADMEDUS PRESENTATION OVERVIEW

- Admedus Overview and 4C Highlights
- ADAPT[®] Regenerative Tissue
- Immunotherapies
- Company Milestones and News Flow
- Q & A

CORPORATE OVERVIEW

- Fully integrated Specialist Healthcare Company with global footprint
- Leveraging two proprietary and differentiated platform technologies
 - ADAPT® – tissue engineering for regenerative medicine
 - Therapeutic vaccines and immunotherapies for infectious disease and oncology
- Significant value and springboard for growth built over the past 2 years
 - Rollout of lead ADAPT product, CardioCel® ongoing-used in 110 centers globally inc US & EU
 - Initially targeting the significant cardiovascular repair market
 - Cardiocel launch de-risks underlying ADAPT platform
 - Now Expanding Regenerative pipeline into additional targets
 - Key value inflection points for immunotherapy programs in 2015 / 2016
- Strong IP position across both platforms underpins broad pipeline
- Experienced management team

QUARTERLY HIGHLIGHTS (4C)

CARDIOCEL® GROWS STRONGLY; HSV-2 PHASE II TRIAL NEARS COMPLETION

- Sales for the quarter of \$3.03M, up 42.5% from the prior year period
 - Growth reflects CardioCel®'s increasing global availability and traction
 - CardioCel® now in 110 centres globally (30 June 2015: 90 centres)
- Cash balance at 30 September 2015 of \$16.7M
- Initiated CardioCel® aortic heart valve reconstruction post-market clinical study
- Initiated collaboration on stem cell delivery with ADAPT tissue
- HSV-2 Phase II trial nearing completion; interim results due end of this calendar year
- Completed manufacturing of the HPV therapeutic vaccine
- Admedus Vaccines rebrands as Admedus Immunotherapies

Post period

- \$750K from R&D Tax Incentive received for immunotherapy programs in October 2015; additional R&D Tax Incentives expected

ADAPT[®] Regenerative Tissue

ADAPT®

A PLATFORM TECHNOLOGY WITH BROAD APPLICATION IN REGENERATIVE MEDICINE

- The ADAPT® tissue benefits are:

Safe	Durable	Remodels	Easy to use
<ul style="list-style-type: none"> • Bio-compatible • Haemocompatible • Maximum haemostasis 	<ul style="list-style-type: none"> • Strong with natural flexibility and elasticity • No calcification 	<ul style="list-style-type: none"> • Promotes site specific tissue regrowth and regeneration • Prevents calcification • Retains tensile strength & elasticity 	<ul style="list-style-type: none"> • Off the shelf • No specific preparation • No special or technical training required for use

- CardioCel® is the first commercialised product from ADAPT®, de-risking the ADAPT IP
- CardioCel®'s mission - becoming the product of choice for surgeons in cardiovascular repairs including heart valve reconstructions
- IP strong – core patents out to beyond 2030
- Admedus building an ADAPT® regenerative tissue portfolio

ADAPT®

REGENERATIVE TISSUE PRODUCT PORTFOLIO

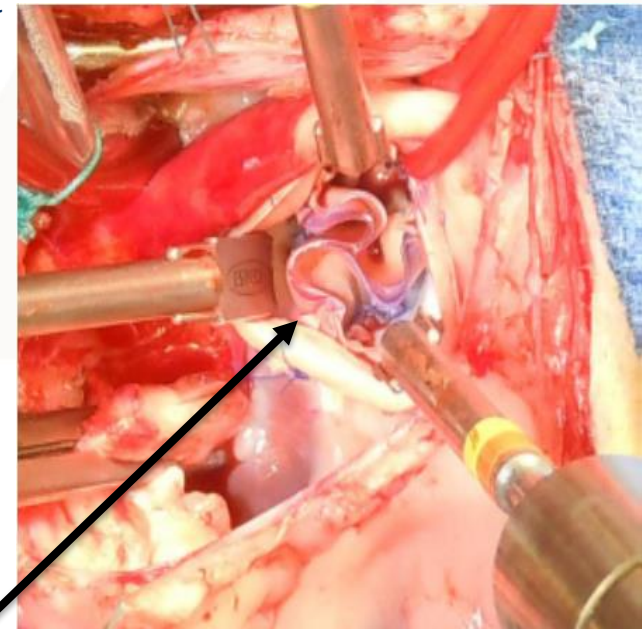
CardioCel®	Congenital Heart Disease (CHD)	Launched in EU & US
Cardiovascular Applications	Heart valve repairs & reconstructions*	On market in US & Asia
Vascular tissue	Carotid Endarterectomy (CEA)	On market in 2016
Dura mater repair	Spinal and cranial repair	File 2017
Whole vascular tissue	CABG, AV fistula	File 2018
Stem Cell or stem cell factor delivery	ADAPT tissue with stem cells	File/partner 2019
Abdominal surgery	Hernia repairs	File 2020

* Admedus is currently undertaking a supporting aortic valve reconstruction clinical study with leading global heart centres and surgeons
As a platform technology, ADAPT tissue has potential in additional applications and products

CARDIOCEL AS A HEART VALVE TREATMENT: ACCESSING A \$2BN OPPORTUNITY

- Large aortic valve market – replacement market estimated \$2Bn
- “Repair vs Replacement?” - An ongoing debate
 - Growing TAVR valve market competing with established bio-prosthetic replacement valves
 - There are known issues with bio- prosthetic, TAVR and mechanical valves
 - Surgeons have been looking for better tissue to repair and reconstruct valves
- CardioCel scaffold uniquely positioned for repairing / reconstructing valves
- Working with KOLs has generated strong preclinical data which highlights:
 - Durability and anti-calcification properties; facilitates host tissue remodelling
 - Provides a better functioning valve with better haemodynamics; opportunity to regain “native” valve functionality
 - Ability to repair earlier in the valve disease process with CardioCel
 - Bodes well for longer term better patient outcomes; potentially avoids the need for replacement valves
 - No need for anticoagulants (blood thinners)
- CardioCel aortic valve clinical study initiated with leading heart centres

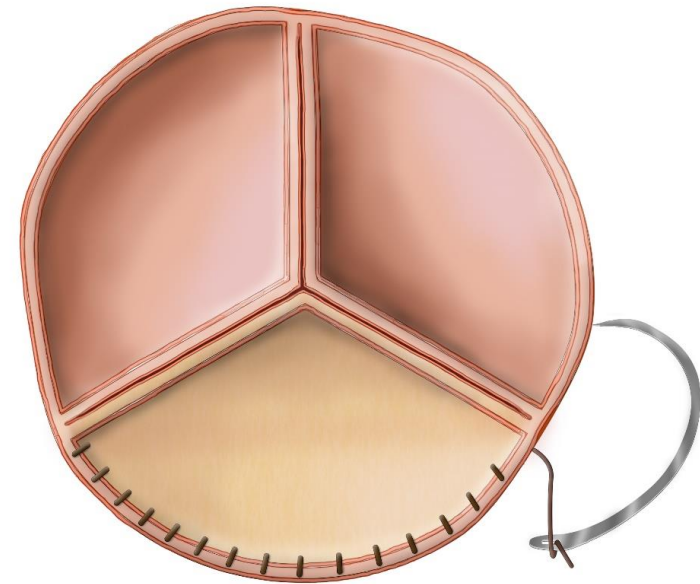
“The results from this study are some of the best results that we’ve seen in this model” - Professor Bart Meuris



Aortic tri-leaflet valve reconstruction with CardioCel®

AORTIC VALVE CLINICAL STUDY

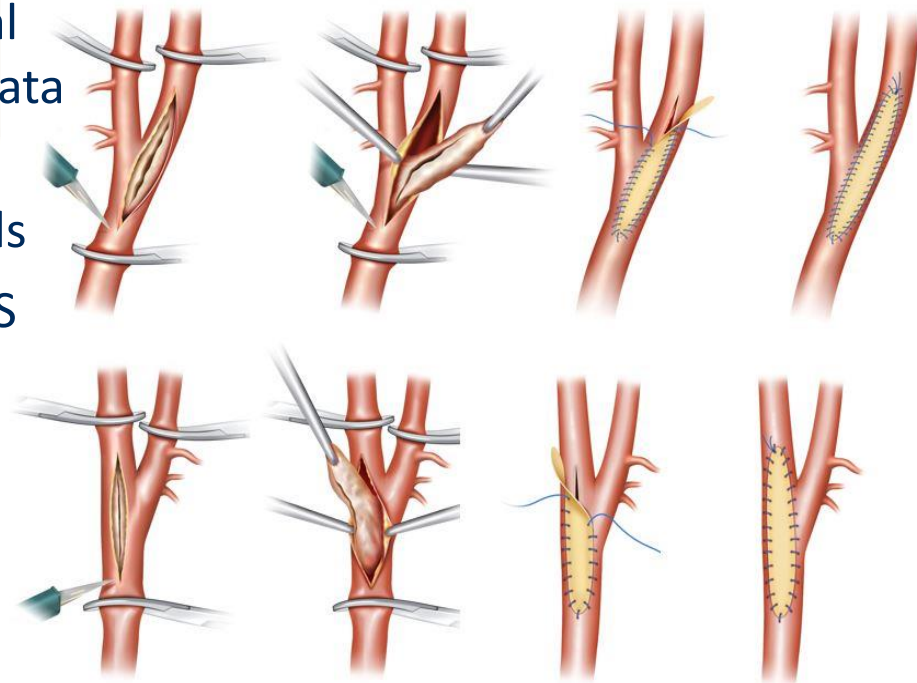
- Currently enrolling aortic valve reconstruction study
 - Reconstructing the whole valve instead of replacement with a bio-prosthetic valve
 - 4 leading heart centres enrolling 80 adult patients
 - Supporting CardioCel use in valve reconstructions instead of bio-prosthetic
 - Looking at overall patient valve performance
 - To show patient benefits of full valve reconstruction over short-term options of bio-prosthetics
 - Overall benefit of the patient & better haemodynamics
 - Complimented with autologous repair to form 'native' valve
- Further news flow near term with clinical reviews at 6, 12 and 24 months post-surgery



ADAPT® FOR VASCULAR REPAIRS

LAUNCHING OF NEW PRODUCT RANGE

- Admedus looking to launch vascular focused product range
- Vascular tissue being used in pilot clinical programs at key US centres for further data and rollout in 2016
- Leverage off existing regulatory approvals
- 180,000 procedures per annum in the US
- Focused data in 2016 on Carotid Endarterectomy (CEA) procedures
- Broader use across further surgeries
 - Coronary Revascularisation
 - Endo AAA
 - Open AAA

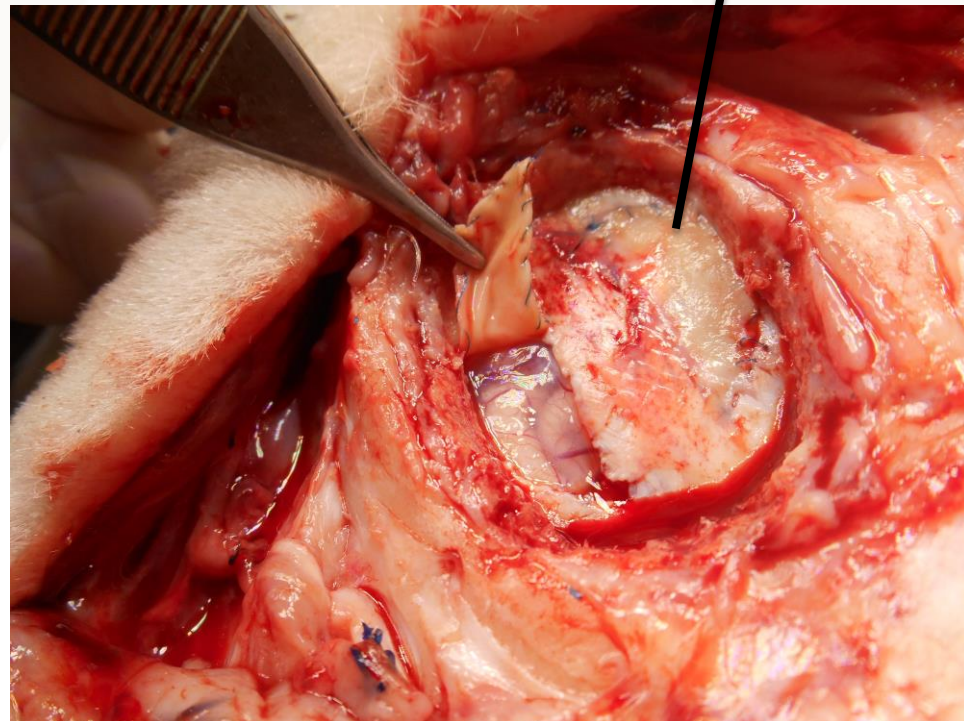


ADAPT[®] TISSUE FOR DURA MATER

DEVELOPING A PRODUCT FOR DURA MATER REPAIRS

- US market around 200,000 procedures per annum
- Initial study shows:
 - No post-op leakage
 - No post-op infection
 - Remodelling and endothelialisation within one month
 - No adhesion to brain surface
- Entering a 2nd study in 2016
 - Study data intended to aid in US market filing

ADAPT[®] tissue



Immunotherapies – Therapeutic Vaccines for Infectious Disease and Oncology

IMMUNOTHERAPIES

LEVERAGING A PATENTED DNA PLATFORM TECHNOLOGY TO DELIVER NOVEL IMMUNOTHERAPIES

- Based on technology developed by Professor Ian Frazer
 - Best known for his work in HPV leading to Gardasil® and Cervarix®
- Uses a combination of:
 - Intra-dermal delivery
 - Proprietary codon optimisation Coricode®
 - Ubiquitin added in the codon to help stimulate the T-cell response Corimmune®
- Targeting therapeutic vaccines for infectious disease and oncology
- Two lead clinical programs – HSV-2 & HPV
- 7 patent families – 6 US granted



HERPES SIMPLEX VIRUS-2 (HSV-2)

TACKLING AN UNMET MEDICAL NEED

- HSV-2 commonly causes genital herpes
- 1 in 6 people aged between 14 and 49 in the US estimated to be HSV positive
- No cure available
- Addressable market estimated at \$6bn+
- Preclinical – total HSV-2 viral clearance
 - Prevented establishment of latency reservoirs
- Phase I – consistent with preclinical data
 - Dose ranging study in sera-negative healthy people
 - 3 vaccinations with 3 weeks between
 - Doses 10mcg, 30mcg, 100mcg, 300mcg and 1000mcg
- Results showed:
 - Phase I safe (primary endpoint) – no safety issues
 - 19 of 20 patients showed T-cell response
 - Non-response in lower dose
 - Also strong local (DTH) response



HSV-2 VACCINE

KEY VALUE INFLECTION POINT DURING 2015

- Phase II
 - Currently recruiting – recruitment nearly complete
 - Initial study participants received vaccine doses with no safety issues
- HSV-2 positive people
 - Two arms – 1000 mcg vs placebo 3:1 ratio
 - 20 patients per arm
 - 45 day pre-vaccination ‘baseline’ period
 - 3 injection regimen with 4 weeks between injections
 - Followed by 6 month booster
 - Looking at safety
 - Also viral load, viral shedding and viral flare frequency
- Anticipating interim results by year end 2015
 - Additional data expected in 2016



HUMAN PAPILLOMA VIRUS (HPV) VACCINE

DEVELOPING AN EFFECTIVE TREATMENT

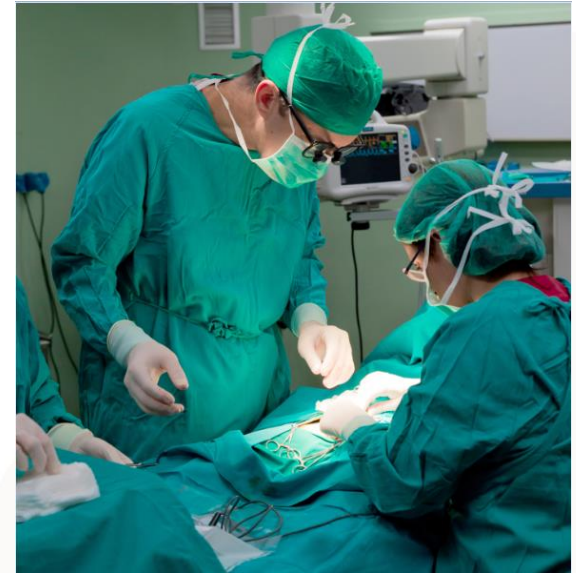
- HPV infection a direct cause of cervical cancer
- Despite availability of first generation HPV vaccines (Gardasil® and Cervarix®)
 - Low compliance; <35% vaccination completion rate in the US
 - Significant pool of people already HPV infected – vaccine ineffective
 - 14M new infections in the US per annum (CDC)
- Estimated >\$1bn+ market potential for therapeutic vaccine
- Targeting therapeutic use against HPV – E6 & E7
- Strong preclinical data
 - HPV viral clearance
 - 100% survival in TC-1 model (tumour transfer model)
 - 87.5% had no tumour 50 days post treatment
 - Prevents disease progression in multiple HPV tumour models
- Entering Phase Ib in 2016

Company Milestones And News flow

EXPECTED 12 MONTH NEWS-FLOW

ADAPT® & CardioCel®

- Continued growing sales
- Increase number of centres using CardioCel globally
- Additional Asian market approvals for CardioCel®
- European indication expansion for valve repairs
- Additional approvals in the MENA region
- Launch of ADAPT vascular tissue product range
- Tri-leaflet Aortic Heart Valve reconstruction study updates and data
- Initiation of dura mater tissue study for regulatory submission
- Progression of CardioCel® with stem cells program
- Additional partnerships
- Initial CardioCel studies for the Chinese market approval



EXPECTED 12 MONTH NEWS-FLOW

Immunotherapies

- HSV-2 Phase II interim data end 2015
- Additional HSV-2 Phase II data in CY2016
- Complete preclinical HPV studies
- Initiation of Ian Frazer's next HPV product as a treatment against HPV and Cervical Cancer into Phase Ib CY2016



CORPORATE SUMMARY

- Building a Specialist Healthcare Company in global markets
- Developing two proprietary and differentiated platform technologies
 - ADAPT[®] – tissue engineering for regenerative medicine
 - Therapeutic vaccines and immunotherapies for infectious disease and oncology
- Significant value and springboard for growth built over the past 2 years
 - Rollout of lead ADAPT[®] product, CardioCel[®] ongoing-used in 110 centers globally inc US & EU
 - Initially targeting the significant cardiovascular repair market
- Strong growing revenue over the next 12 months
 - Cardiocel[®] launch de-risks underlying ADAPT[®] platform
 - Now Expanding Regenerative pipeline into additional targets
- Significant news flow over the next 12 months
 - Key value inflection points for immunotherapy programs in 2015 / 2016

Thank you

Twitter: @Admedus

Facebook:

www.facebook.com/pages/Admedus

www.admedus.com