



**Consistently
Delivering On
Commitments**

November 26, 2015

Innovation • Performance • Growth



Waihi Site Visit

Cautionary and Technical Statements

Cautionary Notes - Information Purposes Only

The information contained in this presentation is provided by OceanaGold Corporation ("OGC") for informational purposes only and does not constitute an offer to issue or arrange to issue, or the solicitation of an offer to issue, securities of OGC or other financial products. The information contained herein is not investment or financial product advice and has been prepared without taking into account the investment objectives, financial situation or particular needs of any particular person. The views, opinions and advice provided in this presentation reflect those of the individual presenters only. No representation or warranty, express or implied, is made as to the fairness, accuracy, completeness or correctness of the information, opinions and conclusion contained in this presentation. To the maximum extent permitted by law, none of OGC or any of its directors, officers, employees or agents accepts any liability, including, without limitation, any liability arising out of fault or negligence, for any loss arising from the use of the information contained in this presentation. Furthermore, this presentation does not constitute an offer of shares for sale in the United States or to any person that is, or is acting for the account or benefit of, any U.S. person (as defined in Regulation S under the United States Securities Act of 1933, as amended (the "Securities Act")) ("U.S. Person"), or in any other jurisdiction in which such an offer would be illegal. OGC's shares have not been and will not be registered under the Securities Act.

Cautionary Statement Concerning Forward Looking Information

Certain information contained in this presentation may be deemed "forward-looking" within the meaning of applicable securities laws. Forward-looking statements and information relate to future performance and reflect OGC's expectations regarding the generation of free cash flow, execution of business strategy, future growth, future production, estimated costs, results of operations, business prospects and opportunities of OGC and its related subsidiaries. Any statements that express or involve discussions with respect to predictions, expectations, beliefs, plans, projections, objectives, assumptions or future events or performance (often, but not always, using words or phrases such as "expects" or "does not expect", "is expected", "anticipates" or "does not anticipate", "plans", "estimates" or "intends", or stating that certain actions, events or results "may", "could", "would", "might" or "will" be taken, occur or be achieved) are not statements of historical fact and may be forward-looking statements. Forward-looking statements are subject to a variety of risks and uncertainties which could cause actual events or results to differ materially from those expressed in the forward-looking statements and information. They include, among others, the accuracy of mineral reserve and resource estimates and related assumptions, inherent operating risks, and those risk factors identified in OGC's most recent annual information forms prepared and filed with securities regulators which is available on SEDAR at www.sedar.com under OGC's name.

There are no assurances OGC can fulfil forward-looking statements and information. Such forward-looking statements and information are only predictions based on current information available to management of OGC as of the date that such predictions are made; actual events or results may differ materially as a result of risks facing OGC, some of which are beyond OGC's control. Although OGC believes that any forward-looking statements and information contained in this presentation are based on reasonable assumptions, readers cannot be assured that actual outcomes or results will be consistent with such statements. Accordingly, readers should not place undue reliance on forward-looking statements and information. OGC expressly disclaims any intention or obligation to update or revise any forward-looking statements and information, whether as a result of new information, events or otherwise, except as required by applicable securities laws. The information contained in this release is not investment or financial product advice.

Technical Disclosure

The Mineral Resources for Didipio were prepared by, or under the supervision of, J. G. Moore, whilst the Mineral Resources for Macraes and Reefton were prepared by S. Doyle. The Mineral Reserves for Didipio were prepared under the supervision of M. Holmes, while the Mineral Reserves for Macraes and Reefton were prepared by, or under the supervision of, K Madambi. The Mineral Resources and Reserves for Haile were prepared by, or under the supervision of, Joshua Snider, P.E., Erin Paterson, P.E., Lee "Pat" Gochnour, M.M.S.A., John Marek, P.E. and Carl Burkhalter, P.E. Each of the aforementioned persons is a "Qualified Person" for the purposes of NI 43-101. The Mineral Reserves and Resources for Waihi were prepared by, or under the supervision of, T. Maton, P. Church and D. Bertoldi. M. Holmes, S. Doyle, K. Madambi, J. G. Moore, T. Maton and P. Church are Members and Chartered professionals with the Australasian Institute of Mining and Metallurgy and each is a "qualified person" for the purposes of NI 43-101. D. Bertoldi is a fellow of the Australasian Institute of Mining and Metallurgy and is a "qualified person" for the purposes of NI 43-101. Messrs Holmes, Doyle, Madambi, Moore, Maton, Church and Bertoldi have sufficient experience, which is relevant to the style of mineralisation and type of deposits under consideration, and to the activities which they are undertaking, to qualify as Competent Persons as defined in the 2012 Edition of the "Australasian Code for Reporting of Exploration Results, Mineral Resources and Ore Reserves" ("JORC Code").

The resource estimates for the El Dorado property were prepared by Mr. Steven Ristorcelli, C.P.G., of Mine Development Associates, Reno, Nevada (who is an independent Qualified Person as defined in NI 43-101) and conforms to current CIM Standards on Mineral Resources and Reserves.

For further scientific and technical information (including disclosure regarding mineral resources and mineral reserves) relating to the Reefton Project, the Macraes Project, the Didipio Project, the Waihi Gold Operation and the Haile Gold Mine Project, please refer to the NI 43-101 compliant technical reports available at sedar.com under the Company's name. For further scientific and technical information (including disclosure regarding mineral resources and mineral reserves) relating to the El Dorado property, please refer to the reports publicly available on SEDAR (www.sedar.com) prepared for Pacific Rim Mining Corp.

General Presentation Notes

- All AISC and cash costs are net of by-product credits unless otherwise stated
- All financials are denominated in US Dollars unless otherwise stated

Waihi Gold Mine Overview

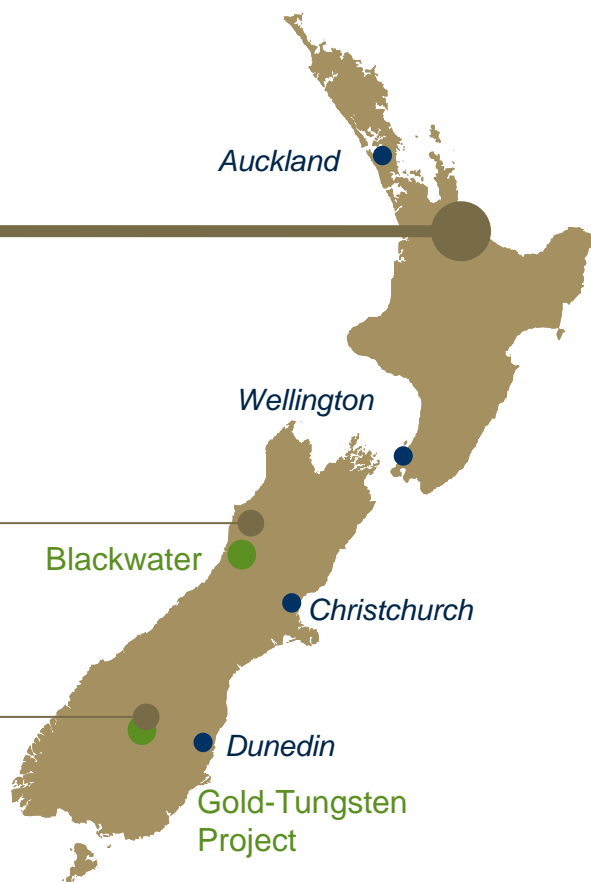
GOLD

UNDERGROUND

Waihi

Reefton

Macraes



Reserves and Resources⁽¹⁾

	Mt	g/t Au	Moz Au	g/t Ag	Moz Ag
P&P Reserves	1.5	6.33	0.31	24.0	1.17
M&I Resources	1.5	6.33	0.31	24.0	1.17
Inferred Resources	0.6	7.73	0.15	16.7	0.33

Avg. Unit Operating Costs (H2 2015)

Mining Costs	<i>NZD / t mined</i>	90 – 100
Processing Costs	<i>NZD / t milled</i>	35 – 38
Site G&A Costs	<i>NZD / t milled</i>	15 – 17

Capital Costs (H2 2015)

Capitalised Mining	<i>NZDm</i>	1 – 2
Sustaining	<i>NZDm</i>	4 – 5
Exploration	<i>NZDm</i>	5 – 6

1. M&I Resources are inclusive of reserves. Refer to Waihi 43-101 Technical Report dated 23 Nov 2015 at www.oceanagold.com

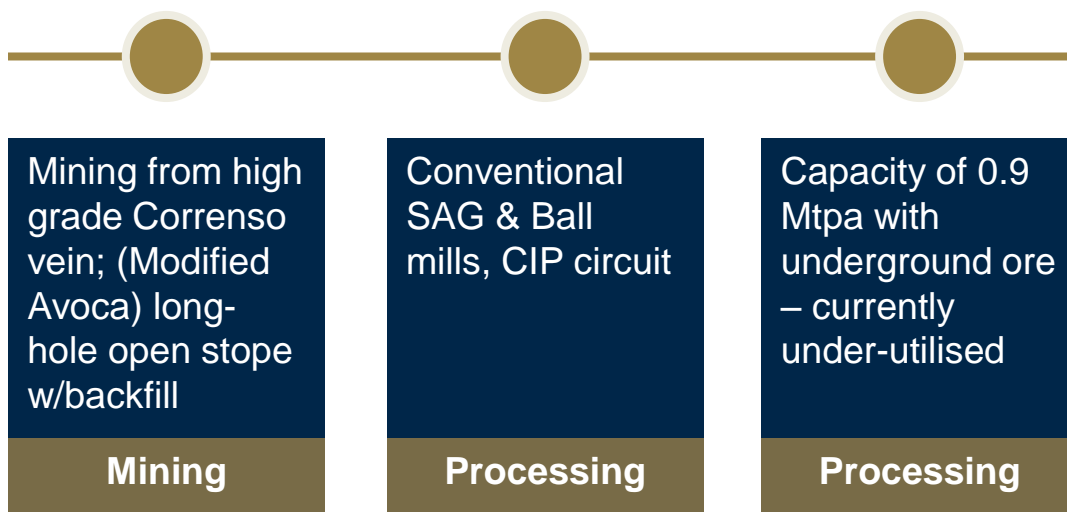
Waihi Operation

Waihi Operation Overview



Waihi Process Plant

Attributable to OGC		Guidance (H2 2015)	Q3 2015 ⁽¹⁾
Gold Production	oz	65,000 – 70,000	32,997
AISC	per oz sold	US\$650 – US\$680	US\$497
Cash Costs	per oz sold	US\$490 – US\$520	US\$393



1. Refer to the Q3 2015 MD&A for disclosures regarding accounting treatment of Waihi post transaction close, which took place on 30 Oct 2015

Workforce

Waihi Gold Employees/Workers

Underground	18
Open Pit	1
Processing	50
HSE	14
Community	4
Site Services	5
Admin/Commercial/HR	11
Exploration	8

Subtotal 111

Contractors Employees/Workers

Thiess (Underground)	95
Boart (Drilling)	34
Security	14
Various	35

Subtotal 178

TOTAL 289

Residential operation

Contract mining by Thiess (provide labour, some equipment) working 24/7 with 3 crews

Contract exploration drilling and security, working 24/7

Open pit operations suspended due to wall failure April 2015

Processing plant 24/7 operation with 4 crews

Management Team

Bernie O'Leary
General Manager



- Over 30 years industry experience
- 6 years as GM at Macraes operation
- Mining engineer with extensive open pit and underground experience
- Worked extensively in Australia, North and South America and New Zealand
- Track record of delivering on operational performance

Lorraine Torckler
Exploration & Geology Manager



- 37 years experience in the mining industry primarily in epithermal vein deposits
- Graduated MSc Geology from Auckland University
- Experience in gold exploration across diverse geological settings
- Intimately involved in the discovery, feasibility and mining of the Favona, Moonlight, Trio and Correnso deposits

Dino Bertoldi
Processing Manager



- Fellow of the AusIMM and member of the SME
- 30 years processing experience
- Worked in Australia, Turkey, Ghana, PNG, Malaysia & New Zealand

Kevin Storer
Site Services Manager



- 25 years experience within the mining industry
- Business Management Degree Monash Mt Eliza
- Boddington Gold Mine Contracts Manager
- Golden Cross Mine Project Cost Controller/Contracts Manager
- Martha Mine Contracts/Supply Projects Manager

Kerry Watson
HSEC Manager



- Diverse work background including Environmental Manager for one of NZ's prominent electricity generators, a Detective Constable for NZ Police and a secondary school biology teacher.
- Significant experience in environmental management, monitoring, regulatory processes and community engagement

Charlie Gawth
Underground Manager



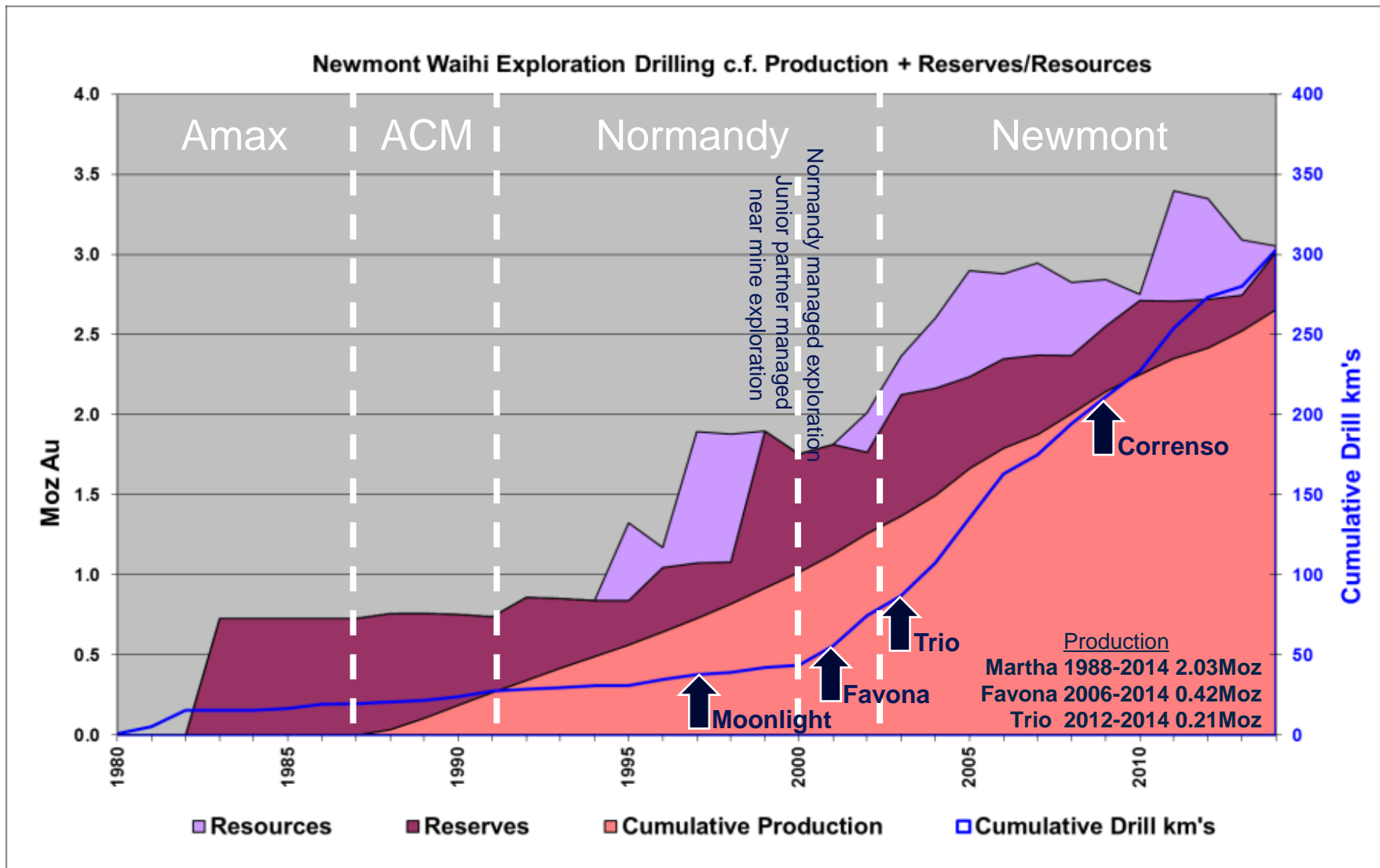
- Bachelor of Mining Engineering
- Over 12 years mining industry experience
- Experience working in Zimbabwe, Australia & New Zealand

Jill Mason
Human Resources Advisor



- Over 20 years experience in generalist human resource roles
- NWG 10 months
- Prior work experience with SGS NZ, Restaurant Brands Ltd & Fletcher Challenge Group

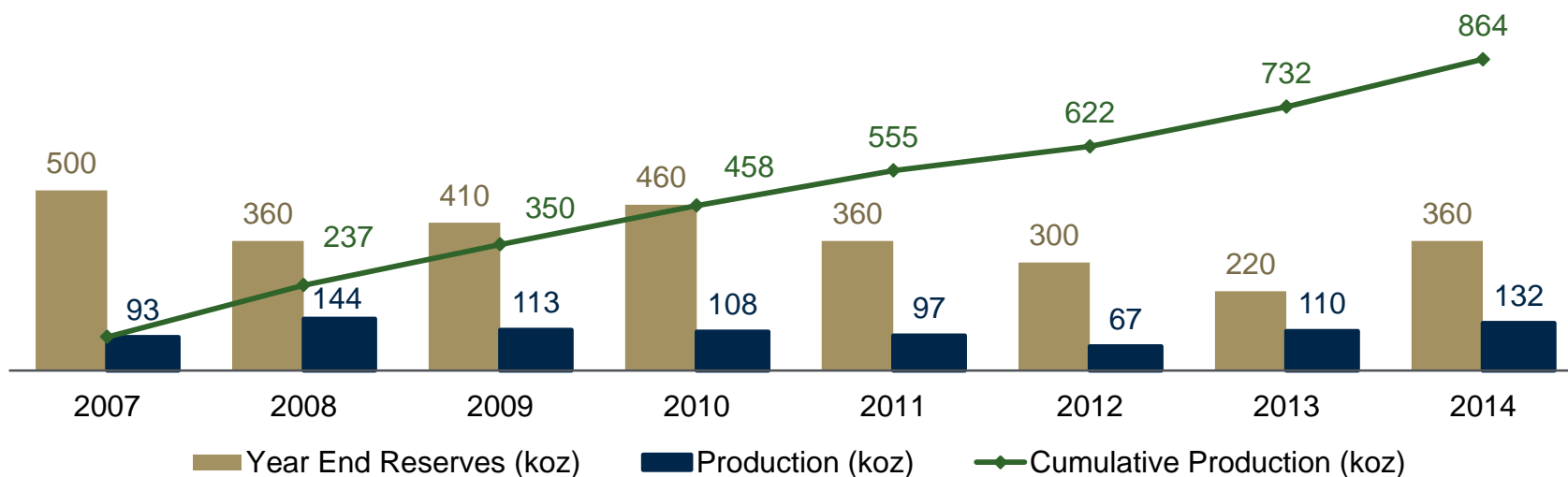
30-Year History at Waihi



Recent Historical Production and Reserves

Waihi has a track record of reserve replenishment over its 27 year history

Waihi Historical Production, Year End Reserves and Cumulative Production since 2007

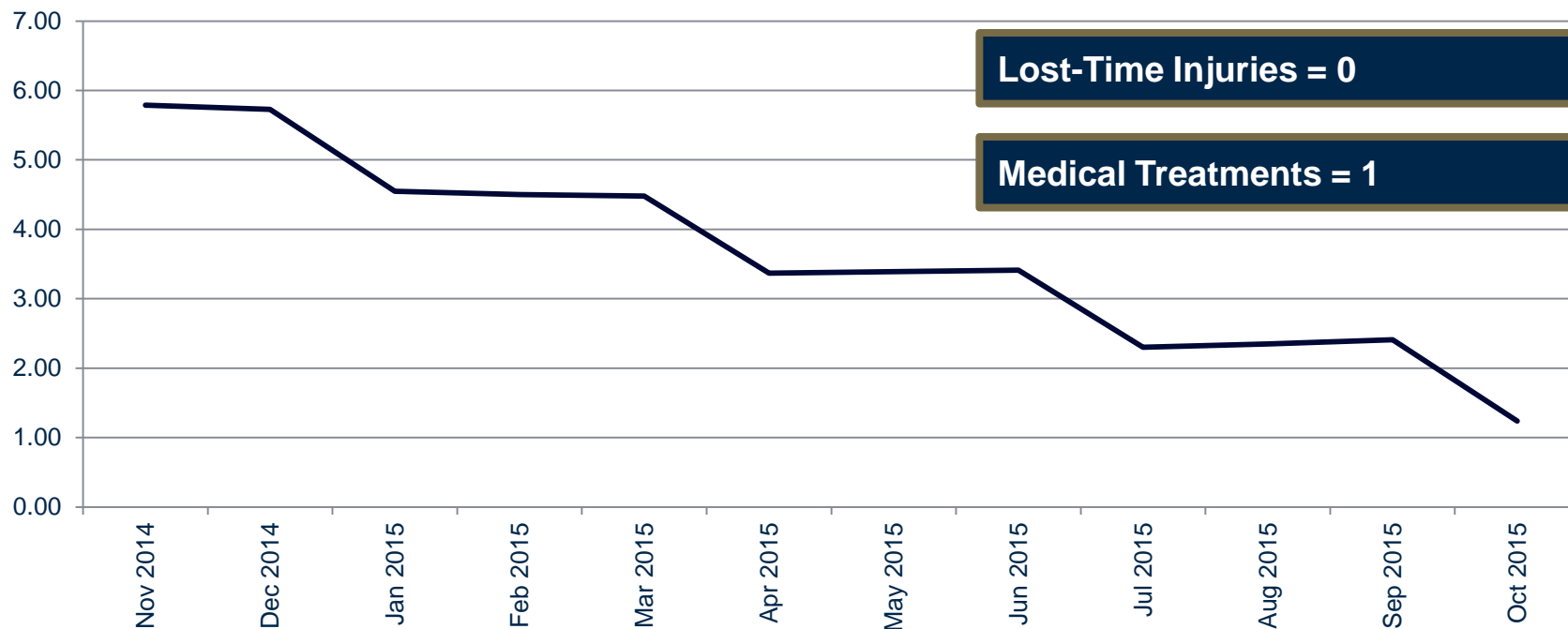


Source: Newmont Annual Reports.

Waihi has produced c.2.7Moz of gold since re-opening in 1988

Safety Performance

Total Recordable Injury Frequency Rate (12 Month Moving Average)



Excellent safety performance

Influencing regulatory reforms

Implementing OGC safety systems

Safety Initiatives



Show of Hands for Safety



Vital Behaviours Open Days



State-of-the-art, cross-industry ERT training program

Sound Environmental Management

An unwavering commitment to the environment today, for tomorrow

Farming



- Management of neighbouring farms

Native Fauna



- Monitoring of local wildlife

Rehabilitation



- Restoring lands with native flora

Water



- Six river monitoring sites

Dotterel



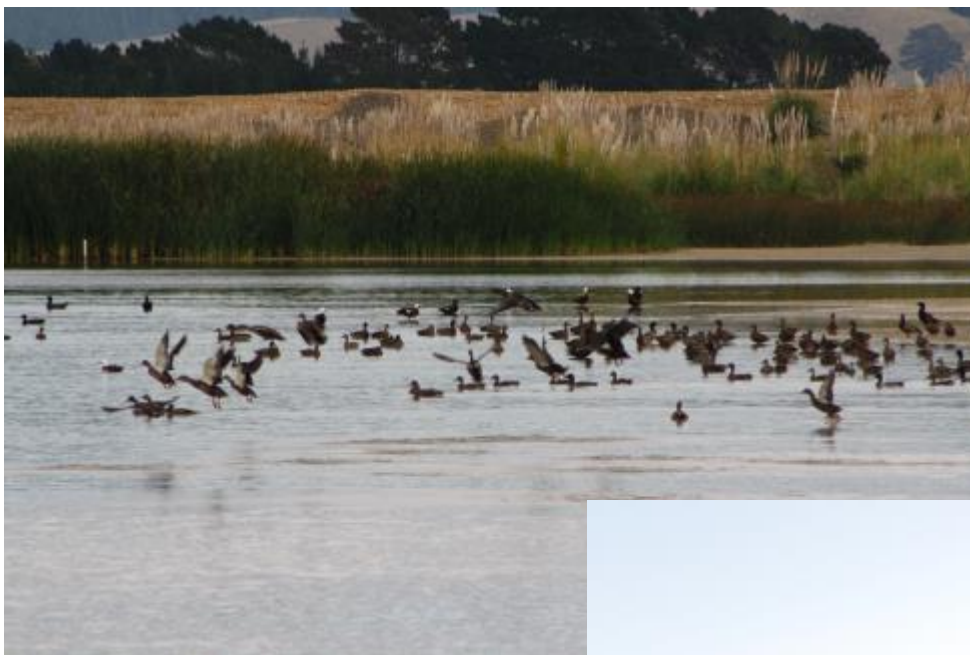
- Native Dotterel monitoring

Heritage



- Protection of significant sites

Tailings Impoundment



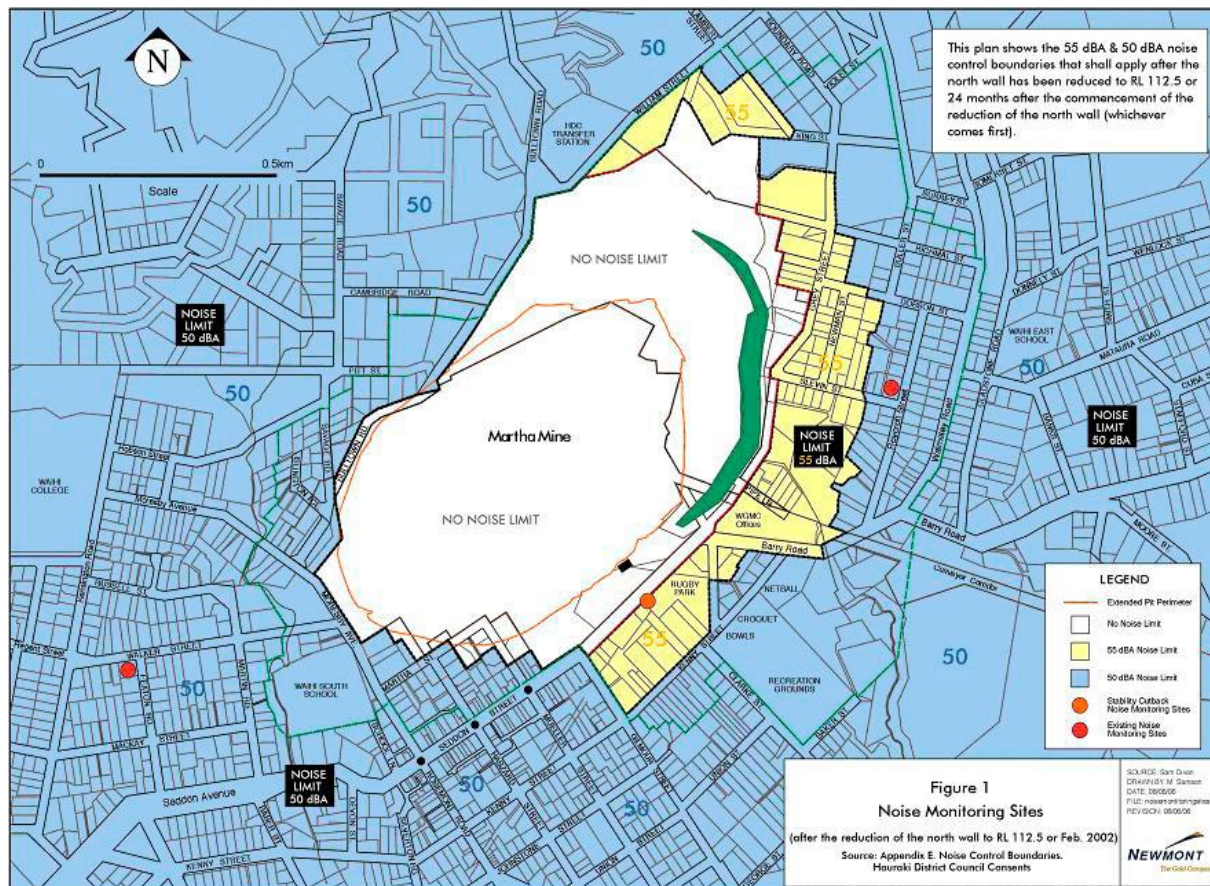
Indigenous wildlife – birdwatch conducted twice daily

Progressive rehabilitation



Community Relations

High engagement and monitoring due to proximity of mining activity



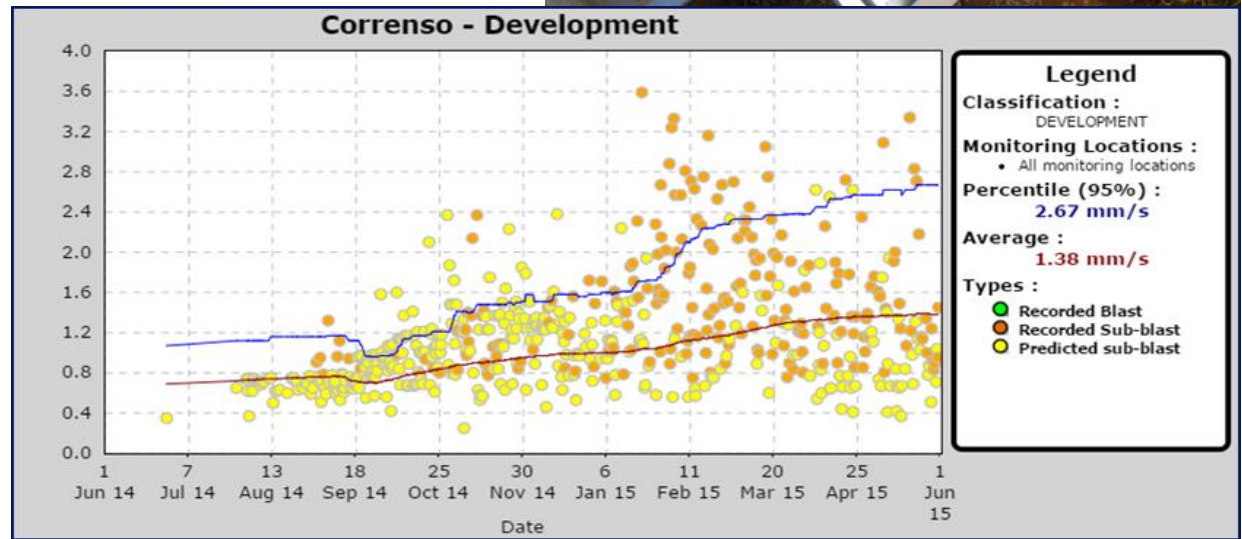
Noise Monitoring



Community Relations



Vibration & Dust Monitoring

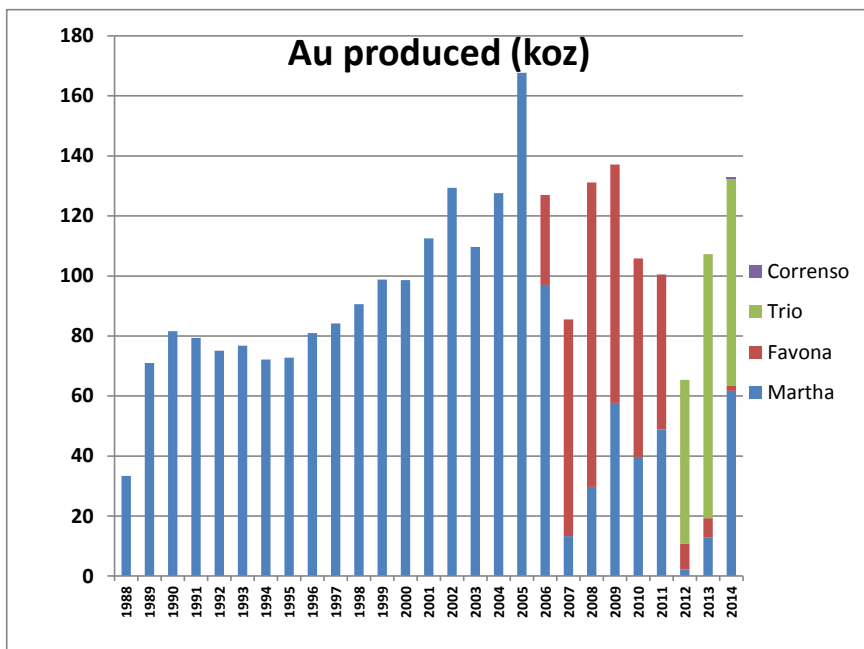


Martha Pit Stages



Four phases mined

1. Licensed Pit 1988 to 1999 (7.7Mt at 3.0g/t)
2. Extended Pit 1997 to 2006 (10.5Mt at 3.5g/t), north, east and south wall cutbacks, mill upgrade, new TSF
3. South Layback 2006 to 2011 (3Mt at 2.7g/t), historic pump-house relocation, south wall stabilization
4. East Layback from 2011 (1.1Mt at 3.1g/t)



Martha Open Pit – North Wall Failure

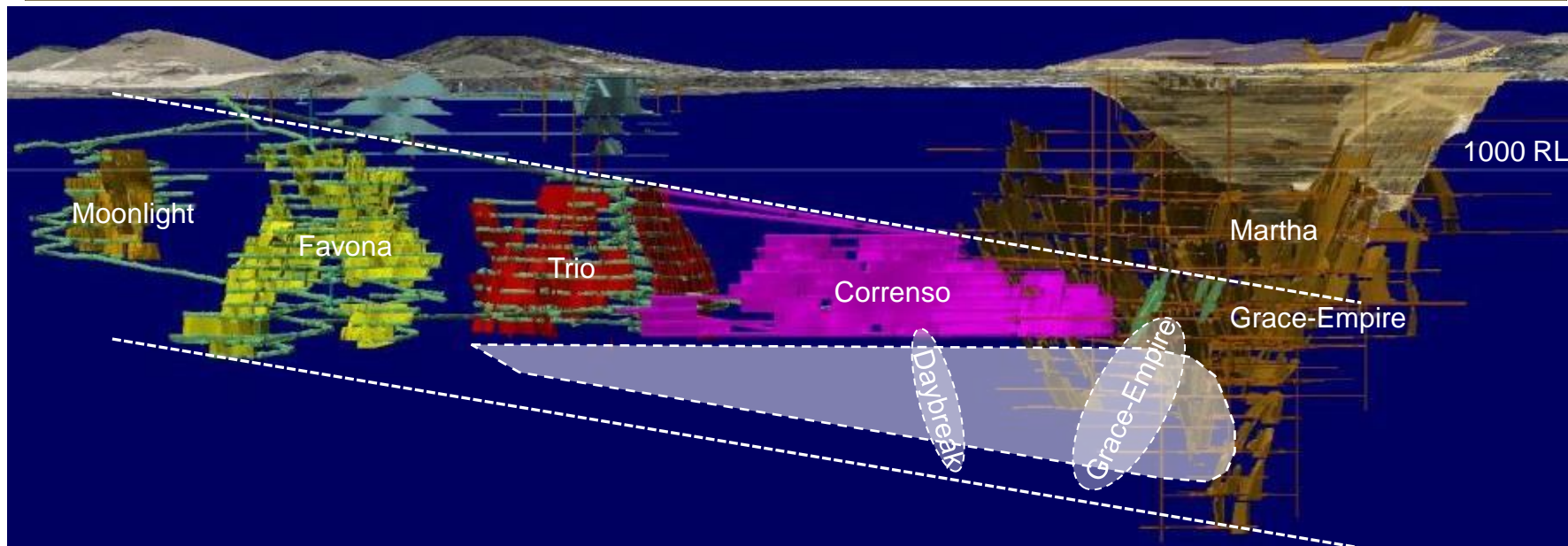
Ore remaining in Phase 4: 0.9Mt at 2.9 g/t



- North wall failure on upper ramp
- Looking at re-entry options

Correnso Underground Mine

Project capital commenced August 2014



Capital expenditure is complete. OGC expenditure plan being implemented

Currently producing 10-12 koz per month

Mining undertaken by Thiess under an Alliance contract

Unaffected by Martha Open-Pit wall slip

Correnso Underground Fleet

Equipment Type	Model	Quantity
Jumbos	Tamrock Axera 7-240	3
Production drills	Tamrock Solo 5-5V Tamrock Solo DL 3305	1 1
Trucks	Atlas Copco MT 5020	3
Charge unit	Normet 1610B	1
Shotcrete unit	Normet 6050W	1
Total carriers	Volvo L120F Volvo L120G	2 1
Grader	Catepillar 12H	1
Water cart	Isuzu NPR-33	1
Hiab Truck	Isuzu Hiab Truck	1



Processing Plant



Mill throughput of 0.5 Mtpa with suspension of open pit. Max throughput of 0.9 Mtpa (underground ore), 1.3 Mtpa for open pit ore only.

Crushing, grinding, fine grinding, carbon-in-pulp, elution, electro winning, and smelting



Achieving overall recoveries > 90% in 2015 in line with historical performance.

Identifying optimal operation strategy with reduced ore supply.

Process Flowsheet

Grinding

SAG and Ball mills grind ore to p80 <70 microns.

Leaching and Adsorption

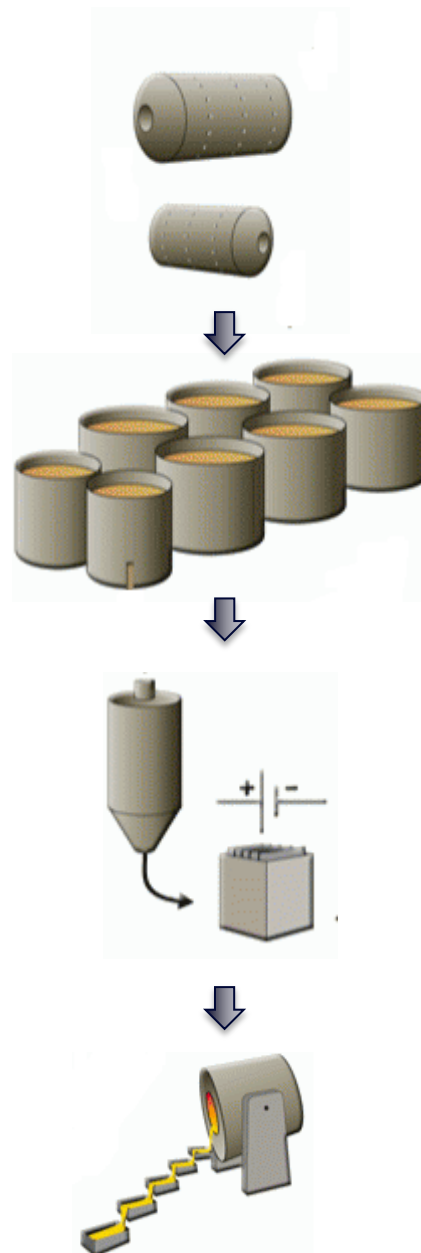
Weak cyanide solution dissolves gold and silver that is passed into six adsorption tanks.

Elution and Electrowinning

Loaded carbon washed and gold and silver is won onto steel cathodes.

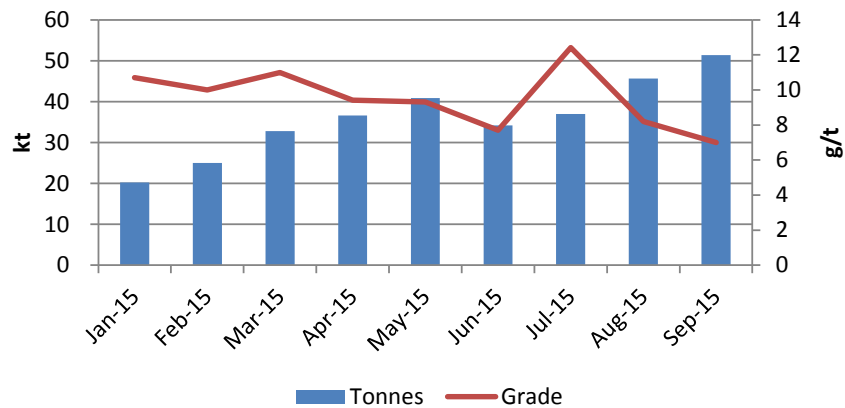
Bullion Production

Loaded cathodes rinsed and gold and silver is melted and molded into dore bullion.

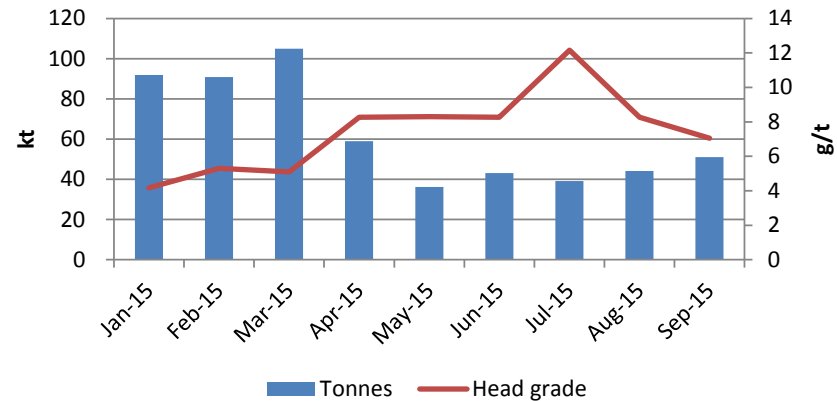


2015 YTD Physicals

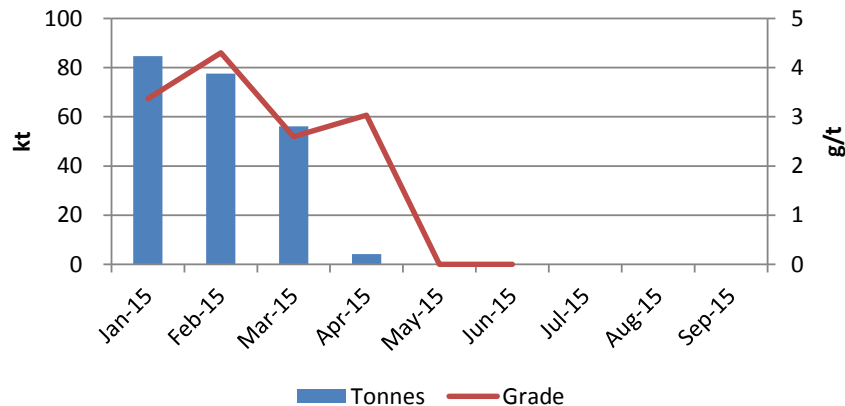
UG Ore Mined



Ore Processed



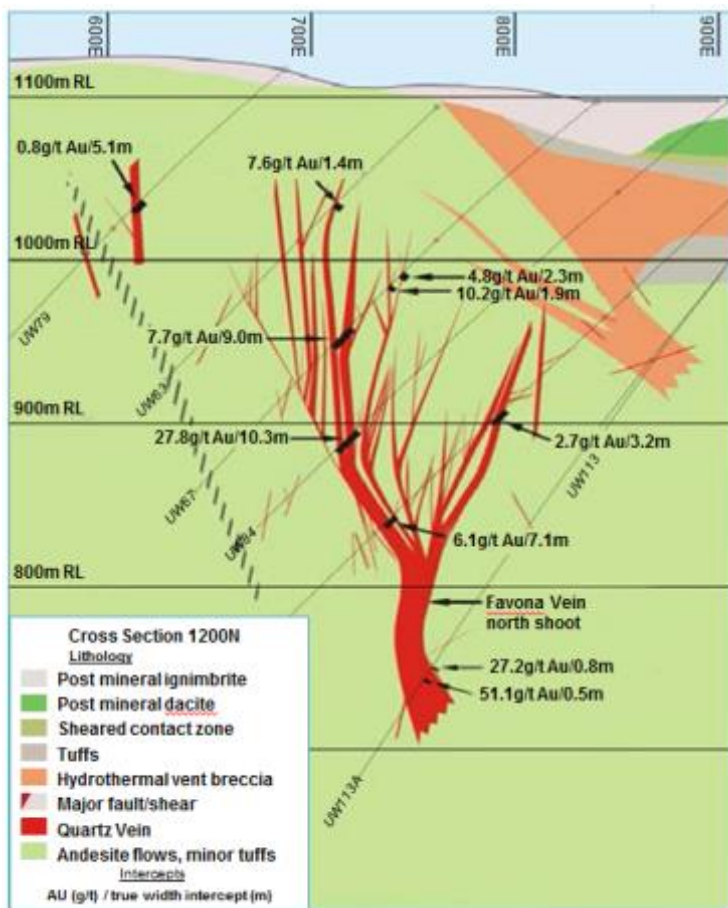
Open Pit Ore Mined



Opportunities and Growth: Opportunities

Opportunity	Action Plan
Operational improvements	<ul style="list-style-type: none"> • UG owner-mining • UG crib room and fibre optic • Review COG strategy; reduce COG if economic • Review of property divestment strategy • Supply pricing synergies • Processing study to optimise costs (eg campaign milling).
Recommence mining Martha Phase 4 pit	Investigate re-entry.
Martha Phase 5 pit	Scoping study underway and drilling scheduled.
Exploration (brownfields and greenfields)	Ramp up exploration in 2016 and 2017.
UG Backfill	Investigate UG exploration drive as cheaper backfill
Reduce cost of constructing outer capping layers on TSF- PAF surfaces by reducing thickness of NAF layer	Design and study to assess if any environmental effect; obtain regulatory approvals
Reduce tax payable by using tax losses within group	Tax planning

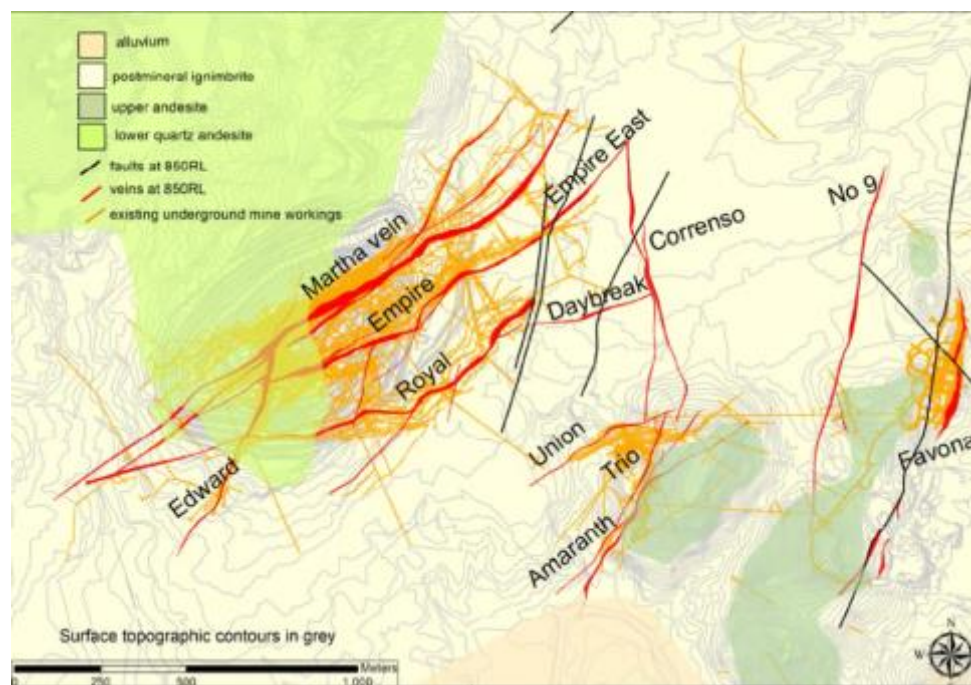
Waihi Geology



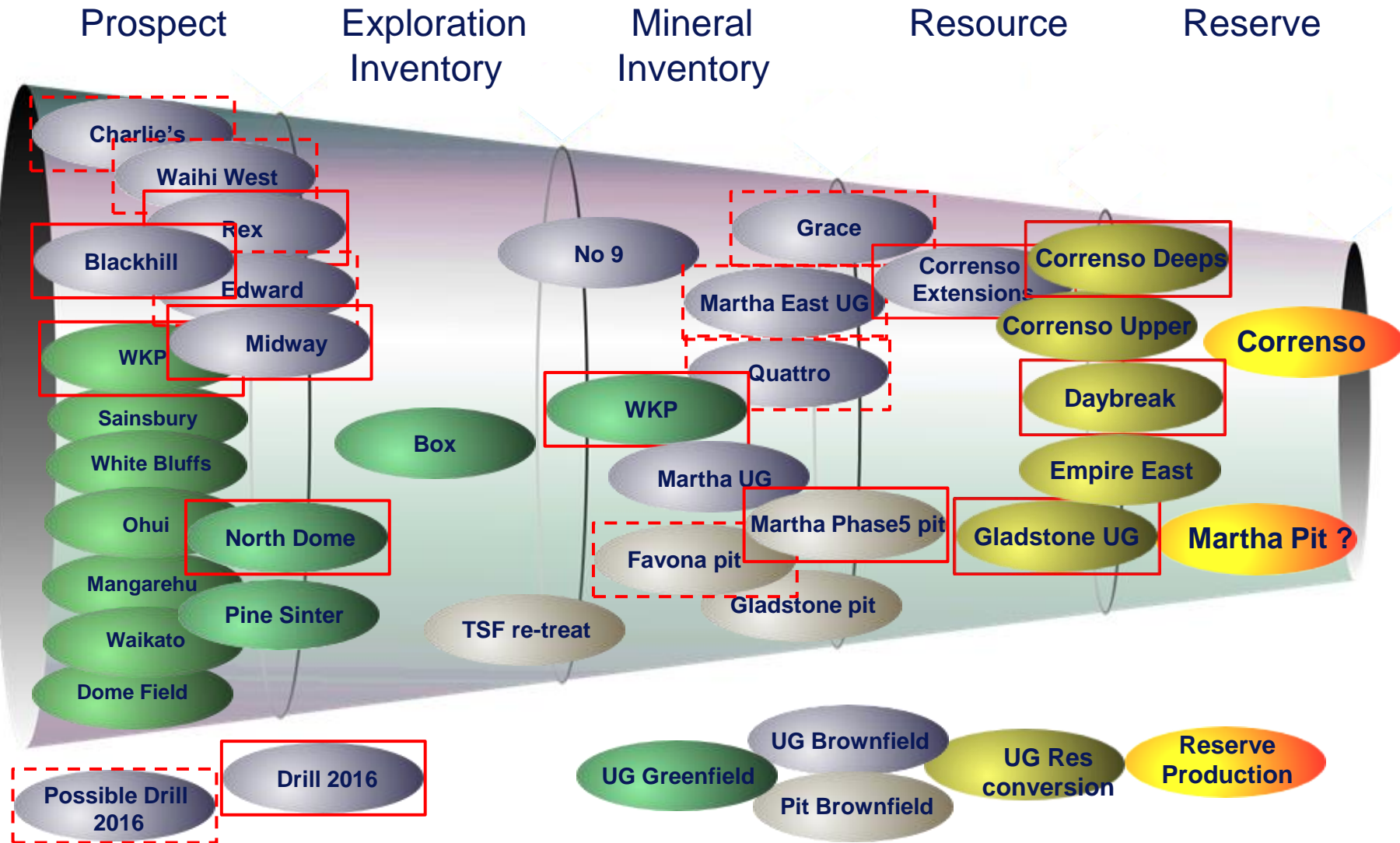
Low sulphidation epithermal gold & silver deposits in quartz veins within andesitic to rhyolitic volcanics

Main ore minerals are electrum & silver sulphides with minor pyrite

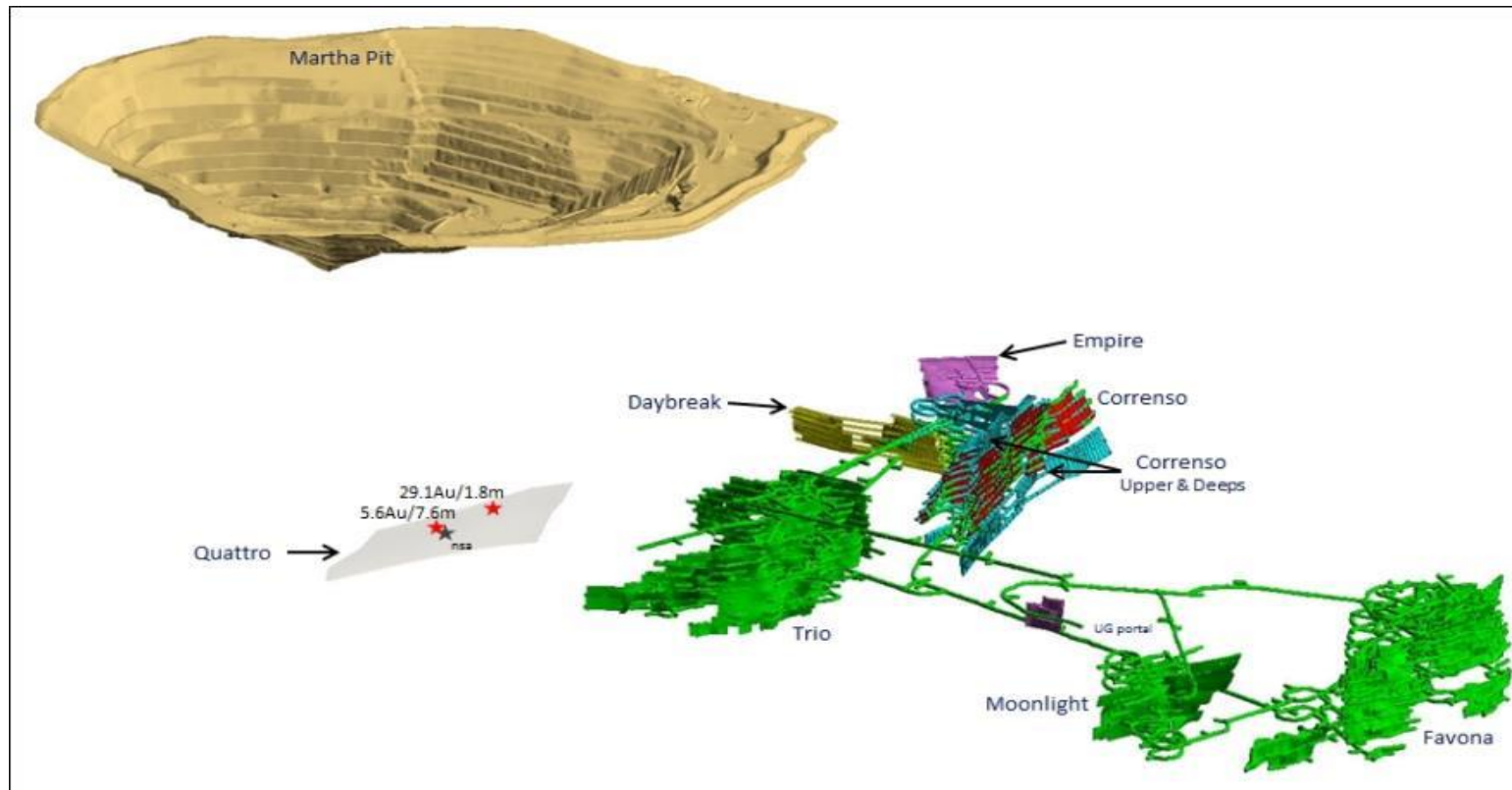
Generally steep dipping veins which splay upwards to narrower hanging wall vein sets, typically 1-5m wide



Waihi Project Pipeline 2015



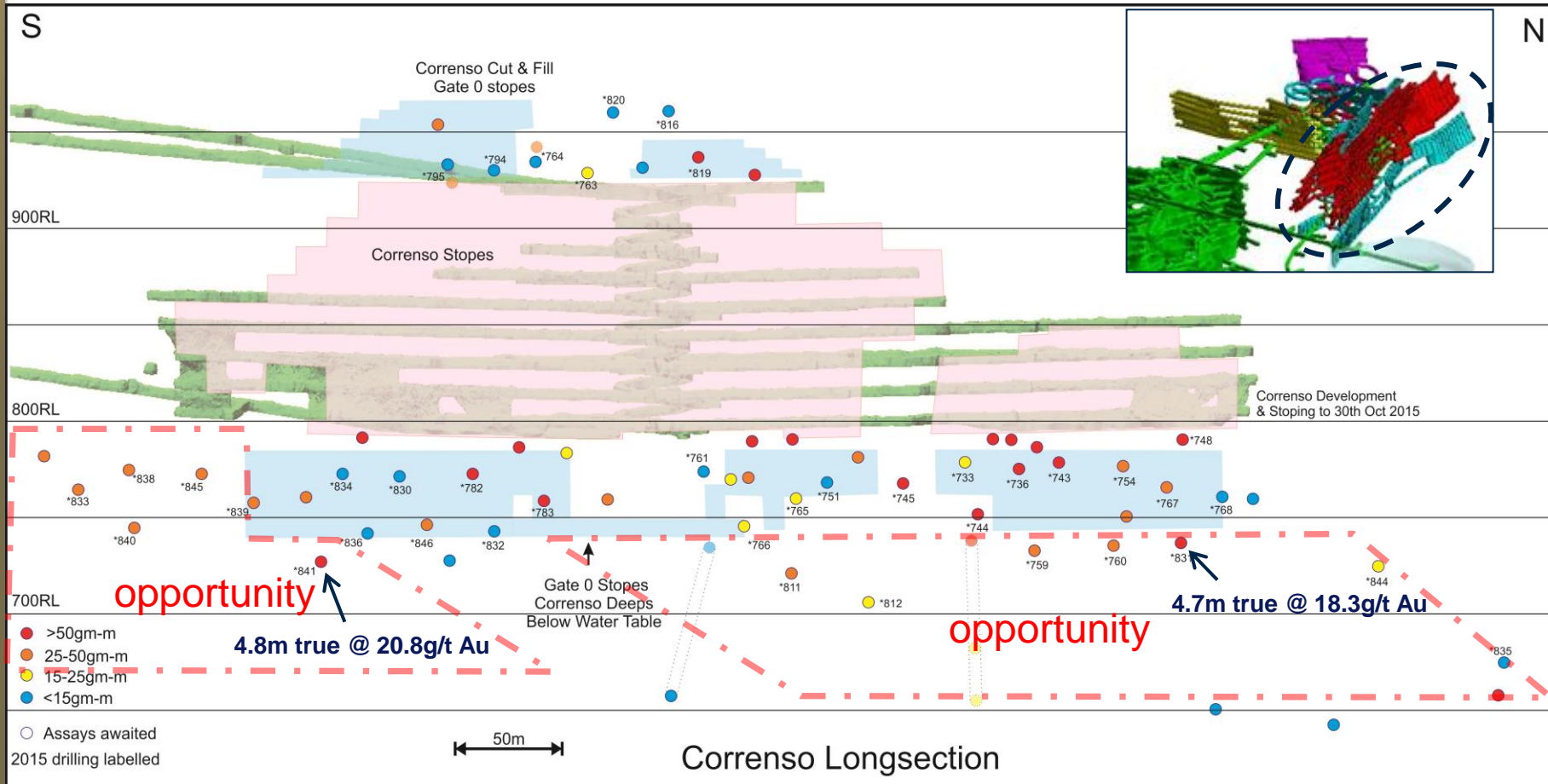
Brownfields Exploration



14,000 metres of drilling planned underground

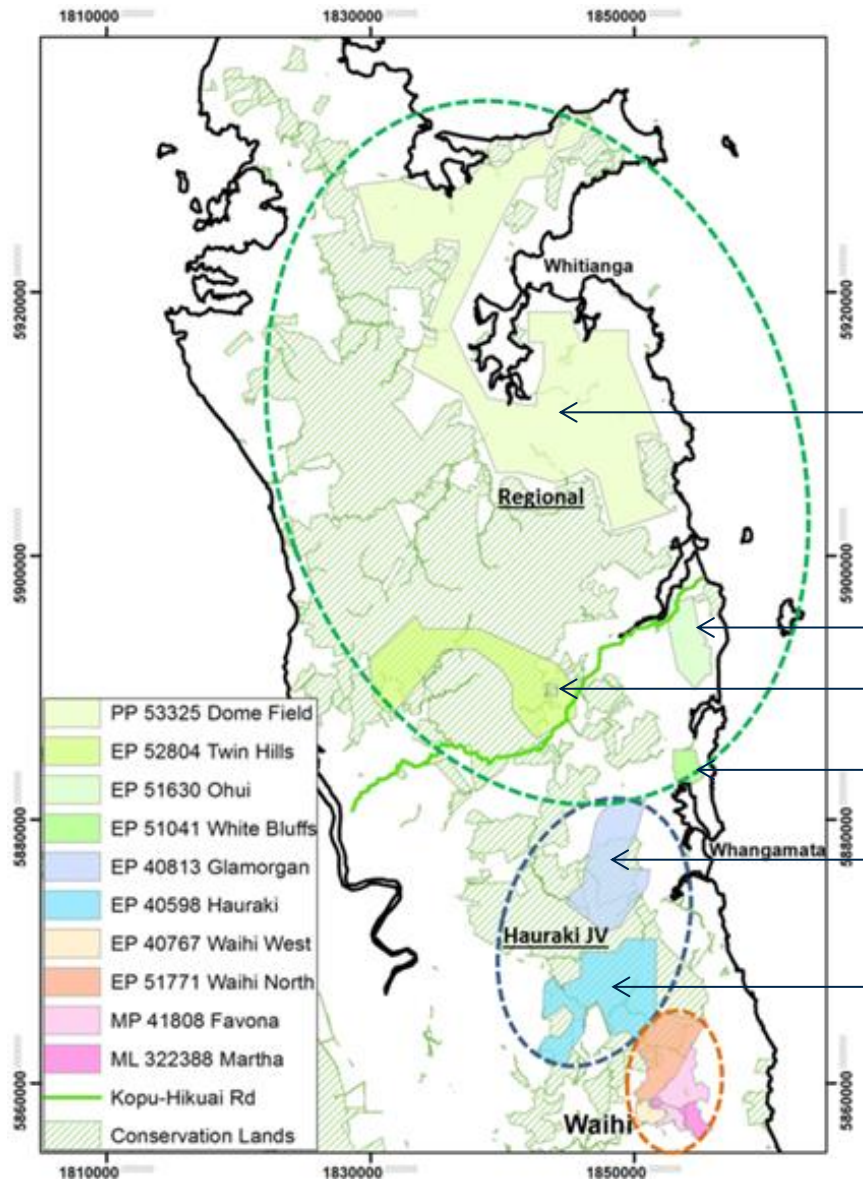
8,000 metres of drilling planned at Martha

Brownfields Exploration



Pumping infrastructure allows flexibility to go deeper

Greenfields Exploration



Dome Field: EP application/s – design and initiate program

Ohui: Remodel – target generation for 2017

Twin Hills: Map/sample – access post Treaty Settlement

White Bluffs: 500m drilling

Glamorgan: Map/sample – access post Treaty Settlement

Hauraki: Includes WKP, significant drill program planned for 2016



OCEANAGOLD

oceanagold.com

Innovation
Performance
Growth

