

Managing Director's Annual General Meeting 2015 Presentation to Shareholders

Attached please find a copy of the Managing Director's presentation to be delivered today at the company's AGM in Adelaide.

BACKGROUND INFORMATION

Renascor Resources is an Australian-based company focused on the discovery and development of economically viable deposits containing copper, gold, uranium and associated minerals. Renascor has an extensive tenement portfolio, holding interests in projects in key mineral provinces of South Australia, the Northern Territory and Western Australia.

FOR FURTHER INFORMATION, PLEASE CONTACT:

Mr David Christensen

Managing Director

+61 8 8363 6989

info@renascor.com.au

Mr Angelo Gaudio

Company Secretary

Renascor Resources Limited

ASX code: RNU

Annual General Meeting Presentation



Adelaide
26 November 2015
David Christensen
Managing Director

Company snapshot

ASX: RNU

Renascor's strategy is to maximize the prospects for economic discoveries by focusing on high-value, targeted drilling



Munglinup

High-value, drill-ready targets
Proven province for high-grade,
coarse-flake graphite
Low-cost entry
Immediate focus on drilling

Eastern Eyre

Advanced, large-scale copper project
Major position in Olympic Dam belt
High-grade copper from initial drilling
Next phase: unlock high value
targets

Project portfolio

Maximizing discovery prospects

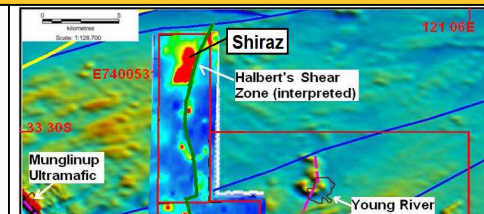
Expansion into graphite

Growing market
Diversification of risk
High-value, near-term opportunities



Western Australia

Munglinup
Graphite and nickel-sulphide
Opportunistic acquisition



South Australia

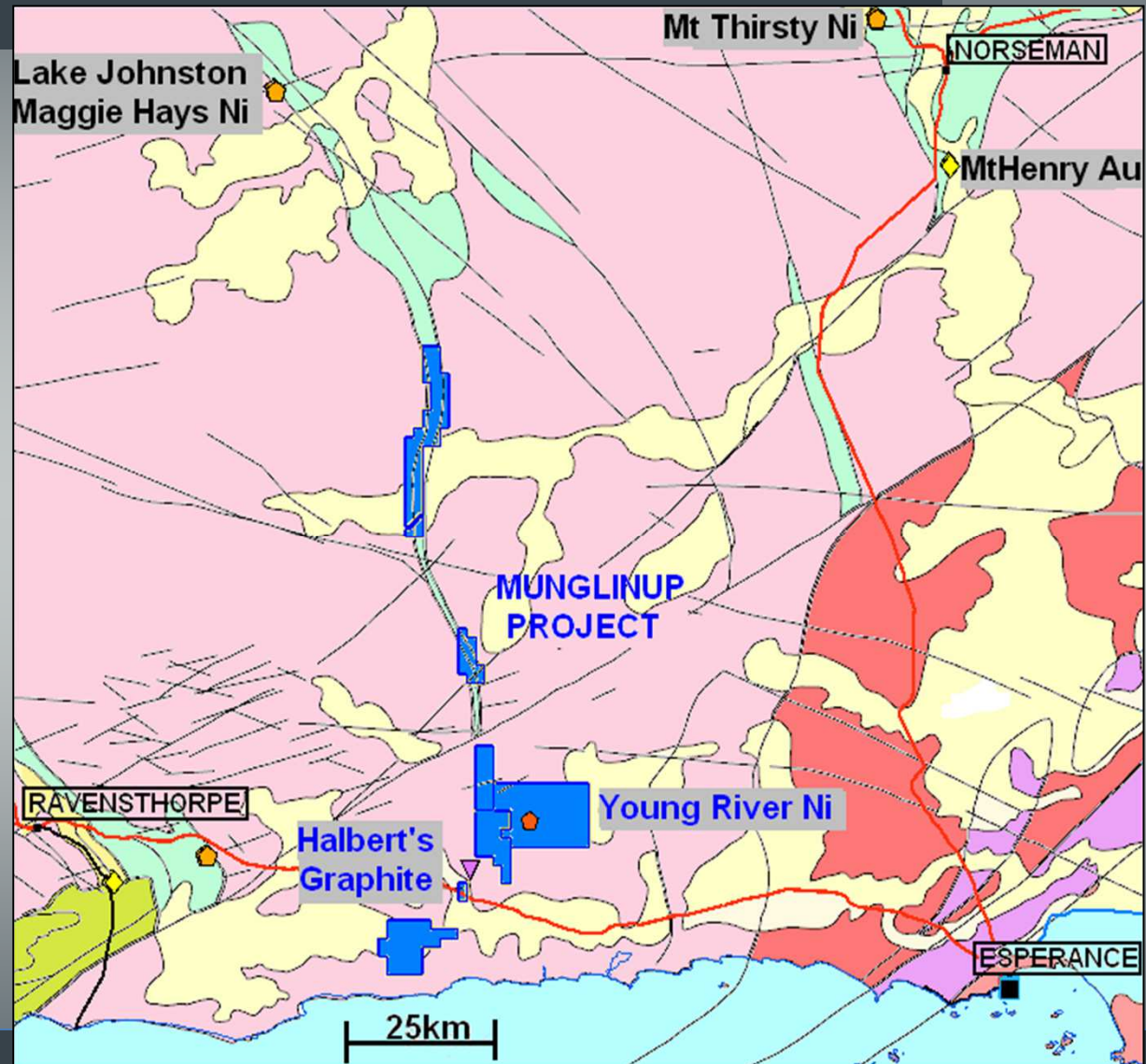
Eastern Eyre (copper)
Frome/Warrior (uranium)
Carnding (gold)
Gairdner (base metal/silver)
Marree (copper)



Munglinup project

**Low-cost entry
into proven
graphite/nickel
sulphide region of
Albany-Fraser
Range province of
Western Australia**

Renascor's Munglinup project (in blue), showing major mineral occurrences and regional structures



Munglinup project

High potential drilling

Immediate discovery targets

Untested EM conductors
Drill-ready

Multi-commodity

Graphite
Nickel-sulphide

Low-cost

Acquisition for shares
Extensive reconnaissance exploration
already completed
WA drill grant

Untapped opportunity

“Dormant” project
Private companies now active in region



Munglinup project

Graphite targets

High-grade graphite

Historic drill results of coarse flake graphite of up to 34.9% TCG within a target horizon of over 25km

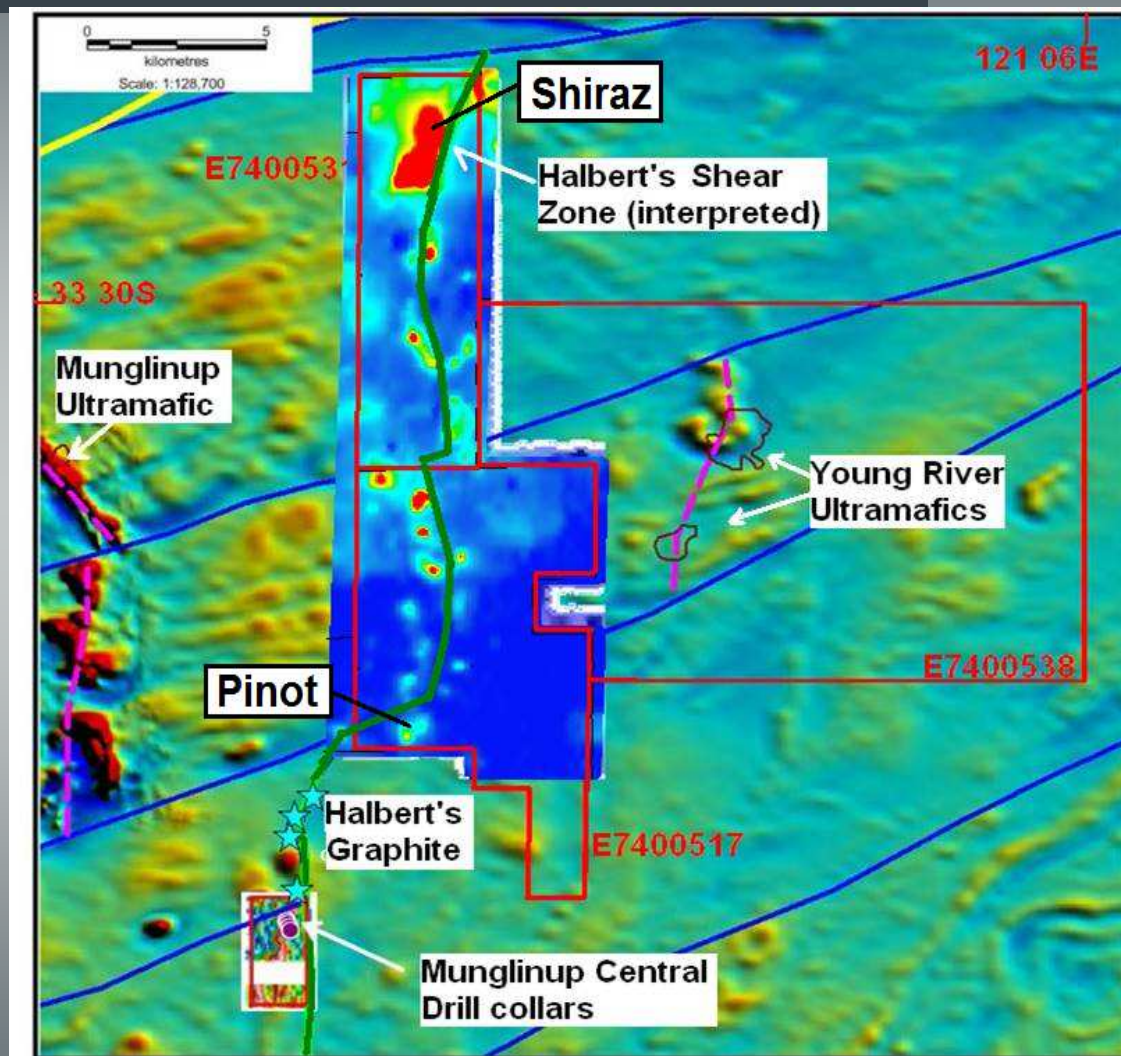
Proven large flake graphite province

Immediately adjacent to Halbert's graphite deposit (1.47Mt @ 18.2%TCG)

Drill-ready targets

Recently completed EM survey has defined multiple drill-ready targets along strike from the Halbert's deposit

Munglinup project, showing VTEM and SKYTEM late channel conductivity for central portion, superimposed on a background of magnetics



Munglinup project

Shiraz prospect

Extensive strike zone

+2km conductive anomaly
High-tonnage potential

Along-strike from Halbert's

Coincident with northern continuation of the regional Halbert's shear zone

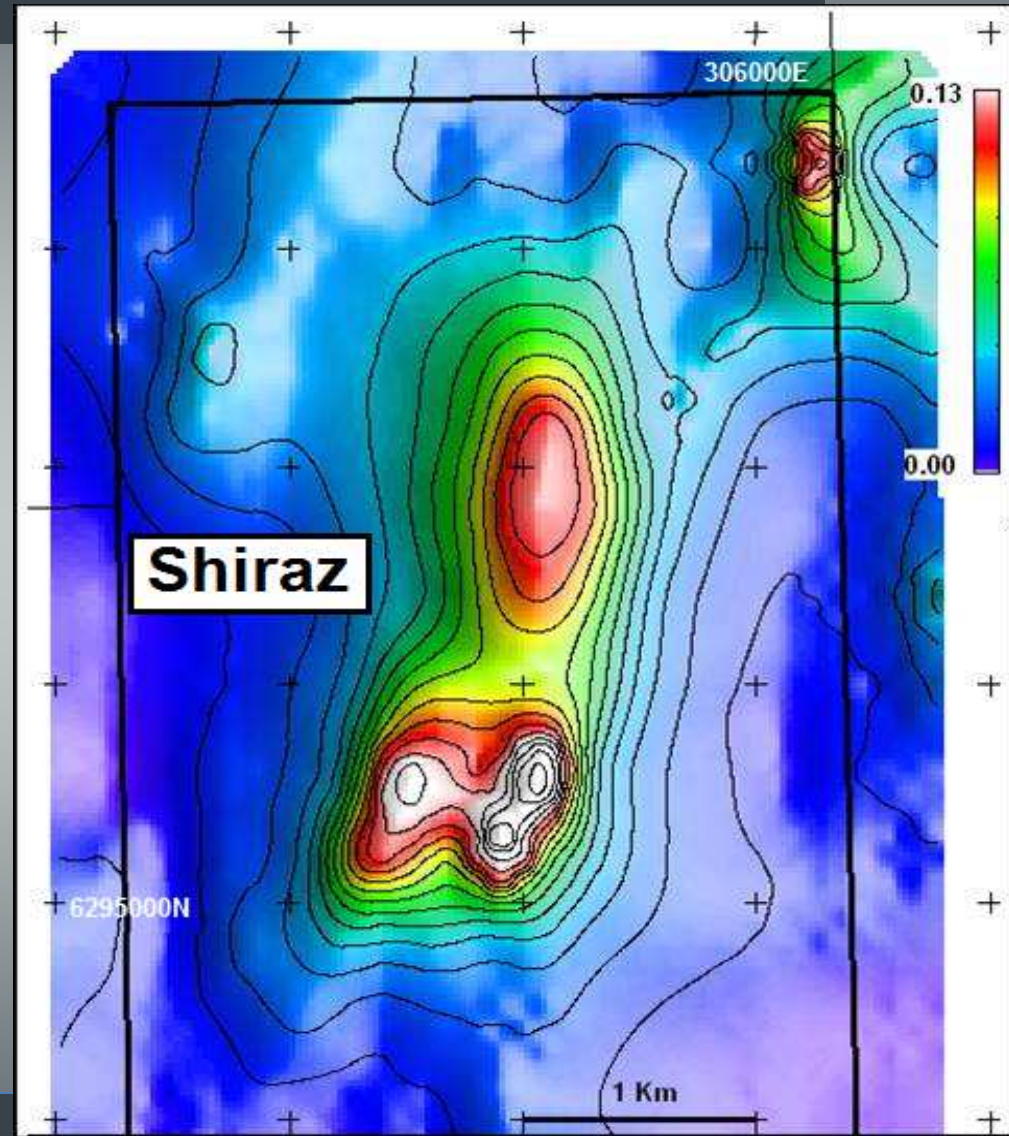
Broad southern zone

Two parallel confined conductors each of ~800m strike-length are defined in "late-time" VTEM data

Drill testing imminent

Expected to commence next month

Shiraz prospect VTEM image and contours for Channel 48, Zcomponent



Munglinup project

Pinot prospect

Adjacent to Halbert's

Immediately to the northeast of Halbert's graphite deposit

Long strike zone

+1km-strike late time conductor
High-tonnage potential

Controlling sheer structure

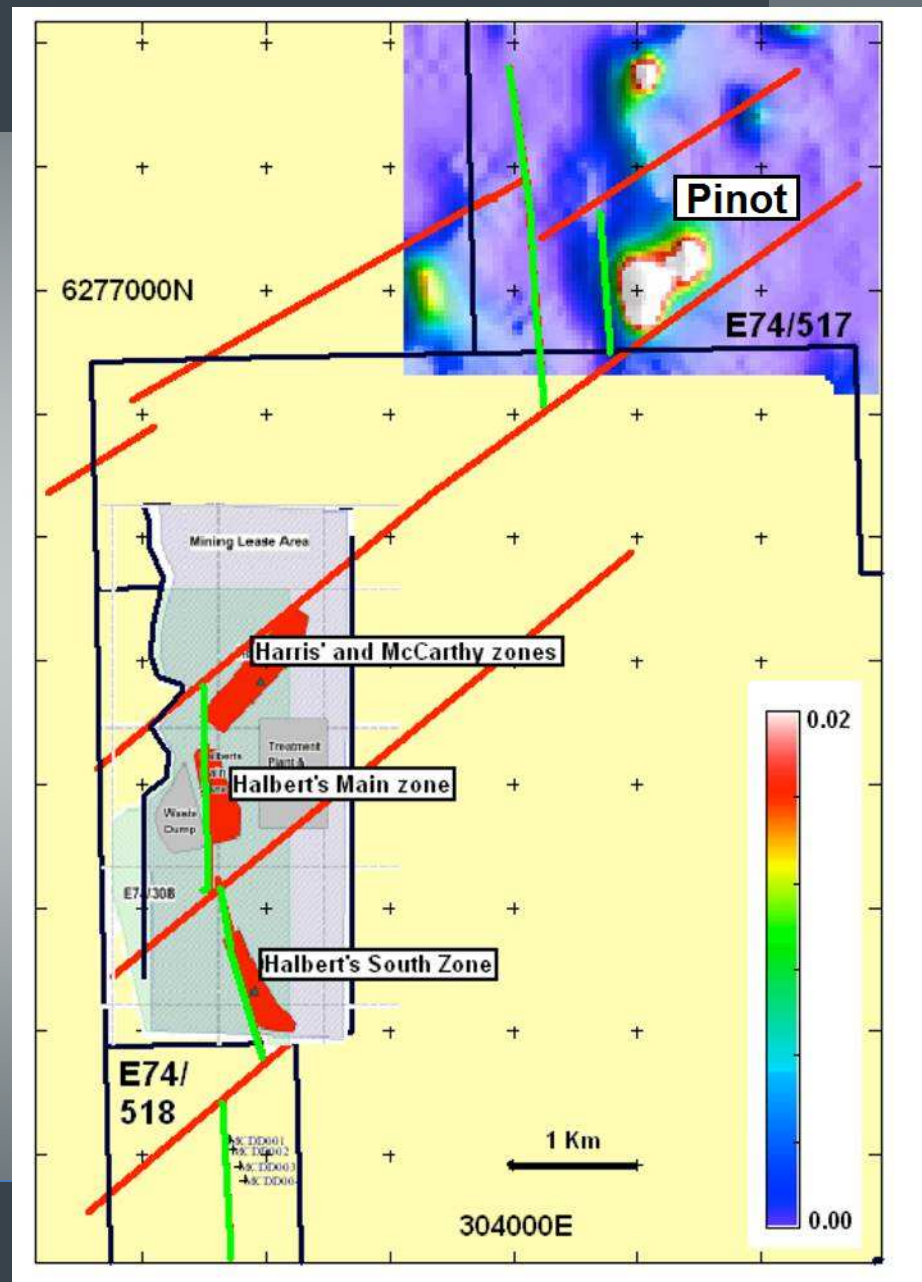
Offset northward continuation of the controlling Halbert's regional shear structure

Drill testing imminent

Expected to commence this next month

Pinot prospect – VTEM Channel 48 image, interpreted structures and mineralized zones for Halbert's graphite project (source: Adelaide Prospecting Pty Ltd Technical Report, E74/308 dated August 2009)

Renascor Resources



Munglinup project

Nickel sulphide

Lake Johnston belt

Continuation of Halbert's Shear represents possible offset continuation of Lake Johnston ultra mafics and nickel sulphide

EM conductors

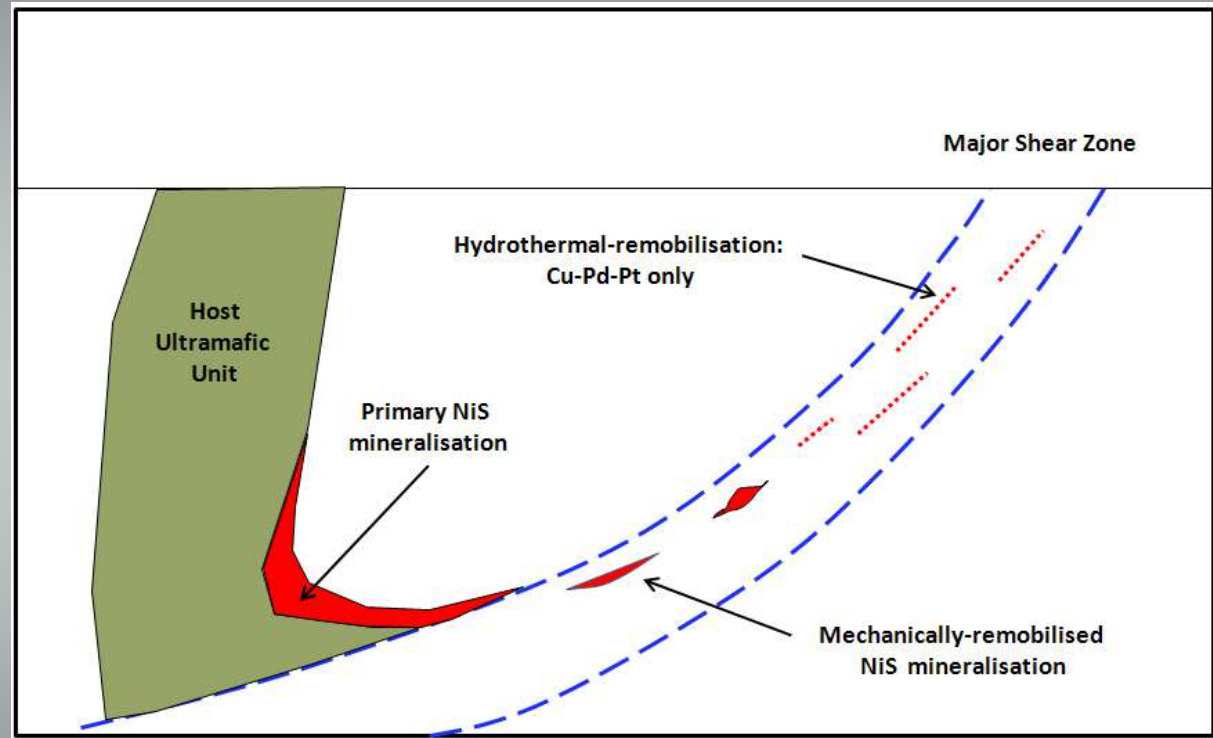
Identified from recent EM survey

Ultra mafics

Multiple occurrences of outcropping ultra mafics and near-surface geochemical anomalies

Project pipeline

Multiple prospects for drill-testing



Munglinup project -- Conceptual nickel sulphide mineralisation model (from Western Mining Services)

Eastern Eyre project

Renascor holds an enviable tenement package in a major copper province

Prominent Hill

210 Mt @ 1.22% Cu
from ~100m depth, discovered 2001

Olympic Dam

9,500 Mt @ 0.82% Cu
from ~300m depth, discovered 1975

Carrapateena/Khamsin

1,000 Mt @ 0.80% Cu
from ~500m depth, discovered 2005

Hillside

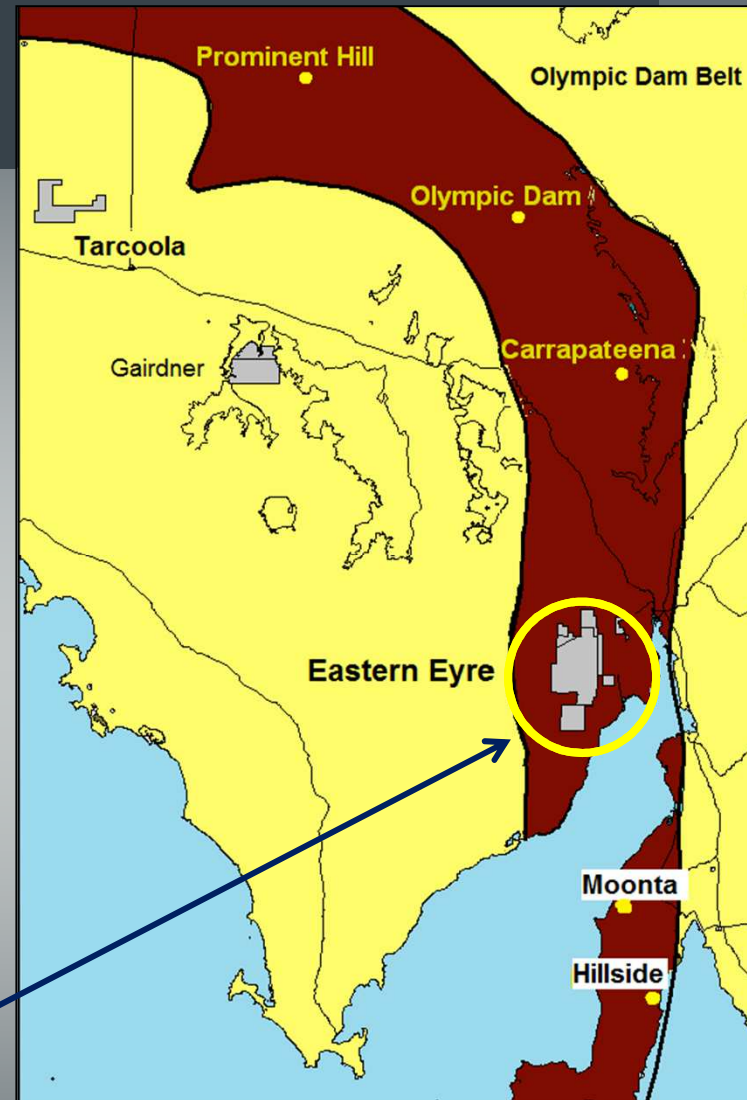
330 Mt @ 0.6 % Cu
from <50m depth, discovered 2008

Renascor's Eastern Eyre Project

+1,500km²

Targeting similar large-scale copper resources from
<50m cover depth

Amongst shallowest cover sequences in region



Olympic Dam copper belt, showing location of Renascor's Eastern Eyre and other projects in relation to significant copper deposits

Eastern Eyre project

Angle Dam fault

Extensive mineralisation zone

Massive copper sulphides and associated base metals

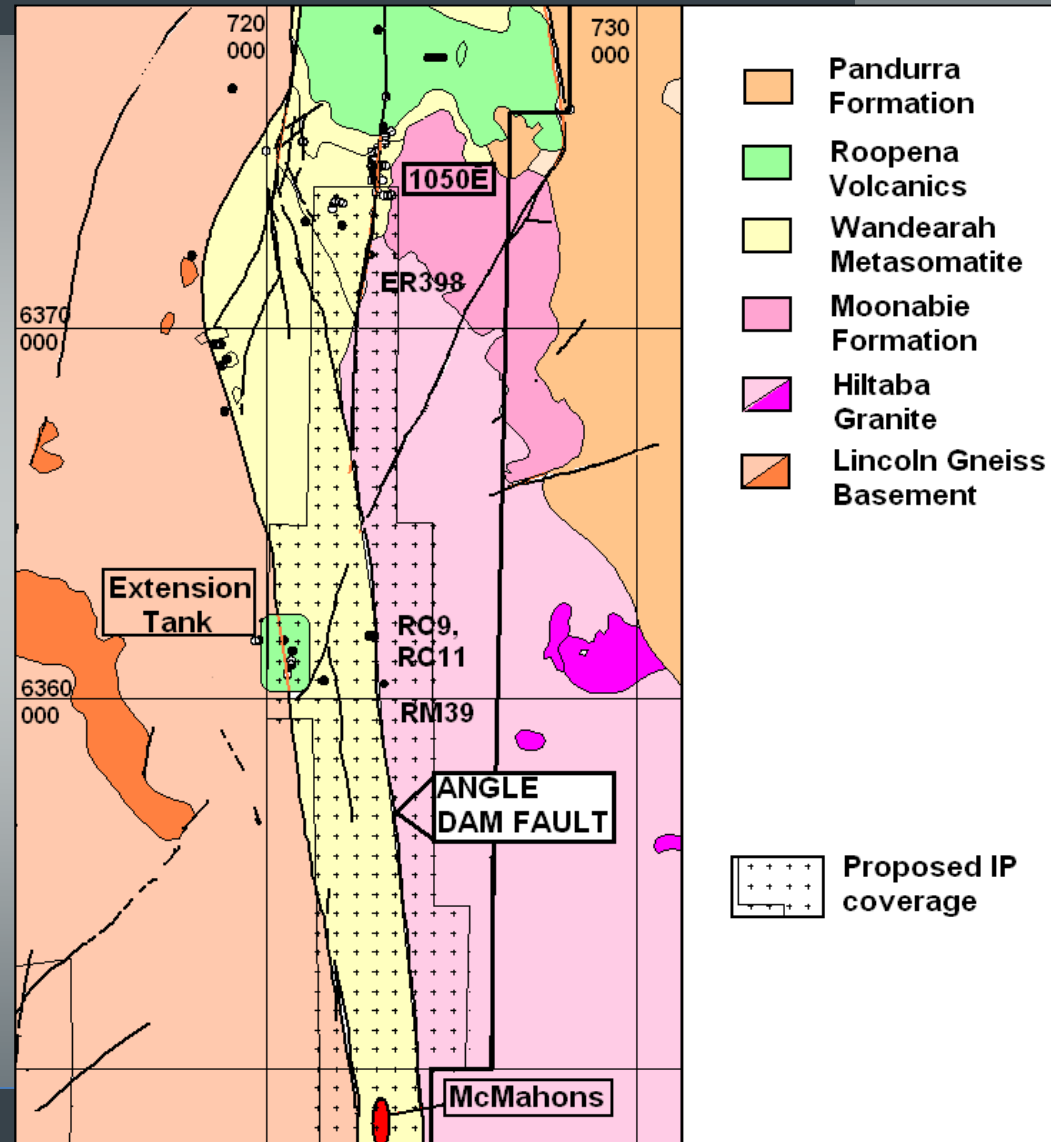
Recent drilling

Extends mineralisation south of 1050 East

Next steps

IP to prioritise next-stage drill targets

Eastern Eyre project, showing proposed induced polarisation coverage



Eastern Eyre project

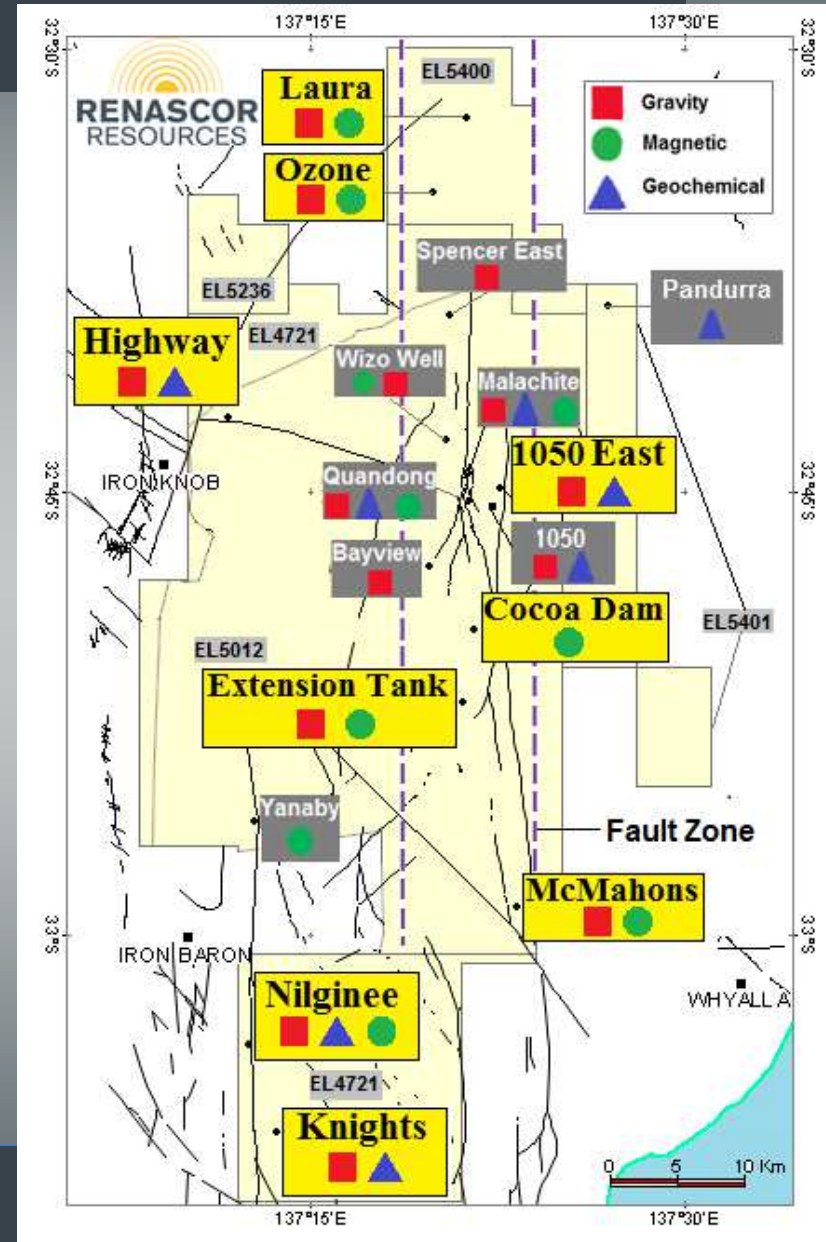
Prospect pipeline

Additional high-priority copper targets

Roopena-Angle Dam fault (+40km)
Mineralised system with limited historical exploration

Pipeline of targets for subsequent drill programs

Eastern Eyre Project, showing prospect locations



Greenfield exploration

Farina, Gairdner and Carnding projects

Low carrying cost opportunities in base and precious metals

Farina

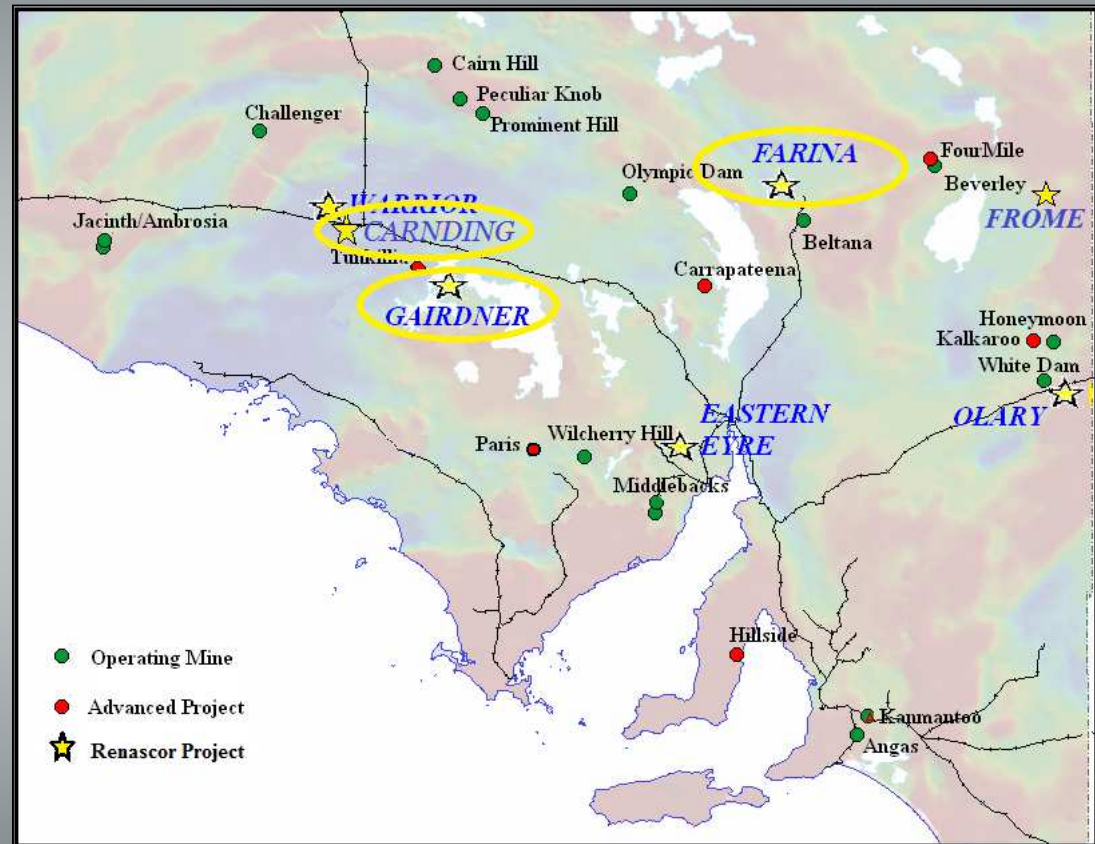
- ✓ Major position in Adelaide Fold Belt
- ✓ Targeting large tonnage Zambian Copper Belt-style
- ✓ Project area expanded in 2014 with acquisition of key ground containing ore-grade copper intersections from Utah Development drilling in 1970/80s

Carnding

- ✓ Strategic position in Gawler Craton
- ✓ Targeting gold

Gairdner

- ✓ Nickel, silver and copper targets in Central Gawler Craton



Uranium Projects

Warrior and Frome

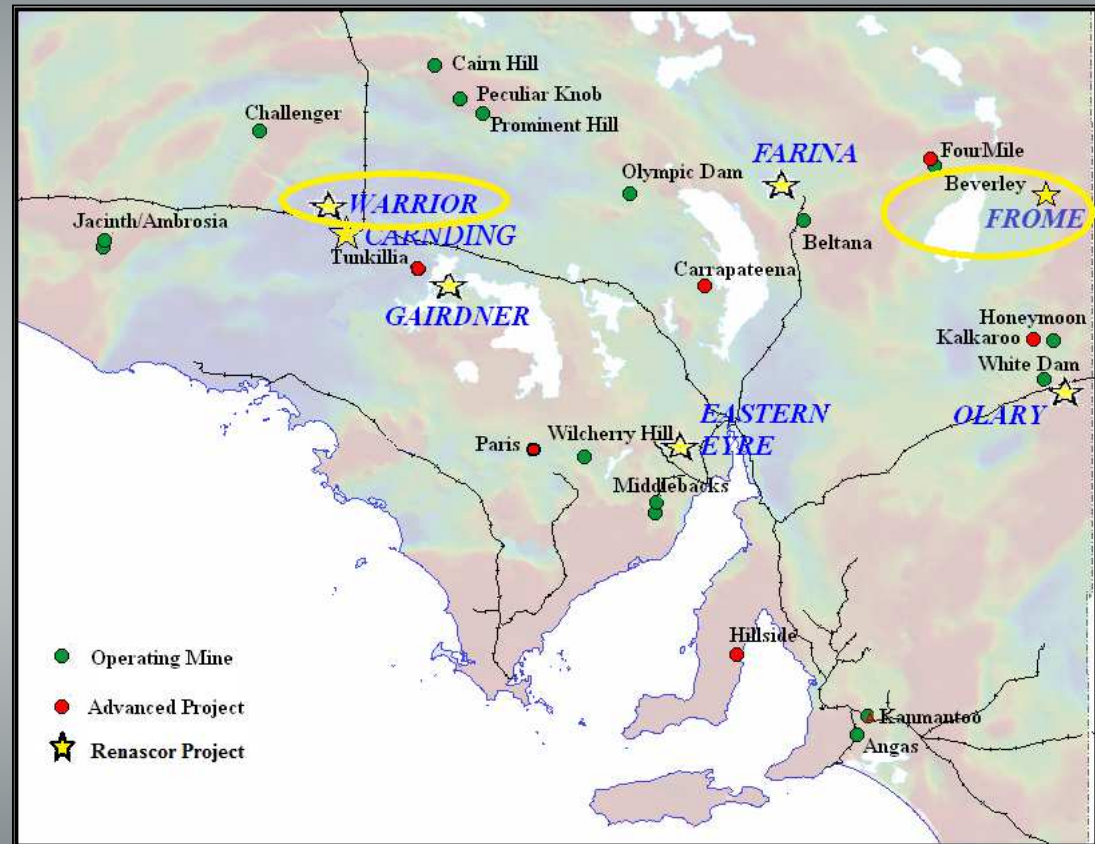
Portfolio includes low-cost opportunities to take advantage of increase in uranium price

Warrior

- ✓ Advanced, historic uranium project
- ✓ Limited modern exploration
 - ✓ Two-fold opportunity:
 - Modern exploration methods to re-calibrate (and enhance) grade
 - Extend size through additional drilling of paleochannel

Frome

- ✓ Major strategic position near Beverley/Four Mile uranium mines
- ✓ Basement fault setting comparable to Four Mile
 - ✓ Immediate drill targets



Share price drivers

Catalysts for re-rating

Munglinup drilling

Graphite drilling to commence next month
Pipeline of graphite/nickel-sulphide targets

South Australia

Eastern Eyre copper
Carnding gold

New acquisitions

Currently under review



Example of coarse flake graphite (from Syrah Resources (ASX: SYR) Balama West project on Mozambique)

Important notice

Forward Looking Statements

This Presentation may include statements that could be deemed “forward-looking” statements. Although Renascor Resources Limited (the “Company”) believes the expectations expressed in such forward-looking statements are based on reasonable assumptions, such statements are not guarantees of future performance and actual results or developments may differ materially from those expected in the forward-looking statements or may not take place at all.

No Offer to Sell or Invitation to Buy

This Presentation is not, and should not be considered to, constitute any offer to sell, or solicitation of an offer to buy, any securities in the Company, and no part of this Presentation forms the basis of any contract or commitment whatsoever with any person. The Company does not accept any liability to any person in relation to the distribution or possession of this Presentation from or in any jurisdiction.

Disclaimer

Whilst care has been exercised in preparing and presenting this Presentation, to the maximum extent permitted by law, the Company and its representatives make no representation, warranty or undertaking, express or implied, as to the adequacy, accuracy, completeness or reasonableness of this Presentation; accept no responsibility or liability as to the adequacy, accuracy, completeness or reasonableness of this Presentation; and accept no responsibility for any errors or omissions from this Presentation

Competent Persons Statement

The exploration results in this Presentation, insofar as they relate to mineralisation, are based on information compiled by Mr G. W. McConachy (fellow of the Australasian Institute of Mining and Metallurgy) who is a director of the Company. Mr McConachy has sufficient experience relevant to the style of mineralisation and type of deposits being considered to qualify as a competent person as defined by the 2012 edition of the Australasian Code for Reporting of Exploration Results, Mineral Resources and Ore Reserves (the JORC code, 2012 edition). Mr McConachy consents to the inclusion in the report of the matters based on his information in the form and context in which it appears.