

# Emerging Gold Projects Cote d'Ivoire and Australia



# Disclaimer

This document has been prepared by Apollo Consolidated Ltd (ACN 102 084 917) (Apollo or the Company). No party other than Apollo has authorised or caused the issue of this document, or takes responsibility for, or makes any statements, representations or undertakings in this document.

Presentation of general background: This document contains general background information about Apollo's proposed activities current as at the date of this presentation (Information). It is Information in a summary form only and does not contain all the information necessary to fully evaluate any investment. Further information on Apollo can be obtained from its website; [www.apolloconsolidated.com.au](http://www.apolloconsolidated.com.au)

Not investment advice: The Information provided in this presentation is not intended to be relied upon as advice to investors or potential investors and has been prepared without taking into account the recipient's investment objectives, financial circumstances or particular needs. Any investment decision should be made based solely upon appropriate due diligence and, if applicable, upon receipt and careful review of relevant offering documents. Recipients of this presentation are advised to consult their own professional advisers. An investment in any company, including Apollo, is subject to significant risks of loss of income and capital.

Financial data: All dollar values are in Australian dollars (A\$) unless otherwise stated.

Future performance: This presentation contains certain forward-looking statements. The words 'anticipate', 'believe', 'expect', 'project', 'forecast', 'estimate', 'likely', 'intend', 'should', 'could', 'may', 'target', 'plan' and other similar expressions are intended to identify forward-looking statements. Indications of, and guidance on, future earnings and financial position and performance are also forward-looking statements. Such forward-looking statements are not guarantees of future performance and involve known and unknown risks, uncertainties and other factors, many of which are beyond the control of Apollo, and its officers, employees, agents and associates, that may cause actual results to differ materially from those expressed or implied in such statements. Actual results, performance or outcomes may differ materially from any projections and forward-looking statements and the assumptions on which those assumptions are based. You should not place undue reliance on forward-looking statements and neither Apollo nor any of its directors, employees, servants, advisers or agents assume any obligation to update such Information.

Risks: An investment in Apollo's securities is subject to investment and other known and unknown risks, some of which are beyond the control of Apollo and Apollo's directors, employees, advisers or agents. Some of the risks associated with an investment in Apollo are set out in its Prospectus dated January 2012.

# Competent Persons Statement

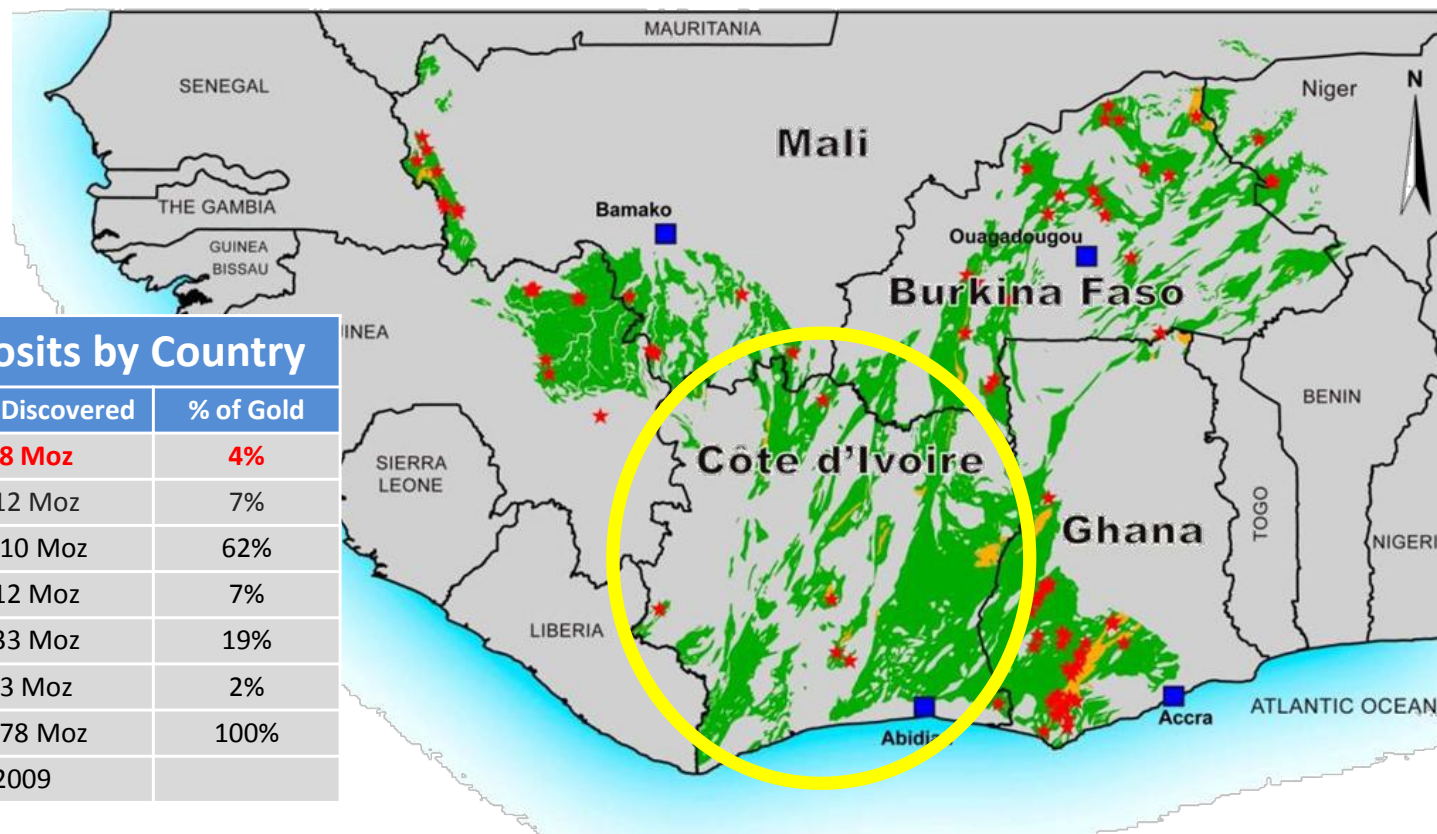
The information in this document that relates to Exploration Results is based on information compiled or reviewed by Mr Nick Castleden who is a director of the Company and a Member of the Australian Institute of Geoscientists. Mr Castleden has sufficient experience which is relevant to the style of mineralisation and type of deposit under consideration and to the activity which he is undertaking to qualify as a Competent Person as defined in the 2012 Edition of the 'Australasian Code for Reporting of Exploration Results, Mineral Resources and Ore Reserves'. Mr Castleden consents to the inclusion in this document of the matters based on his information in the form and context in which it appears.

Exploration results referring to the Seguela Project have been previously prepared and disclosed by Apollo Consolidated Limited in accordance with JORC Code 2004. The Company confirms that it is not aware of any new information or data that materially affects the information included in these market announcements. The exploration results previously prepared and disclosed under the JORC 2004 have not been updated since to comply with the JORC Code 2012 on the basis that the information has not materially changed since it was last reported. The Company confirms that the form and context in which the Competent Person's findings are presented here have not been materially modified from the original market announcement. Refer to [www.apolloconsolidated.com.au](http://www.apolloconsolidated.com.au) for details on exploration results.

# Cote d'Ivoire as a major gold exploration destination



- Over 178moz gold discovered in West African Shield
- Shallow, fast-emerging resources. Lowest discovery costs
- Cote d'Ivoire has largest endowment of host rocks in region
- **Cote d'Ivoire is least explored – discoveries to come**
- Good infrastructure
- Vastly improved political and economic environment

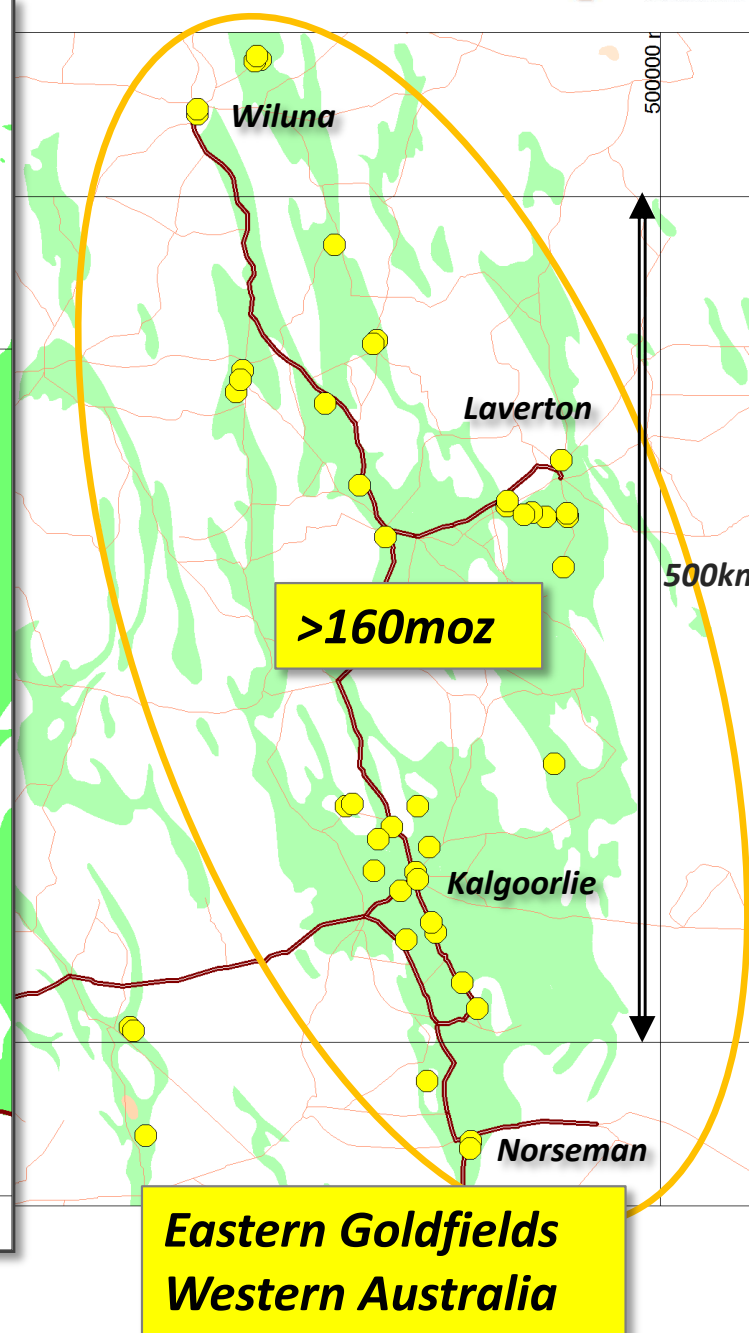
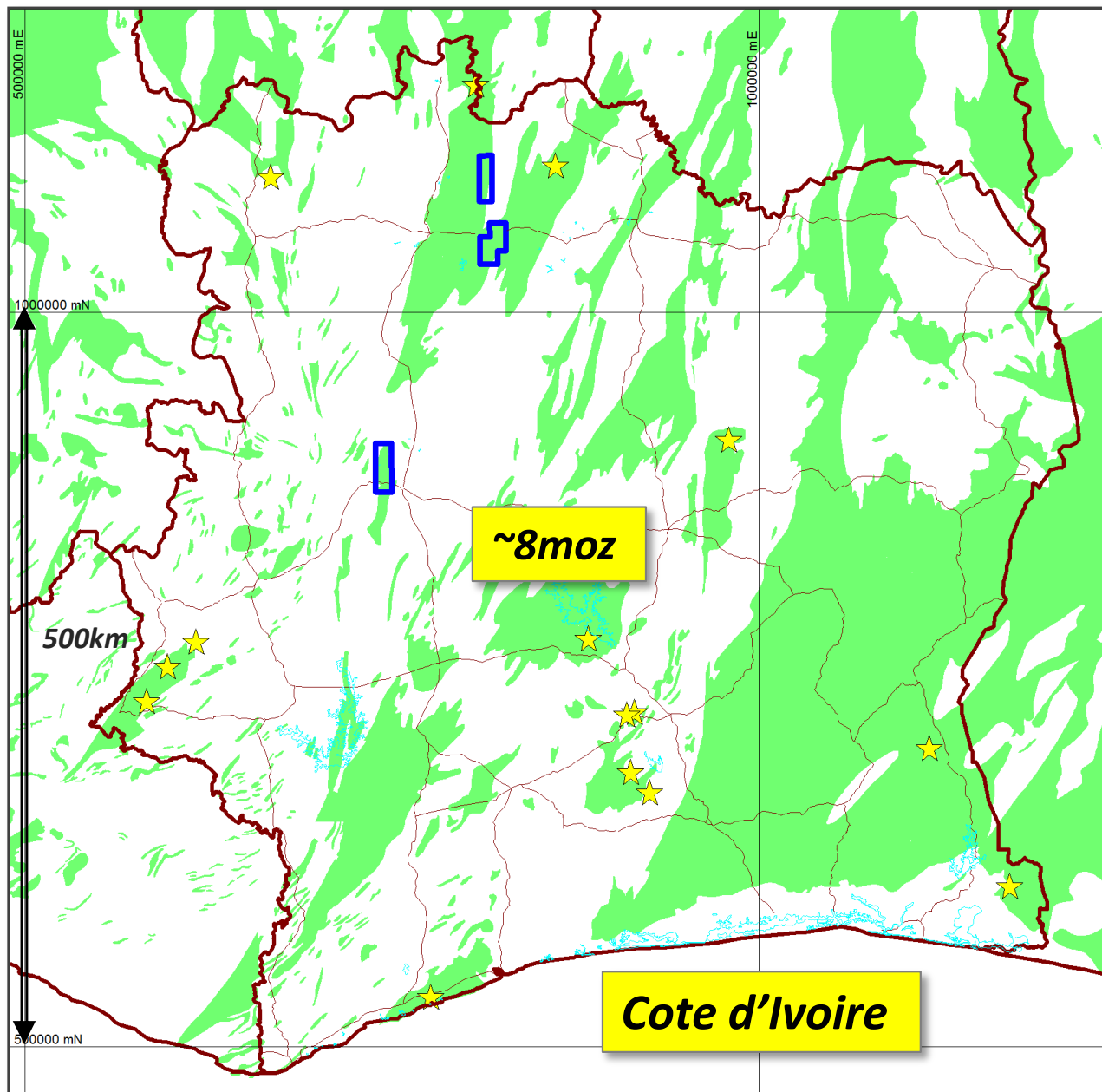


**West African Gold Deposits by Country**

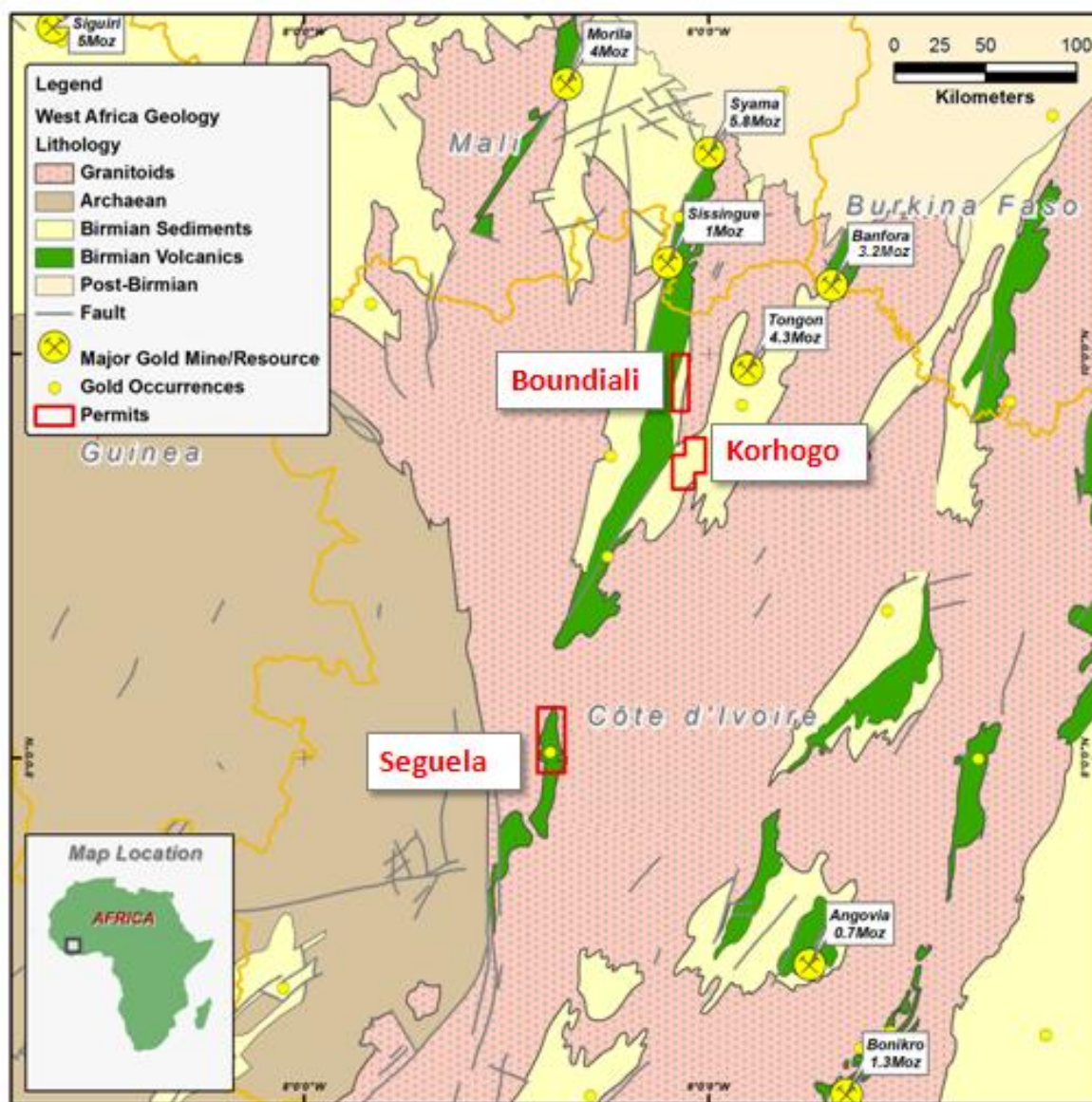
Country	% Birimian	Gold Discovered	% of Gold
<b>Cote d'Ivoire</b>	<b>35%</b>	<b>8 Moz</b>	<b>4%</b>
Burkina Faso	22%	12 Moz	7%
Ghana	19%	110 Moz	62%
Guinea	11%	12 Moz	7%
Mali	10%	33 Moz	19%
Senegal	3%	3 Moz	2%
<b>Total</b>	<b>100%</b>	<b>178 Moz</b>	<b>100%</b>

Source: USGS Minerals Commodities 2009

# Cote d'Ivoire – scale comparison. Untapped potential.



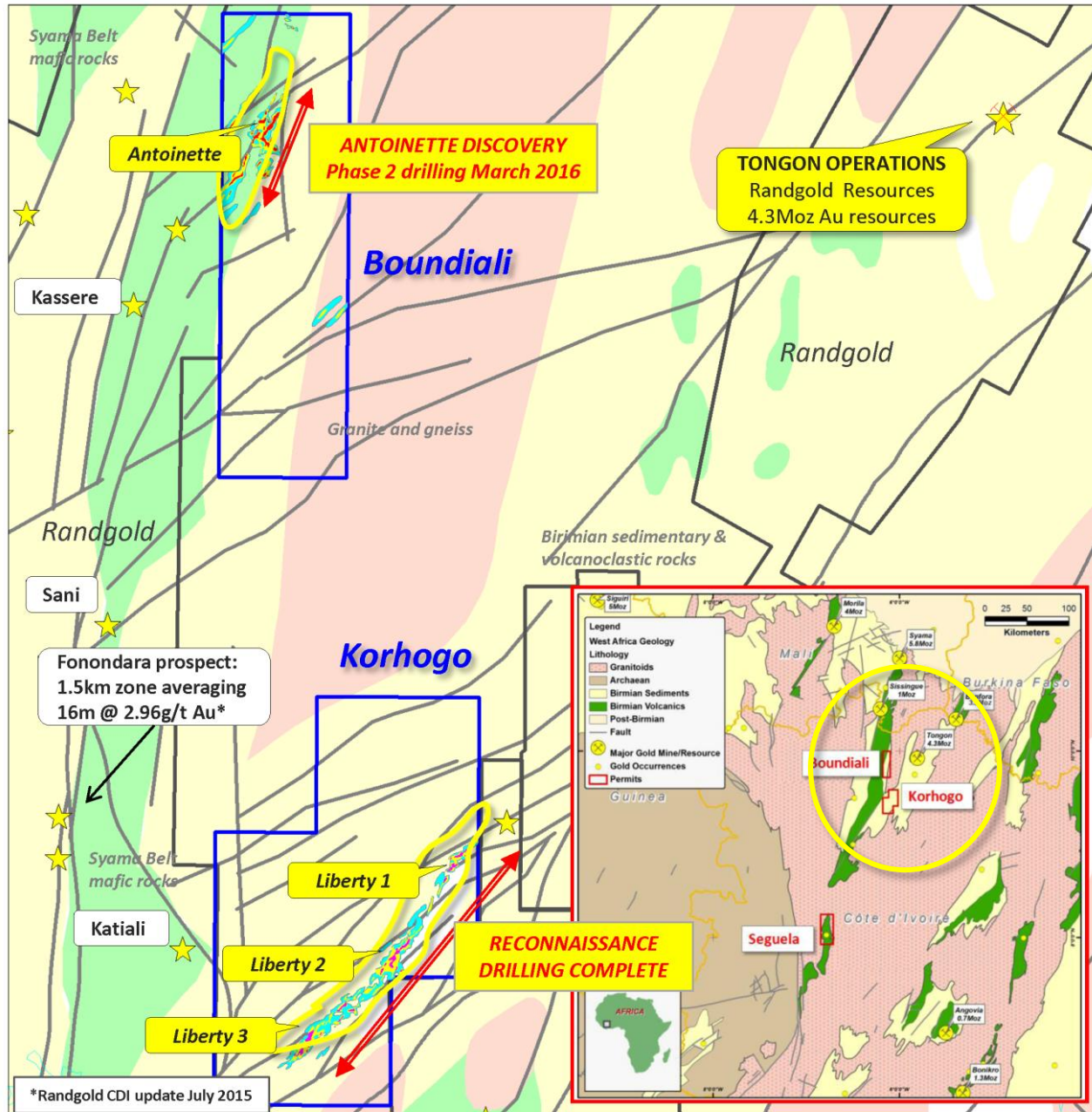
# Cote d'Ivoire Projects



- **1000km<sup>2</sup> high-potential holdings in proven mineralised terrains**
- Three projects in 100% owned subsidiary Aspire Minerals Pty Ltd
- Good access and infrastructure
- New targets emerging each program
- **Strong gold intercepts in 1<sup>st</sup> round drilling at 100% owned Boundiali project**
- 100% owned **Korhogo** project on the 6Moz Banfora-Tongon structural trend, >20km gold anomaly untested
- **Seguela** - 350km<sup>2</sup> strongly mineralised tenure, **Newcrest Option** to purchase signed 2016
- Outstanding gold targets



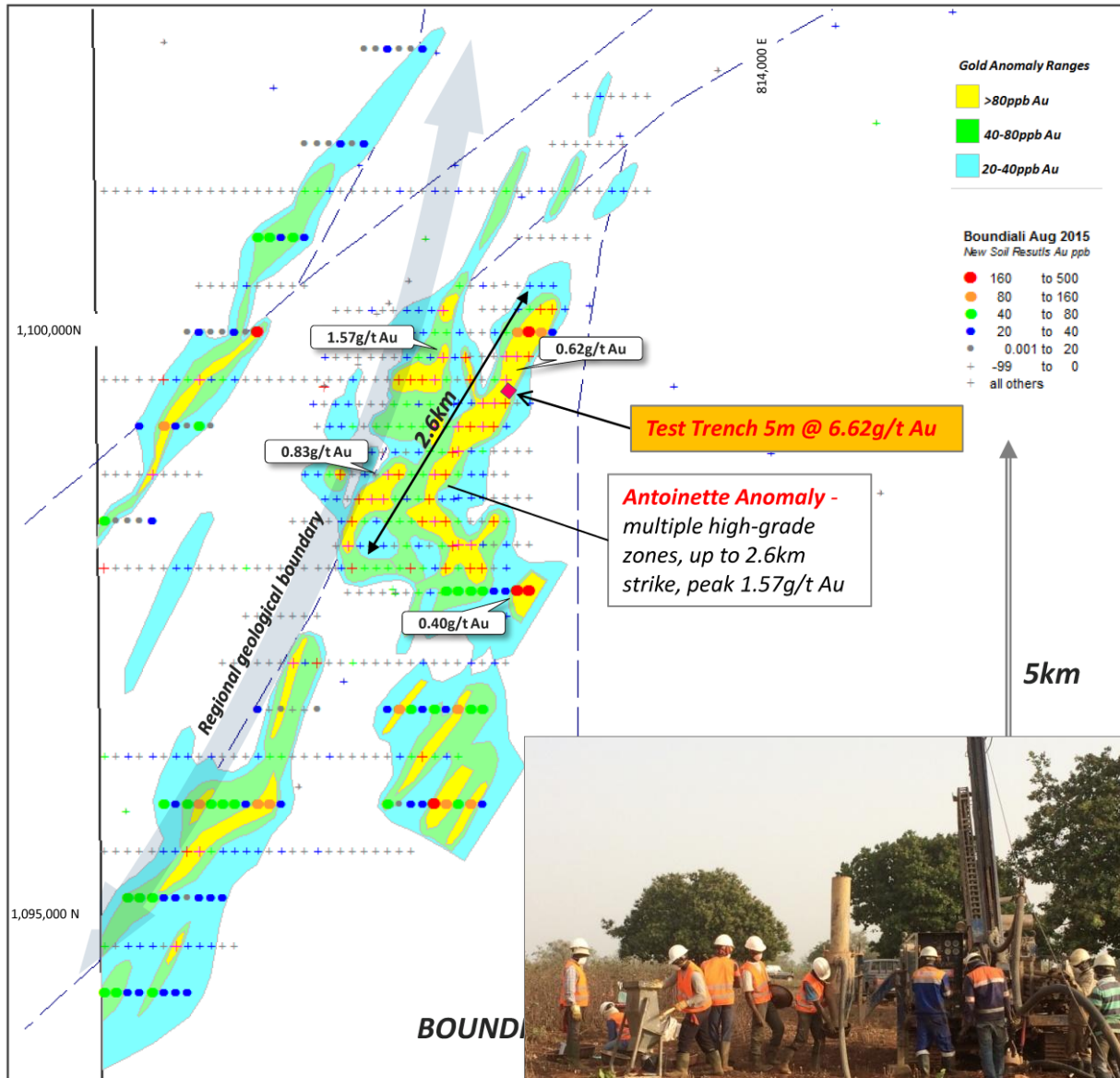
# Northern Permits – live gold systems in prime belts



- **100% owned** through local company Aspire Nord SA
- **Boundiali** permit on regional structure with major gold mineralisation along-trend
- **Excellent 1<sup>st</sup> round aircore results to 20m @ 2.71g/t Au**
- **Korhogo** permit on 6Moz Banfora-Tongon structural trend
- **Strong soil anomalies, ongoing work**
- Active exploration region with new discoveries being made e.g. **Fonondara\*** prospect to west

\*Randgold March 2015 exploration update

# Boundiali Permit – ‘Antoinette’ soil anomaly >6km

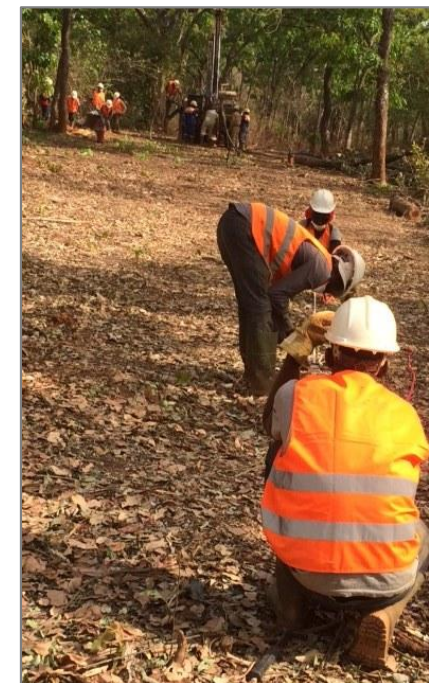
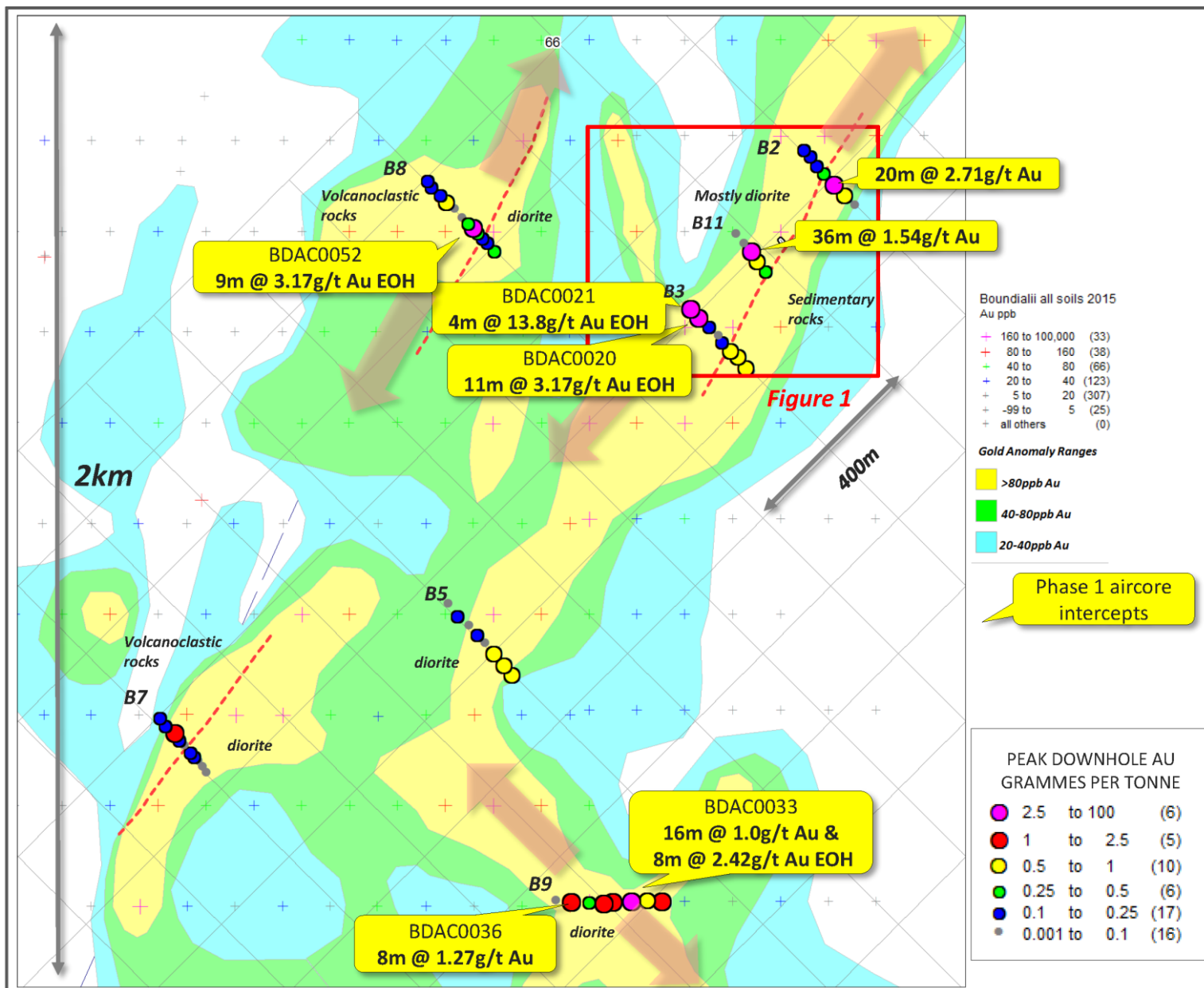


- In strongly-mineralised district, Randgold discoveries along strike
- Soil anomaly were located in first soil programs 2015
- 2.6km x 1km high tenor “Antoinette” old anomaly
- Soil results to 1.57g/t Au
- **Single 5m trench -> 5m @ 6.62g/t**
- 7 traverses first-pass aircore 2016



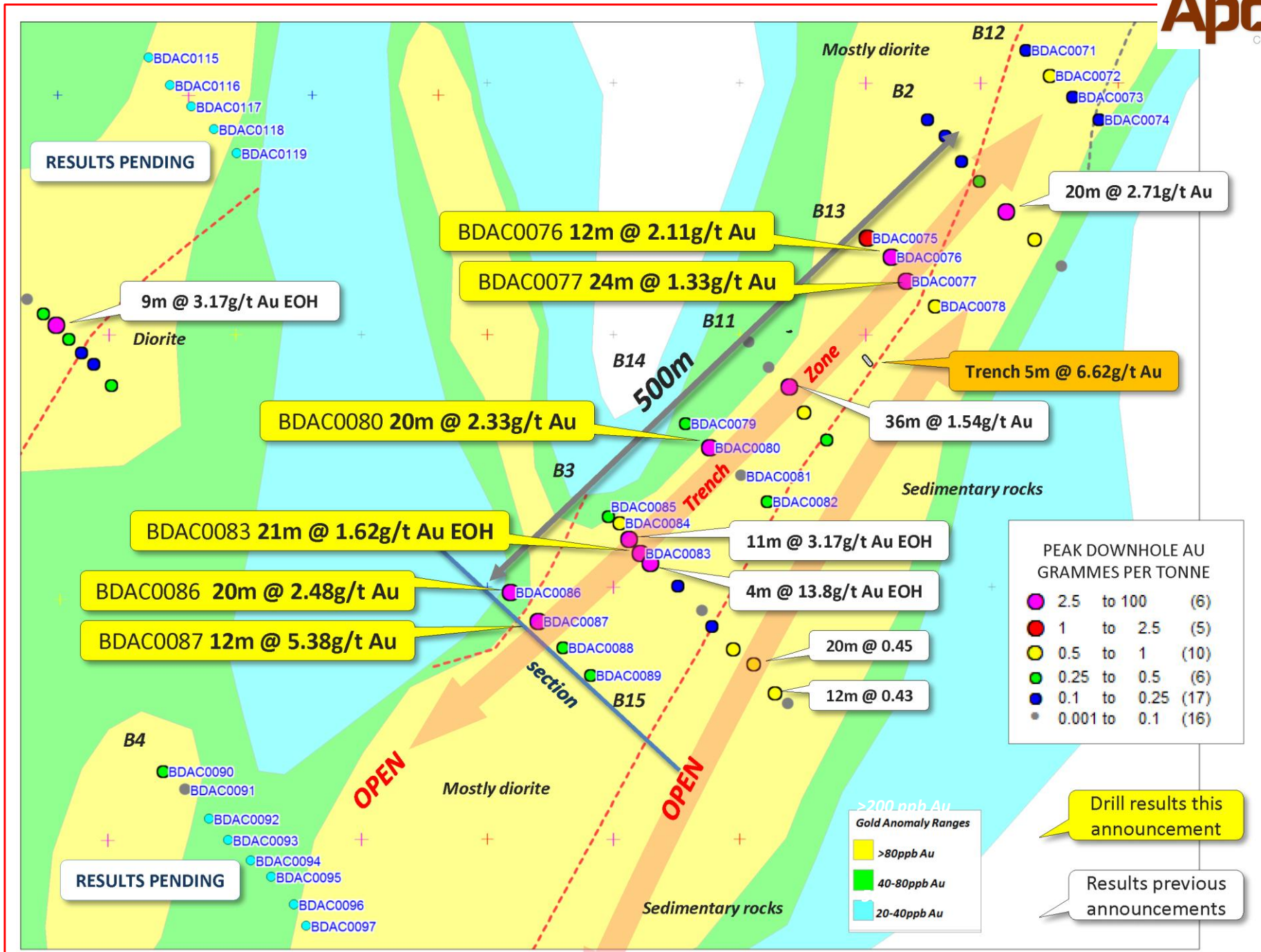
# Boundiali Permit

## Antoinette Phase 1 aircore - opens multiple surfaces

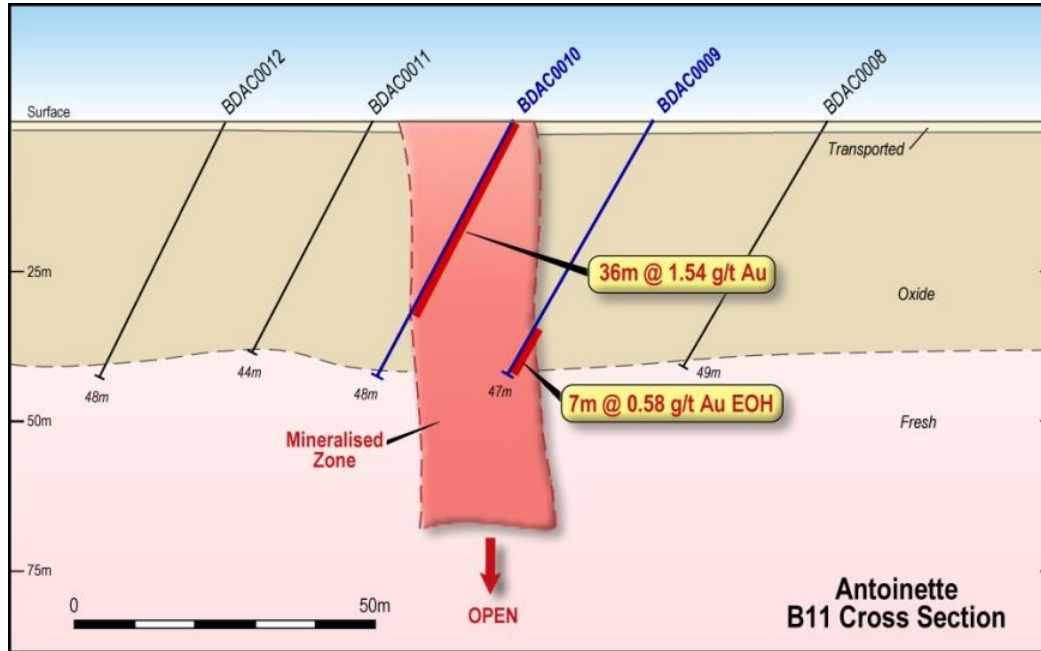




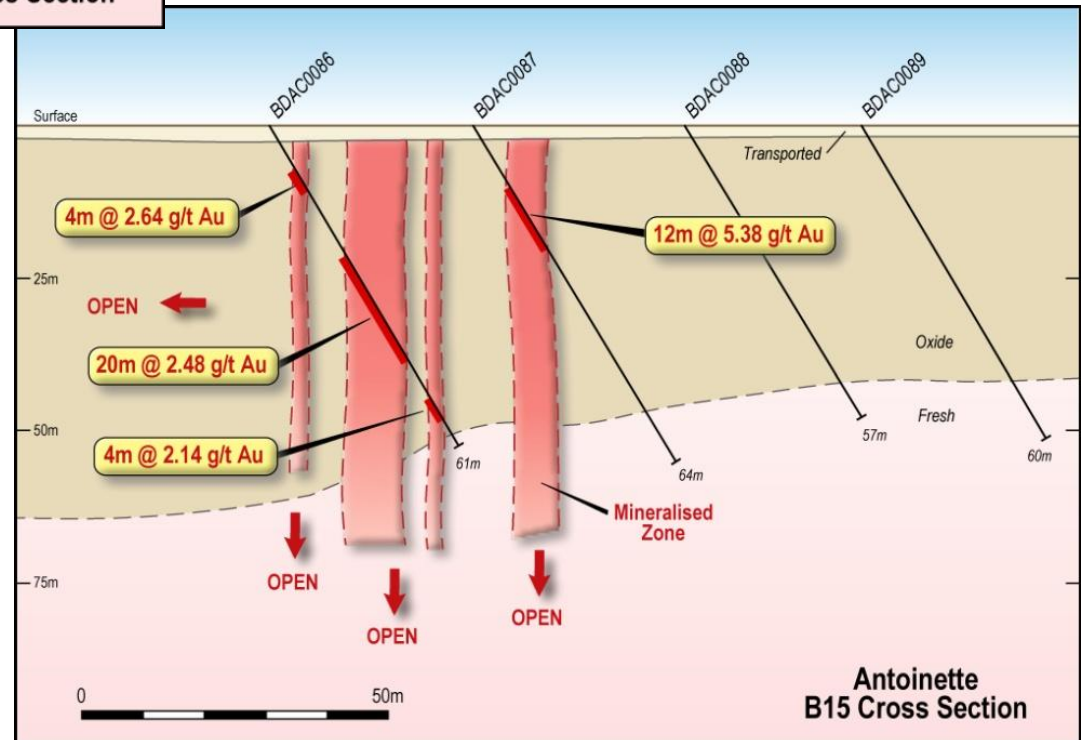
# Antoinette Phase 2 aircore - 'Trench Zone' now >500m



# Trench Zone Geometry

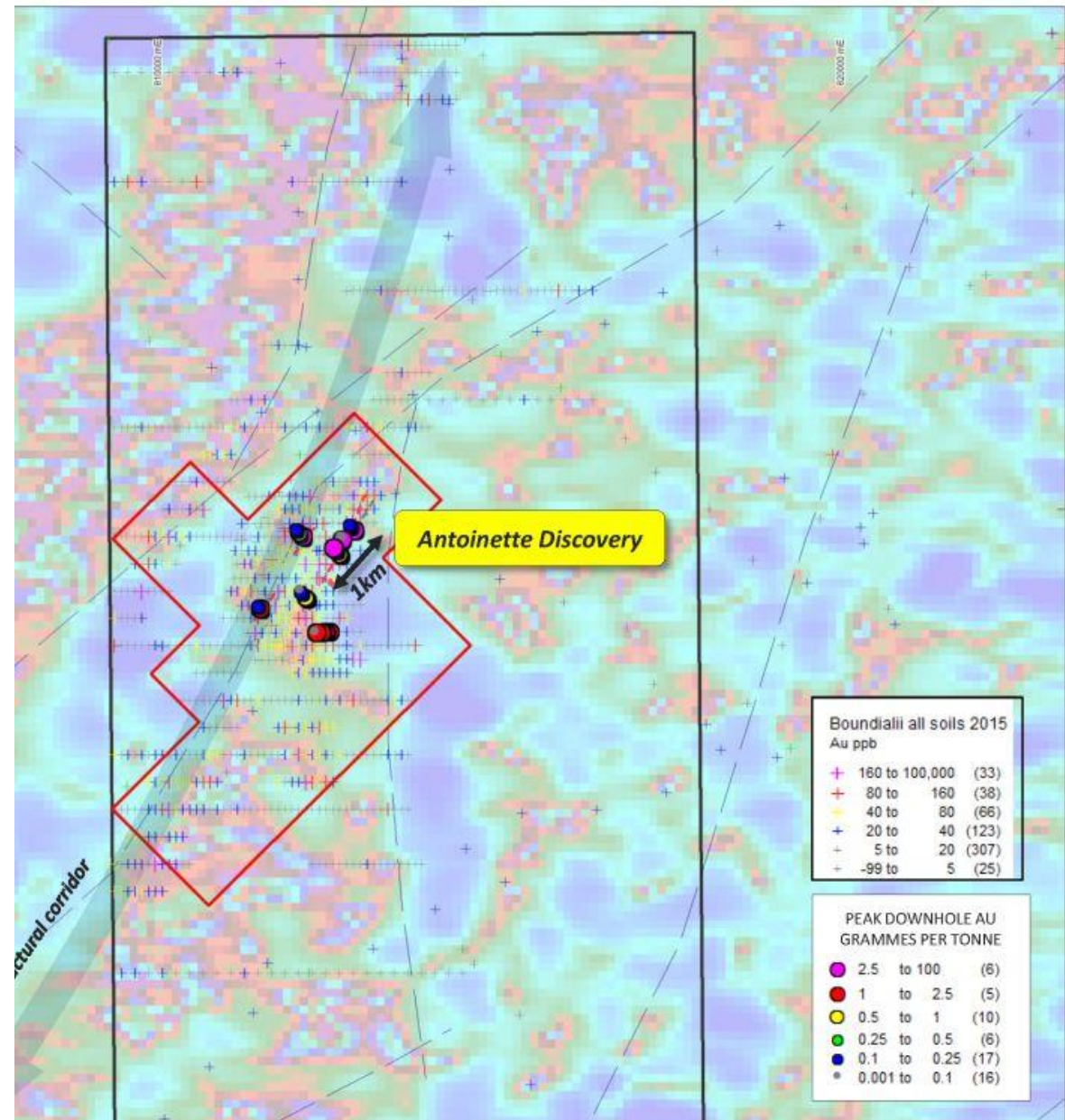


- Continuity over six sections, >500m strike, now RC drill ready
- System open to south and depth
- Oblique structure cutting diorite and fine grained sediments
- Gold reporting to zone of quartz veining in limonitic clays, pyrite alt.



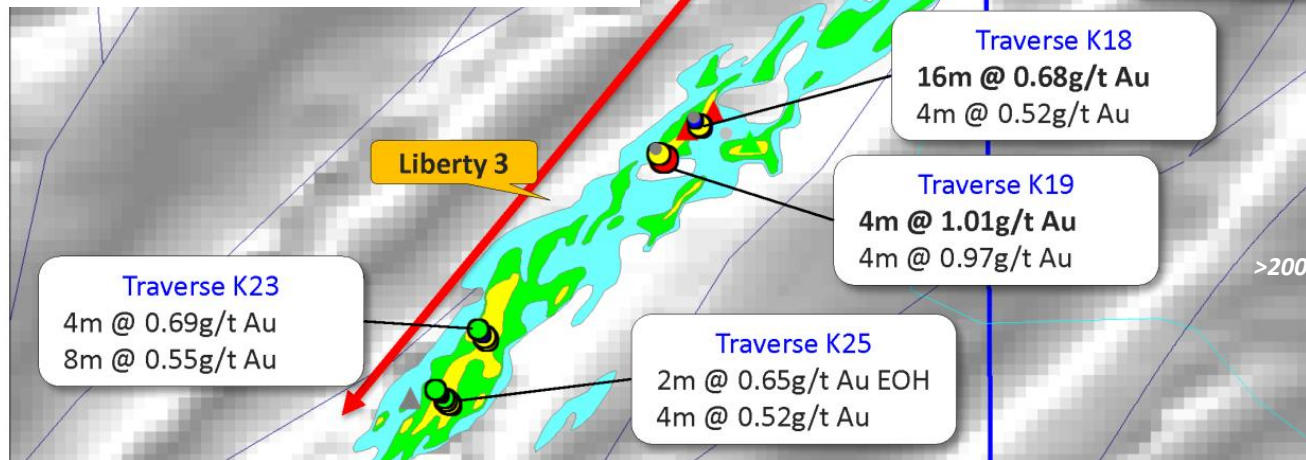
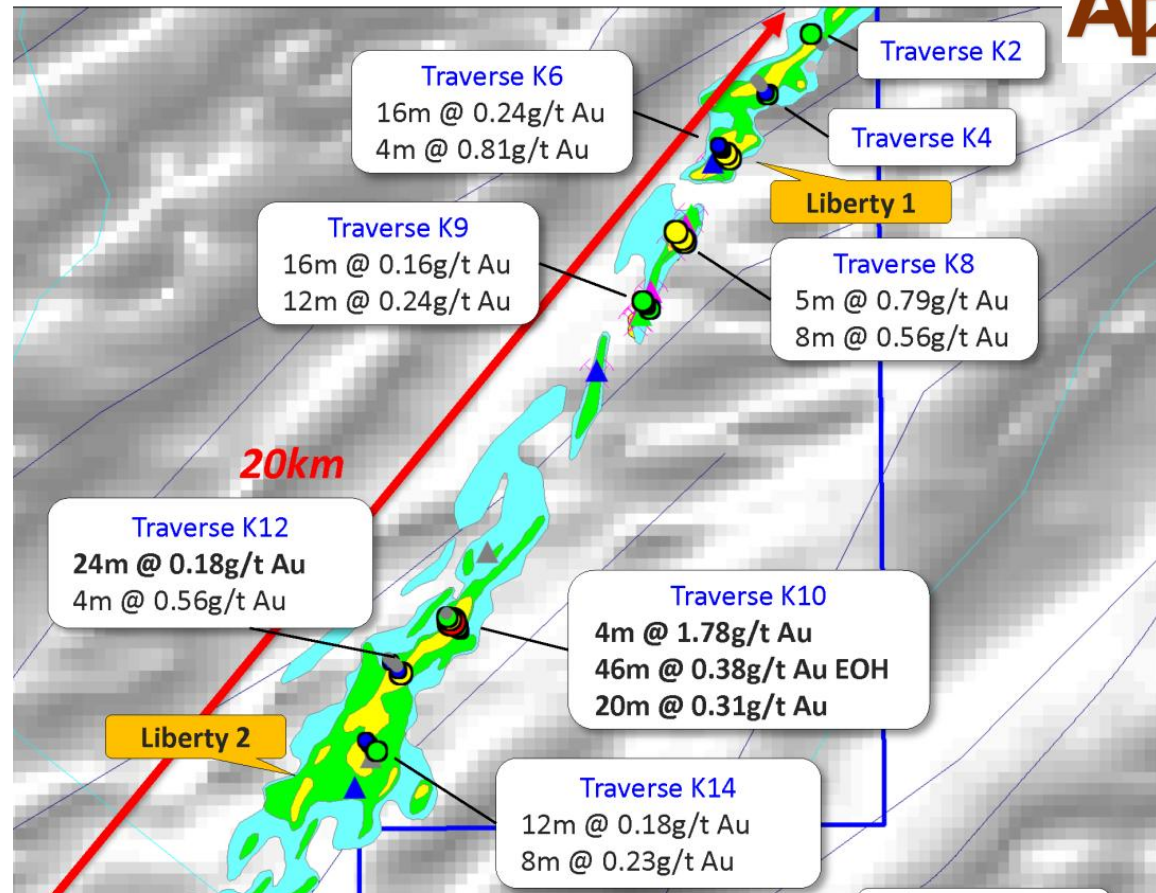
# Antoinette - next steps...

- RC drilling 'Trench Zone' 500m strike, six sections
- Balance of Phase 2 aircore results – pending
- Aircore drilling continued
- Ground magnetic survey – **IN PROGRESS**
- Continued soil sampling - Antoinette south area



# Korhogo Permit – Recce Drilling on a 20km Gold Trend

- 12 fences recce aircore at >800m line spacing
- Strong structural corridor alteration & veining confirmed
- Fertile system 60km from Tongon gold mine
- next step - search for focussed gold zones
- Geophysics to refine targets Liberty 2 and Liberty 3 soil anom.



# Seguela Project – Newcrest Option to Purchase



- Binding Option Agreement Feb 2016
- Option to purchase 100% permit from local holding company MFR (80% AOP)
- Newcrest to explore & maintain permit in good standing over 1-2years

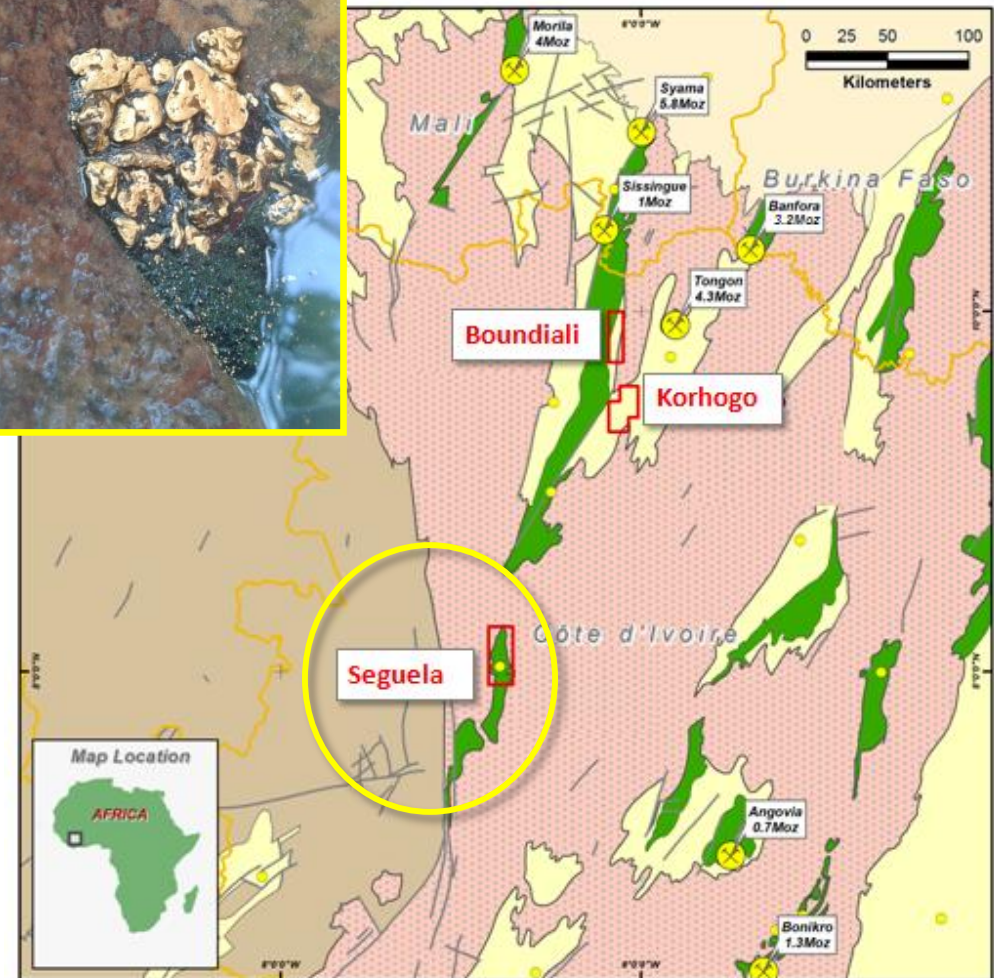
## Fees

- Up to **USD\$1.5M** over 2yr Option

## Payments

- Staged **USD\$3.5M**, final payment on transfer of permit
- Proceeds split 80/20 with JV partner
- **AOP retain 1.2% NSR**, purchasable at market value on decision to mine

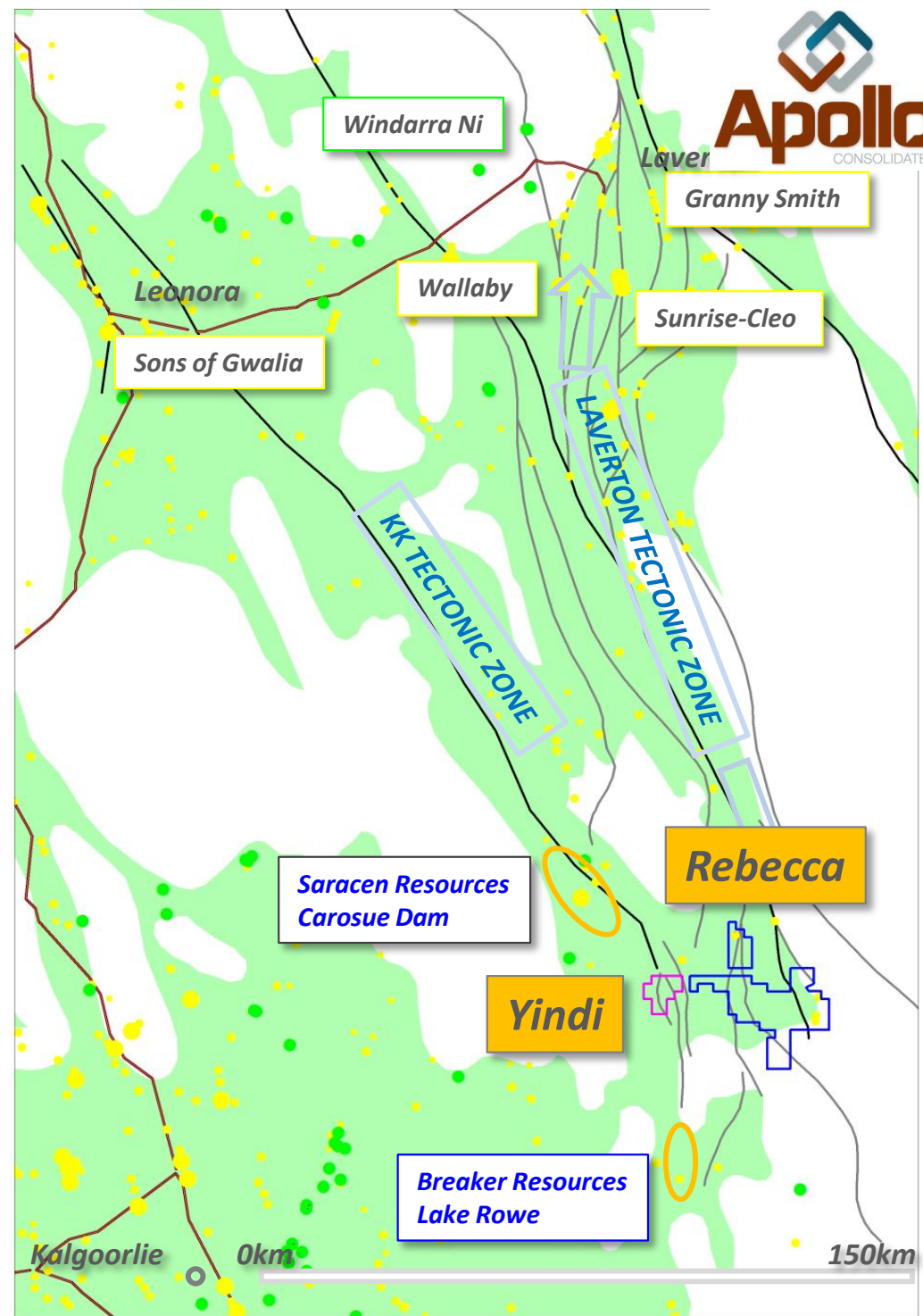
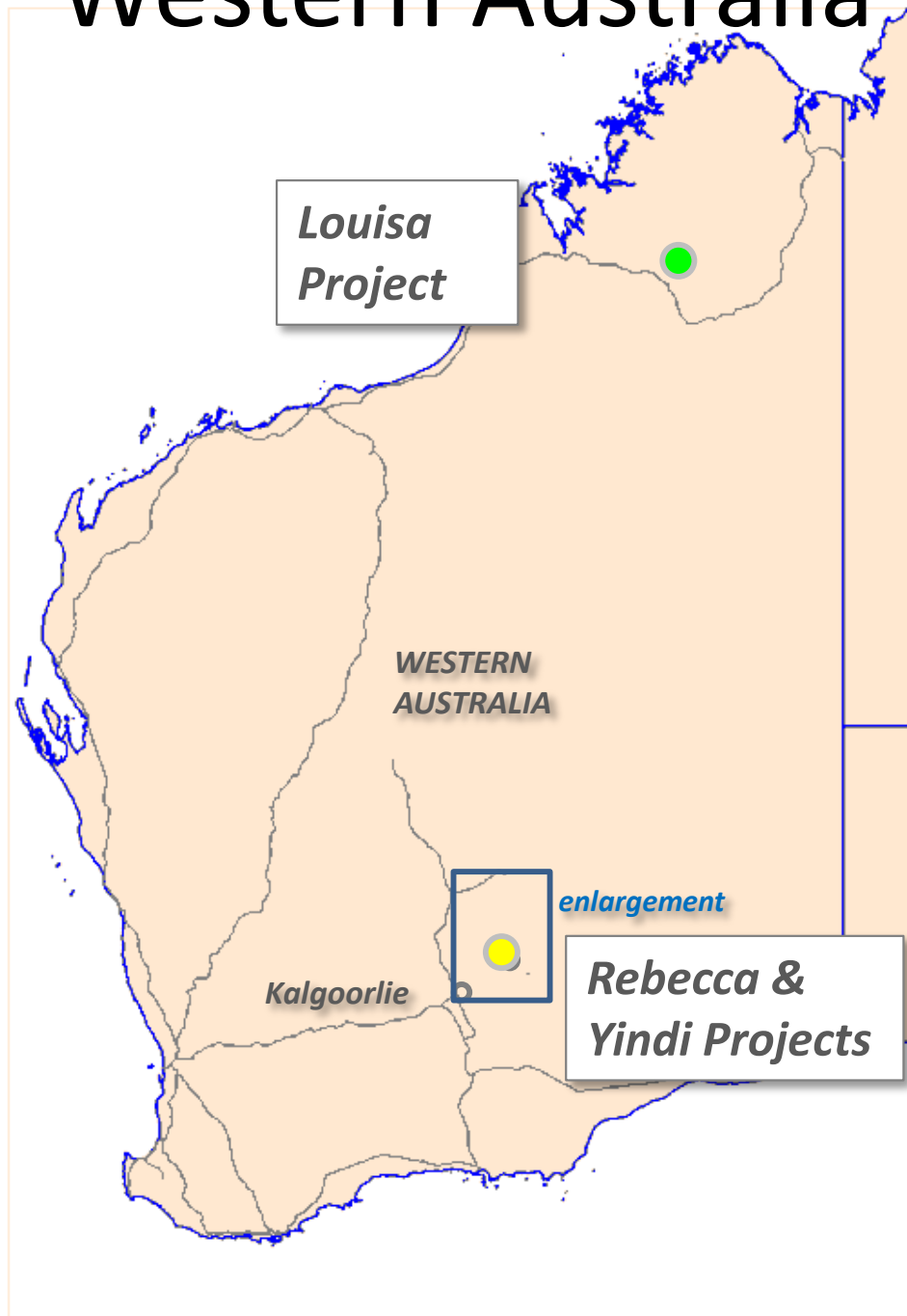
- **Potential staged AUD\$5.7M\* flowing to AOP**



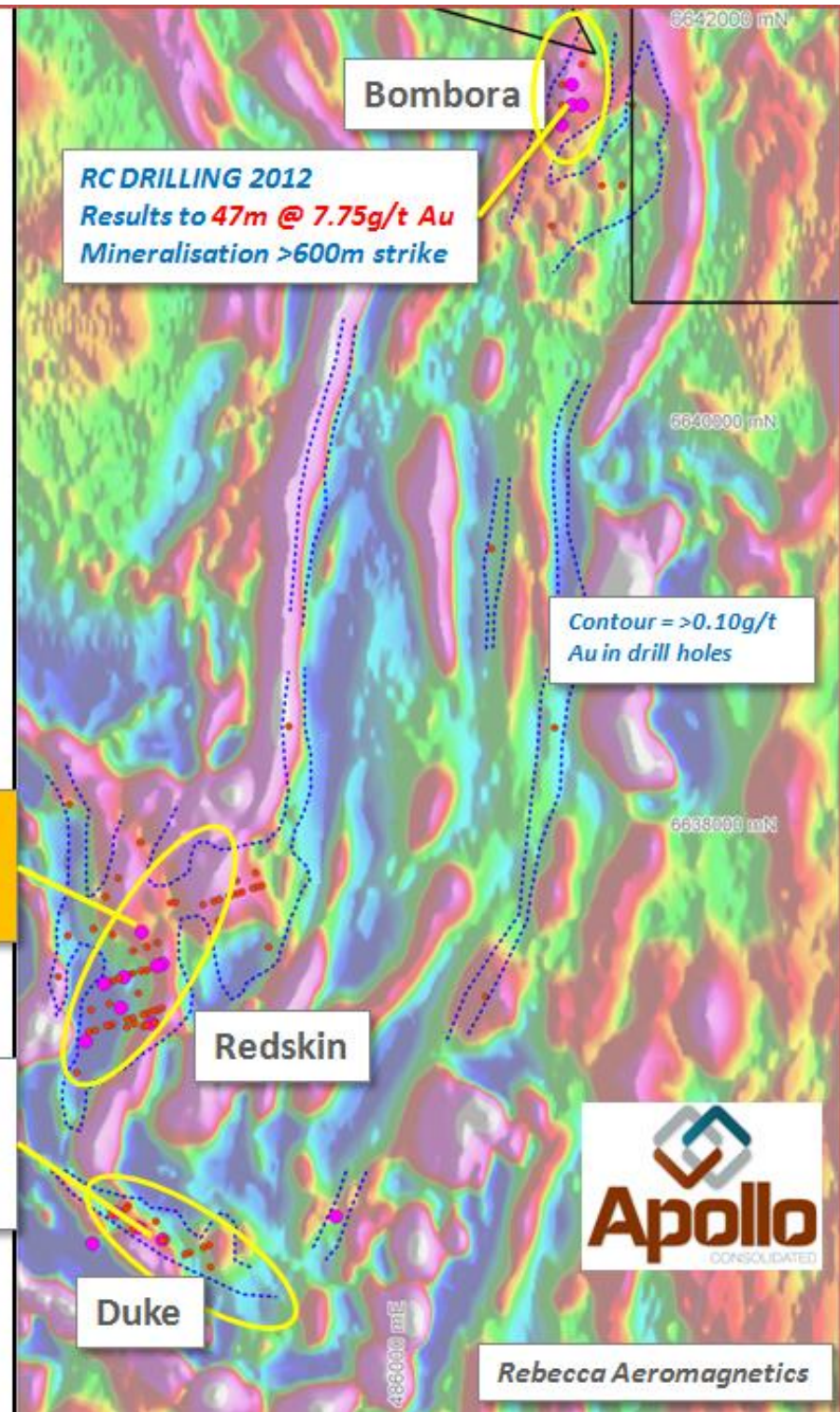
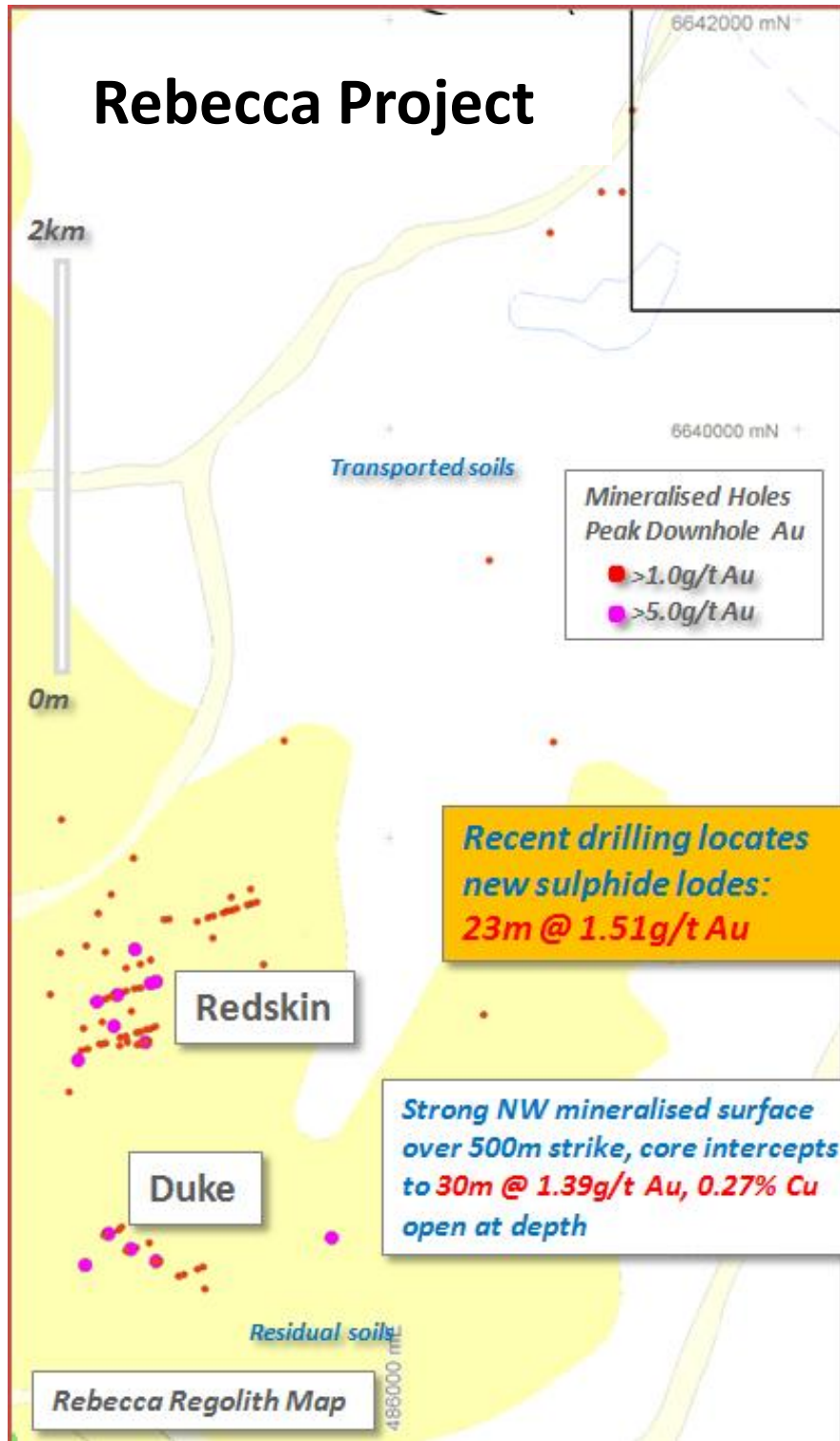
\*pre-tax at \$0.70 USD/AUD

# Gold and Nickel Exploration Projects

## Western Australia



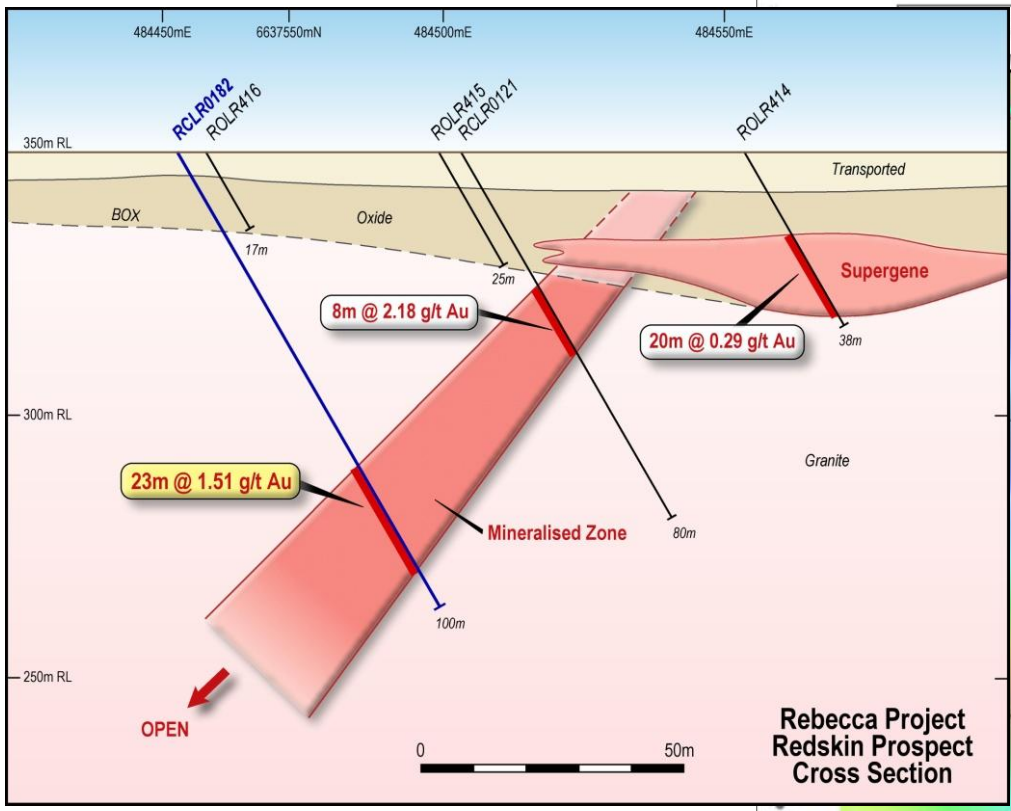
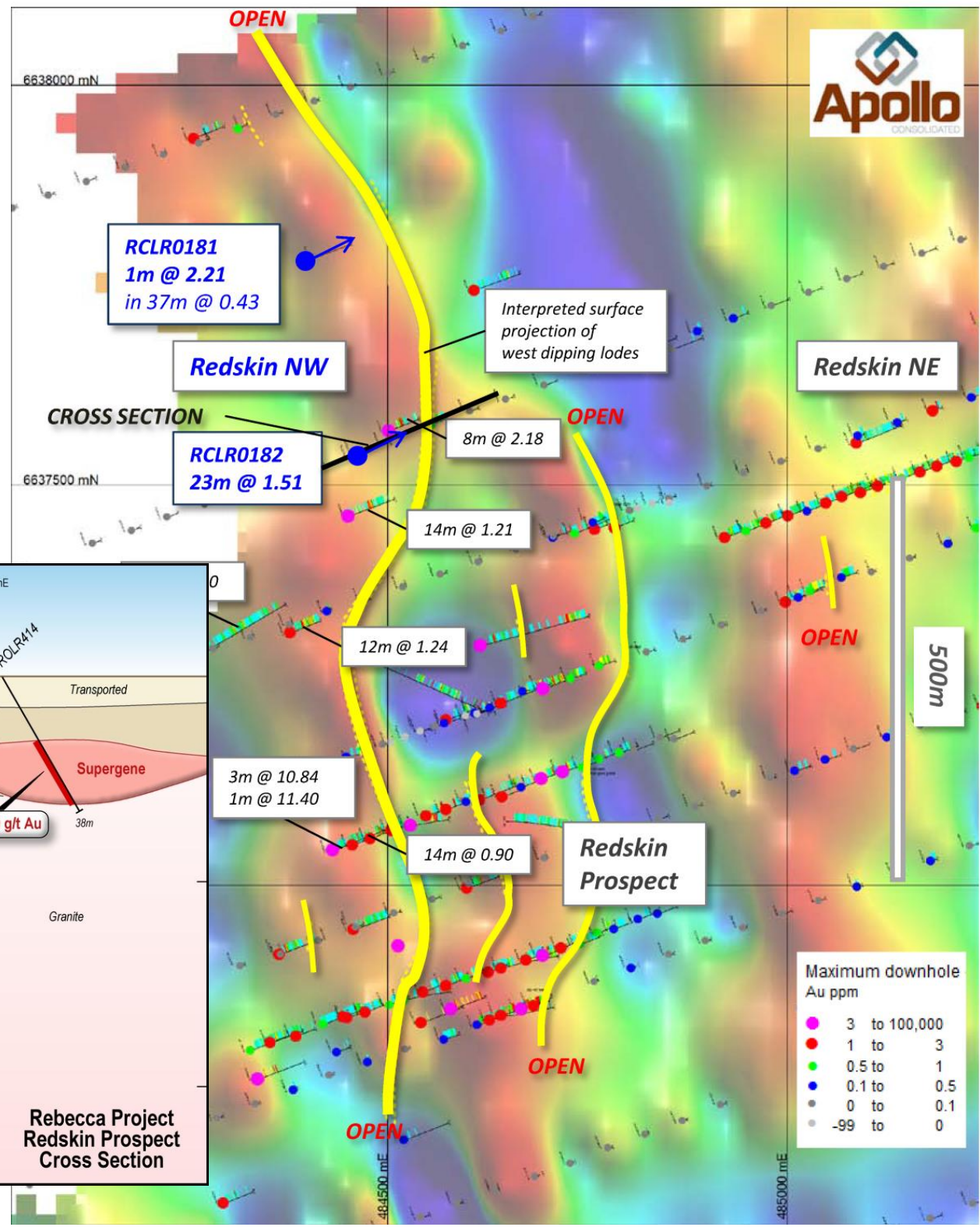
# Rebecca Project



# Redskin

Sept 2015 Drilling

- Strong results:
  - 23m @ 1.51g/t Au**
  - 37m @ 0.43g/t Au**
- New zones emerging >1km
- Open to depth & strike



Maximum downhole Au ppm	
● (Magenta)	3 to 100,000
● (Red)	1 to 3
● (Green)	0.5 to 1
● (Blue)	0.1 to 0.5
● (Grey)	0 to 0.1
● (White)	-99 to 0



# Bombora

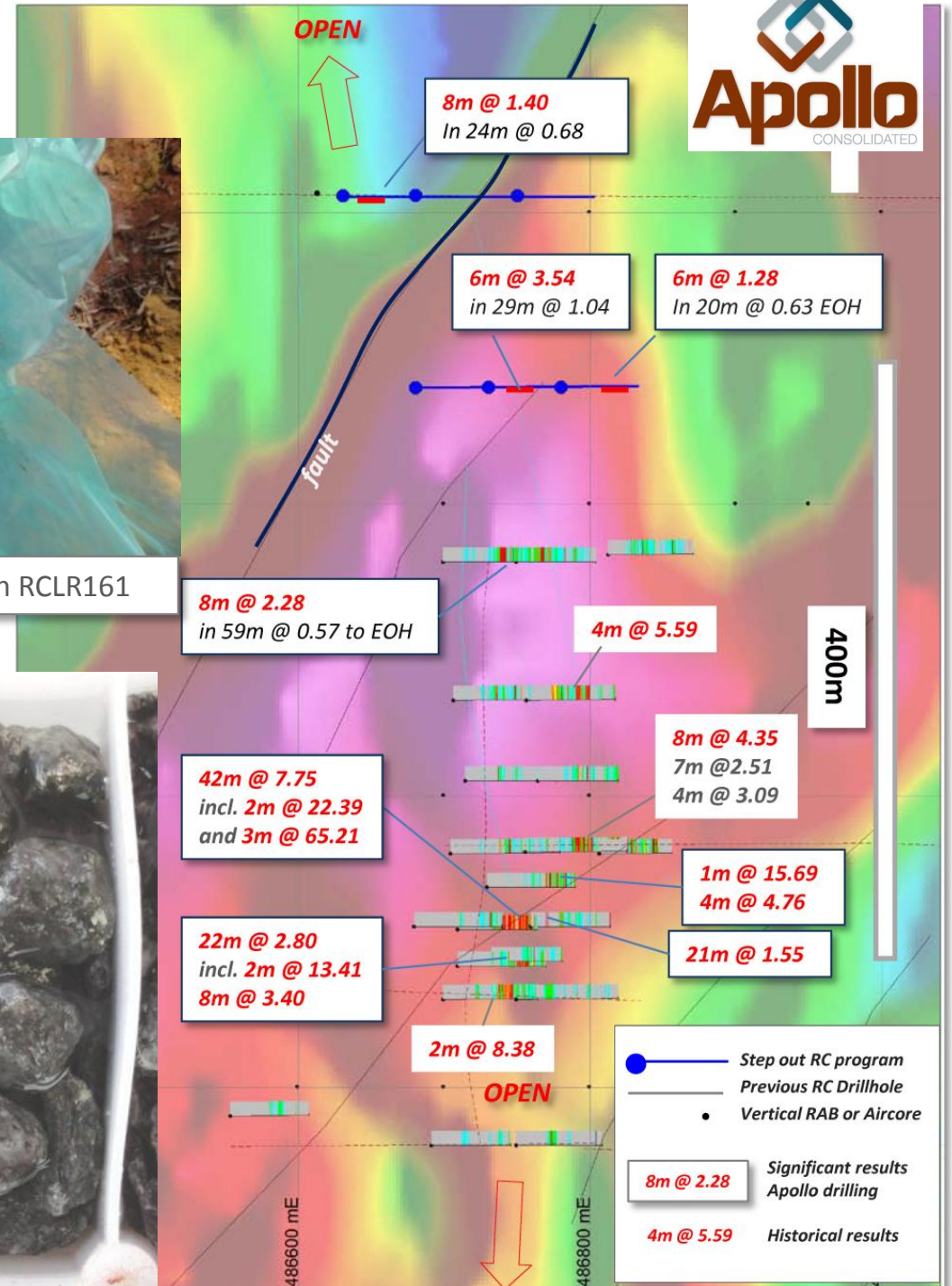
## Apollo RC drilling

- Exceptional results:  
**42m @ 7.75g/t Au**  
*incl 2m @ 22.39g/t Au*  
 & 3m @ 65.21  
**22m @ 2.80g/t Au**



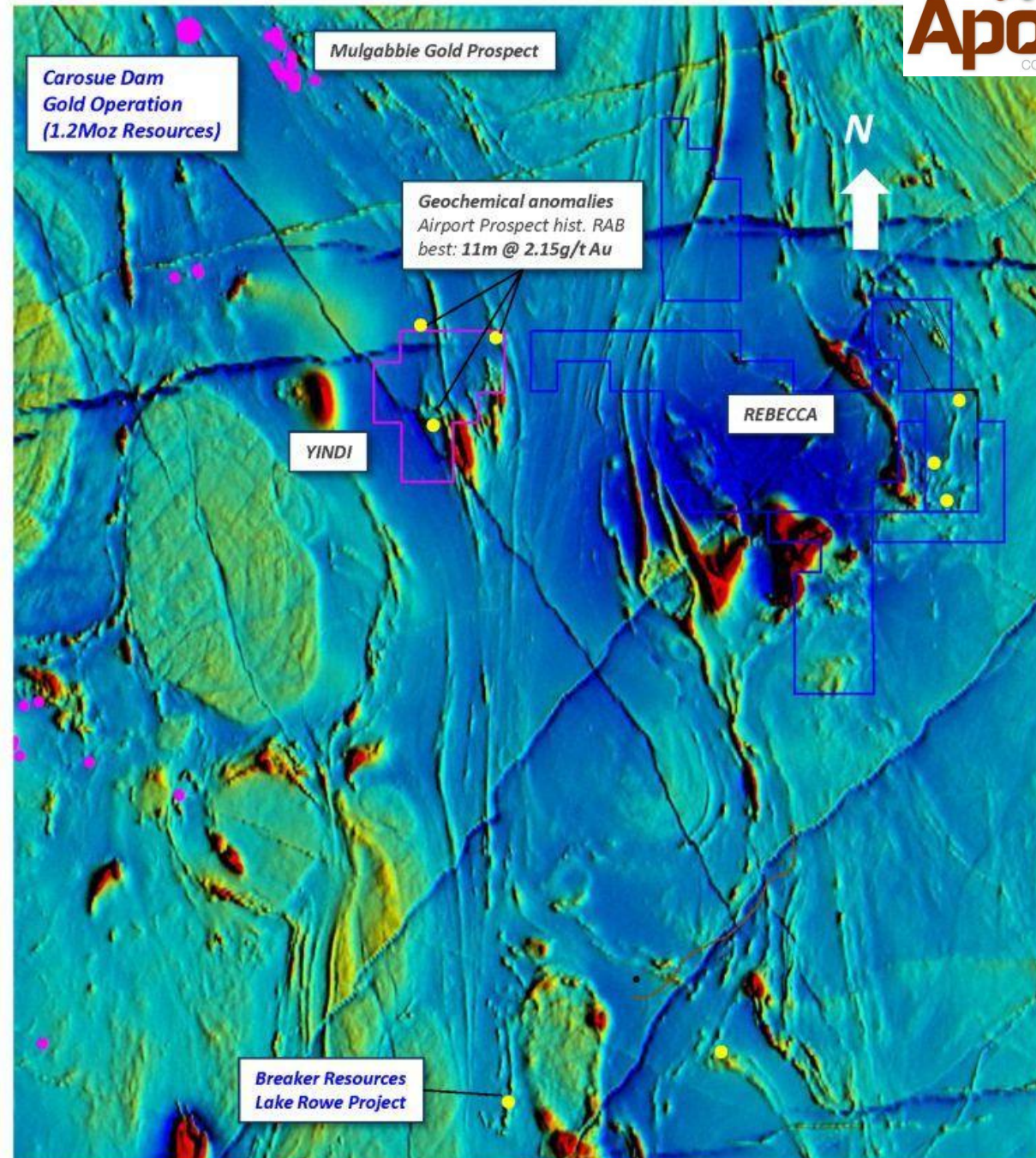
Sulphide rich RC sample in RCLR161

- Strong disseminated sulphide mineralisation
- Mineralisation over 600m strike
- Open to north and depth, south-plunging shoots
- Strike extensions under-drilled in covered terrain
- Resource potential



# Yindi Project

- **Soil-covered structural targets**
- located **between** Carouse Dam gold mine (Saracen Minerals) and Lake Rowe discovery (Breaker Resources)
- Gold anomalism in soils and RAB drilling
- Best historic RC drilling result: **11m @ 2.15g/t Au** in felsic intrusive
- Strike extensions under-drilled in covered terrain
- **First-pass aircore planned for mid 2016**



# Gold Exploration programs and news flow



## Cote d'Ivoire

- **Boundiali** – infill and extensional drilling to continue at **Antoinette discovery**
  - **Korhogo** – First stage aircore complete. Geophysical survey pending
  - **Korhogo & Boundiali** – ongoing regional soil sampling – results as received
  - **Seguela**- Newcrest option, fees payable
  - **Opportunities** to add to Ivorian gold portfolio
- 

## Western Australia

- **Rebecca Gold Project** – RC follow-up 43m @ 7.75g/t Au, 23m @ 1.51g/t Au
- **Yindi** - First phase aircore Q2 2016



# Capital Structure and Board

ASX – AOP	Securities	Market Cap	Cash	Enterprise Value
Stock Price <b>AUD \$ 0.08</b>	(million)	(million)	(million)	(million)
<b>Total</b>	<b>107.4</b>	<b>AUD \$8.6</b>	<b>AUD \$1.4*</b>	<b>AUD \$7.2</b>

\* est balance at Sept Q 2015

Performance Shares	7.5**
Unlisted Options	29.8    Exercise price 7.5c (1.5m) and 5c (28.3m)
Management Options	25.5    Exercise price 20c (15m) and 5c (10.5m)

Board	19%
Backers	41%
Major Shareholders	Mr Yi Weng 16%
	Geoff Harris 11%

**Roger Steinepreis** *Chairman*. Lawyer and Chairman of Perth based firm, Steinepreis Paganin

**Nick Castleden** *Executive Director*. Geologist >20 years experience in mineral exploration and development with Mt Isa Mines, Perilya Mines, MPI Mines, LionOre, Breakaway Resources, Verona Capital.

**Robert Gherghetta** *Non-executive Director*. CA with over 20 years experience in natural resources, public practice and investment banking

**Stephen West** *Non-Executive Director*. CA with over 20 years of financial and corporate experience gained in public practice, oil and gas, mining and investment banking spanning Australia, United Kingdom, Europe, CIS and Africa

**George Ventouras** *Non-executive Director*. Over 20 years experience in Marketing and Corporate fields



## Why invest in Apollo:

- ✓ **Côte d'Ivoire** has all the right ingredients, is underexplored and will deliver more commercial gold discoveries
- ✓ **KORHOGO** and **BOUNDIALI** permits are on key multi-million ounce structural trends and have exciting early stage gold anomalies
- ✓ **ANTOINETTE** - discovery in first-phase of drilling, **infill & extensional drilling continues**
- ✓ **SEGUELA**- Newcrest deal provides funding for exploration
- ✓ **REBECCA**- RC drilling to continue on Redskin & Bombora gold systems
- ✓ **Cost-efficient and focussed exploration culture.** Experienced board backed by patient capital. New opportunities constantly reviewed
- ✓ **Well positioned to participate in re-rating of West African gold assets**

