

## ASX Code: AIV

### Issued Capital

646,812,672 ordinary shares (AIV)  
1,100,000 unlisted options

### Market Capitalisation

\$11.644M (18 April 2016, \$0.018)

### Directors

Min Yang (Chairman, NED)  
Grant Thomas (Managing Director)  
Geoff Baker (NED)  
Dongmei Ye (NED)  
Craig McPherson (Company Secretary)

## About ActivEX

ActivEX Limited is a Brisbane based mineral exploration company committed to the acquisition, identification and delineation of new resource projects through active exploration.

The ActivEX portfolio is focussed on copper and gold projects, with substantial tenement packages in north and southeast Queensland and in the Cloncurry district of northwest Queensland.

The Company also has an advanced potash project in Western Australia where it is investigating optimal leaching methods for extraction and production of potash and by-products.

Suite 3402, Level 34 Riverside Centre  
123 Eagle Street  
BRISBANE QLD 4000  
PO Box 1533 MILTON QLD 4064

[admin@activex.com.au](mailto:admin@activex.com.au)  
[www.activex.com.au](http://www.activex.com.au)

Phone +61 (07) 3236 4188

ABN 11 113 452 896

## ACTIVITIES REPORT QUARTER ENDED 31 MARCH 2016

Brisbane-based gold and copper explorer ActivEX Limited (ASX: AIV) ("ActivEX" or "the Company") provides the following summary of activities undertaken during the quarter ended 31 March 2016.

### Summary and Highlights

- **Reconnaissance portable XRF soil geochemical surveys completed over target areas in Mt Hogan EPM identify new gold prospects, Dorado, Burrow, Moon Hill, Show, Margaret, Gully and Camp (untested by drilling).**
- Focused rock chip sampling at prospects returned very high grade gold and silver assays; including
  - Percy Queen/Long Lode - up to 144g/t Au and 6,480g/t Ag.
  - Mountain Maid – up to 85g/t Au and 509g/t Ag.
  - Show – up to 14.95g/t Au and 837g/t Ag.
  - Independence - up to 97.6g/t Au and 659g/t Ag.
  - Camp – up to 22.6g/t Au and 13.6g/t Ag.
- Orientation portable XRF soil geochemical survey completed over Mt Hogan abandoned gold mine - characterises surface geochemical responses.
- Exploration activities for 2016 field season commenced at Gilberton and Ravenswood Gold Projects.
- ActivEX anticipates that drill programs will be completed over the best gold targets within the Gilberton and Ravenswood Gold Projects in mid to late-2016.
- At the end of the March quarter the Company held \$0.340M in cash at bank. The Company is considering a Rights Issue during the next quarter to raise funds. The funds will be utilised to pursue on-going exploration activity by ActivEX as well as to meet working capital requirements.

## OVERVIEW

### Gilberton and Ravenswood Gold Projects

During the quarter ActivEX announced that reconnaissance portable X-Ray Fluorescence (pXRF) soil geochemical surveys were completed over target areas in Mt Hogan EPM (18615) including the area immediately adjacent to the abandoned Mt Hogan gold mine, identifying gold prospects, Dorado, Burrow, Moon Hill, Show, Margaret, Independence, General Gordan, Gully and Camp (see ASX announcements 18 January and 3 February 2016). Orientation pXRF soil geochemical surveys were also carried out over the Mt Hogan mine area to aid in the characterisation of ground soil geochemical anomalies over known high grade gold mineralisation.

Attendant rock chip samples have been assayed returning exceptionally high grade gold and silver assays, including:

- Percy Queen/Long Lode - up to 144g/t Au and 6,480g/t Ag
- Mountain Maid – up to 85g/t Au and 509g/t Ag
- Show – up to 14.95g/t Au and 837g/t Ag
- Independence - up to 97.6g/t Au and 659g/t Ag
- Camp – up to 22.6g/t Au and 13.55g/t Ag

During the quarter ActivEX exploration activities for the 2016 field season commenced at Gilberton Gold Project with portable X-Ray Fluorescence (pXRF) soil geochemical surveys and rock chip sampling over an area immediately northeast of the abandoned Mt Hogan gold mine (see ASX announcement 31 March 2016). This survey extends the current pXRF coverage over Mt Hogan gold mine site (abandoned circa 1996) which identified the Independence, General Gordan, Gully and Camp gold prospects (see ASX announcement 3 February 2016). During this most recent phase of exploration 52 rock chip samples were collected (majority quartz veins or gossanous outcrop) and submitted for assay. To date the rock chip samples have been assayed for gold only and returned high grades to a maximum of 106 g/t Au (20% of samples returning values >1g/t Au).

During the quarter exploration activities for the 2016 field season commenced at Ravenswood Gold Project with rock chip sampling over several known prospects within the King Solomon and Birthday Hills EPMS. A total of 37 rock chip samples were collected (majority quartz veins or gossanous outcrop) and submitted for assay (see ASX announcement 31 March 2016). To date the rock chip samples have been assayed for gold only and have returned very high grades to a maximum of 370 g/t Au (over 70% of samples returning values >1g/t Au).

ActivEX anticipates that drill programs will be completed over the best gold targets within the Gilberton and Ravenswood Gold Projects in mid to late-2016.

No Occupational, Health and Safety or lost time injuries occurred during operations for the quarter.

## CORPORATE

ActivEX is considering a Rights Issue during the next quarter to raise funds. The funds will be utilised to pursue on-going exploration activity by ActivEX as well as to meet working capital requirements.

## FINANCIAL

At the end of the March quarter the Company held \$0.340M in cash at the bank.

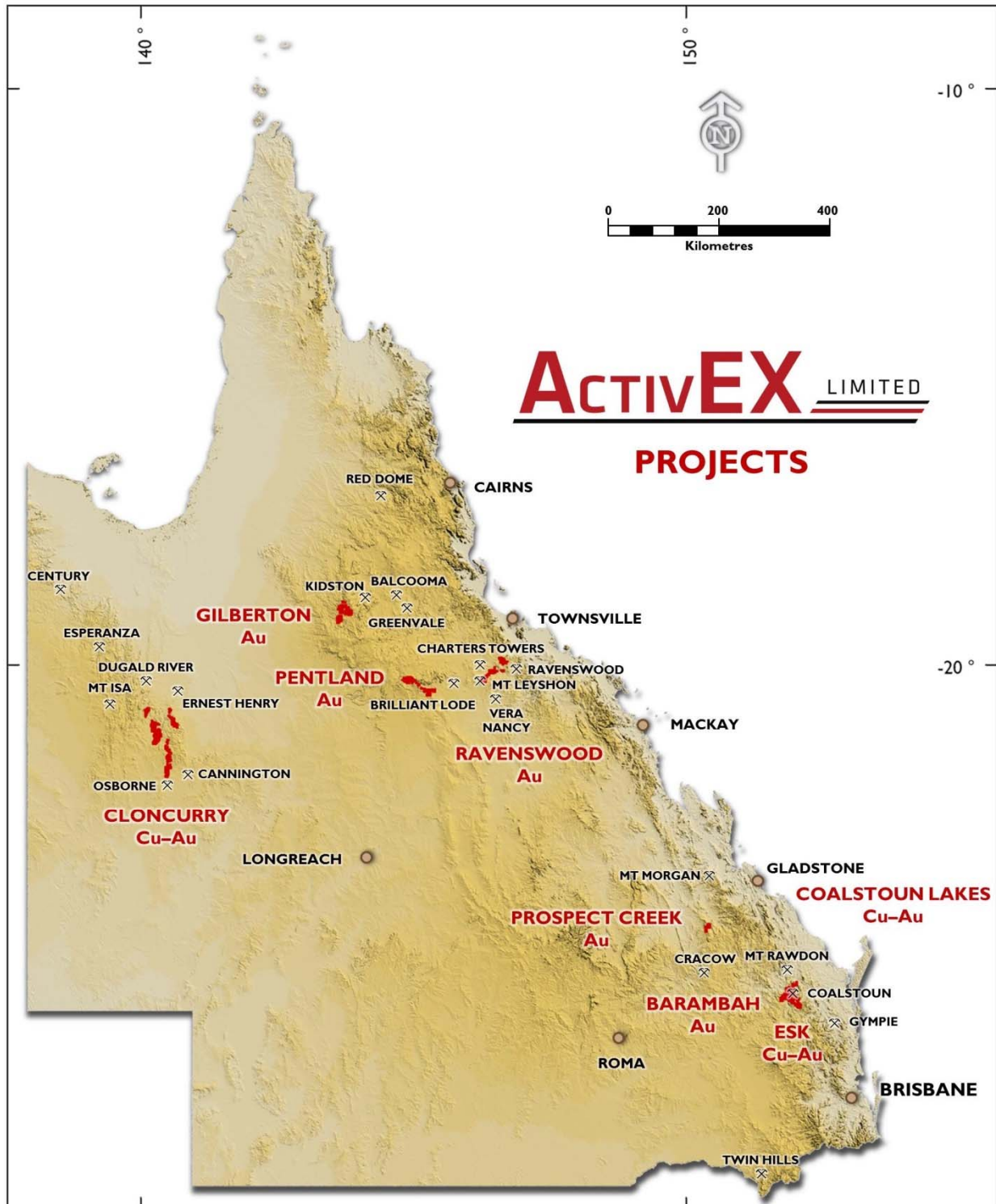


Figure 1. ActivEX Limited Queensland Projects

## OPERATIONS

### GILBERTON GOLD PROJECT – North Queensland

(EPM 18615, 18623 and 19207 – ActivEX 100%, refer Appendix 2)

The Gilberton Gold Project is situated in the Georgetown Province in northeast Queensland, approximately 300km west-northwest of Townsville (Figure 1). The Project consists of EPMs 18615, 18623 and 19207, which comprise a total of 143 sub-blocks and encompass an area of 464km<sup>2</sup>. ActivEX Limited holds 100% interest in all the tenements.

The Project is located in an area which is prospective for a number of metals and a wide range of deposit styles. The world-class Kidston breccia hosted Au-Ag deposit occurs in similar geological terrain approximately 50km to the northeast (Figure 1).

During the quarter ActivEX announced that reconnaissance portable X-Ray Fluorescence (pXRF) soil geochemical surveys were completed over several priority target areas in the Mt Hogan tenement (EPM 18615, Gilberton Gold Project, Figure 2), identifying new gold prospects Dorado, Burrow, Moon Hill, Show and Margaret (see ASX announcement 18 January 2016, Figures 2-4). Follow-up and infill pXRF surveys were also completed over Homeward Bound and Josephine areas (Figures 3 and 4) and have clearly defined previously identified gold prospects Mountain Maid, Ridge and Isabella (see ASX announcement 30 September 2015, Figures 2-4). Initial pXRF surveys covered known gold prospects Percy Queen and Percy River. Portable XRF surveying comprised a total of 1,873 readings acquired on east-west traverses spaced 50-200m with a nominal reading interval of 50-200m.

During this phase of field work 126 rock chip samples were collected (majority quartz veins or gossanous outcrop) and submitted for assay. The rock chip samples have been assayed and returned exceptionally high gold grades with over 20% of samples returning values >1g/t Au (16 samples, Figure 5). Results include:

- **Percy Queen/Long Lode** area (historic prospect) best assays in the range 2.02 to 144.0g/t Au and 33.8 to 6,480g/t Ag. Percy Queen/Long Lode area requires detailed field follow-up during the next phase of exploration activities.
- **Mountain Maid** best assays 3.26 to 85.0g/t Au, 44.0 to 509.0g/t Ag, 3.0% to 5.3% Cu and up to 5.3% Pb.
- **Margaret** best assays in the range 20.8 to 24.7g/t Au and 4.93 to 26.6g/t Ag.
- **Burrow** best assay (single sample) 20.9g/t Au, 25.4g/t Ag and 2.36% Cu.
- **Dorado** best assays up to 18.95g/t Au and 75.8g/t Ag.
- **Ridge** best assays in the range 0.7 to 15.35g/t Au, 4.14 to 12.4g/t Ag and up to 1.94% Cu.
- **Show** best assays in the range 1.79 to 14.95g/t Au, 42.9 to 837.0g/t Ag and 4.0% to 43.3% Pb.

During the quarter ActivEX announced that reconnaissance portable X-Ray Fluorescence (pXRF) soil geochemical surveys were completed over target areas immediately adjacent to the abandoned Mt Hogan gold mine (Mt Hogan tenement, EPM 18615), identifying gold prospects Independence, General Gordan, Gully and Camp (see ASX announcement 3 February 2016, Figures 2 and 6). Orientation pXRF soil geochemical surveys were also carried out over the Mt Hogan mine area to aid in the characterisation of ground soil geochemical anomalies over known high grade gold mineralisation (Figures 2 and 6). Portable XRF surveying comprised a total of 1,056 readings acquired on east-west traverses spaced 50-100m with a nominal reading interval of 50-100m.

During this phase of field exploration 41 rock chip samples were collected (majority quartz veins or gossanous outcrop) and submitted for assay. The rock chip samples have been assayed and returned high gold grades with over 50% of samples returning values >1g/t Au (22 samples, Figure 6).

Results include:

- **Mt Hogan** gold mine area best assays 12.75 to 128g/t Au, 12.6 to 307g/t Ag and up to 1.31% Cu
- **Independence** best assays 22.8 to 97.6g/t Au and 105 to 659g/t Ag
- **General Gordan** best assays 17.6 to 64.6g/t Au, 51.1 to 87.5g/t Ag, up to 1410ppm Cu and 1.36% Pb
- **Gully** best assays 7.91 to 9.94g/t Au and up to 1.84% Pb
- **Camp** best assays 5.52 to 22.6g/t Au, 8.5 to 13.55g/t Ag and up to 3,050ppm Zn

Exploration activities for the 2016 field season commenced at Gilberton Gold Project with portable X-Ray Fluorescence (pXRF) soil geochemical surveys and rock chip sampling over an area immediately northeast of the abandoned Mt Hogan gold mine (see ASX announcement 31 March 2016). This survey will extend the current pXRF coverage over the Mt Hogan gold mine site (abandoned circa 1996) which identified the Independence, General Gordan, Gully and Camp gold prospects (see ASX announcement 3 February 2016). ActivEX is currently compiling the pXRF data for plotting and analysis.

During this most recent phase of exploration 52 rock chip samples were collected (majority quartz veins or gossanous outcrop) and submitted for assay. To date the rock chip samples have been assayed for gold only and returned high grades to a maximum of 106 g/t Au with 20% of samples returning values >1g/t Au (10 samples, Figure 7 and Table 1).

Further exploration activities, such as pXRF surveys and focussed rock chip and conventional soil sampling, will be undertaken at Mt Hogan, Gilberton and Percy River EPMs with a view to an anticipated RAB/RC drill program at multiple targets within the Gilberton Gold Project in mid-2016.

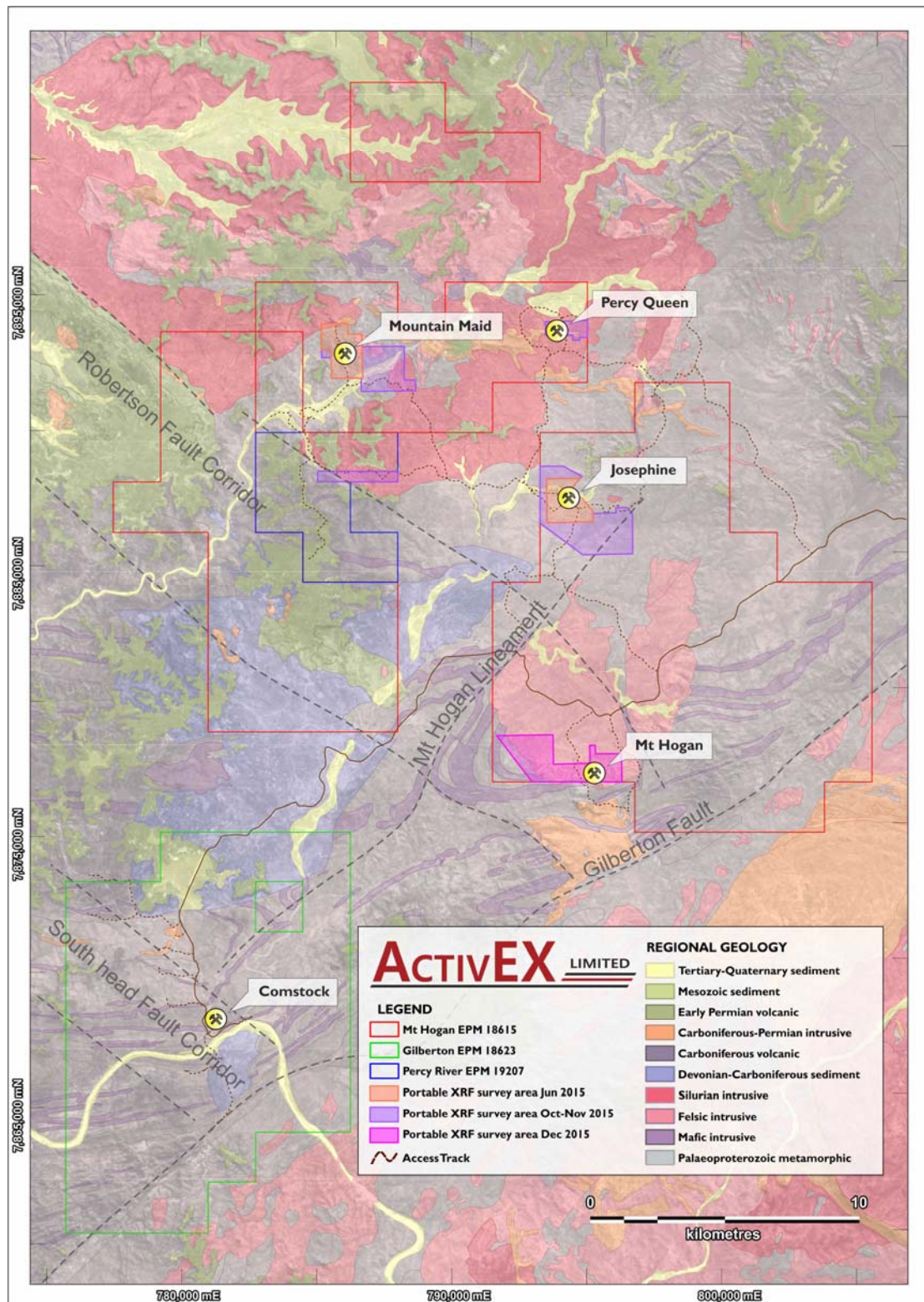


Figure 2. ActivEX Limited Gilberton Gold Project tenement locations, abandoned gold mines and portable XRF survey areas

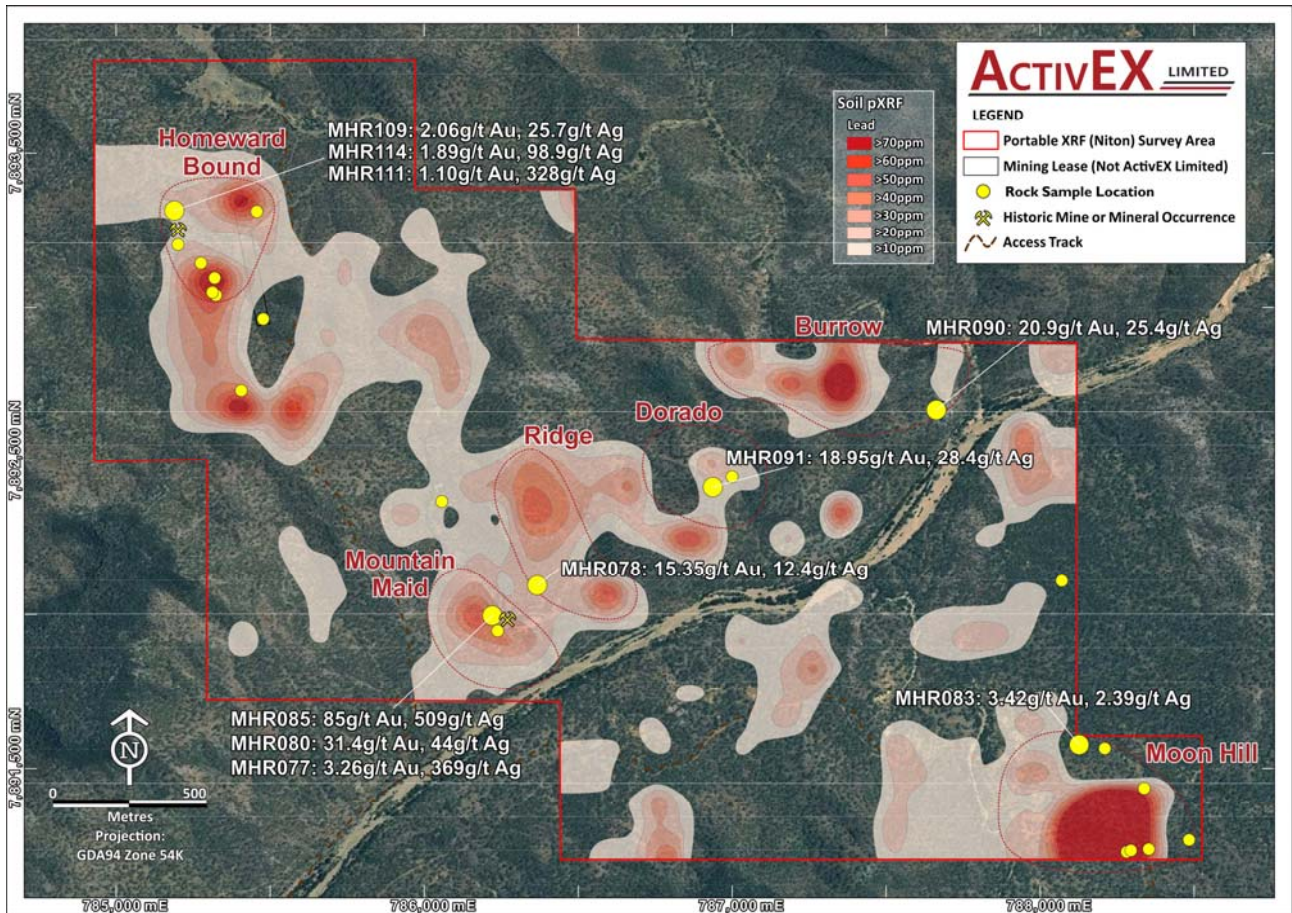


Figure 3. ActivEX Limited Homeward Bound area targets defined by portable XRF sampling - Lead (ppm)

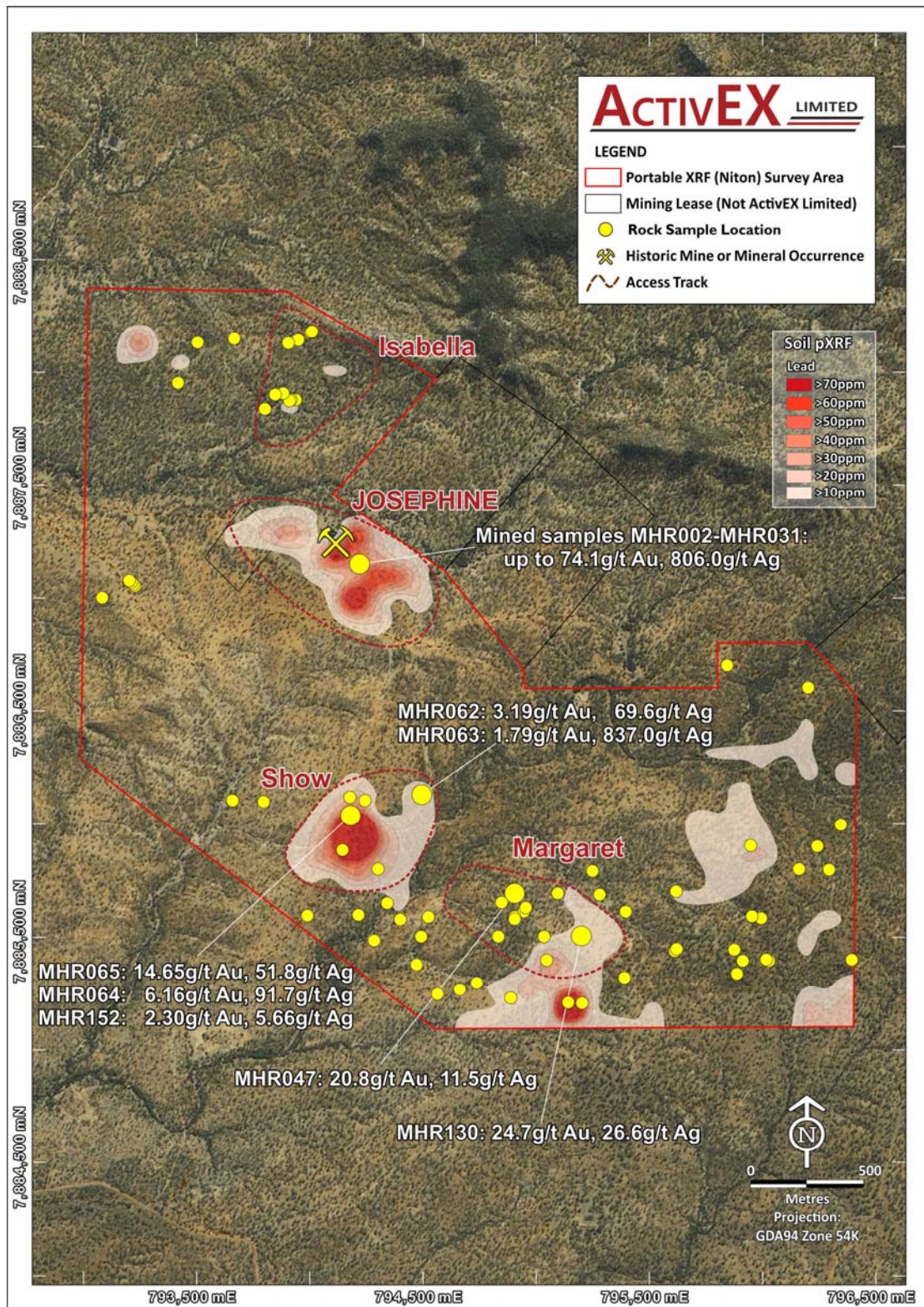


Figure 4. ActivEX Limited Josephine area targets defined by portable XRF sampling - Lead (ppm)



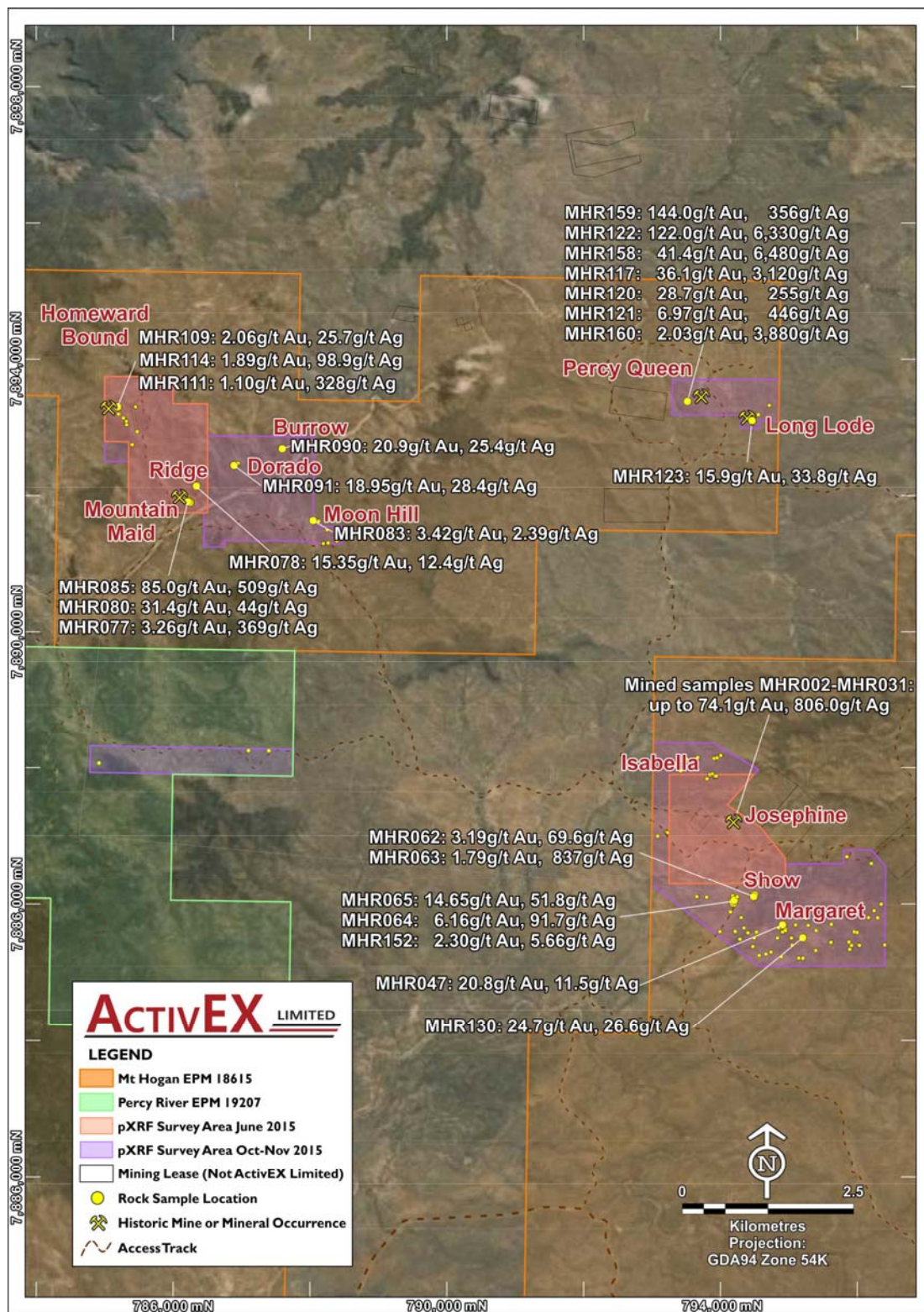


Figure 5. ActivEX Limited Gilberton Gold Project abandoned gold mines, gold occurrences rock chip samples and portable XRF survey areas

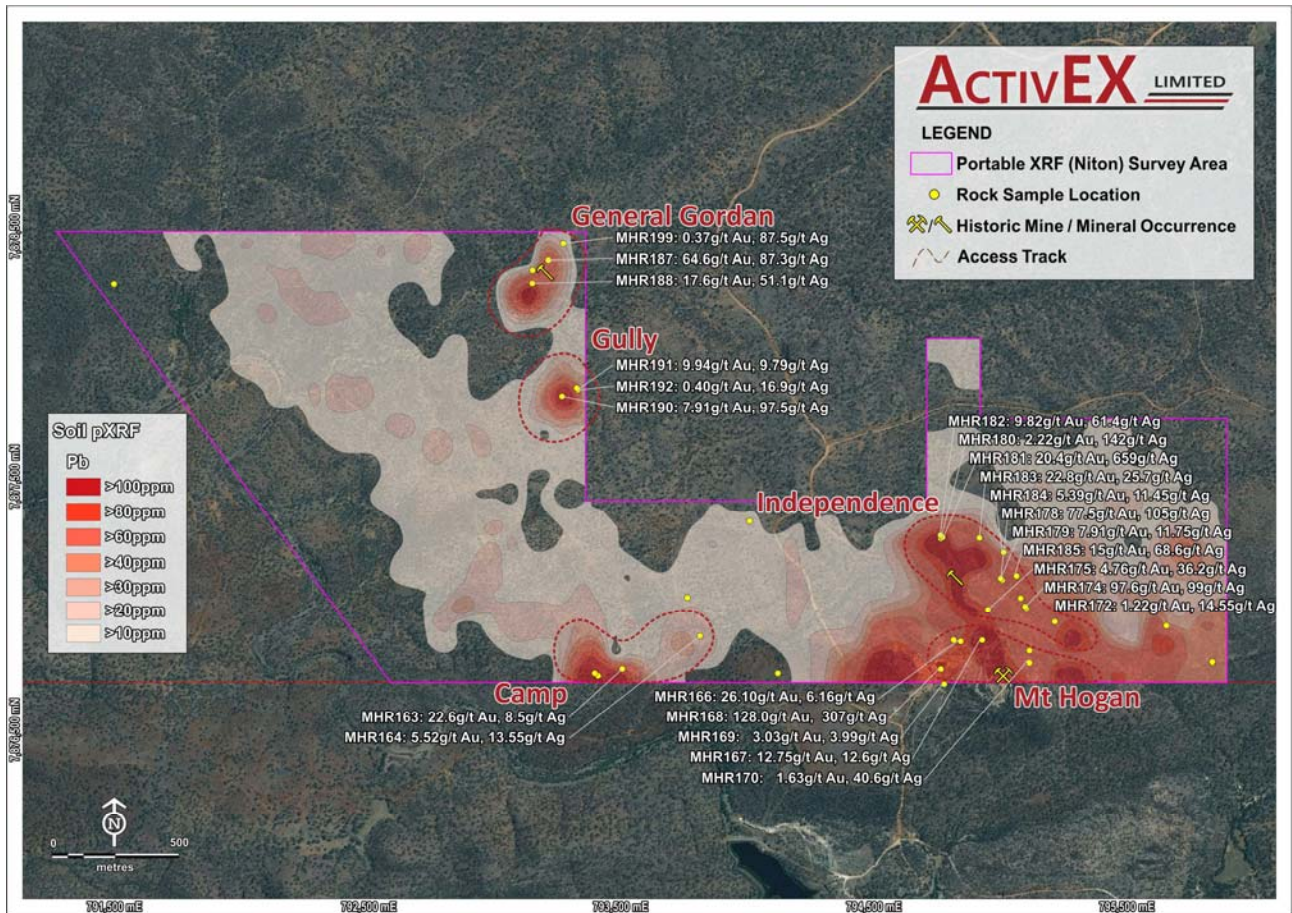


Figure 6. ActivEX Limited Mt Hogan area targets defined by portable XRF sampling - Lead (ppm)

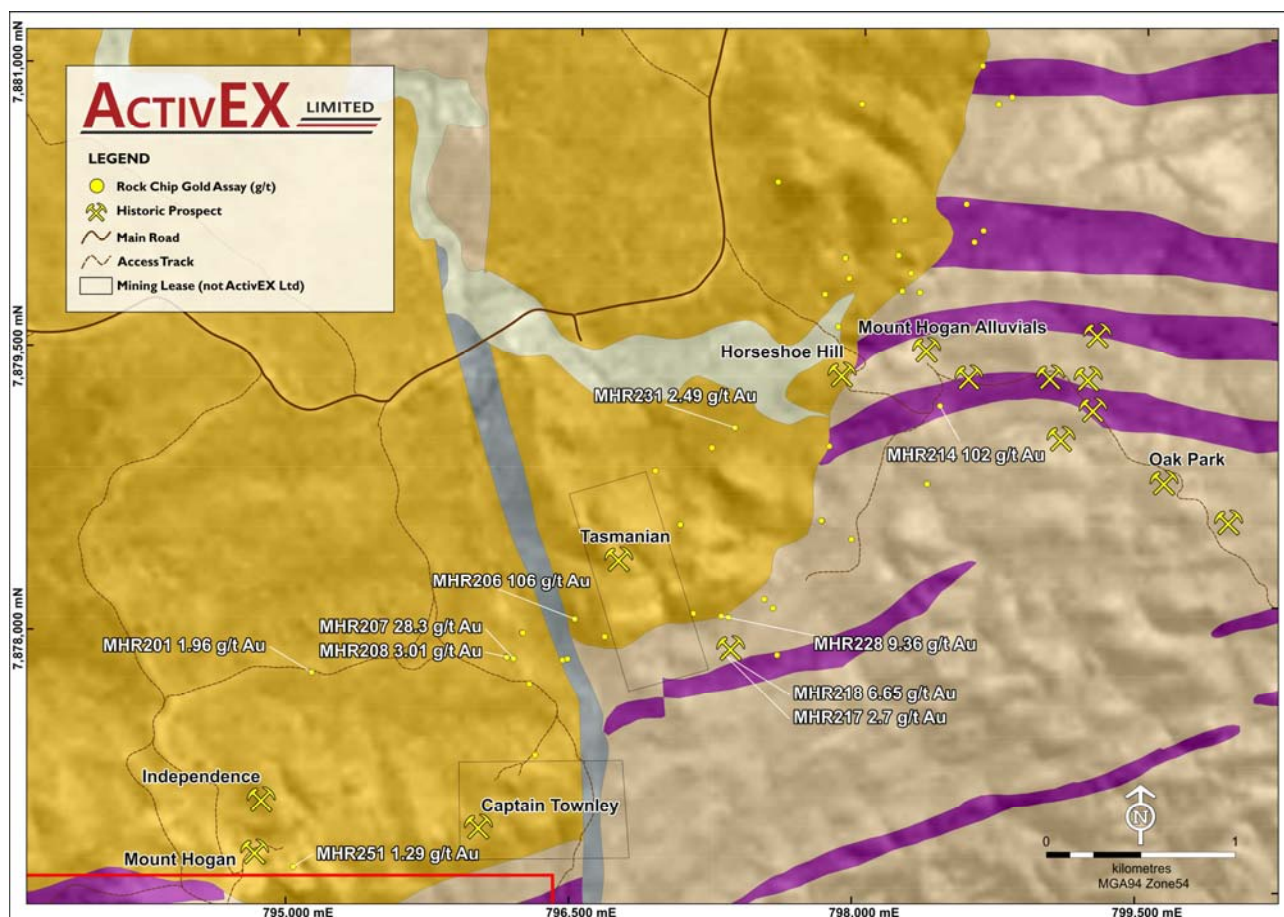


Figure 7. ActivEX Limited Gilberton Gold Project rock chip sample locations - selected gold assay results

## RAVENSWOOD GOLD PROJECT – North Queensland

(EPM 18424, 18426, 18637, 25466 and EPM 25467 – ActivEX 100%, refer Appendix 2)

The Ravenswood Gold Project is situated in the Charters Towers Province in northeast Queensland, approximately 60km south of Charters Towers (Figure 1). The Project consists of EPMs 18424, 18637, 18426, 25466 and 25467, which comprise a total of 117 sub-blocks and encompass an area of 377km<sup>2</sup>. ActivEX Limited holds 100% interest in all the tenements.

The Project is located in the highly prospective Charters Towers – Ravenswood region which has produced over 12Moz of Au and hosts the 3.8Moz Mount Leyshon deposit as well as the 1Moz Mount Wright Au deposit (Figure 1). Mineralisation styles in the district include mesothermal gold veins (e.g. Charters Towers and Ravenswood Goldfields), breccia hosted gold (e.g. Mount Leyshon, Welcome Breccia) and epithermal gold veins (e.g. the Pajingo group).

During the quarter exploration activities for the 2016 field season commenced at Ravenswood Gold Project with rock chip sampling over several known prospects with the King Solomon and Birthday Hills EPMs. A total of 37 rock chip samples were collected (majority quartz veins or gossanous outcrop) and submitted for assay. To date the rock chip samples have been assayed for gold only and returned very high grades to a maximum of 370 g/t Au with over 70% of samples returning values >1g/t Au (27 samples, Figure 8 and Tables 2 and 3).

Results include:

- **Fanning Downs** best assays 1.06 to 370g/t Au
- **Sunset** best assays 0.85 to 96.2g/t Au
- **Rose of Allendale** best assays 8.2 to 72.4.g/t Au
- **King Solomon** best assays 1.67 to 11.85g/t Au
- **Regional samples** best assays 5.94 to 12.5g/t Au

Further exploration activities, such as pXRF surveys and focussed rock chip and conventional soil sampling, will be undertaken at Mt Leyshon, King Solomon, Birthday Hills, Cornishman and Charlie Creek EPMs with a view to an anticipated RAB/RC drill program at multiple targets within the Ravenswood Gold Project in mid-2016.

ActivEX is in the process of establishing a base at Charters Towers to facilitate field operations at Gilberton, Ravenswood and Pentland Gold Projects in 2016.

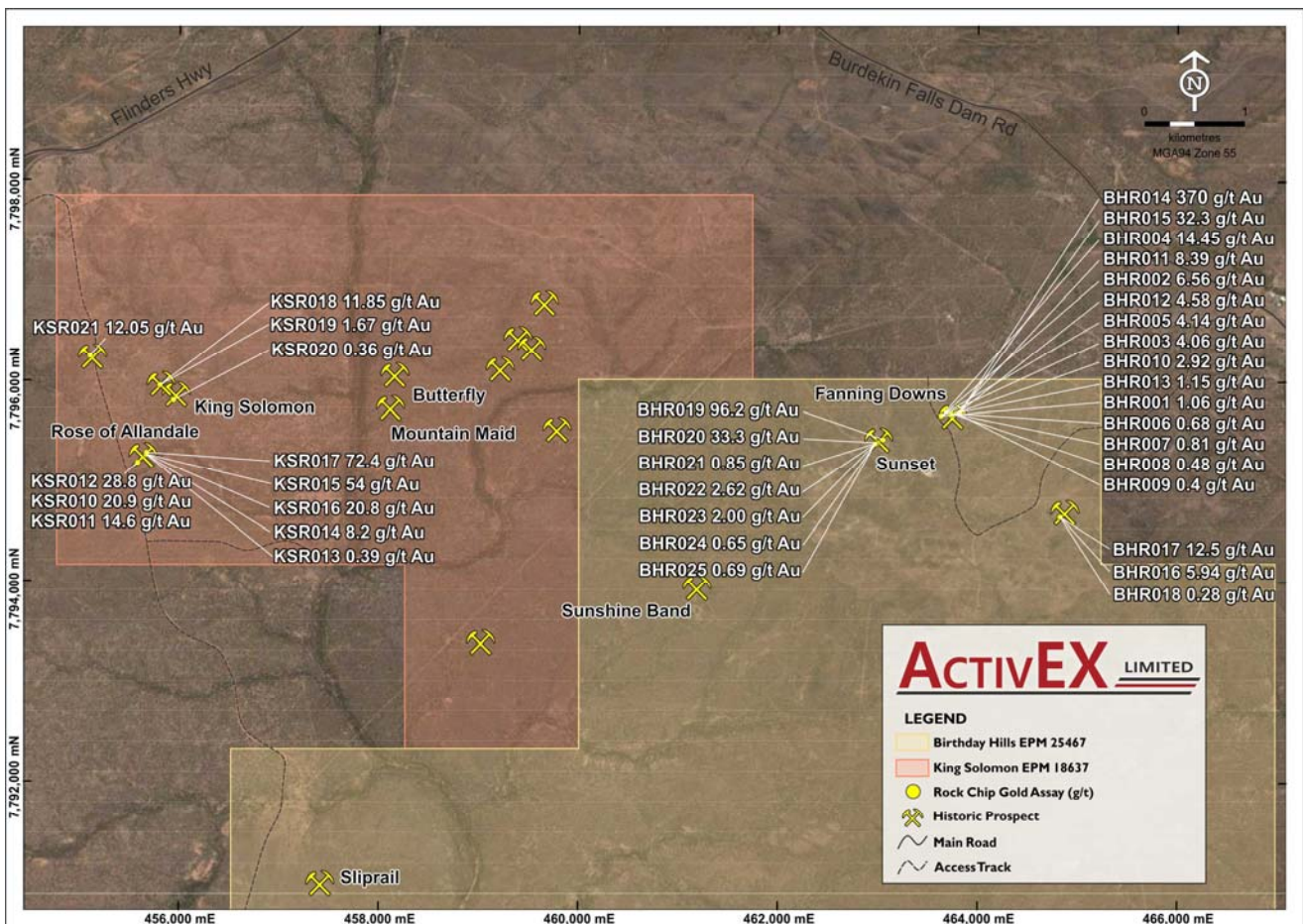


Figure 8. ActivEX Limited Ravenswood Gold Project rock chip sample locations - selected gold assay results

**Table 1. Rock Chip Gold Assays, Mt Hogan EPM 18615, Gilberton Gold Project.**  
( < LOD = Below Limit of Detection)

Rock ID	Easting MGA94 (Zone 54)	Northing MGA94 (Zone 54)	Au (g/t)	Prospect
MHR201	795085	7877749	1.96	Regional
MHR202	796237	7877668	0.57	Regional
MHR203	796415	7877790	0.04	Regional
MHR204	796441	7877796	0.1	Regional
MHR205	796641	7877910	0.02	Regional
MHR206	796484	7878005	106	Regional
MHR207	796156	7877803	28.3	Regional
MHR208	796117	7877813	3.01	Regional
MHR209	796119	7877811	0.76	Regional
MHR210	797957	7878403	0.84	Regional
MHR211	796202	7877937	0.42	Regional
MHR212	796206	7877936	0.71	Regional
MHR213	798363	7878689	0.3	Regional
MHR215	797489	7878093	0.31	Regional
MHR216	797113	7878024	0.06	Regional
MHR217	797276	7877804	2.7	Regional
MHR218	797278	7877805	6.65	Regional
MHR219	797553	7877799	0.1	Regional
MHR220	797053	7878494	0.09	Regional
MHR221	797052	7878495	0.05	Regional
MHR222	797802	7878505	0.01	Regional
MHR223	797800	7878505	0.08	Regional
MHR224	796924	7878782	0.03	Regional
MHR225	797226	7878902	0.05	Regional
MHR226	797848	7878900	0.03	Regional
MHR227	796262	7877293	0.02	Regional
MHR228	797260	7878008	9.36	Regional
MHR229	797298	7878001	0.04	Regional
MHR230	797536	7878045	0.03	Regional
MHR231	797349	7879004	2.49	Regional
MHR232	797965	7879304	0.12	Horseshoe Hill
MHR233	797906	7879528	0.02	Mount Moran
MHR234	797839	7879698	0.08	Mount Moran
MHR235	798248	7879708	0.01	Mount Moran

Rock ID	Easting MGA94 (Zone 54)	Northing MGA94 (Zone 54)	Au (g/t)	Prospect
MHR236	798341	7879700	0.02	Mount Moran
MHR237	798296	7879801	0.01	Mount Moran
MHR238	797968	7879780	0.06	Mount Moran
MHR239	797952	7879891	0.58	Mount Moran
MHR240	797949	7879886	0.05	Mount Moran
MHR241	798232	7879896	0.01	Mount Moran
MHR242	798635	7879959	0.03	Mount Moran
MHR243	798267	7880084	< LOD	Mount Moran
MHR244	798212	7880082	< LOD	Mount Moran
MHR245	797600	7880297	0.01	Mount Moran
MHR246	798684	7880021	0.01	Mount Moran
MHR247	798597	7880162	< LOD	Mount Moran
MHR248	798052	7880702	0.75	Mount Moran
MHR249	798776	7880690	0.01	Mount Moran
MHR250	798848	7880725	0.02	Mount Moran
MHR251	794969	7876725	1.29	Mount Hogan
MHR252	798694	7880892	0.03	Mount Moran

**Table 2. Rock Chip Gold Assays, Birthday Hills EPM 25467, Ravenswood Gold Project.**

Rock ID	Easting MGA94 (Zone 55)	Northing MGA94 (Zone 55)	Au (g/t)	Prospect
BHR001	463629	7795662	1.06	Fanning Downs
BHR002	463632	7795659	6.56	Fanning Downs
BHR003	463631	7795661	4.06	Fanning Downs
BHR004	463630	7795657	14.45	Fanning Downs
BHR005	463632	7795665	4.14	Fanning Downs
BHR006	463739	7795687	0.68	Fanning Downs
BHR007	463740	7795687	0.81	Fanning Downs
BHR008	463739	7795685	0.48	Fanning Downs
BHR009	463780	7795693	0.4	Fanning Downs
BHR010	463783	7795693	2.92	Fanning Downs
BHR011	463790	7795693	8.39	Fanning Downs
BHR012	463806	7795695	4.58	Fanning Downs
BHR013	463805	7795696	1.15	Fanning Downs
BHR014	463819	7795694	370	Fanning Downs

Rock ID	Easting MGA94 (Zone 55)	Northing MGA94 (Zone 55)	Au (g/t)	Prospect
BHR015	463820	7795694	32.3	Fanning Downs
BHR016	464826	7794657	5.94	Regional
BHR017	464825	7794654	12.5	Regional
BHR018	464826	7794654	0.28	Regional
BHR019	463052	7795427	96.2	Sunset
BHR020	463049	7795426	33.3	Sunset
BHR021	462994	7795395	0.85	Sunset
BHR022	462994	7795395	2.62	Sunset
BHR023	462972	7795384	2	Sunset
BHR024	462974	7795384	0.65	Sunset
BHR025	462969	7795384	0.69	Sunset

**Table 3. Rock Chip Gold Assays, King Solomon EPM 18637, Ravenswood Gold Project.**

Rock ID	Easting MGA94 (Zone 55)	Northing MGA94 (Zone 55)	Au (g/t)	Prospect
KSR010	455581	7795182	20.9	Rose of Allandale
KSR011	455582	7795183	14.6	Rose of Allandale
KSR012	455580	7795184	28.8	Rose of Allandale
KSR013	455662	7795267	0.39	Rose of Allandale
KSR014	455662	7795264	8.2	Rose of Allandale
KSR015	455663	7795267	54	Rose of Allandale
KSR016	455664	7795266	20.8	Rose of Allandale
KSR017	455671	7795285	72.4	Rose of Allandale
KSR018	455804	7795955	11.85	King Solomon
KSR019	455804	7795955	1.67	King Solomon
KSR020	455939	7795806	0.36	King Solomon
KSR021	455103	7796250	12.05	Regional

For further information contact:

Mr Grant Thomas, Managing Director

or Mr Craig McPherson, Company Secretary

## Appendix 1

### Declarations under JORC 2012 and JORC Tables

#### Previous Disclosure - 2012 JORC Code

Certain Information relating to Mineral Resources, Exploration Targets and Exploration Data associated with the Company's projects in this March 2016 Quarterly Report has been extracted from the following ASX announcements:

- ASX announcement titled "Gilberton and Ravenswood Gold Projects Exploration Field Activities Commenced for 2016" dated 31 March 2016;
- ASX announcement titled "Gilberton Gold Project Mt Hogan Exploration Results" dated 3 February 2016;
- ASX announcement titled "Gilberton Gold Project Mount Hogan EPM – New Prospects Outlined and High Grade Rock Assays up to 144g/t Au" dated 18 January 2016; and
- ASX announcement titled "Gilberton Gold Project Mount Hogan EPM – Gold Targets and High Grade Rock Assays" dated 30 September 2015;

Copies of these reports are available to view on the ActivEX Limited website [www.activex.com.au](http://www.activex.com.au). These reports were issued in accordance with the 2012 Edition of the JORC Australasian Code for Reporting of Exploration Results, Mineral Resources and Ore Reserves. The Company confirms that it is not aware of any new information or data that materially affects the information included in the original market announcements. The Company confirms that the form and context in which the Competent Person's findings are presented have not been materially modified from the original market announcements.

#### Current Disclosure – Declarations under 2012 JORC Code and JORC Tables

The information in this report which relates to new exploration results for the Ravenswood Gold Project is based on information compiled by Mr G. Thomas, who is a Member of the Australasian Institute of Mining and Metallurgy (MAusIMM) and a Member of the Australian Institute of Geoscientists (MAIG) and Ms J. Hugenholtz, who is a Member of the Australian Institute of Geoscientists (MAIG). Mr Thomas (Managing Director) and Ms Hugenholtz (Exploration Manager) are full-time employees of ActivEX Limited and have sufficient experience relevant to the styles of mineralisation and types of deposit under consideration and the activities being undertaken to qualify as a Competent Person as defined by the 2012 Australasian Code for Reporting Exploration Results, Mineral Resources and Ore Reserves (JORC Code 2012).

Mr Thomas and Ms Hugenholtz consent to the inclusion of their names in this report and to the issue of this report in the form and context in which it appears. The following Tables detail sampling techniques, data management and reporting criteria according to the JORC Code (2012).

### JORC Table 1 – King Solomon EPM 18637 and Birthday Hills EPM 25467 – Rock Sampling

#### Section 1 - Sampling Techniques and Data – EPMS 18637 and 25467

Criteria	Explanation
Sampling techniques	<ul style="list-style-type: none"> <li>• Selected rock samples were collected during the course of field investigations.</li> </ul>
Sub-sampling techniques and sample preparation	<ul style="list-style-type: none"> <li>• Rock samples obtained using geo-pick and collected in calico bag.</li> <li>• Rock samples sent for laboratory analysis to ALS Global, Townsville laboratory.</li> <li>• Assays are being conducted using standard procedures and standard laboratory checks, by methods Au-AA25 for Au; ME-MS61r for Ag, Al, As, Ba, Be, Bi, Ca, Cd, Ce, Co, Cr, Cs, Cu, Dy, Er, Eu, Fe, Ga, Gd, Ge, Hf, Ho, In, K, La, Li, Lu, Mg, Mn, Mo, Na, Nb, Nd, Ni, P, Pb, Pr, Rb, Re, S, Sb, Sc, Se, Sm, Sn, Sr, Ta, Tb, Te, Th, Ti, Tl, Tm, U, V, W, Y, Yb, Zn and Zr; and Hg-MS42 for Hg.</li> <li>• The nature and quality of the sample preparation is considered appropriate for the mineralisation style.</li> <li>• The samples sizes are appropriate for the material being sampled.</li> </ul>
Quality of assay data and laboratory tests	<ul style="list-style-type: none"> <li>• The four acid digest used in ME-MS61r is considered to be a 'near-total' digest.</li> <li>• The nature and quality of the assaying and laboratory procedures used is considered appropriate for the mineralisation style.</li> </ul>
Verification of sampling and assaying	<ul style="list-style-type: none"> <li>• Laboratory results and associated QAQC documentation is stored digitally.</li> </ul>



Location of data points	<ul style="list-style-type: none"> <li>• Location of all samples recorded by hand held Garmin GPS device.</li> <li>• North Queensland – grid system MGA94, Zone 55.</li> <li>• Refer to Table 2 and 3 for location of rock samples.</li> </ul>
Data spacing and distribution	<ul style="list-style-type: none"> <li>• Rock samples collected at random spacing and distribution.</li> </ul>
Orientation of data in relation to geological structure	<ul style="list-style-type: none"> <li>• Rock samples collected at points of geological interest.</li> </ul>
Sample security	<ul style="list-style-type: none"> <li>• Rock samples were packed into polyweave bags for transport.</li> <li>• Samples were transported to the ALS Global Brisbane laboratory by ActivEX personnel.</li> </ul>
Audits or reviews	<ul style="list-style-type: none"> <li>• Standard laboratory procedure for laboratory samples.</li> <li>• In-house review of QAQC data for laboratory samples.</li> </ul>

## Section 2 - Reporting of Exploration Results – EPMs 18637 and 25467

Criteria	Explanation
Mineral tenement and land tenure status	<ul style="list-style-type: none"> <li>• EPM 18637, King Solomon and EPM 25467 Birthday Hills, are 100% owned by ActivEX Limited.</li> <li>• EPMs 18637 and 25467 form part of the ActivEX Ravenswood Gold Project, which also includes EPM 18424, 18426, and 25466; all 100% owned by ActivEX Limited.</li> <li>• EPM 18637 and EPM 25467 are subject to Native Title claim QUD6244/1998, held by the Birriah People. ActivEX Limited has entered into an agreement with the Birriah People in relation to EPM 18637 and EPM 25467.</li> </ul>
Exploration done by other parties	<ul style="list-style-type: none"> <li>• Previous exploration has been dominantly carried out by McIntyre Mines (Australia), Camira Mines, Aberfoyle Exploration, Metals Exploration, MIM Exploration, Rishton (Gold), and Carpentaria Gold. Work included geophysics, mapping, rock chip, soil and stream sediment sampling, trenching and drilling.</li> <li>• For additional information, refer to the ActivEX website (<a href="http://www.activex.com.au/ravenswood-gold.php">http://www.activex.com.au/ravenswood-gold.php</a>).</li> </ul>
Geology	<ul style="list-style-type: none"> <li>• The Ravenswood Gold Project tenements are located in the Charters Towers Province within the Thompson Orogen. The Charters Towers Province is characterized by Neoproterozoic to early Palaeozoic assemblages.</li> <li>• The geology of the Ravenswood Gold Project area is dominated by Ordovician-Silurian granitoids of the Macrossan association which crop out as plutons and screens between Silurian – Devonian granitoids of the Pama association. Rocks of the Late Cambrian – Early Ordovician Seventy Mile Range Group occur in the southwest of the Project area, in the southern sub-blocks of EPMs 18424 and 25467. Carboniferous to Permian intrusive and extrusive rocks of the Kennedy association occur scattered throughout the Project area.</li> <li>• EPMs 18637 and 25467 are located in an area dominated by Macrossan Province Ordovician granitoids, including an intermediate to mafic unit that hosts most of the known gold occurrences within the EPMs.</li> <li>• The E-W trending Alex Hill Shear Zone occurs approximately 1 km north of EPMs 18637 and 25467, and is the major structural element in the immediate area of the EPMs. It is interpreted to be a crustal-scale, sinistral, transcurrent fault, with a possible early reverse fault (south block up) history. The shear zone is characterised by a zone of strongly to intensely foliated Charters Towers Metamorphics and mylonitic Ordovician granite approximately 1 km wide. The foliation within the surrounding granite is more widely distributed on the southern side of the shear zone, with localised mylonite zones observable up to 1 km away from the interpreted core of the structure. The Alex Hill Shear Zone and related east-west orientated structures appear to be by cut NNW trending structures.</li> <li>• The overall trend within EPMs 18637 and 25467 appears to be east to east-northeast, based on lithological contacts, mineral occurrences, and aeromagnetic features – and broadly parallel to the Alex Hill Shear Zone. The EPMs are also transected by Pandanus Creek which shows a strong local north-south control cutting through the EPMs and trending towards the Welcome Breccia.</li> </ul>
Drill hole information	<ul style="list-style-type: none"> <li>• Drill hole data not being reported.</li> </ul>
Data aggregation methods	<ul style="list-style-type: none"> <li>• No data aggregation applied.</li> </ul>

Relationship between mineralisation widths and intercept lengths	<ul style="list-style-type: none"><li>• Drill hole data not being reported.</li></ul>
Diagrams	<ul style="list-style-type: none"><li>• Refer to body of report for diagrammatic information.</li></ul>
Balanced reporting	<ul style="list-style-type: none"><li>• Refer to body of report for geochemical information.</li></ul>
Other substantive exploration data	<ul style="list-style-type: none"><li>• Refer to body of report for additional geological observations.</li></ul>
Further work	<ul style="list-style-type: none"><li>• Refer to body of report for further work plans.</li></ul>

## Appendix 2

List of Exploration/Mining Tenements held by ActivEX Limited at 31 March 2016  
(in accordance with ASX Listing Rule 5.3.3)



Project Name	Tenement Name	EPM	Status	Granted	Expires	Holder	Details	Interest at start of quarter	Interest at end of quarter	Sub-blocks at start of quarter	Sub-blocks at end of quarter
<b>Southeast Queensland</b>											
Barambah Gold	Barambah	14937	Granted	14-Mar-05	13-Mar-17	ActivEX Limited and Norton Gold Fields	Purchase of Norton Gold Fields' interest in progress	75%	75%	9	9
	One Mile	18732	Granted	15-Oct-10	14-Oct-20	ActivEX Limited		100%	100%	16	16
Esk Copper and Gold	Boobyjan	14476	Granted	08-Jun-04	07-Jun-17	ActivEX Limited		100%	100%	23	23
	Dadamarine	14979	Granted	12-Apr-05	11-Apr-20	ActivEX Limited		100%	100%	15	15
	Blairmore	16265	Granted	04-Sep-07	03-Sep-17	ActivEX Limited		100%	100%	40	40
	Ban Ban	16327	Granted	31-Jul-07	30-Jul-17	ActivEX Limited		100%	100%	12	12
	Stockhaven	18717	Granted	13-Oct-10	12-Oct-20	ActivEX Limited		100%	100%	26	26
Coalstoun Lakes Copper and Gold	Coalstoun	14079	Granted	23-Oct-03	22-Oct-17	ActivEX Limited		100%	100%	57	57
Prospect Gold	Prospect Creek	14121	Granted	03-Aug-05	02-Aug-20	ActivEX Limited		100%	100%	26	26
<b>Northwest Queensland</b>											
Cloncurry Copper and Gold	Mt Agate	14955	Granted	29-Jun-06	28-Jun-16	ActivEX Limited	Renewal lodged	100%	100%	55	55
	Florence Creek	15285	Granted	30-Oct-07	29-Oct-17	ActivEX Limited		100%	100%	51	51
	Malbon	17313	Granted	24-May-10	23-May-18	ActivEX Limited		100%	100%	9	9
	Florence Flat	17805	Granted	21-Apr-11	20-Apr-21	ActivEX Limited		100%	100%	5	5
	Brightlands	18511	Granted	30-Apr-12	29-Apr-17	ActivEX Limited		100%	100%	24	24
	Selwyn East	18073	Granted	19-Sep-11	18-Sep-16	ActivEX Limited		100%	100%	66	66
	Concorde	25192	Granted	16-Dec-14	15-Dec-19	ActivEX Limited		100%	100%	21	21
	Upper Mort	25194	Granted	16-Dec-14	15-Dec-19	ActivEX Limited		100%	100%	6	6
	Heathrow East	25454	Granted	24-Dec-14	23-Dec-19	ActivEX Limited		100%	100%	11	11
	North Camel Dam	25455	Granted	01-May-15	30-Apr-20	ActivEX Limited		100%	100%	8	8
	Camel Hill	17454	Granted	23-Jan-12	22-Jan-17	ActivEX Limited		100%	100%	8	8
Robur	18852	Granted	10-Aug-12	09-Aug-17	ActivEX Limited		100%	100%	45	45	
Bulonga	18053	Granted	27-Apr-12	26-Apr-17	ActivEX Limited		100%	100%	29	29	
<b>North Queensland</b>											
Gilberton Gold	Percy River	19207	Granted	13-Dec-12	12-Dec-17	ActivEX Limited		100%	100%	7	7
	Mt Hogan	18615	Granted	19-Jun-13	18-Jun-18	ActivEX Limited		100%	100%	96	96
	Gilberton	18623	Granted	08-Apr-14	07-Apr-19	ActivEX Limited		100%	100%	40	40
Pentland Gold	Pentland	14332	Granted	10-Dec-04	09-Dec-19	ActivEX Limited		100%	100%	39	39
	Oxley Creek	15055	Granted	11-Jan-06	10-Jan-21	ActivEX Limited		100%	100%	25	25
	Norwood South	15185	Granted	03-Aug-06	02-Aug-16	ActivEX Limited		100%	100%	18	18
Ravenswood Gold	Mt Leyshon	18424	Granted	08-May-12	07-May-17	ActivEX Limited		100%	100%	29	29
	King Solomon	18637	Granted	17-Aug-12	16-Aug-17	ActivEX Limited		100%	100%	8	8
	Cornishman	18426	Granted	16-Dec-14	15-Dec-19	ActivEX Limited		100%	100%	40	40
	Charlie Creek	25466	Granted	14-Oct-14	13-Oct-19	ActivEX Limited		100%	100%	6	6
	Birthday Hills	25467	Granted	19-Mar-15	18-Mar-20	ActivEX Limited		100%	100%	34	34
<b>Western Australia</b>											
Lake Chandler Potash	Lake Chandler	M77/22	Granted	17-Jan-85	16-Jan-27	ActivEX Limited		100%	100%	359 ha	359 ha
	Reward Lake	P77/3977	Application			ActivEX Limited		100%	100%	25 ha	25 ha