


Renascor Resources Limited  
ASX code: RNU

# Renascor Resources Limited

Developing Australia's  
Largest High-Grade  
Graphite Deposit



Presented at Noosa Mining and  
Exploration Conference  
21 July 2016



**RENASCOR**  
RESOURCES

# Important notices



## **Forward Looking Statements**

This Presentation may include statements that could be deemed “forward-looking” statements. Although Renascor Resources Limited (the “Company”) believes the expectations expressed in such forward-looking statements are based on reasonable assumptions, such statements are not guarantees of future performance and actual results or developments may differ materially from those expected in the forward-looking statements or may not take place at all.

## **No Offer to Sell or Invitation to Buy**

This Presentation is not, and should not be considered to, constitute any offer to sell, or solicitation of an offer to buy, any securities in the Company, and no part of this Presentation forms the basis of any contract or commitment whatsoever with any person. The Company does not accept any liability to any person in relation to the distribution or possession of this Presentation from or in any jurisdiction.

## **Disclaimer**

Whilst care has been exercised in preparing and presenting this Presentation, to the maximum extent permitted by law, the Company and its representatives make no representation, warranty or undertaking, express or implied, as to the adequacy, accuracy, completeness or reasonableness of this Presentation; accept no responsibility or liability as to the adequacy, accuracy, completeness or reasonableness of this Presentation; and accept no responsibility for any errors or omissions from this Presentation

## **Competent Persons Statement**

The exploration results in this Presentation, insofar as they relate to mineralisation, are based on information compiled by Mr G.W. McConachy (fellow of the Australasian Institute of Mining and Metallurgy) who is a director of the Company. Mr McConachy has sufficient experience relevant to the style of mineralisation and type of deposits being considered to qualify as a competent person as defined by the 2012 edition of the Australasian Code for Reporting of Exploration Results, Mineral Resources and Ore Reserves (the JORC code, 2012 edition). Mr McConachy consents to the inclusion in the report of the matters based on his information in the form and context in which it appears.

# Investment highlights



## Australia's Largest Graphite Deposit

- Siviour deposit is large, shallow and open along strike
- Considerable scope to add to resource with follow-up drill program
- Drilling currently underway

## High Quality Deposit

- Renascor is targeting a coarse flake, high purity concentrate, with initial petrology testing +80% in super-jumbo, jumbo and large categories
- Unique shallow, tabular orientation delivering the potential for straightforward low-cost mining

## Tier One Mining Jurisdiction

- Targeting the establishment of cost competitive supply in tier one jurisdiction

## Material Upside

- Siviour is a recent discovery and trades at a material discount to its peers
- Several near term catalysts offering scope to align valuation with peers



# Renascor corporate profile



Adelaide-based management team with track record of discovery and development in South Australia

<b>ASX code</b>	RNU
<b>Shares on issue</b>	363.0M
<b>Options</b>	64.4M*
<b>Cash</b> (Estimate at 30 Jun 16)	\$790K
<b>Conditional placement proceeds</b>	\$589K
<b>Share price</b> (14 Jul 16)	\$0.026
<b>12 month range</b>	\$0.009-\$0.032
<b>Market capitalisation</b> (14 Jul 16)	\$9.4M
<b>Top 20 shareholding</b>	43%
<b>Board shareholding</b>	23%

All figures quoted in \$AUD

\*64.4m options exercisable @ \$0.03 to acquire 1 new share, expiring 30 Sep 16

# Experienced board & management team



## **Stephen Bizzell, Non-Executive Chairman**

Stephen is highly experienced in the fields of corporate restructuring, debt and equity financing, mergers and acquisitions and has over 20 years corporate finance and public company management experience in the resources sector in Australia and Canada. Stephen was a founder and executive director of Arrow Energy from 1999 to until its acquisition in 2010 by Royal Dutch Shell and PetroChina for \$3.5 billion. Stephen is the Chairman of boutique corporate advisory and funds manager, Bizzell Capital Partners and serves as a director of a number of other ASX listed companies.

## **David Christensen, Managing Director**

David Christensen is an experienced mining executive, with recent successful experience managing exploration, mining and marketing operations. Prior to founding the Company, David served as Chief Executive Officer of Adelaide-based companies, Heathgate Resources Pty Ltd and Quasar Resource Pty Ltd, overseeing their Australian operations, including the Beverley uranium mine, as well as the expansion into new projects with the discovery and development of the Four Mile deposit and numerous joint ventures. David was educated at Cornell University (BA, Economics and Classical Civilizations), the University of California, Los Angeles (JD) and the Università di Bologna (Fulbright Fellow).

## **Geoff McConachy, Executive Director**

Geoffrey McConachy is an accomplished geologist with over thirty years of Australian and international experience in the mining industry assessing a wide range of commodities. Geoffrey is a fellow of the Australasian Institute of Mining and Metallurgy and a former Director of the Uranium Information Centre.

## **Andrew Martin, Non-Executive Director**

Andrew Martin is an executive with Deutsche Bank with over 15 years experience, predominately advising in the infrastructure, utilities and natural resources sectors. Andrew has a Bachelor of Economics (Hons) from the University of Sydney and is a founder and Alternate Director of ASX listed Stanmore Coal Limited (having been a Director from 2009 to 2014) and unlisted St Lucia Resources International Pty Limited.

## **Chris Anderson, Non-Executive Director**

Chris Anderson is an experienced geophysicist with over 30 years in mineral exploration in Australia (with a focus in South Australia) and abroad. Chris is a graduate of Adelaide University (BSc, Geology and Geophysics) (Hons), and is a fellow of Australasian Institute of Mining and Metallurgy.

## **Angelo Gaudio, Chief Financial Officer and Company Secretary**

Angelo Gaudio is a qualified accountant with over 35 years of finance, management and accounting experience. His expertise includes corporate finance, risk management and financial reporting, as well as corporate development and Native Title relations. Angelo is a Fellow of the Institute of Public Accountants and a Certificated member of the Governance Institute of Australia.

# Focused graphite strategy



## Strategy

To capitalise on the highly encouraging progress to date at Siviour with the establishment of Australia's largest graphite resource, Renascor intends to continue to progress toward goal of becoming a low-cost producer of high-quality coarse flake graphite for export.

## Catalysts

### Project milestones for 2016

- Expand resource
- Deliver definitive mineral processing test work
- Commence scoping study to define economic parameters





# Siviour graphite deposit



Siviour graphite deposit in South Australia has quickly emerged as a potential commercial graphite development with several key components already established

- Deposit size and quality**  
Australia's largest graphite resource with ample scope to grow
- Location**  
Secure mining jurisdiction: South Australia  
Near port, rail, established workforce
- Flake size and distribution**  
Petrology shows over 60% in super-jumbo (+500 $\mu$ m) category
- Product purity**  
Preliminary bench flotation tests on adjacent prospect has produced concentrates grading up to 95% TGC with flake size up to 600 $\mu$ m; mineral processing work at Siviour currently underway
- Off-take**  
Product testing to commence 3Q 2016
- Time-frame to production**  
Scoping study expected 2016

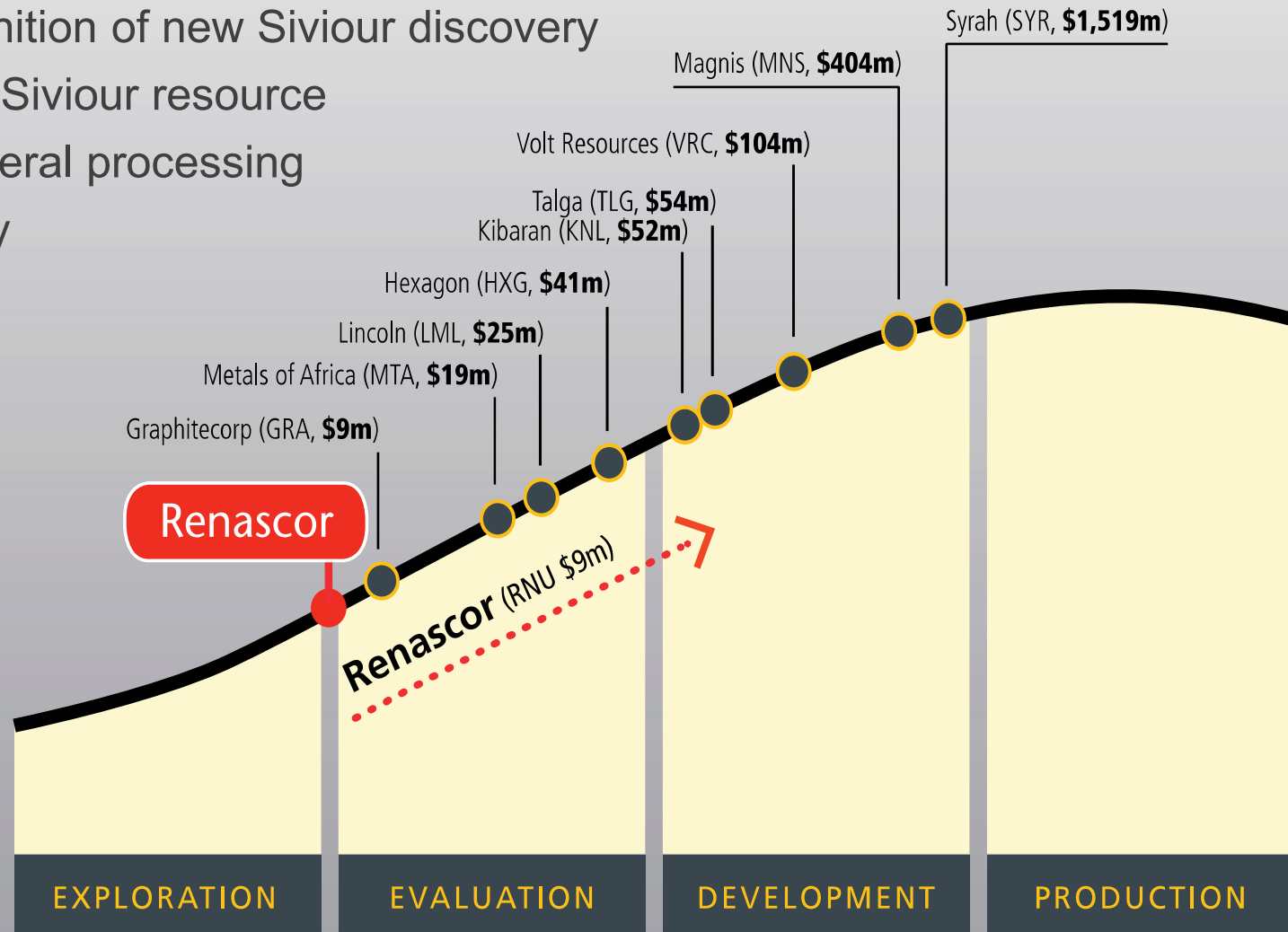


# Re-rating potential



## Triggers for share price re-rating:

- Market recognition of new Siviour discovery
- Expansion of Siviour resource
- Definitive mineral processing
- Scoping study





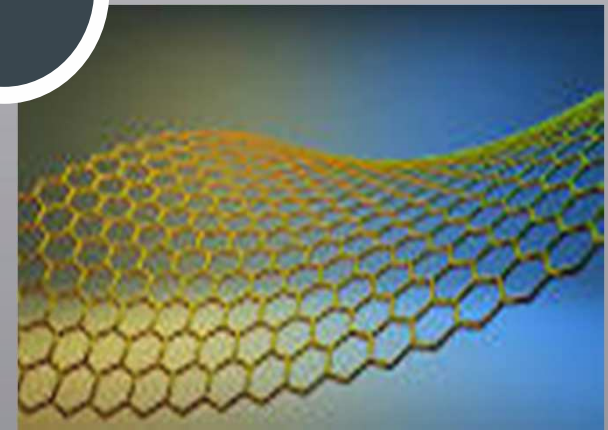
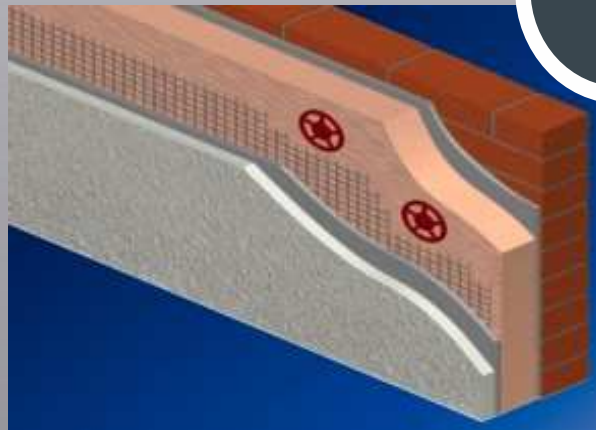
# Graphite market



High tech growth areas are adding to historical industrial uses and driving increased demand for flake graphite

Lithium Ion batteries  
Graphene  
Expandable graphite  
Super capacitors  
Green technologies  
Pebble bed reactors

Growing demand from new and emerging technologies

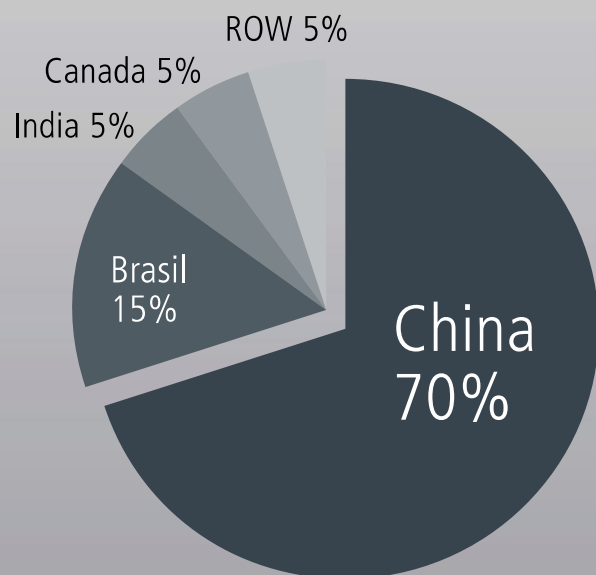


# Why graphite in Australia?



## Graphite market needs secure supply

- China dominates current supply
- Emerging production from Africa

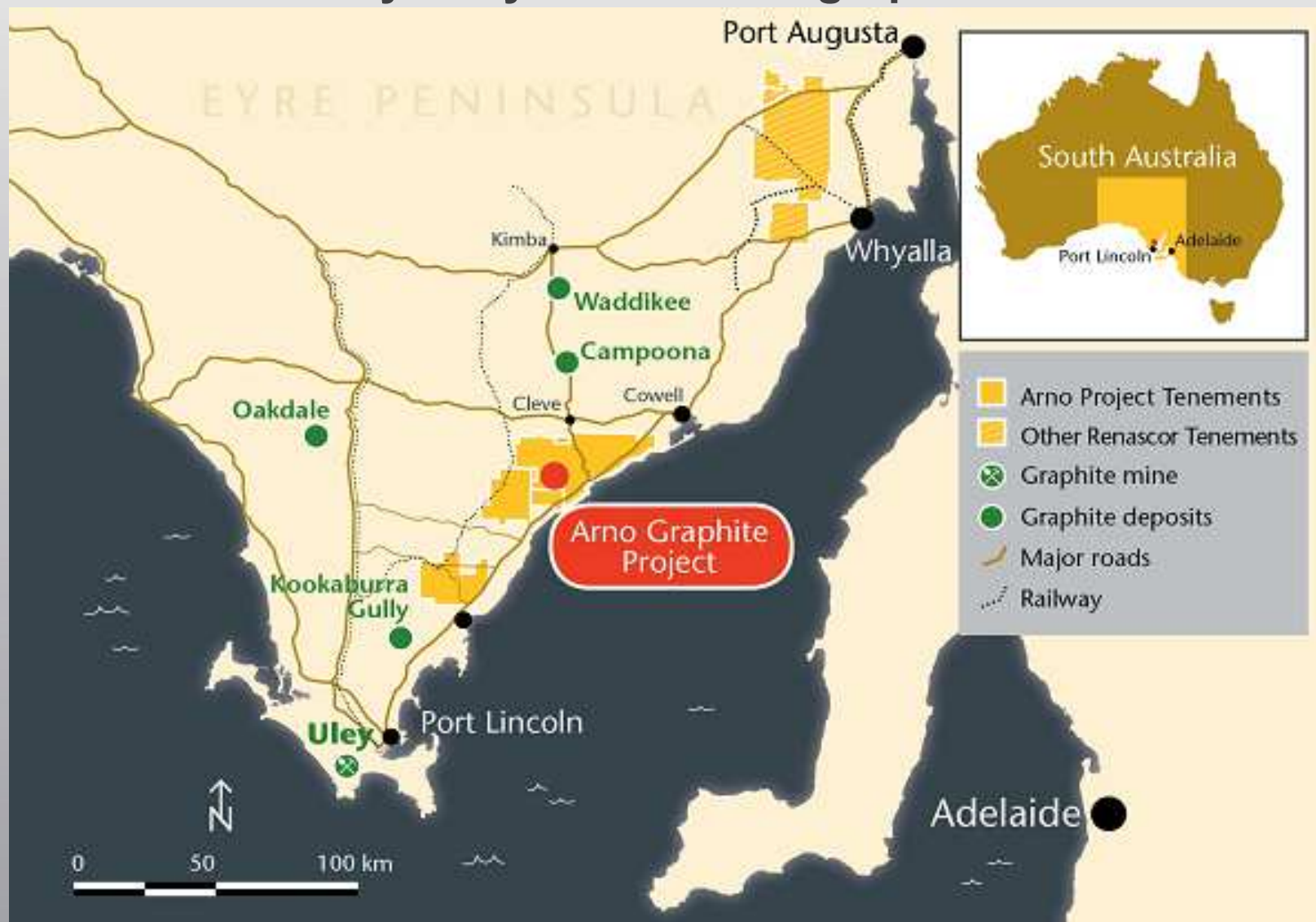


Source: Company data, Macquarie Research, November 2015

# Arno graphite project



Located centrally in Eyre Peninsula graphite corridor



Arno graphite project, showing location and nearby graphite deposits

# Arno graphite project: location



## Optimal location for development and production

### Favourable jurisdiction

- South Australia
- Supportive government
- Freehold land

### Port, Road, Rail, Power

- Established ports -- Port Lincoln, Whyalla
- Highway - 10km
- Railhead - 16km
- Power - on main grid

### Established workforce

- Whyalla (23,000), Port Lincoln (15,000), Port Augusta (13,000)
- Arno Bay, Cleve, Cowell, Tumby Bay



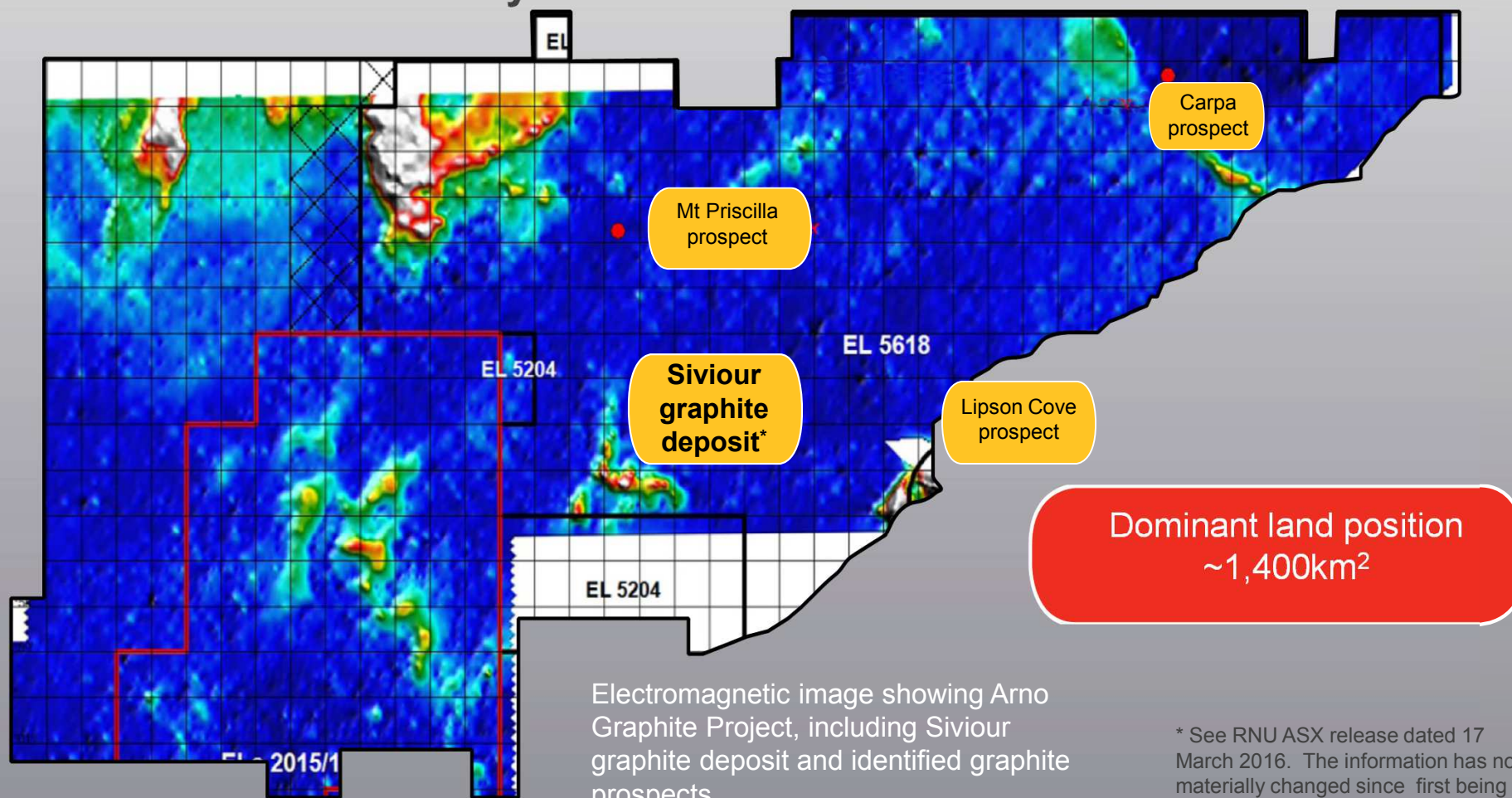
Eyre Peninsula: established infrastructure



# Arno graphite project



Multiple graphite prospects –first drill program (Jan 2016)  
leads to Siviour discovery



Dominant land position  
~1,400km<sup>2</sup>

\* See RNU ASX release dated 17 March 2016. The information has not materially changed since first being reported

# Sivour graphite deposit



## Australia's largest graphite deposit

JORC-compliant Mineral Resource of **16.8Mt @ 7.4% TGC** for **1,243,200t** of contained graphite\*

High-grade portion: **5.9Mt @ 10.0% TGC** for **590,000t** of contained graphite\*

JORC Mineral Resource Estimate by Optiro Pty Ltd – independent internationally recognised mining consultants

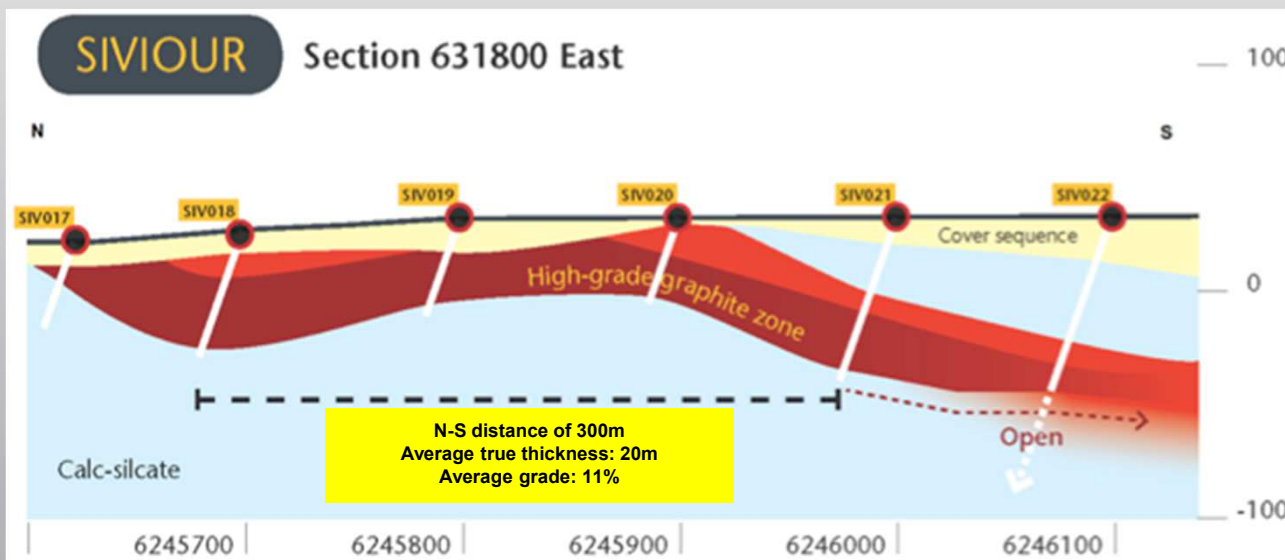
Open along-strike

## High-quality flake graphite

Petrology shows over 80% in the high-value super-jumbo (+500µm), jumbo (+300µm) and large (+180µm) categories

## Scoping study

Declaration of JORC resource provides basis for scoping study – 2016



Category	Mineralisation (Mt)	TGC	Contained graphite (t)
Indicated*	6.8	8.1%	550,800
Inferred*	10.0	6.9%	690,000
<b>Total*</b>	<b>16.8</b>	<b>7.4%</b>	<b>1,243,200</b>

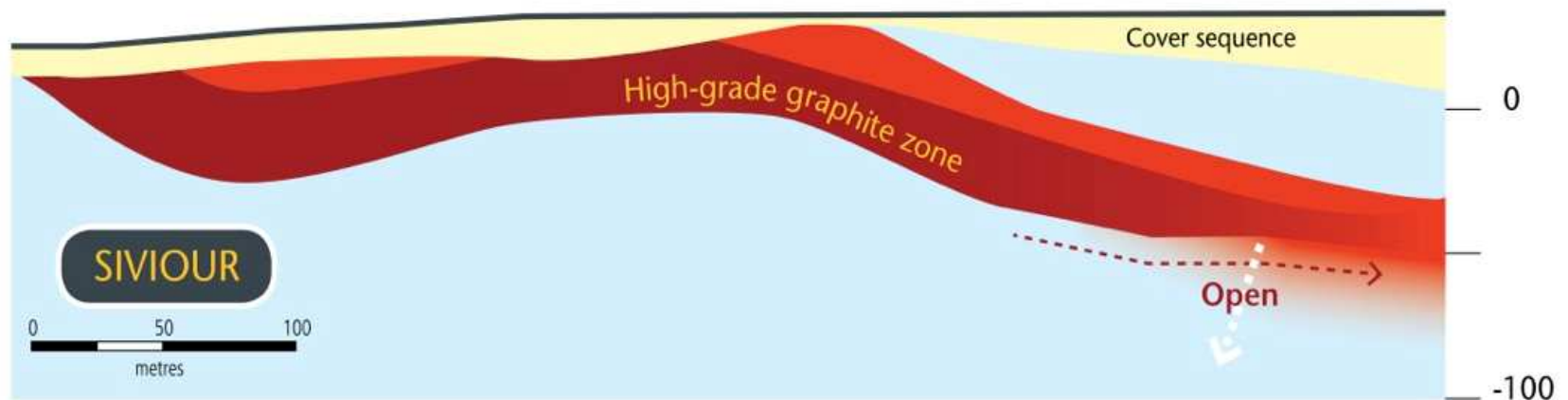
\* See RNU ASX release dated 17 March 2016. The information has not materially changed since first being reported



# Siviour deposit – flat-lying and near-surface



Siviour has unique shallow, flat-lying orientation

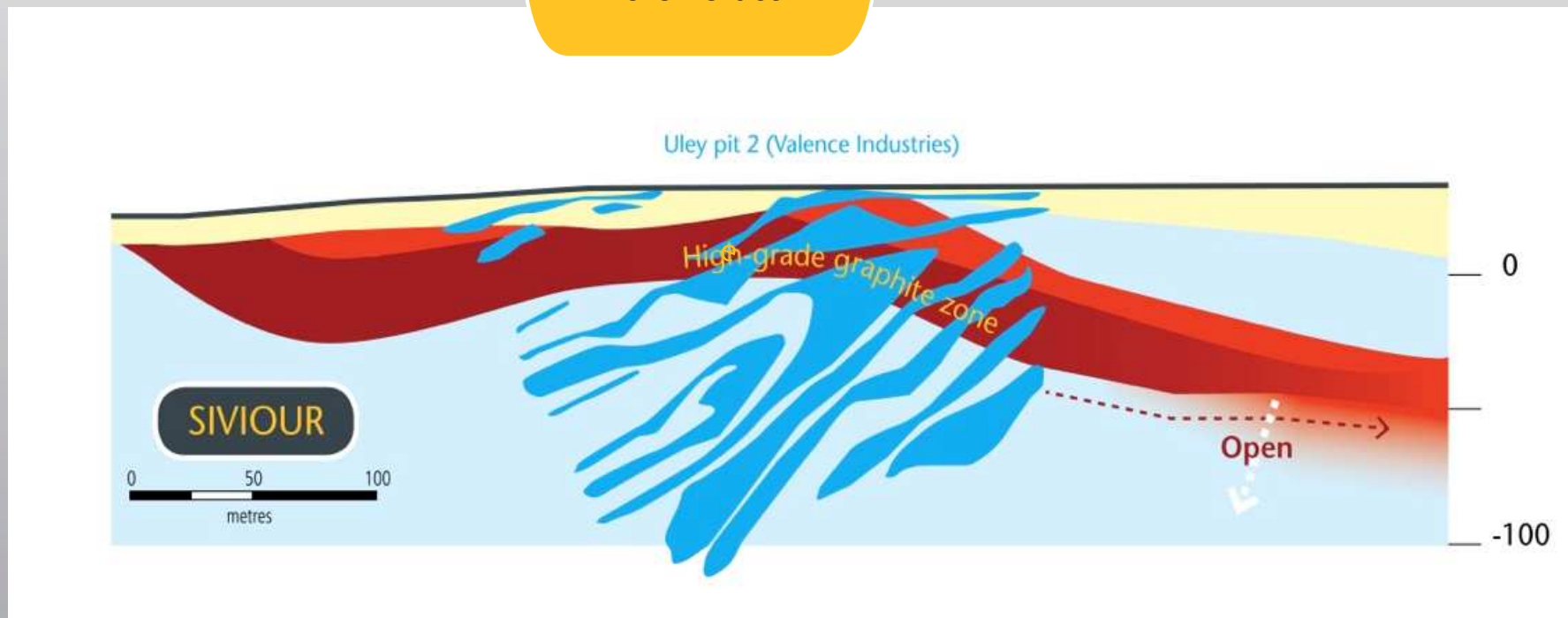


Siviour prospect: Geological cross-section for north-south Section 631800E, showing graphite-mineralised zones

# Siviour deposit – flat-lying and near-surface



Other graphite deposits are deeper, more vertical

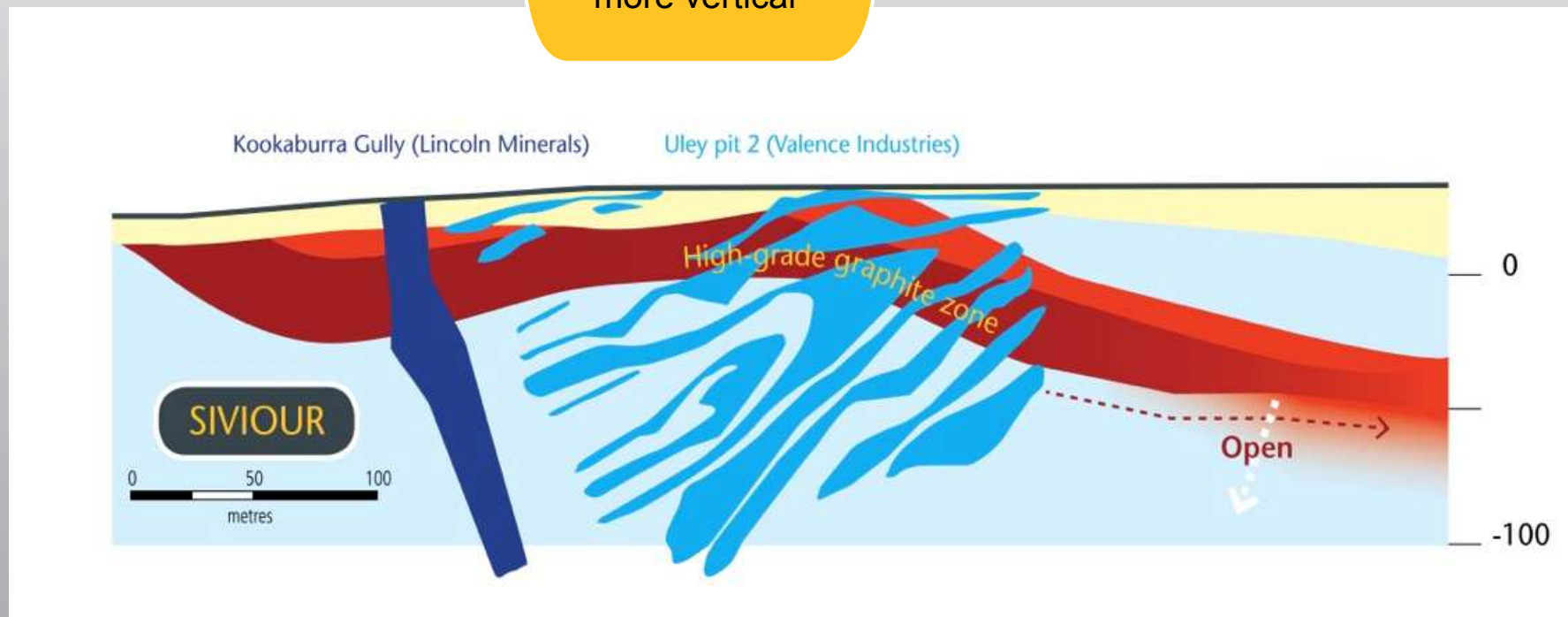


Siviour prospect: Geological cross-section for north-south Section 631800E, showing graphite-mineralised zones

# Siviour deposit – flat-lying and near-surface



Other graphite deposits are deeper, more vertical

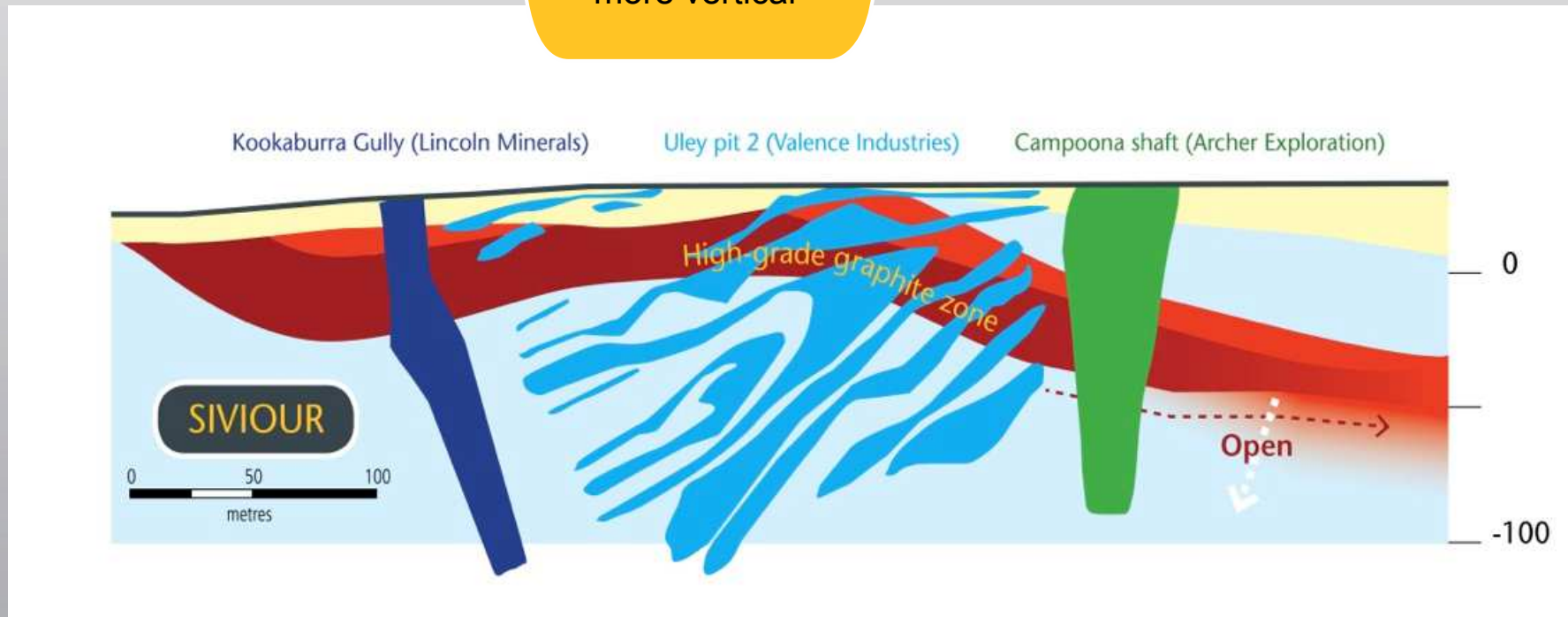


Siviour prospect: Geological cross-section for north-south Section 631800E, showing graphite-mineralised zones

# Siviour deposit – flat-lying and near-surface



Other graphite deposits are deeper, more vertical

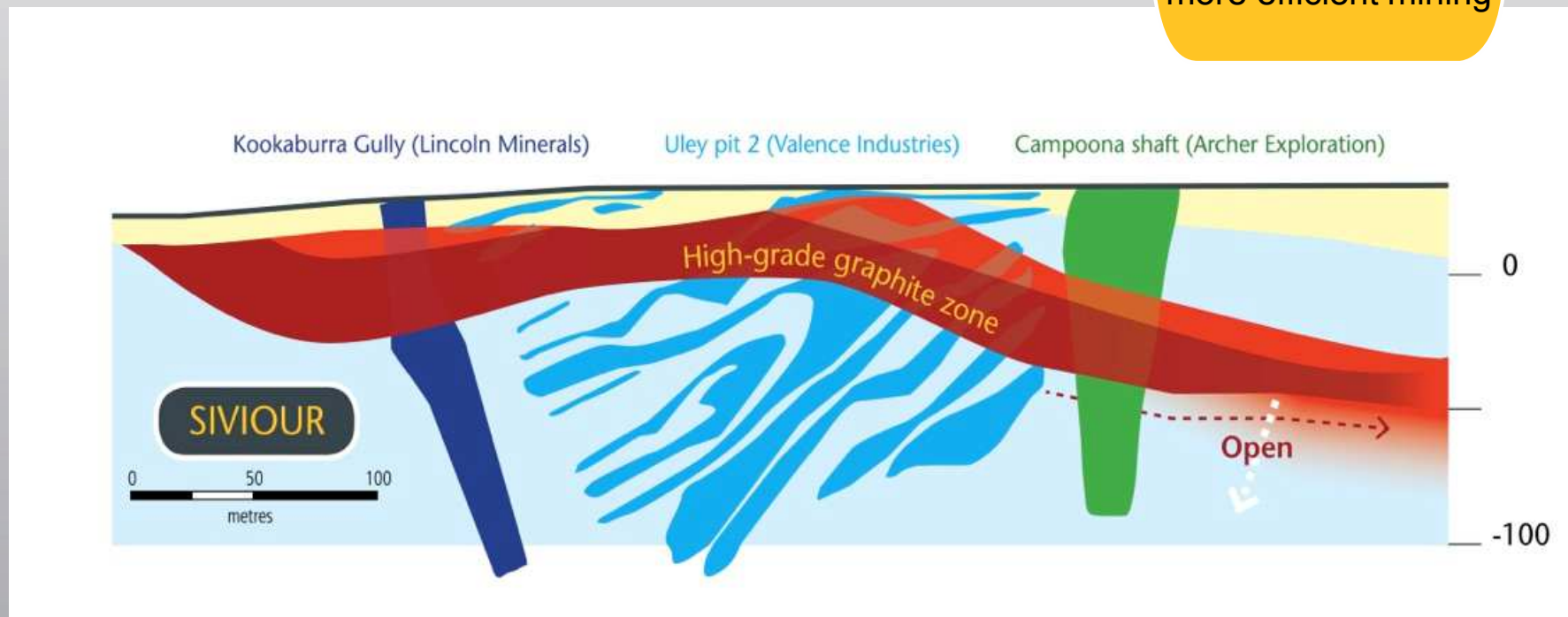


Siviour prospect: Geological cross-section for north-south Section 631800E, showing graphite-mineralised zones

# Siviour deposit – flat-lying and near-surface



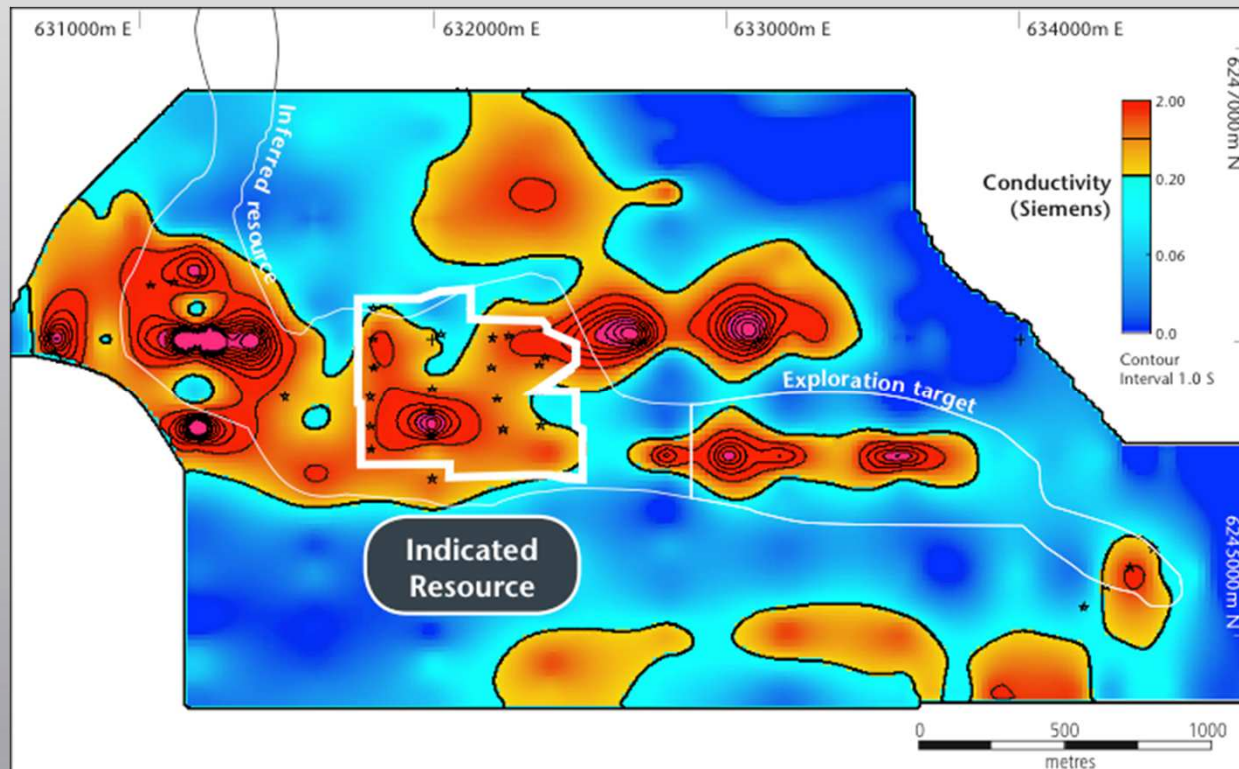
Siviour offers lower-strip ratio, less waste, more efficient mining



Siviour prospect: Geological cross-section for north-south Section 631800E, showing graphite-mineralised zones



# Siviour – ample scope to grow resource



## Siviour remains open at shallow depths

Undrilled high conductivity targets to west of Indicated Resource

Exploration target and new EM anomalies to immediate east

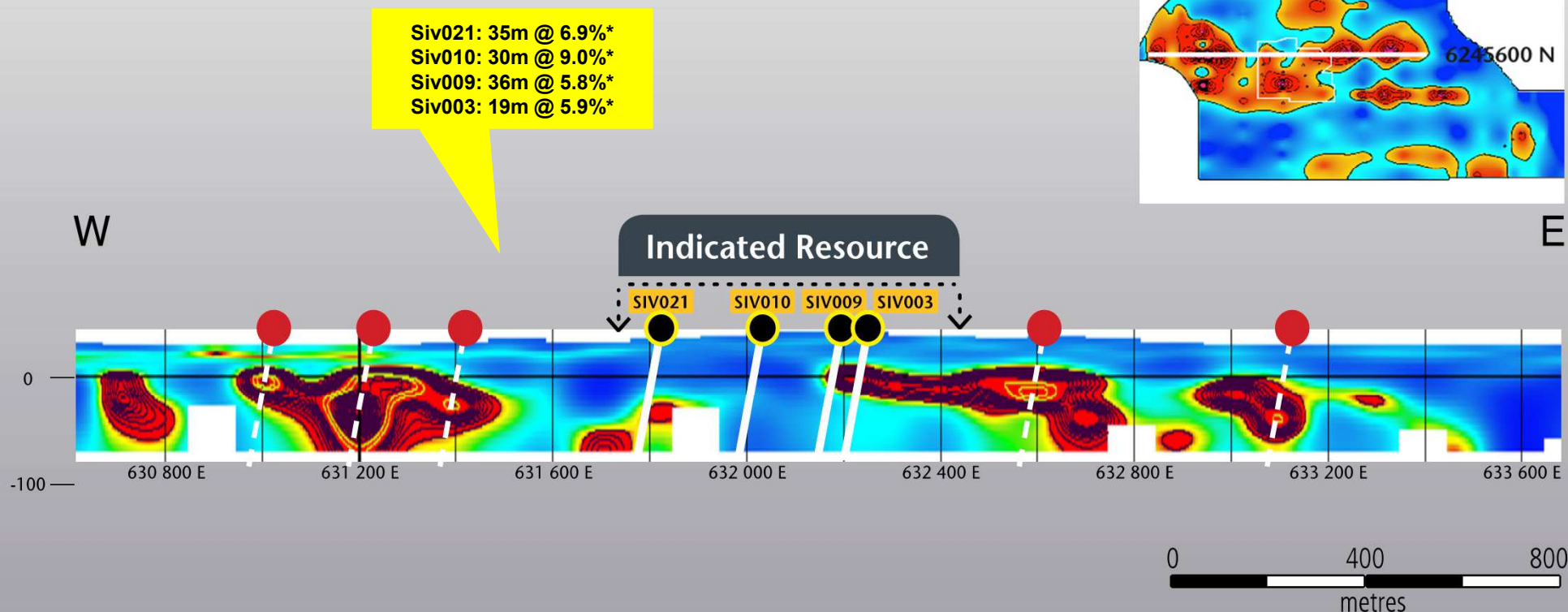
Additional EM targets along-strike from Inferred Resource (to west)

Electromagnetic image showing Indicated and Inferred Resources and exploration target

\* See Appendix 1 of RNU ASX release dated 17 March 2016. The information has not materially changed since being first reported



# Siviour – resource upgrade potential



West-east EM cross-section for Section 6246000N showing existing drill holes and results within Indicated Resource and planned drill holes for current drill program

## High potential to upgrade resource

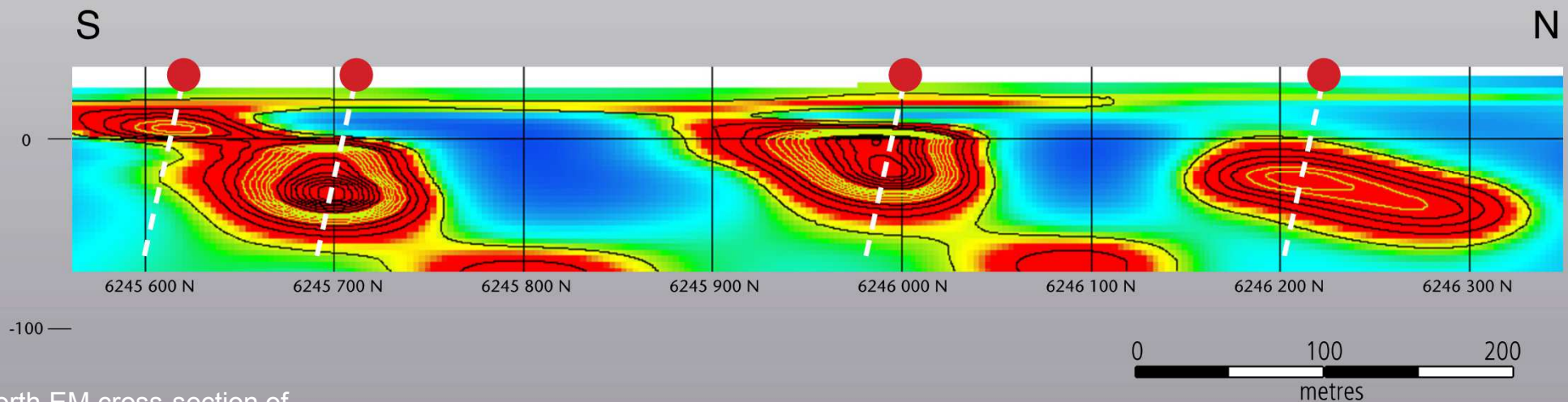
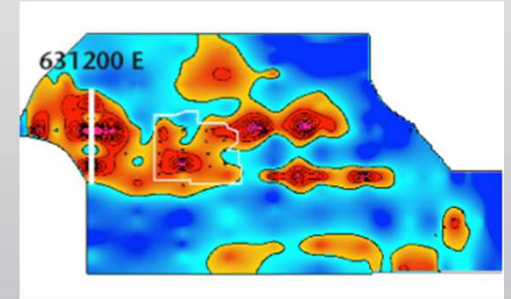
Recent ground EM shows most conductive zones undrilled

Targets for higher grade, thicker graphite

Drilling currently underway

\* See assay results reported in RNU ASX release dated 25 February 2016. The information has not materially changed since first being reported

# Siviour – high-grade drill targets

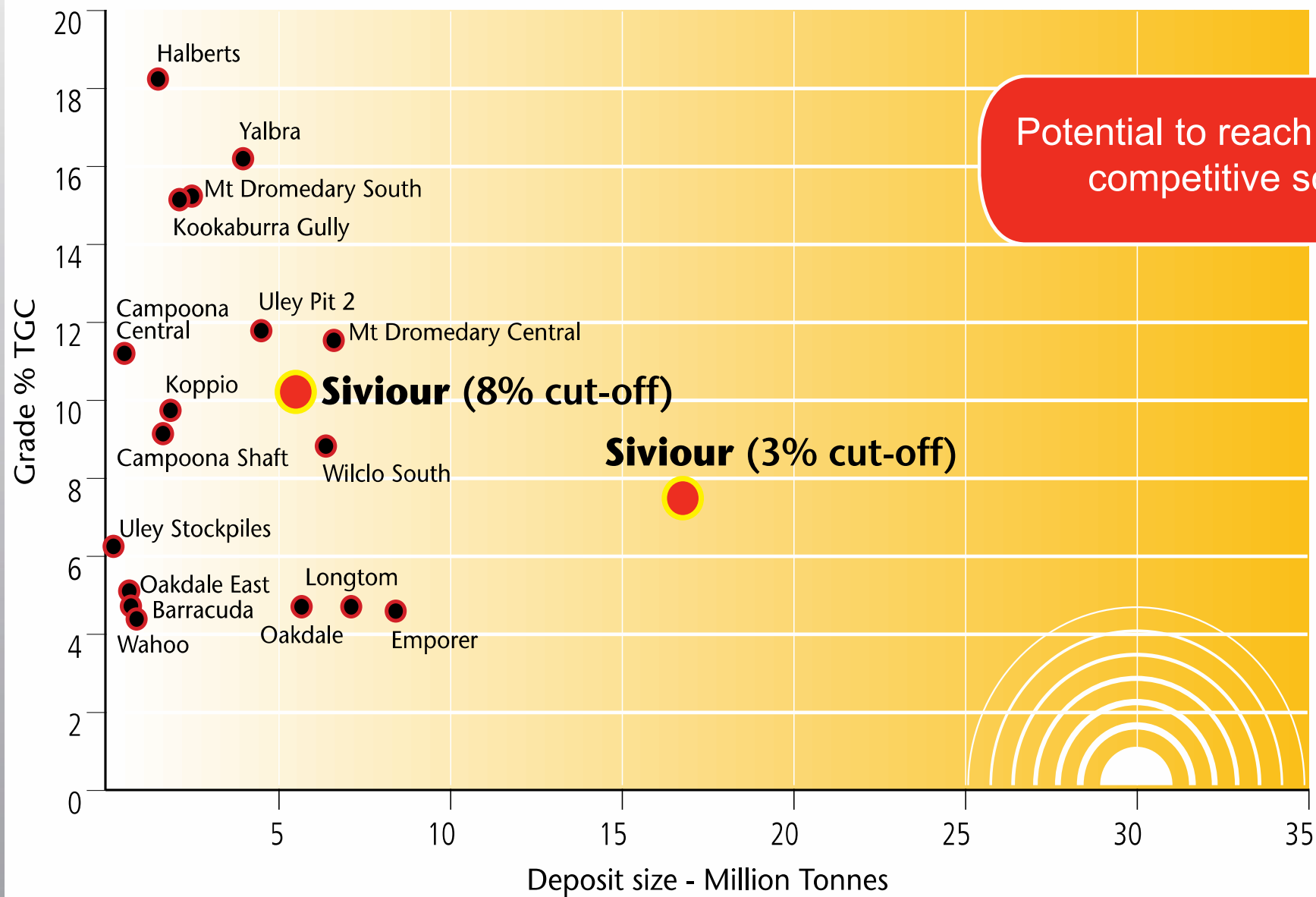


South-north EM cross-section of 631200E, showing northern, central and southern portions of western EM anomaly and planned drill holes

## Drilling underway on largest EM anomaly

Ten times the conductive response of anomaly within Indicated resource

# Siviour versus other Australian graphite deposits



Potential to reach globally competitive scale

# Arno graphite project – flake size



## Petrological testing shows abundance of flake graphite at Siviour

### High proportion of coarse flake

Siviour high-grade drill samples return:

- 62% in super-jumbo (+500 $\mu$ m) category
- Up to 1,600 $\mu$ m

### Strong basis for producing high quality concentrate at Siviour

Comprehensive mineral processing test work, including sighter test work on representative samples from Siviour, currently underway



Petrographic images from Siv014 (17m to 18m)

(source: Pontifex & Associates, 2012)



# Arno graphite project – metallurgy



## Positive preliminary metallurgy tests at adjacent Paxtons prospect

### Simple bench flotation and gravity tests yield positive initial results

- 87% recoveries
- Up to 94.9% purity of concentrates
- Super-jumbo (600 $\mu$ m) graphite

### Comprehensive mineral processing tests at Siviour currently underway

Ample scope to deliver high quality product



Extra large coarse flakes (>>600 $\mu$ m) from diamond core hole (CRD090) at Siviour prospect

# Arno graphite project - conclusions



## **Siviour is large and growing**

Australia's largest graphite deposit, with potential to reach globally competitive scale

## **High-quality coarse flake graphite**

High proportion of valuable jumbo and super-jumbo flake from petrological samples

## **Potential production from Australia**

Offers diversity of supply

## **Multiple near-term catalysts**

Siviour is a new discovery, with upcoming work programs offering immediate opportunities for value enhancement





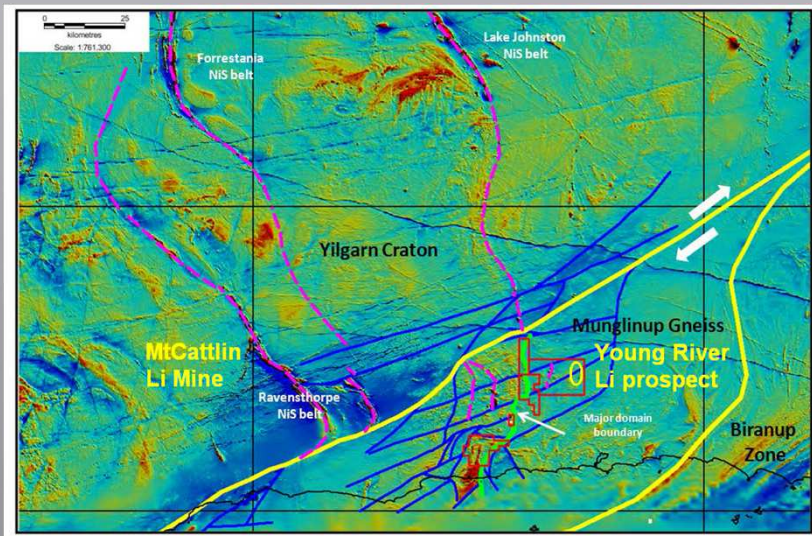
# Munglinup project – lithium and graphite



## High upside potential from lithium and graphite prospects

Young River lithium prospect – elevated lithium in Archean greenstone belt adjacent to Mt Cattlin lithium mine

Drill-ready EM targets adjacent to high-grade Halbert's graphite deposit



Significant lithium mines and deposits in relation to Renascor's Munglinup Project

Regional aeromagnetic image with interpreted greenstone trends (Western Mining Services, 2013)

# Other projects



## Project portfolio includes additional high-upside exploration projects

### Eastern Eyre -- Copper

Advance large-scale copper prospect, with results including 13m at 1.45% Cu, 66 ppm Ag and 0.17% Co

### Olary\* – Lithium/Gold

Elevated lithium in outcropping pegmatites  
Shallow, oxide-gold targets

### Warrior and Frome -- Uranium

Historic uranium project discovered by PNC Exploration

Four Mile-style sandstone-hosted uranium



\* Renascor had previously entered sale agreements to dispose of the Olary project tenements, however, Renascor terminated those agreements in April 2016

# Forward work program



## Renascor intends to fast-track Siviour through development and into production

- High-grade graphite at Arno
- Renascor option to purchase
- Resource delineation drill program
- Flake size and purity
- Initial JORC resource

- Drilling to expand resource\*
- Mineral processing testing
- Scoping study

- Offtake
- Permitting
- Feasibility
- Construction
- Production

\* Currently underway

