

ASX Code: AIV

Issued Capital

802,747,240 ordinary shares (AIV)
1,100,000 unlisted options

Market Capitalisation

\$7.224M (26 July 2016, \$0.009)

Directors

Min Yang (Chairman, NED)
Grant Thomas (Managing Director)
Geoff Baker (NED)
Dongmei Ye (NED)
Craig McPherson (Company Secretary)

About ActivEX

ActivEX Limited is a Brisbane based mineral exploration company committed to the acquisition, identification and delineation of new resource projects through active exploration.

The ActivEX portfolio is focussed on copper and gold projects, with substantial tenement packages in north and southeast Queensland and in the Cloncurry district of northwest Queensland.

The Company also has an advanced potash project in Western Australia where it is investigating optimal leaching methods for extraction and production of potash and by-products.

Suite 3402, Level 34 Riverside Centre
123 Eagle Street
BRISBANE QLD 4000
PO Box 1533 MILTON QLD 4064

admin@activex.com.au
www.activex.com.au

Phone +61 (07) 3236 4188

ABN 11 113 452 896

ACTIVITIES REPORT QUARTER ENDED 30 JUNE 2016

Brisbane-based gold and copper explorer ActivEX Limited (ASX: AIV) ("ActivEX" or "the Company") provides the following summary of activities undertaken during the quarter ended 30 June 2016.

Summary and Highlights

- **Reconnaissance portable XRF soil geochemical surveys completed over areas northeast of Mt Hogan gold mine identifies new gold target, Welcome.**
- **Rock chip sampling at Welcome prospect has returned high grade gold assays in the range 0.57 to 106g/t Au.**
- Welcome prospect is located on the edge of the Mt Hogan granite which is analogous to Mt Hogan abandoned gold mine and is considered a high priority gold target.
- Project generation completed for Ravenswood Gold Project has identified gold targets in King Solomon and Birthday Hills EPMs.
- Portable XRF surveys completed over target areas in King Solomon EPM has defined King Solomon/Rose of Allendale prospects (arsenic anomaly).
- Reconnaissance rock chip sampling completed over several known prospects, returning high grade gold assays at Fanning Downs in the range 2.92 to 370g/t Au and up to 72.4g/t Au at Rose of Allendale prospects.
- Field base at Charters Towers is being established to service Ravenswood, Gilberton and Pentland Gold Projects.
- **ActivEX completed a non-renounceable pro-rata rights issue of fully paid ordinary shares in the capital of the Company.** The Rights Issue closed on 18 May 2016, with subscriptions received from eligible shareholders for approximately 96% of the new securities offered, raising a total of \$1,559,346 (before costs). The funds will be utilised to pursue on-going exploration activity by ActivEX as well as to meet working capital requirements.
- At the end of the June quarter the Company held \$1.475M in cash at bank.

OVERVIEW

Gilberton Gold Project

During the quarter ActivEX announced that reconnaissance portable X-Ray Fluorescence (pXRF) soil geochemical surveys have been completed over target areas immediately northeast of the abandoned Mt Hogan gold mine (Mt Hogan EPM 18615), identifying gold prospect Welcome (ASX announcement 1 June 2016). Attendant rock chip samples have been assayed returning high grade gold assays of up to 106g/t Au at the Welcome prospect. Welcome prospect is located on the edge of the Mt Hogan granite which is analogous to the Mt Hogan abandoned gold mine and is considered a priority gold target.

Ravenswood Gold Project

During the quarter ActivEX announced that reconnaissance portable X-Ray Fluorescence (pXRF) soil geochemical surveys were completed over target areas in King Solomon EPM 18637 (Ravenswood Gold Project) defining King Solomon/Rose of Allandale historic prospects (see ASX announcement 15 June 2016).

Rock chip sampling was also carried out over several known prospects within the King Solomon and Birthday Hills EPMs. A total of 37 rock chip samples were collected (majority quartz veins or gossanous outcrop) and submitted for assay (see ASX announcement 15 June 2016) returning high grade gold assays of up to 72.4g/t Au at Rose of Allandale and 370g/t Au at Fanning Downs (Birthday Hills EPM) historical prospects (over 70% of samples returning values >1g/t Au).

No Occupational, Health and Safety or lost time injuries occurred during operations for the quarter.

CORPORATE

During the quarter ActivEX announced that it had completed a non-renounceable pro-rata rights issue of fully paid ordinary shares in the capital of the Company (Rights Issue, see ASX announcement 23 May 2016). The Rights Issue closed on 18 May 2016, with subscriptions received from eligible shareholders for approximately 96% of the new securities offered, raising a total of \$1,559,346 (before costs).

The Rights Issue offer was for up to approximately 161,703,168 new shares, on the basis of 1 new share for every 4 shares held, at an issue price of \$0.01 per new share, to raise approximately \$1,617,031 (before costs) if fully subscribed.

Entitlement applications were received for 147,531.857 new shares and a further 8,402,701 new shares were applied for as additional shortfall shares.

The remaining shortfall of 5,768,660 new shares may be placed at the discretion of the Directors at not less than the issue price within 3 months of the Closing Date, being 18 August 2016.

The funds will be utilised to pursue on-going exploration activity by ActivEX as well as to meet working capital requirements.

FINANCIAL

At the end of the March quarter the Company held \$1.475M in cash at the bank.

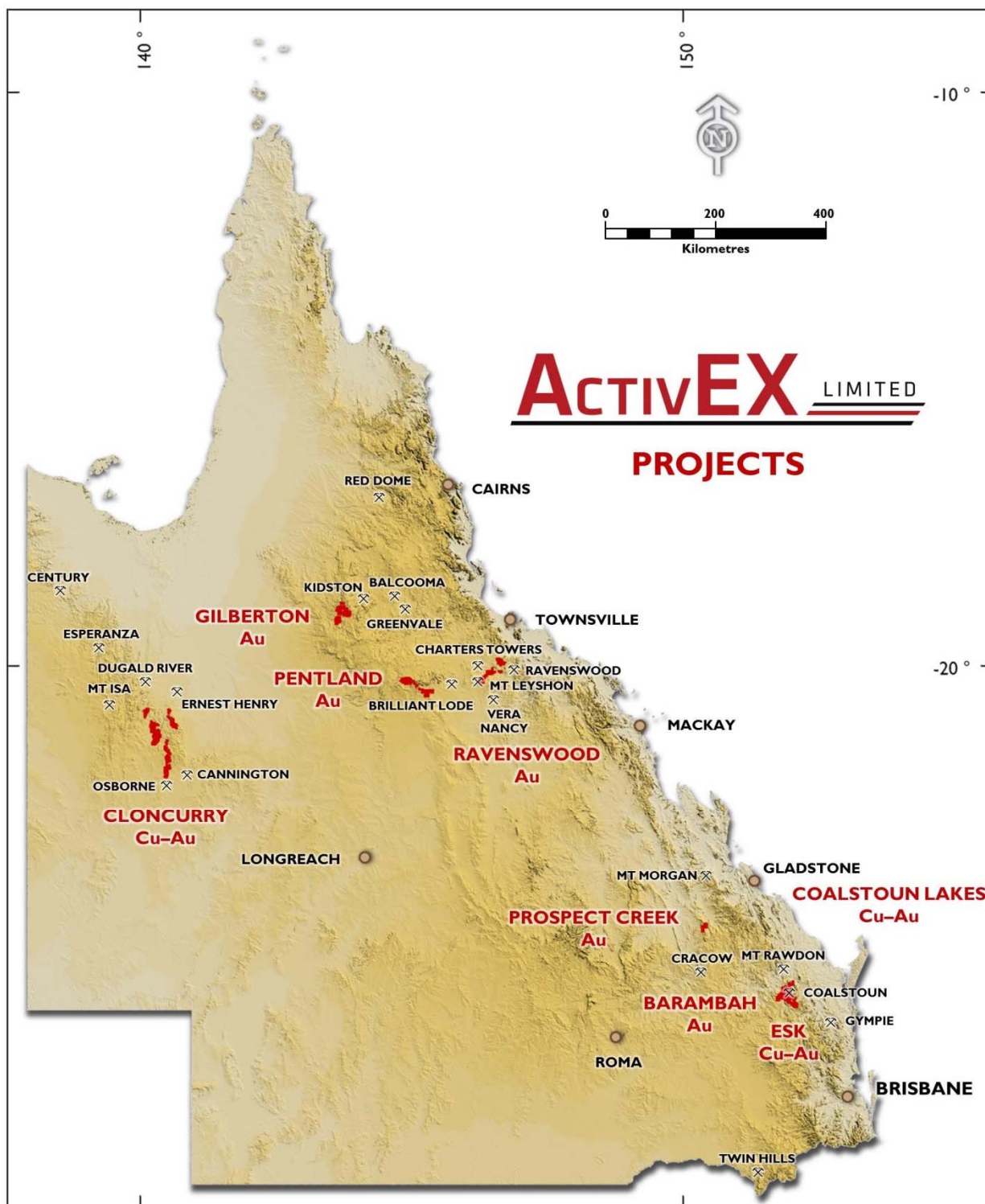


Figure 1. ActivEX Limited Queensland Projects

OPERATIONS

GILBERTON GOLD PROJECT – North Queensland

(EPM 18615, 18623 and 19207, EPM application 26232 – ActivEX 100%, refer Appendix 2)

The Gilberton Gold Project is situated in the Georgetown Province in northeast Queensland, approximately 300km west-northwest of Townsville (Figure 1). The Project consists of EPMs 18615, 18623 and 19207, which comprise a total of 143 sub-blocks and encompass an area of 464km². EPM application 26232 was lodged during the quarter and consists of 27 sub-blocks. ActivEX Limited holds 100% interest in all the tenements.

The Project is located in an area which is prospective for a number of metals and a wide range of deposit styles. The world-class Kidston breccia hosted Au-Ag deposit occurs in similar geological terrain approximately 50km to the northeast (Figure 1).

During the quarter ActivEX announced that reconnaissance portable X-Ray Fluorescence (pXRF) soil geochemical surveys were completed over priority target areas in the Mt Hogan tenement (EPM 18615, Figure 2) immediately northeast of the abandoned Mt Hogan gold mine, identifying new gold prospect Welcome (see ASX announcement 1 June 2016). Portable XRF surveying covered 4.75 km² and comprised a total of 844 readings acquired on east-west traverses spaced 50-100m with a nominal reading interval of 50-100m (Figures 2 and 3).

The Welcome gold prospect extends for over 500m, 1.5km northeast of Mt Hogan gold mine and is defined as having a coherent surface expression of over 20ppm Pb and 40 ppm Cu (maximum pXRF values of 216.52ppm Pb and 1,067.16ppm Cu, Figures 3).

During this phase of field exploration activities 51 rock chip samples were collected (majority quartz veins or gossanous outcrop) and submitted for assay. The rock chip samples have been assayed and returned high gold grades with over 18% of samples returning values >1g/t Au (9 samples, Figure 3, Table 1). Significant assay results include:

- **Welcome** best assays 0.57 to 106g/t Au, 2.39 to 43.3g/t Ag and up to 1,980ppm Pb and 1.35% Cu. Welcome area requires detailed field follow-up during the next phase of exploration activities.

Welcome prospect is located on the edge of the Mt Hogan granite which is analogous to the Mt Hogan abandoned gold mine and is considered a high priority gold target.

Further exploration activities, such as pXRF surveys and focussed rock chip and conventional soil sampling, will be undertaken at Mt Hogan, Gilberton and Percy River EPMs with a view to trenching and channel sampling at multiple targets within the Gilberton Gold Project in late-2016.

ActivEX is in the process of establishing a base at Charters Towers to facilitate field operations at Ravenswood, Gilberton and Pentland Gold Projects.

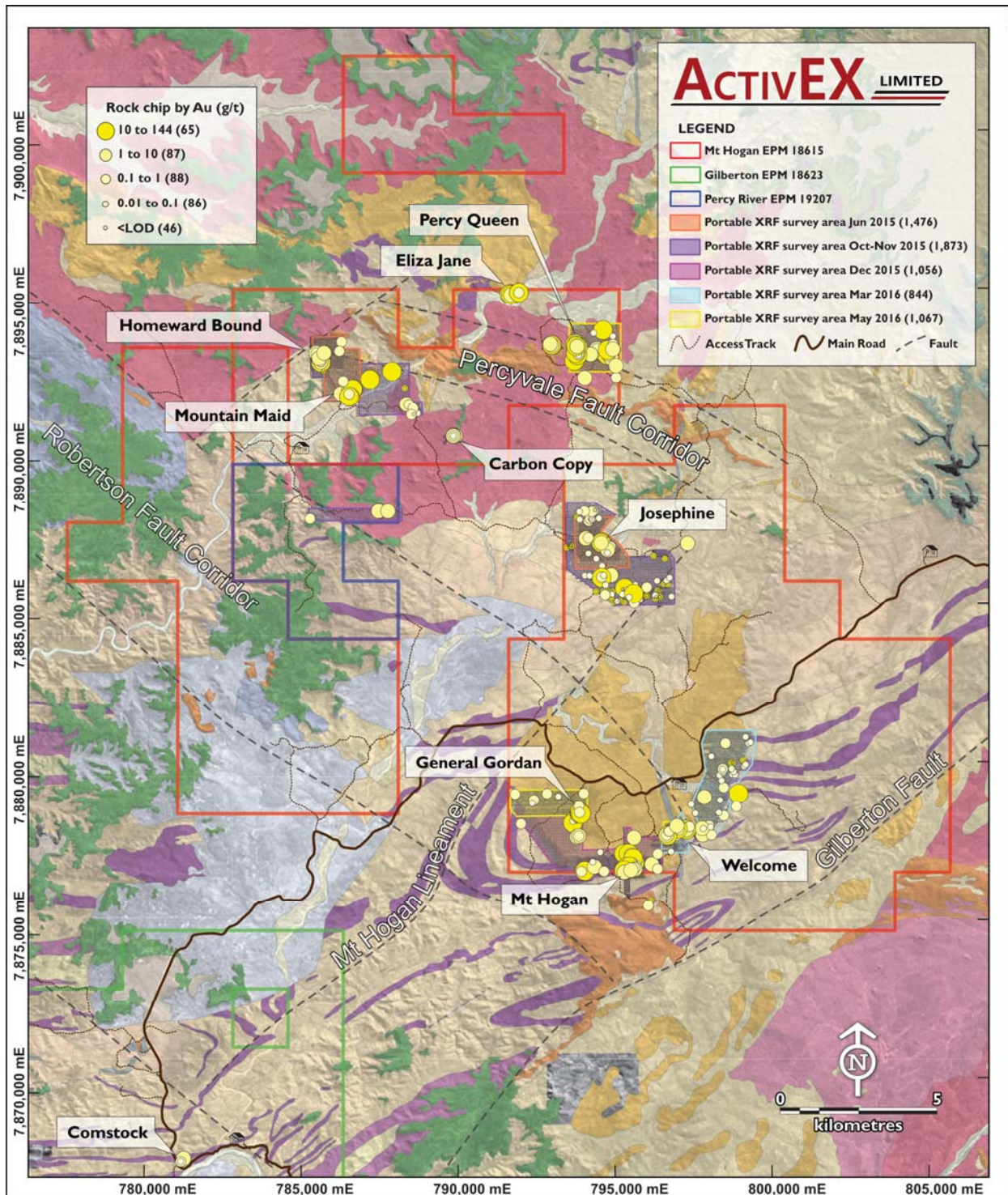


Figure 2. ActivEX Limited Gilberton Gold Project tenement locations, abandoned gold mines, portable XRF surveys and selected rock chip gold assays

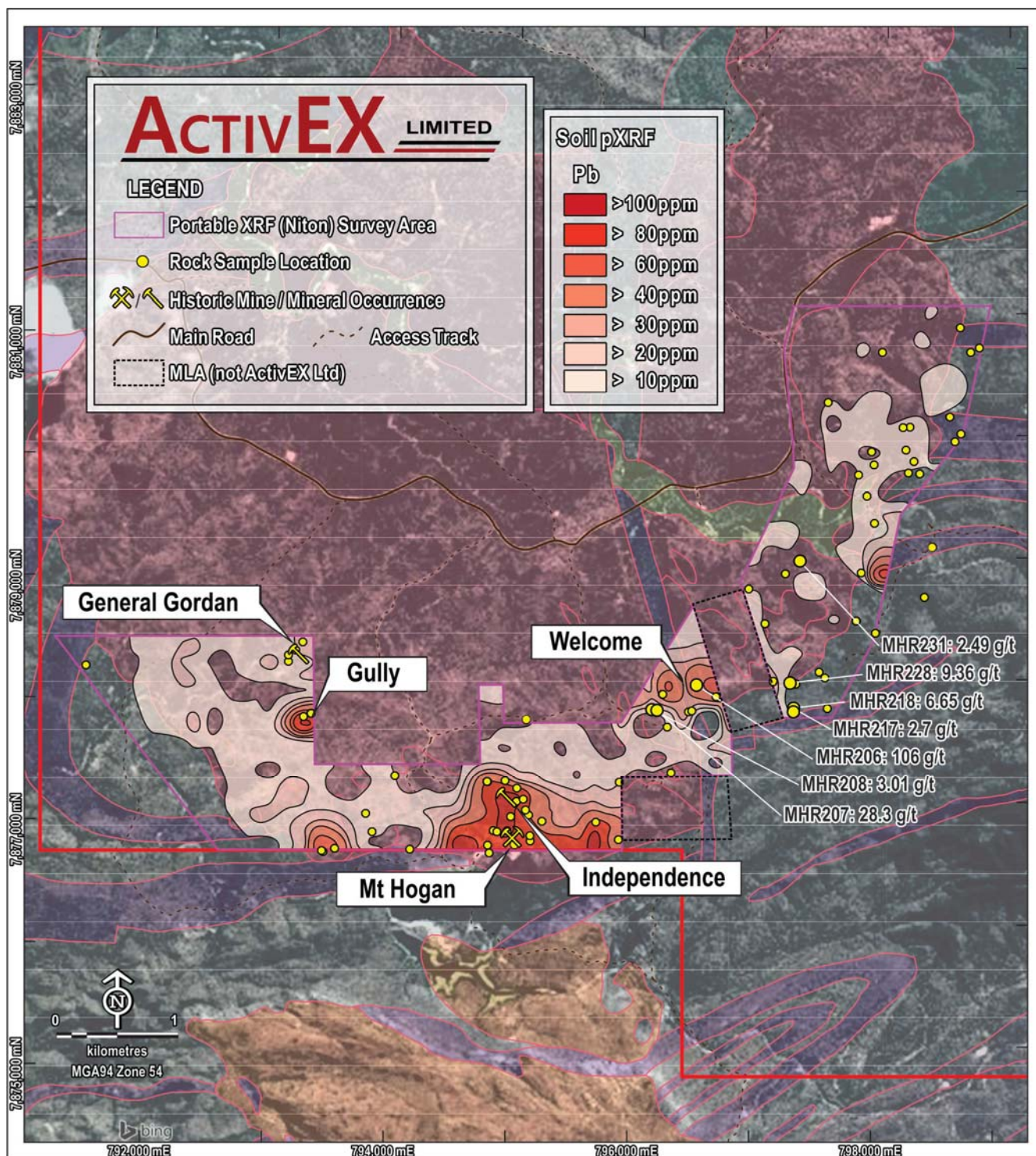


Figure 3. ActivEX Limited Mt Hogan area prospects defined by portable XRF surveys (Lead (ppm)) and selected rock chip gold assays

Table 1. Mt Hogan area rock chip assay results (Welcome prospect)

ID	Easting MGAE Zone 54	Northing MGAN Zone 54	Au g/t	Ag g/t	As ppm	Cu ppm	Pb ppm	Zn ppm	Bi ppm	Mo ppm	Sb ppm	Se ppm	Te ppm
MHR201	795085	7877749	1.96	71.7	18.3	28.4	96.7	6	502	10.05	1.97	9	175.5
MHR202	796237	7877668	0.57	4.1	7.2	79.4	186.5	48	24.8	1.21	0.76	1	7.05
MHR203	796415	7877790	0.04	0.1	21.1	92.9	60.5	182	0.3	1.76	30	1	0.11
MHR204	796441	7877796	0.1	2.39	107.5	68.1	188.5	335	11.55	14.15	43.1	2	4.07
MHR205	796641	7877910	0.02	0.35	5.1	9.6	32.5	16	0.47	1.13	1.12	<LOD	0.14
MHR206	796484	7878005	106	16.35	5.4	65	1470	37	0.95	2.59	3.61	1	27.8
MHR207	796156	7877803	28.3	43.3	49.3	544	682	40	1595	7.37	9.03	1	12.7
MHR208	796117	7877813	3.01	8.6	5.1	2750	99.7	79	12	0.51	1.78	1	1.22
MHR209	796119	7877811	0.76	11.55	34.5	262	1980	16	71.7	1.52	10.9	<LOD	16.85
MHR210	797957	7878403	0.84	0.34	9.1	44.8	24.9	80	14.85	0.4	6.47	1	0.19
MHR211	796202	7877937	0.42	9.92	4.4	13450	126.5	24	4.91	1.15	4.12	1	3.94
MHR212	796206	7877936	0.71	11.55	12.7	9650	383	25	17.8	4.23	6.39	1	8.21
MHR213	798363	7878689	0.3	2.44	335	601	205	302	19.65	3.32	28.2	6	8.03
MHR215	797489	7878093	0.31	0.9	20.7	1780	65.5	31	2.74	1.52	1.3	7	12.8
MHR216	797113	7878024	0.06	0.24	13.1	51.6	17	40	2.03	0.48	1.13	<LOD	0.36
MHR217	797276	7877804	2.7	4.89	70.7	271	301	290	14.55	1.37	4.88	1	0.18
MHR218	797278	7877805	6.65	6.39	10.7	108	2790	2680	0.33	0.6	2.46	<LOD	0.51
MHR219	797553	7877799	0.1	0.66	46.3	19.3	14	41	0.82	44.9	7.33	1	0.09
MHR220	797053	7878494	0.09	0.54	39.3	115	189	43	2.67	2.55	3	2	0.97
MHR221	797052	7878495	0.05	0.21	2.5	40.3	30.7	34	0.44	0.86	0.71	<LOD	0.11
MHR222	797802	7878505	0.01	0.19	15.5	30.3	9.4	53	0.25	4.23	7.51	<LOD	0.05
MHR223	797800	7878505	0.08	0.2	329	156	15.4	186	0.36	6.09	10.6	4	0.08
MHR224	796924	7878782	0.03	0.72	70.1	140.5	638	86	188.5	107.5	6.67	3	67.9
MHR225	797226	7878902	0.05	0.12	3.5	78.1	8.6	73	0.72	1.68	4.53	<LOD	0.26
MHR226	797848	7878900	0.03	0.14	13	12.1	4.7	8	0.71	0.63	1.9	<LOD	0.09
MHR227	796262	7877293	0.02	0.12	10	8	195	25	6.46	4.22	0.97	<LOD	2.4
MHR228	797260	7878008	9.36	31.3	708	900	129.5	20	437	116.5	38.1	34	4.73
MHR229	797298	7878001	0.04	0.4	331	435	19.1	186	1.2	2.32	16.5	2	0.09
MHR230	797536	7878045	0.03	0.07	2.2	11.3	4.1	11	0.7	0.36	1.26	<LOD	0.12
MHR231	797349	7879004	2.49	3.97	553	563	112	120	21.8	162.5	115	8	4.55
MHR232	797965	7879304	0.12	0.74	148	15.8	214	30	3.88	4.48	7.34	5	0.58
MHR233	797906	7879528	0.02	7.07	60.7	29.3	366	2	102.5	4.75	2.7	<LOD	7.04
MHR234	797839	7879698	0.08	0.22	15.6	20.8	49.3	23	2.15	5.09	3.28	1	0.42
MHR235	798248	7879708	0.01	0.57	4.9	11.7	58.6	22	1950	0.88	1.02	<LOD	8.15
MHR236	798341	7879700	0.02	0.11	2.1	27.6	13	72	4.02	0.7	0.28	<LOD	0.24
MHR237	798296	7879801	0.01	0.11	2.3	4.5	55.1	29	7.44	12.05	0.4	1	1.07
MHR238	797968	7879780	0.06	4.33	30.1	293	508	8	234	26	21.2	16	76
MHR239	797952	7879891	0.58	3.35	127	1790	621	177	521	30.2	1.9	7	42.3
MHR240	797949	7879886	0.05	5.67	141.5	755	1325	1330	571	77.3	20.6	9	94.7
MHR241	798232	7879896	0.01	0.6	4	36.4	66	39	8.06	6.74	0.86	1	2.45
MHR242	798635	7879959	0.03	1.33	166.5	596	26.8	41	21	9.8	2.96	10	1.65
MHR243	798267	7880084	<LOD	0.54	9.8	327	100.5	60	151	5.56	2.13	1	18.3
MHR244	798212	7880082	<LOD	0.29	3.3	25.3	94	22	4.05	5.89	0.49	1	1.22
MHR245	797600	7880297	0.01	0.16	247	16.6	15.2	14	1.01	2.38	6.04	1	0.22
MHR246	798684	7880021	0.01	0.24	18	256	9.9	18	3.56	2.94	1.06	2	0.54
MHR247	798597	7880162	<LOD	0.2	2.1	335	27.1	27	7.61	3.74	0.19	2	4.4
MHR248	798052	7880702	0.75	0.85	9.3	20.7	21.7	28	4.15	2.97	1.57	1	3.77
MHR249	798776	7880690	0.01	0.64	356	712	6	52	3.43	2.89	3.87	14	1.84
MHR250	798848	7880725	0.02	0.23	168.5	1240	4.1	96	1.72	2.55	5.76	4	3.53
MHR251	794969	7876725	1.29	3.17	60.9	185.5	430	66	2.76	8.46	6.3	1	0.31
MHR252	798694	7880892	0.03	5.01	26.2	2740	9.3	87	2.11	10.5	0.44	10	4.83

RAVENSWOOD GOLD PROJECT – North Queensland

(EPM 18424, 18426, 18637, 25466 and EPM 25467 – ActivEX 100%, refer Appendix 2)

The Ravenswood Gold Project is situated in the Charters Towers Province in northeast Queensland, approximately 60km south of Charters Towers (Figure 1). The Project consists of EPMs 18424, 18637, 18426, 25466 and 25467, which comprise a total of 117 sub-blocks and encompass an area of 377km². ActivEX Limited holds 100% interest in all the tenements.

The Project is located in the highly prospective Charters Towers – Ravenswood region which has produced over 12Moz of Au and hosts the 3Moz Mt Leyshon deposit as well as the 1Moz Mt Wright Au deposit (Figure 4). Mineralisation styles in the district include mesothermal gold veins (e.g. Charters Towers and Ravenswood Goldfields), breccia hosted gold (e.g. Mt Leyshon, Welcome Breccia) and epithermal gold veins (e.g. the Pajingo group).

During the quarter exploration activities for the 2016 field season commenced at Ravenswood Gold Project with reconnaissance portable X-Ray Fluorescence (pXRF) soil geochemical surveys carried out over target areas in the King Solomon tenement (EPM 18637, Figure 4) defining King Solomon/Rose of Allandale historic prospects (see ASX announcement 15 June 2016). The pXRF surveying covered approximately 9.8 km² and comprised a total of 1,117 readings acquired on east-west traverses spaced 100-200m with a nominal reading interval of 50m and covered a number of mineral occurrences (Figure 5).

The pXRF survey has confirmed and tightly defined zones of anomalous arsenic (gold pathfinder element) over mineral occurrences in the King Solomon – Rose of Allandale area.

The **King Solomon – Rose of Allandale anomaly** extends for over 500m and is defined as having a surface expression of over 5ppm As (maximum pXRF values of 32.69ppm As, Figure 5). Rock chip samples from King Solomon and Rose of Allandale prospects returned high grades, with best results in the range 20.8 to 72.4g/t Au, 50.8 to 154g/t Ag, 1.095 to 1.695% Pb and up to 0.57% Zn.

Fanning Downs is a known historical prospect. Best rock chip results in the range 2.92 to 370g/t Au, 41.4 to 229g/t Ag, 3.01 to 20.7ppm Hg and up to 4.32% Pb.

Sunset is a known historical prospect approximately 500m southwest of Fanning Downs. Rock chip samples from Sunset returned high grades, with best results in the range 33.3 to 96.2g/t Au, 11.6 to 40.5g/t Ag, and up to 1.555% Pb.

During this phase of field exploration activities 37 rock chip samples were collected (majority quartz veins or gossanous outcrop) and submitted for assay. The rock chip grab samples have been assayed and returned high grades with over 70% of the samples > 1g/t Au with an average of 23g/t Au and 24.5g/t Ag (Figure 5, Tables 2 and 3). Significant assay results include:

- **Fanning Downs** best assays 1.06 to 370g/t Au
- **Sunset** best assays 0.85 to 96.2g/t Au
- **Rose of Allandale** best assays 8.2 to 72.4.g/t Au
- **King Solomon** best assays 1.67 to 11.85g/t Au
- **Regional samples** best assays 5.94 to 12.5g/t Au

Further exploration activities, such as pXRF surveys and focussed rock chip and conventional soil sampling, will be undertaken at Mt Leyshon, King Solomon, Birthday Hills, Cornishman and Charlie Creek EPMs with a view to trenching and channel sampling at multiple targets within the Gilberton Gold Project in late-2016.

ActivEX is in the process of establishing a base at Charters Towers to facilitate field operations at Ravenswood, Gilberton and Pentland Gold Projects.

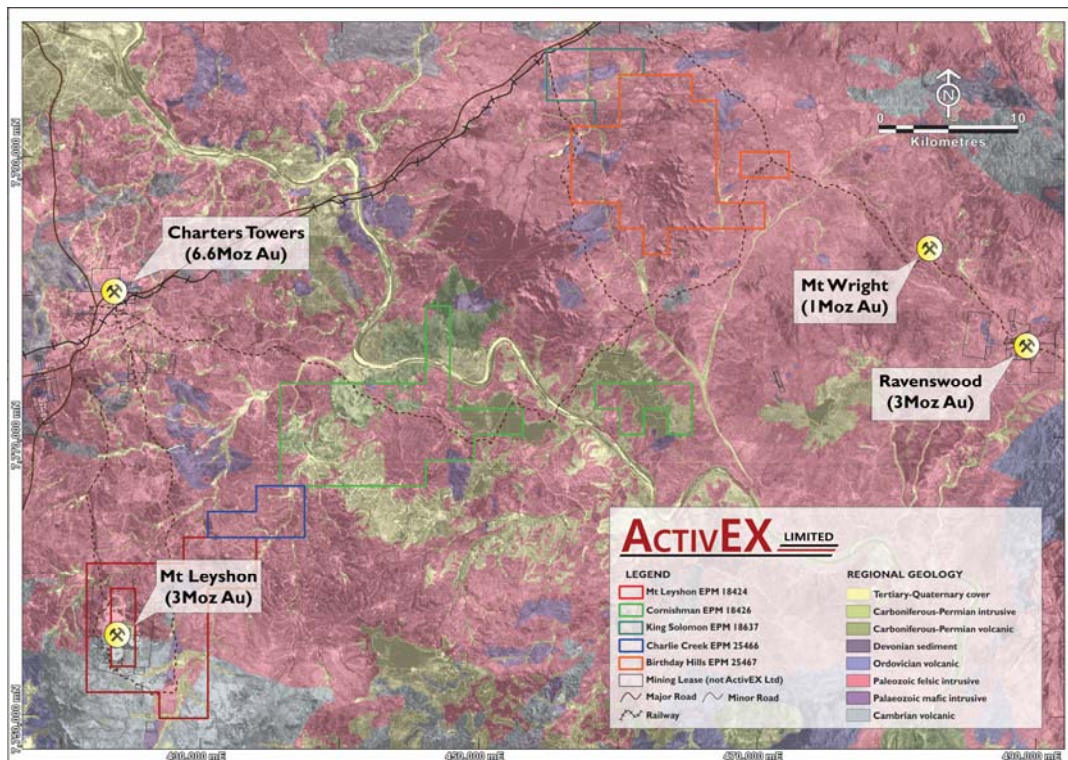


Figure 4. ActivEX Limited Ravenswood Gold Project tenement locations, with regional gold deposits

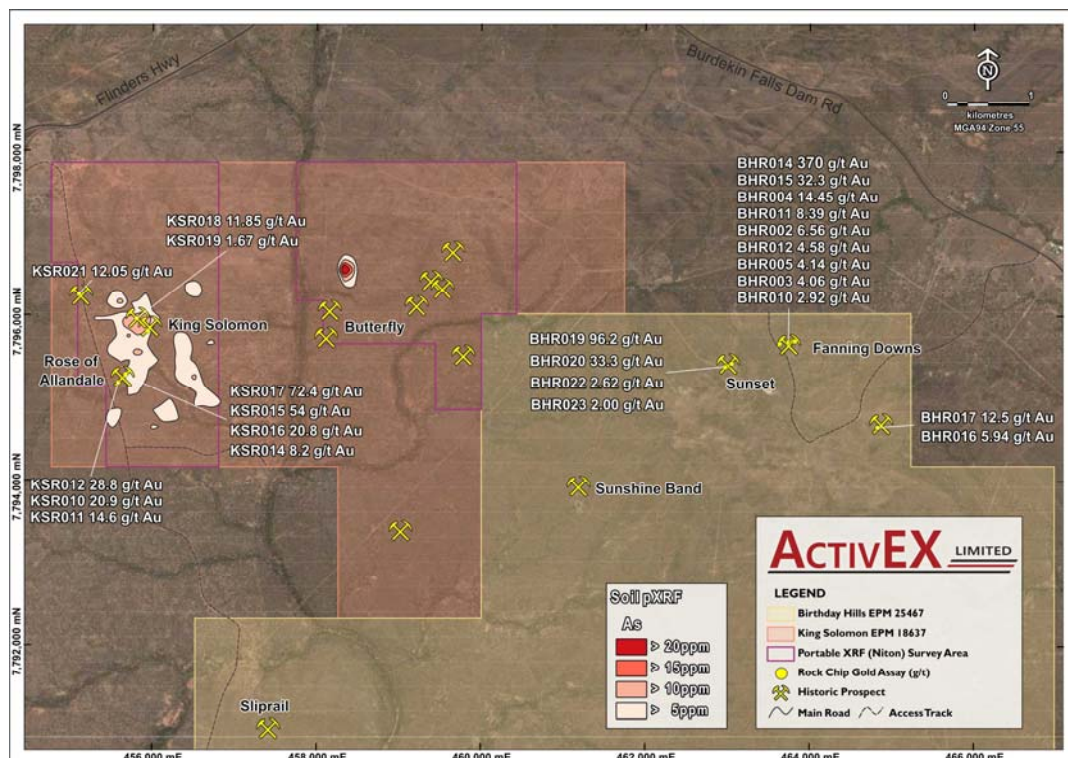


Figure 5 ActivEX Limited King Solomon area prospects defined by portable XRF surveys (Arsenic (ppm)) and selected rock chip gold assays

Table 2. King Solomon EPM Rock Chip Assay Results

ID	Easting MGAE Zone 55	Northing MGAN Zone 55	Au g/t	Ag g/t	As ppm	Cu ppm	Pb ppm	Zn ppm	Bi ppm	Mo ppm	Sb ppm	Hg ppm	Te ppm
KSR010	455581	7795182	20.9	30.4	8990	924	10950	117	0.54	2.27	96.9	0.149	-0.05
KSR011	455582	7795183	14.6	12.5	13850	598	2800	25	0.29	2.24	148	0.057	-0.05
KSR012	455580	7795184	28.8	15.4	21500	575	3820	49	0.39	1.48	195	0.088	-0.05
KSR013	455662	7795267	0.39	3.99	217	95.6	72.4	65	0.09	2.1	22.9	0.03	-0.05
KSR014	455662	7795264	8.2	21.7	5160	197	988	582	0.15	0.86	61.3	0.131	-0.05
KSR015	455663	7795267	54	50.8	1630	540	16950	67	0.77	1.67	40.5	0.692	0.05
KSR016	455664	7795266	20.8	152	7490	444	2100	73	0.1	0.56	268	0.366	-0.05
KSR017	455671	7795285	72.4	154	12850	619	6200	5710	0.39	0.56	125	1.39	-0.05
KSR018	455804	7795955	11.85	1.82	98.7	19	232	94	0.05	0.45	1.5	0.124	0.15
KSR019	455804	7795955	1.67	1.04	52.2	19.4	276	26	0.08	4.72	1.53	0.072	0.07
KSR020	455939	7795806	0.36	1.49	421	8.4	29.1	16	0.03	0.25	7.21	0.012	-0.05
KSR021	455103	7796250	12.05	1.23	30.1	122.5	820	108	1.21	1.63	88.8	0.486	0.11

Table 3. Birthday Hills EPM Rock Chip Assay Results

ID	Easting MGAE Zone 55	Northing MGAN Zone 55	Au g/t	Ag g/t	As ppm	Cu ppm	Pb ppm	Zn ppm	Bi ppm	Mo ppm	Sb ppm	Hg ppm	Te ppm
BHR001	463629	7795662	1.06	0.79	77.9	3.5	172	14	6.66	0.51	0.73	0.01	1.84
BHR002	463632	7795659	6.56	5.77	595	21.3	620	41	18.55	1.83	1.49	0.196	33.8
BHR003	463631	7795661	4.06	1.59	1905	32.2	2510	435	30.2	5.43	7.45	0.04	95.2
BHR004	463630	7795657	14.45	14.3	1060	16.6	1620	268	31.1	2.56	5	0.368	36.3
BHR005	463632	7795665	4.14	6.36	1005	32.4	413	285	12.4	1.92	5.21	0.809	14.25
BHR006	463739	7795687	0.68	2.31	117	25.5	797	112	3.53	0.71	0.93	0.023	1.67
BHR007	463740	7795687	0.81	1.79	78.8	4.6	150.5	20	0.85	0.33	0.86	0.018	0.82
BHR008	463739	7795685	0.48	5.52	90.3	31.7	847	292	0.65	0.35	1.4	0.067	0.77
BHR009	463780	7795693	0.4	0.28	1080	94.7	196	438	8.56	0.86	3.14	0.009	13.45
BHR010	463783	7795693	2.92	5.69	434	109.5	4270	590	33.8	0.88	2.16	0.014	17.15
BHR011	463790	7795693	8.39	13.8	618	41.1	876	389	3.74	2.52	1.97	0.078	6.66
BHR012	463806	7795695	4.58	15	594	39.1	1195	406	2.13	2.06	7.34	0.34	2.78
BHR013	463805	7795696	1.15	3.71	114	12.3	247	117	0.88	0.42	1.94	0.113	0.53
BHR014	463819	7795694	370	229	6690	330	43200	1590	239	3.63	51.7	20.7	58.9
BHR015	463820	7795694	32.3	41.4	312	50.7	8490	420	205	0.84	9.91	3.01	45.9
BHR016	464826	7794657	5.94	2.18	41.1	156.5	405	2520	2.54	0.18	2.1	0.467	0.82
BHR017	464825	7794654	12.5	19.65	534	50.8	3250	382	58.6	0.53	4.27	1.57	29.5
BHR018	464826	7794654	0.28	0.48	13.1	23.8	103	52	1.78	0.27	0.81	0.107	0.5
BHR019	463052	7795427	96.2	40.5	1100	843	15550	680	2.06	4.46	30	0.619	12
BHR020	463049	7795426	33.3	16.75	215	27.3	938	287	2.41	0.8	2.07	0.571	1.01
BHR021	462994	7795395	0.85	5.22	67.6	15.1	1450	1550	4.98	0.34	1.41	0.429	0.68
BHR022	462994	7795395	2.62	6.44	186	83.5	1455	585	0.38	0.46	3.14	0.66	0.77
BHR023	462972	7795384	2	8.76	133.5	79.2	1275	242	0.26	0.37	2.24	0.629	0.54
BHR024	462974	7795384	0.65	0.77	93.6	34.6	359	293	0.26	0.26	1.44	0.1	0.11
BHR025	462969	7795384	0.69	11.6	131	89.5	1905	262	0.42	1.07	9.5	0.275	0.66

For further information contact:

Mr Grant Thomas, Managing Director

or Mr Craig McPherson, Company Secretary

Appendix 1

Declarations under JORC 2012 and JORC Tables

Previous Disclosure - 2012 JORC Code

Certain Information relating to Mineral Resources, Exploration Targets and Exploration Data associated with the Company's projects in this June 2016 Quarterly Report has been extracted from the following ASX announcements:

- ASX announcement titled "Ravenswood Gold Project Exploration Results" dated 15 June 2016;
- ASX announcement titled "Gilberton Gold Project Welcome Prospect Exploration Results" dated 1 June 2016;
- ASX announcement titled "Gilberton and Ravenswood Gold Projects Exploration Field Activities Commenced for 2016" dated 31 March 2016;
- ASX announcement titled "Gilberton Gold Project Mt Hogan Exploration Results" dated 3 February 2016;
- ASX announcement titled "Gilberton Gold Project Mount Hogan EPM – New Prospects Outlined and High Grade Rock Assays up to 144g/t Au" dated 18 January 2016; and
- ASX announcement titled "Gilberton Gold Project Mount Hogan EPM – Gold Targets and High Grade Rock Assays" dated 30 September 2015;

Copies of these reports are available to view on the ActivEX Limited website www.activex.com.au. These reports were issued in accordance with the 2012 Edition of the JORC Australasian Code for Reporting of Exploration Results, Mineral Resources and Ore Reserves. The Company confirms that it is not aware of any new information or data that materially affects the information included in the original market announcements. The Company confirms that the form and context in which the Competent Person's findings are presented have not been materially modified from the original market announcements.

Appendix 2

List of Exploration/Mining Tenements held by ActivEX Limited at 30 June 2016

(in accordance with ASX Listing Rule 5.3.3)



Project Name	Tenement Name	EPM	Status	Granted	Expires	Holder	Details	Interest at start of quarter	Interest at end of quarter	Sub-blocks at start of quarter	Sub-blocks at end of quarter
Southeast Queensland											
Barambah Gold	Barambah	14937	Granted	14-Mar-05	13-Mar-17	ActivEX Limited and Norton Gold Fields	Purchase of Norton Gold Fields' interest in progress	75%	75%	9	9
	One Mile	18732	Granted	15-Oct-10	14-Oct-20	ActivEX Limited		100%	100%	16	16
Esk Copper and Gold	Boobyjan	14476	Granted	08-Jun-04	07-Jun-17	ActivEX Limited		100%	100%	23	23
	Dadamarine	14979	Granted	12-Apr-05	11-Apr-20	ActivEX Limited		100%	100%	15	15
	Blairmore	16265	Granted	04-Sep-07	03-Sep-17	ActivEX Limited		100%	100%	40	40
	Ban Ban	16327	Granted	31-Jul-07	30-Jul-17	ActivEX Limited		100%	100%	12	12
	Stockhaven	18717	Granted	13-Oct-10	12-Oct-20	ActivEX Limited		100%	100%	26	26
Coalstoun Lakes Copper and Gold	Coalstoun	14079	Granted	23-Oct-03	22-Oct-17	ActivEX Limited		100%	100%	57	57
Prospect Gold	Prospect Creek	14121	Granted	03-Aug-05	02-Aug-20	ActivEX Limited		100%	100%	26	26
Northwest Queensland											
Cloncurry Copper and Gold	Mt Agate	14955	Granted	29-Jun-06	28-Jun-21	ActivEX Limited		100%	100%	55	55
	Florence Creek	15285	Granted	30-Oct-07	29-Oct-17	ActivEX Limited		100%	100%	51	51
	Malbon	17313	Granted	24-May-10	23-May-18	ActivEX Limited		100%	100%	9	9
	Florence Flat	17805	Granted	21-Apr-11	20-Apr-21	ActivEX Limited		100%	100%	5	5
	Brightlands	18511	Granted	30-Apr-12	29-Apr-17	ActivEX Limited		100%	100%	24	24
	Selwyn East	18073	Granted	19-Sep-11	18-Sep-21	ActivEX Limited		100%	100%	66	66
	Concorde	25192	Granted	16-Dec-14	15-Dec-19	ActivEX Limited		100%	100%	21	21
	Upper Mort	25194	Granted	16-Dec-14	15-Dec-19	ActivEX Limited		100%	100%	6	6
	Heathrow East	25454	Granted	24-Dec-14	23-Dec-19	ActivEX Limited		100%	100%	11	11
	North Camel Dam	25455	Granted	01-May-15	30-Apr-20	ActivEX Limited		100%	100%	8	8
	Camel Hill	17454	Granted	23-Jan-12	22-Jan-17	ActivEX Limited		100%	100%	8	8
	Robur	18852	Granted	10-Aug-12	09-Aug-17	ActivEX Limited		100%	100%	45	45
Bulonga	18053	Granted	27-Apr-12	26-Apr-17	ActivEX Limited		100%	100%	29	29	
North Queensland											
Gilberton Gold	Percy River	19207	Granted	13-Dec-12	12-Dec-17	ActivEX Limited		100%	100%	7	7
	Mt Hogan	18615	Granted	19-Jun-13	18-Jun-18	ActivEX Limited		100%	100%	96	96
	Gilberton	18623	Granted	08-Apr-14	07-Apr-19	ActivEX Limited		100%	100%	40	40
	Gum Flat	26232	Application			ActivEX Limited		0%	100%	0	27
Pentland Gold	Pentland	14332	Granted	10-Dec-04	09-Dec-19	ActivEX Limited		100%	100%	39	39
	Oxley Creek	15055	Granted	11-Jan-06	10-Jan-21	ActivEX Limited		100%	100%	25	25
	Norwood South	15185	Granted	03-Aug-06	02-Aug-21	ActivEX Limited		100%	100%	18	18
Ravenswood Gold	Mt Leyshon	18424	Granted	08-May-12	07-May-17	ActivEX Limited		100%	100%	29	29
	King Solomon	18637	Granted	17-Aug-12	16-Aug-17	ActivEX Limited		100%	100%	8	8
	Cornishman	18426	Granted	16-Dec-14	15-Dec-19	ActivEX Limited		100%	100%	40	40
	Charlie Creek	25466	Granted	14-Oct-14	13-Oct-19	ActivEX Limited		100%	100%	6	6
	Birthday Hills	25467	Granted	19-Mar-15	18-Mar-20	ActivEX Limited		100%	100%	34	34
Western Australia											
Lake Chandler Potash	Lake Chandler	M77/22	Granted	17-Jan-85	16-Jan-27	ActivEX Limited		100%	100%	359 ha	359 ha
	Reward Lake	P77/3977	Application			ActivEX Limited	Withdrawn 30/06/2016	100%	0%	25 ha	0