



Saracen

Saracen Mineral Holdings Limited



# A growing mid-tier gold miner

**RALEIGH FINLAYSON**  
MANAGING DIRECTOR

Diggers & Dealers Mining Forum  
August 2016



# Qualification



This presentation has been prepared by Saracen Mineral Holdings Limited (Saracen or the Company) based on information from its own and third party sources and is not a disclosure document. No party other than the Company has authorised or caused the issue, lodgement, submission, despatch or provision of this presentation, or takes any responsibility for, or makes or purports to make any statements, representations or undertakings in this presentation.

You should be aware that as an Australian company with securities listed on the ASX, the Company is required to report reserves and resources in Australia in accordance with the Australasian Code for Reporting of Exploration Results, Mineral Resources and Ore Reserves (The JORC Code 2012 Edition ) ("JORC Code"). You should note that while the Company's reserve and resource estimates comply with the JORC Code, they may not comply with the relevant guidelines in other countries.

This is a presentation about geology, geoscientific interpretation, geoscientific speculation, gold deposits, gold potential, engineering, infrastructure, potential values, costs, risks, and related matters pertinent to Saracen's present and future activities as a publicly listed mineral exploration and production company. It includes forecasts, predictions, targets and estimates of future expenditures which may vary over time.

It is uncertain if further exploration will result in the determination of a Resource or Reserve. Where exploration, evaluation, operational and feasibility study expenditure estimates and budgets amounts are presented herein, ongoing prioritisation and scaling of expenditures will be subject to results and, where applicable, scheduling changes. Targeted production and other outcomes are subject to change, and may not eventuate, depending on the results of ongoing performance and assessment of data. All Reserves and Resources as referred to herein are in accordance with the JORC Code. Refer to last slide of this presentation for the relevant Competent Person statements. Resources are inclusive of Reserves.

Certain statements contained in the Presentation Materials, including information as to the future financial or operating performance of the Company and its projects, are forward looking statements. Such forward looking statements:

- a) are necessarily based upon a number of estimates and assumptions that, while considered reasonable by the Company, are inherently subject to significant technical, business, economic, competitive, political and social uncertainties and contingencies;
- b) involve known and unknown risks and uncertainties that could cause actual events or results to differ materially from estimated or anticipated events or results reflected in such forward looking statements; and
- c) may include, among other things, statements regarding estimates and assumptions in respect of prices, costs, results and capital expenditure, and are or may be based on assumptions and estimates related to future technical, economic, market, political, social and other conditions.

The Company disclaims any intent or obligation to publicly update any forward looking statements, whether as a result of new information, future events or results or otherwise. The words "believe", "expect", "anticipate", "indicate", "contemplate", "target", "plan", "intends", "continue", "budget", "estimate", "may", "will", "schedule" and similar expressions identify forward looking statements.

All forward looking statements contained in the Presentation Materials are qualified by the foregoing cautionary statements. Recipients are cautioned that forward looking statements are not guarantees of future performance and accordingly recipients are cautioned not to put undue reliance on forward looking statements due to the inherent uncertainty therein. The Presentation Materials do not purport to be all inclusive or to contain all information about the Company.

This presentation is not a prospectus, disclosure document or other offering document under Australian law or under any other law. It is provided for information purposes and is not an invitation nor offer of shares for subscription, purchase or sale in any jurisdiction.

Take care to question and carefully evaluate any judgments you might make, on the basis of the Presentation Materials, as to the value of Saracen and its securities. This presentation is not intended to provide the sole or principal basis of any investment or credit decision or any other risk evaluation and may not be considered as a recommendation by Saracen or its officers. Any investor reading the Presentation Materials should determine its interest in acquiring securities in Saracen on the basis of independent investigations that it considers necessary, prudent or desirable.

Saracen and its officers do not accept any liability for any loss or damage suffered or incurred by any investor or any other person or entity however caused (including negligence) relating in any way to this presentation including, without limitation, the information contained in it, any errors or omissions however caused by any other person or entity placing any reliance on the Presentation Materials, its accuracy or reliability.

# Corporate overview



## Corporate structure (ASX:SAR)

Shares	800.8m	At 2 August 2016
Share price	A\$1.76	
Market cap	A\$1.4b (US\$1.05b)	
Liquidity	30-day ADV 11.2m shares	
Major indices	ASX200, GDXJ, MSCI Small cap	At 30 Jun 2016
Cash and bullion	<b>A\$40m (US\$30m)</b>	
Debt	<b>Nil</b>	As at 30 Jun 2015
Hedging	283koz @ A\$1,548/oz or -19% of Reserve	
Mineral Resources	7.6 Moz	
Ore Reserves	1.5 Moz	

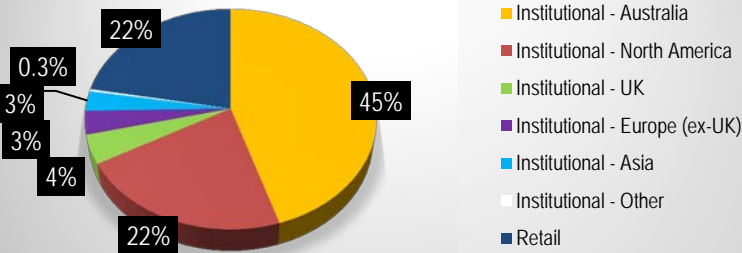
## Board

Non-Executive Chairman	Geoff Clifford
Managing Director	Raleigh Finlayson
Non-Executive Director	Mark Connelly
Non-Executive Director	Martin Reed
Non-Executive Director	Samantha Tough

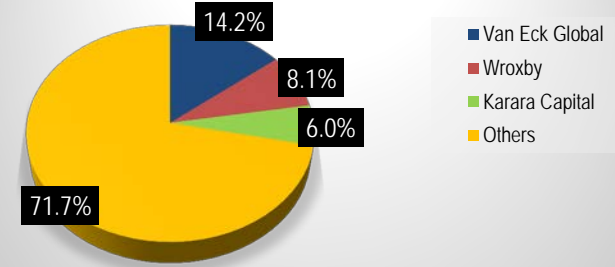
## Executive

Chief Financial Officer	Gerry Kaczmarek
Chief Operating Officer	Craig Bradshaw
Chief Geologist	Daniel Howe
Corporate Development Officer	Troy Irvin

### Ownership geographic



### Substantial shareholders

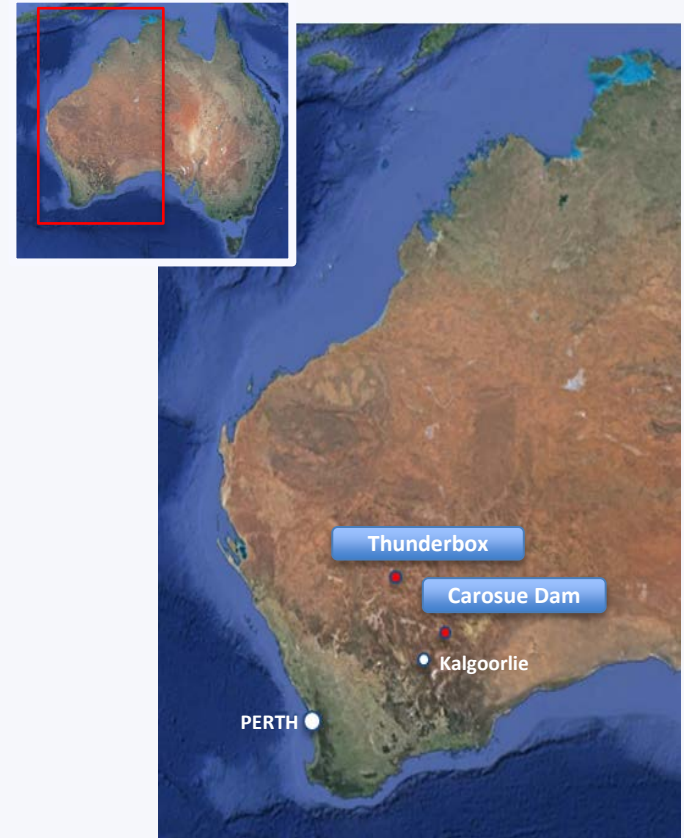


\* Australian dollars converted at an exchange rate of A\$0.75 per \$1US

# Australia's newest mid-tier gold miner



- Production to hit ~300kozpa by the June Q 2017, AISC declining to **A\$950/oz** in FY20, driving substantial increases in cash-flow
- Two operational centres in Western Australia:
  - *Carosue Dam (NE of Kalgoorlie) – Outstanding operational track record, multiple high-margin underground mines, ~160-170koz pa*
  - *Thunderbox (SE of Leinster) – Acquired from Norilsk, large-scale simple open pit, ~130-140koz pa, multiple growth opportunities including bulk underground mining potential and high grade “sweeteners”*
- Large endowment – **7.6Moz Resources, 1.5Moz Reserves**
- **A\$42m exploration budget:** Aimed at growing production and mine life, supported by outstanding new drill results

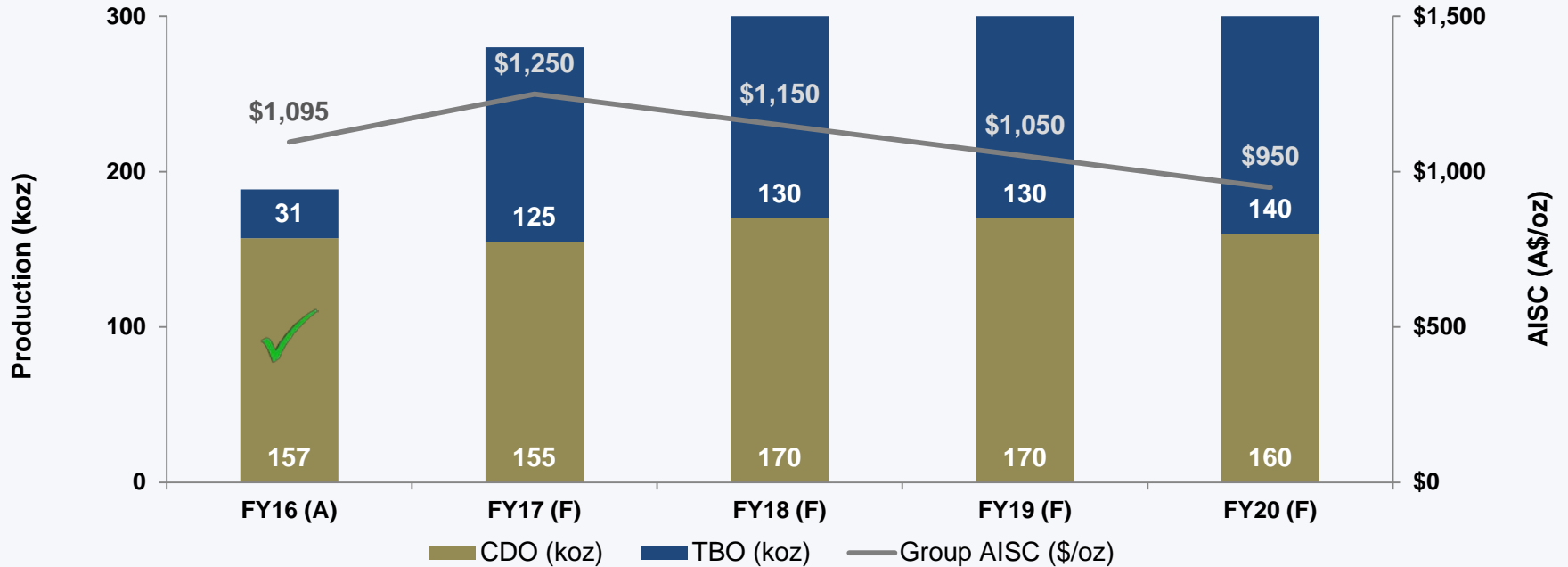


Growing volume, margin and endowment

# Plan the mine, mine the plan



## Five-year production outlook (83% classified as Reserves)



Note - Refer to the ASX announcement dated 27<sup>th</sup> July 2016 – “Tripling of exploration budget to grow production and life”

Met or exceeded guidance four years straight

# More than meets the eye...



- ▶ Deposits discovered within last 30 years (v ~100 years Goldfields)
- ▶ Average depth of SAR underground mines ~350m (v peers ~680m)
- ▶ FY17 exploration budget **A\$42m** (v A\$25m over the past 2 years)
- ▶ All deposits open at depth and along strike

Backed in by an **A\$42M** drilling investment in FY17

# Tripling of exploration budget



## Judicious allocation of capital

Project	Sep-16 Qtr	Dec-16 Qtr	Mar-17 Qtr	Jun-17 Qtr	TOTAL \$m
<b>Thunderbox</b>					
Thunderbox Zone A UG		9.3			\$9.3
King of the Hills		3.3			\$3.3
<b>Carosue Dam</b>					
Red October	2.5				\$2.5
Deep South		6.8			\$6.8
Karari			9.1		\$9.1
Whirling Dervish				8.2	\$8.2
<b>Greenfields</b>					
Regional			2.8		\$2.8
<b>TOTAL \$m</b>	<b>\$8.6</b>	<b>\$9.4</b>	<b>\$15.4</b>	<b>\$8.6</b>	<b>\$42.0</b>

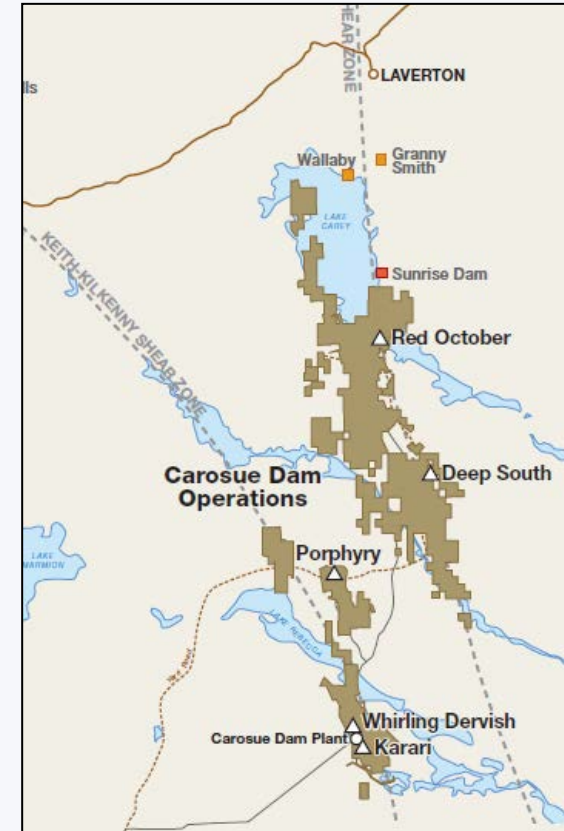
- Recent discovery costs have been sub-A\$10/oz e.g. Karari underground

The most aggressive drilling campaign in SAR's 10 year history

# Carosue Dam - Overview



- 2.4Mtpa CIL plant, operated since 2010
- FY17 outlook 155koz
- Ore sources include:
  - *Karari – Shallow, multiple lodes, growing discovery next to the plant, open in all directions*
  - *Deep South – Shallow, stoping underway, open in all directions*
  - *Red October – Small volume / high grade “sweetener”, reinvigorated exploration effort underway targeting extensions and repeats*
  - *Ore stockpile – ~32koz contained, mining cost sunk*
- Outstanding exploration upside – Extensive tenement holding in world-class ~23Moz Laverton District, 180km strike length of two key regional structures



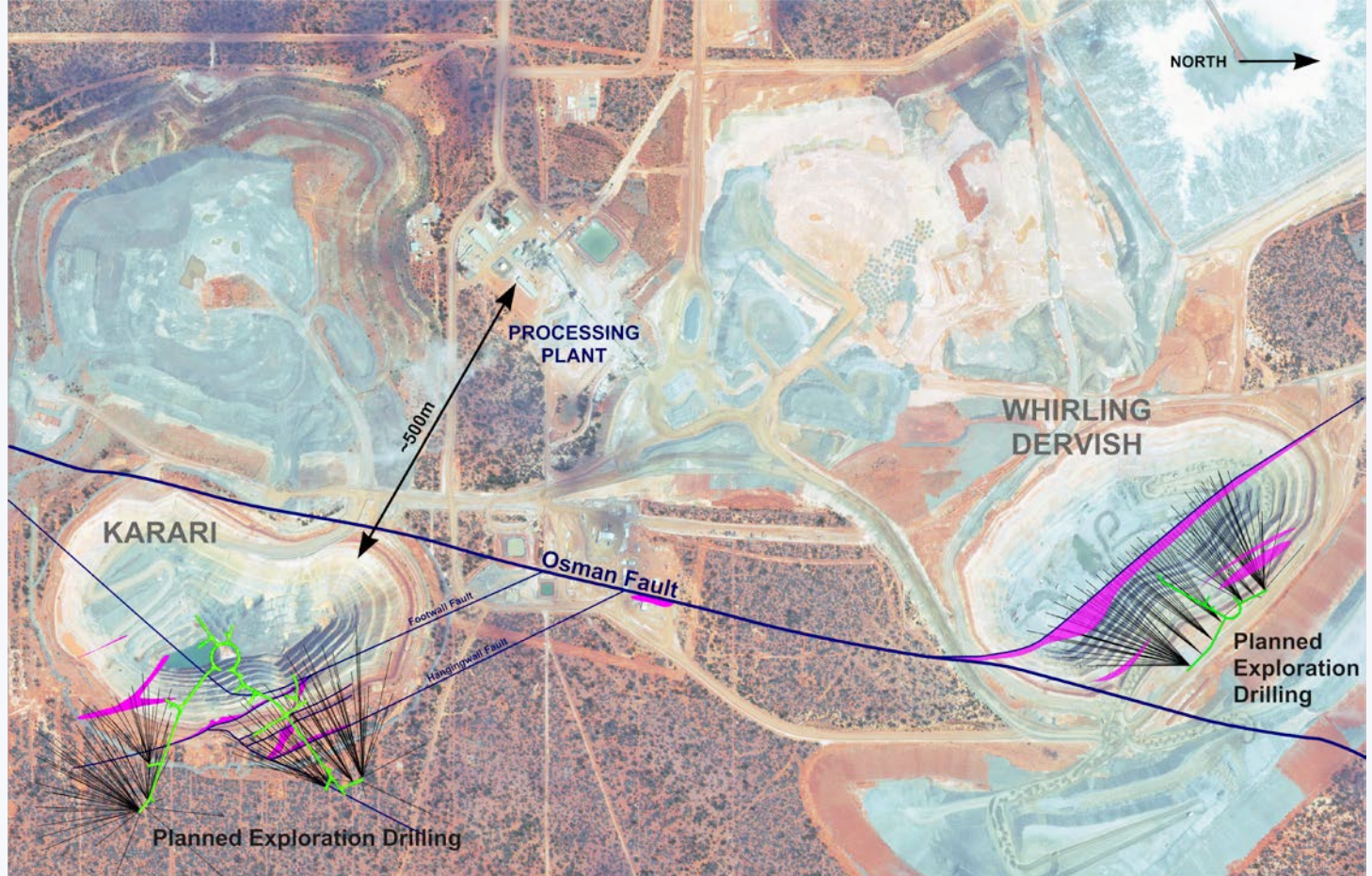
Consistent performer with growth opportunities straddling the mill



# Carosue Dam – We have baseload!

Underwritten by growth deposits:

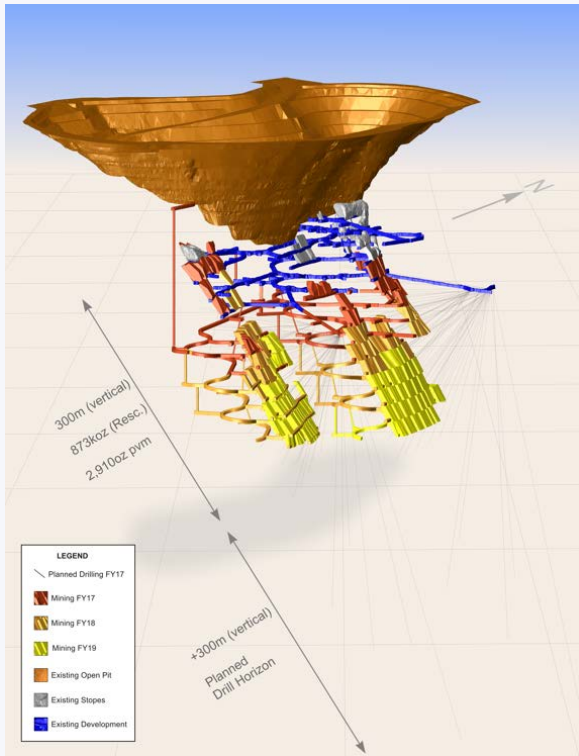
- Highly productive Karari UG mine  
*~500m from the mill*
- Whirling Dervish UG option (technically advanced, permitted)  
*<1km from the mill*
- Plus 32koz stockpile  
*At the mill*
- Augmented by higher grade Deep South  
*~80km from the mill*



# Carosue Dam – Drill momentum



## Karari



Aggressive drilling

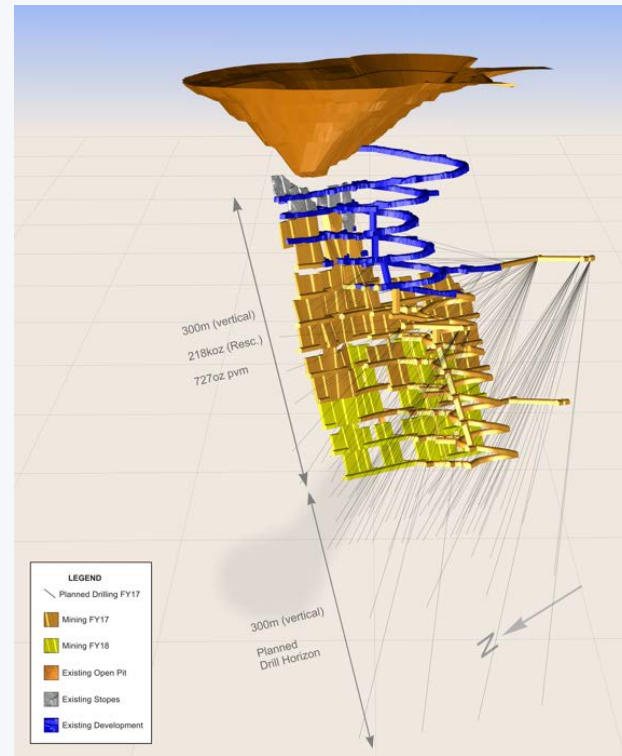
Dedicated drill platforms installed with “shelf life”

Recent drill results include:

16.6m @ 8.2g/t  
27.7m @ 6.1g/t  
19.0m @ 4.6g/t  
6.0m @ 11.2g/t  
16.0m @ 4.3g/t  
24.0m @ 3.9g/t  
27.6m @ 2.5g/t

Open at depth and along strike

## Deep South



Aggressive drilling

Dedicated drill platforms planned with “shelf life”

Deepest hole i.e. 18m @ 7.4g/t (outside the Reserve) commands follow-up

32,000m drilling planned for FY17

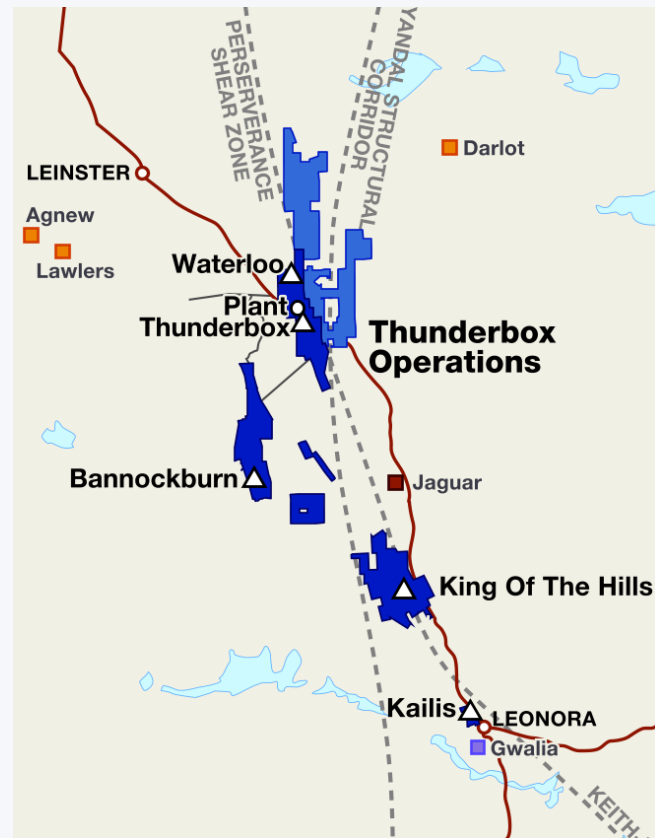
Open at depth and along strike

Think big... aiming to extend both by +300m

# Thunderbox – We've only just begun



- Developed ahead of schedule and under budget
- 2.5Mtpa CIL plant, A\$63m pre-production capex invested
- Stage 1 open pit – 596koz contained, ~A\$1000/oz AISC (US\$750/oz), 4-5 year mine life
- Fixed price contracts cover ~50% diesel usage over next two years (A\$0.62/litre v Feasibility Study A\$0.90)
- Multiple growth opportunities beyond the initial open pit:
  - *Bulk UG potential - Open down-plunge, deepest hole 55m @ 3.0g/t Au, Feasibility Study underway (AMC Consultants)*
  - *KOTH high grade - Drilling and mining commenced*
  - *Kailis high grade – 3.0g/t open pit, AISC A\$880/oz*
  - *Thunderbox D Zone – Near surface northern cut-back*



Robust, long-life open pit operation with outstanding underground potential

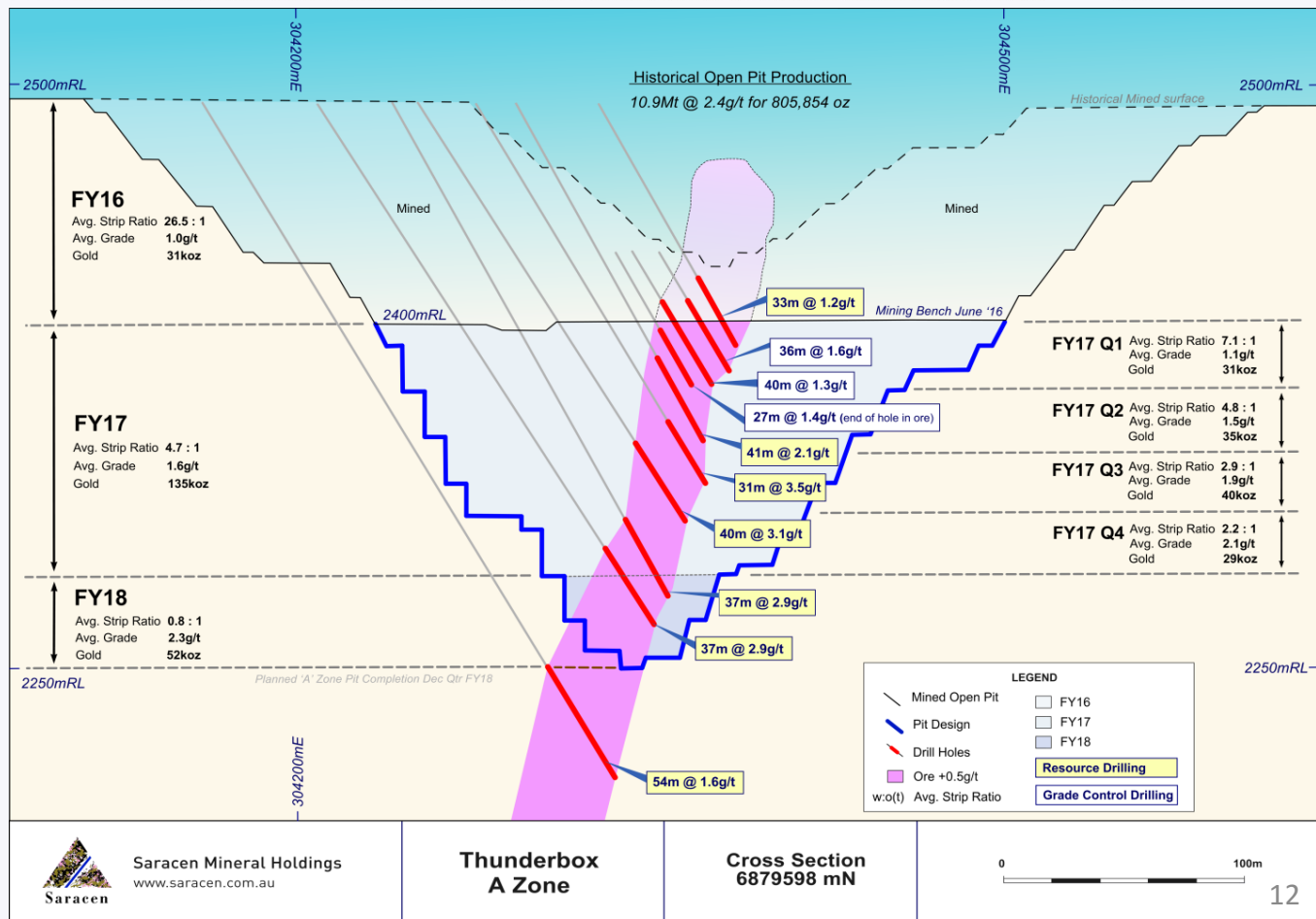
# Thunderbox – Gets better every day



Simple, robust open pit:

- A Zone
- High productivity, low cost
- Top down method (no pit staging)
- As the mine progresses:

*Strip ratio falls (waste:ore)*  
*Grade rises*  
*AISC falls*  
*Cash flow increases dramatically*



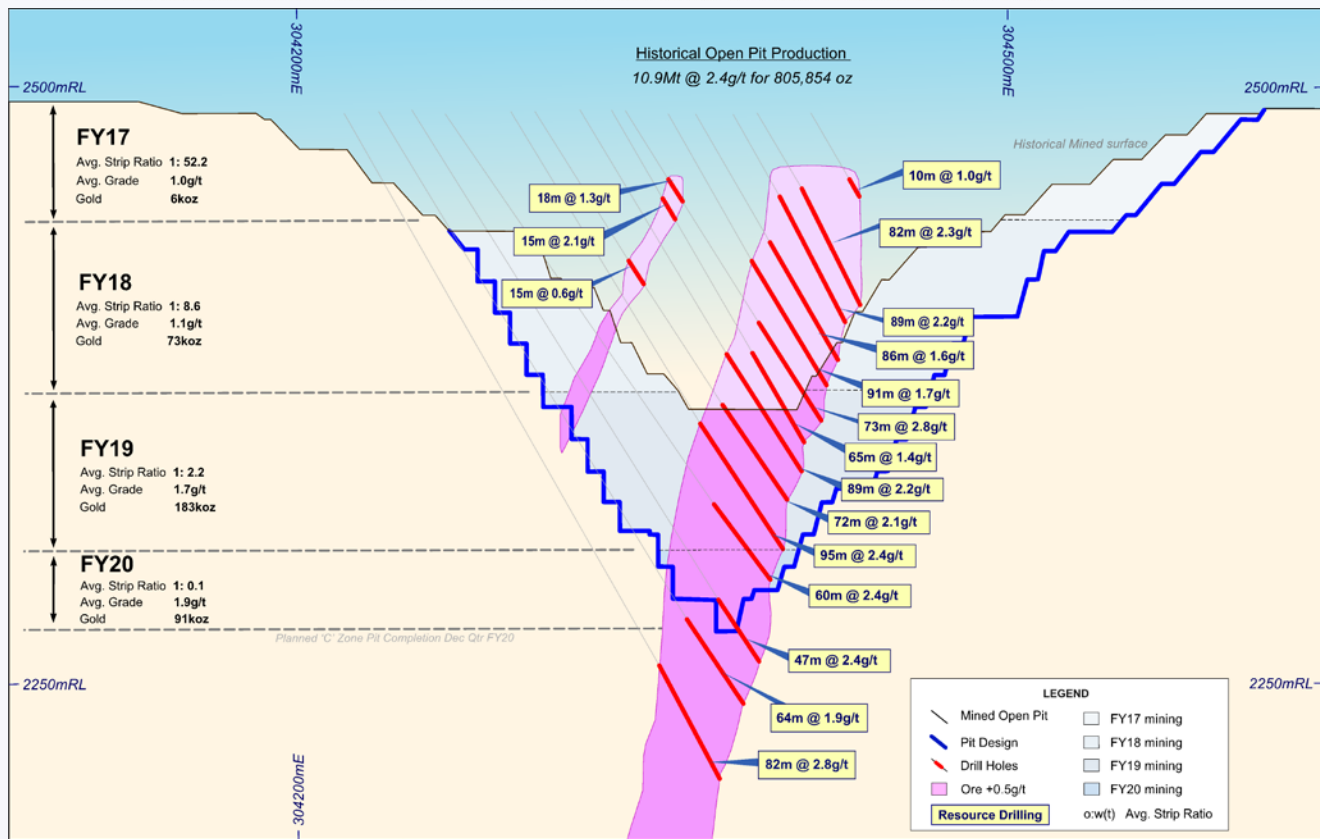
# Thunderbox – Gets better every day



Gets better with depth:

- Ditto C Zone

*i.e. AISC falls and cash flow increases dramatically as the mine progresses*



Saracen Mineral Holdings  
www.saracen.com.au

**Thunderbox  
C Zone**

**Cross Section  
6879920 mN**

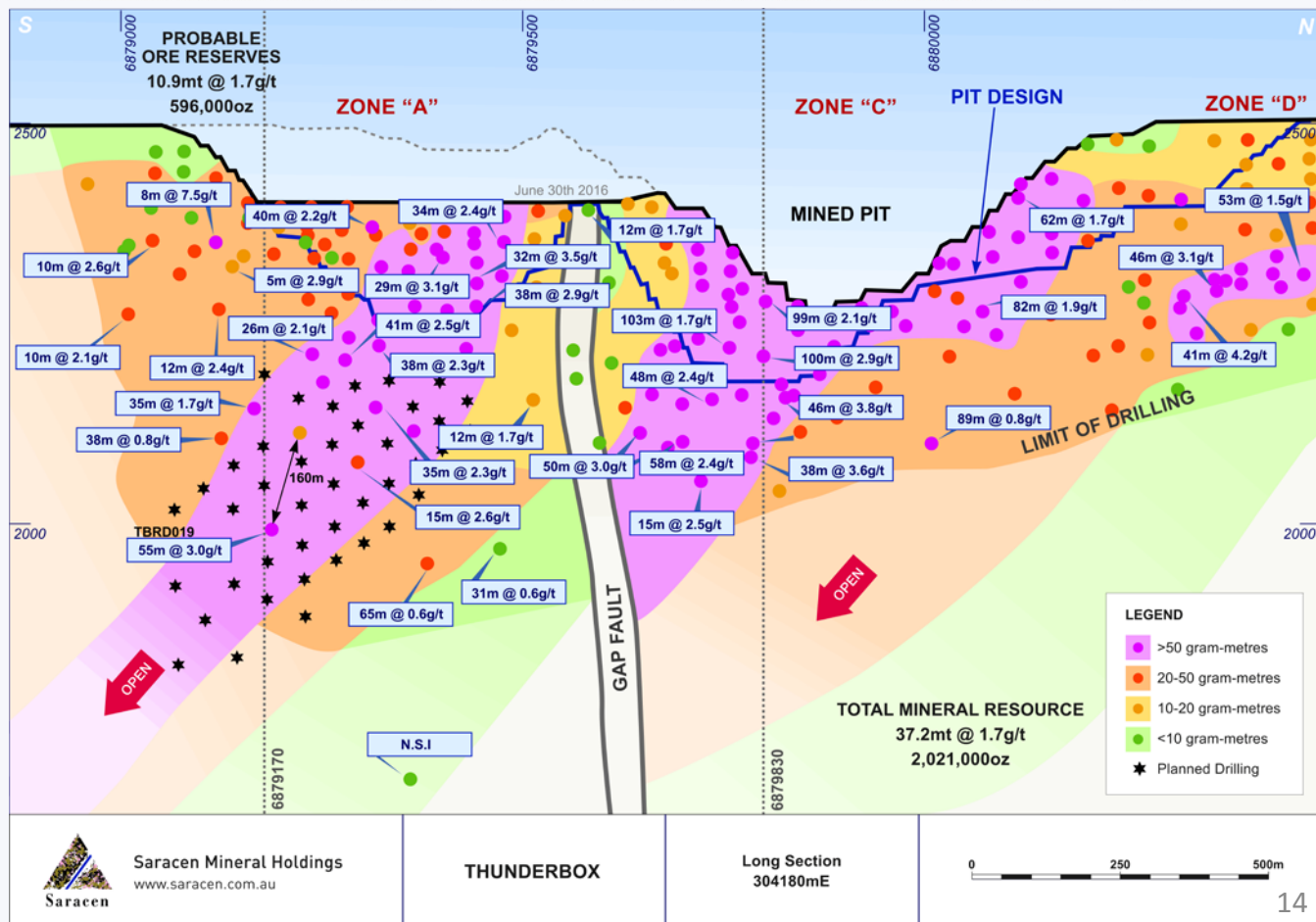


# Thunderbox – Drilling the next chapter



Potential >10 year mine life:

- +30,000m drilling to commence Sep Q 2016
- Targeting down-plunge A Zone
- Follow-up rich hole 55m @ 3.0g/t (TBRD019)
- Drilling will aim to define a multi-year bulk underground mine

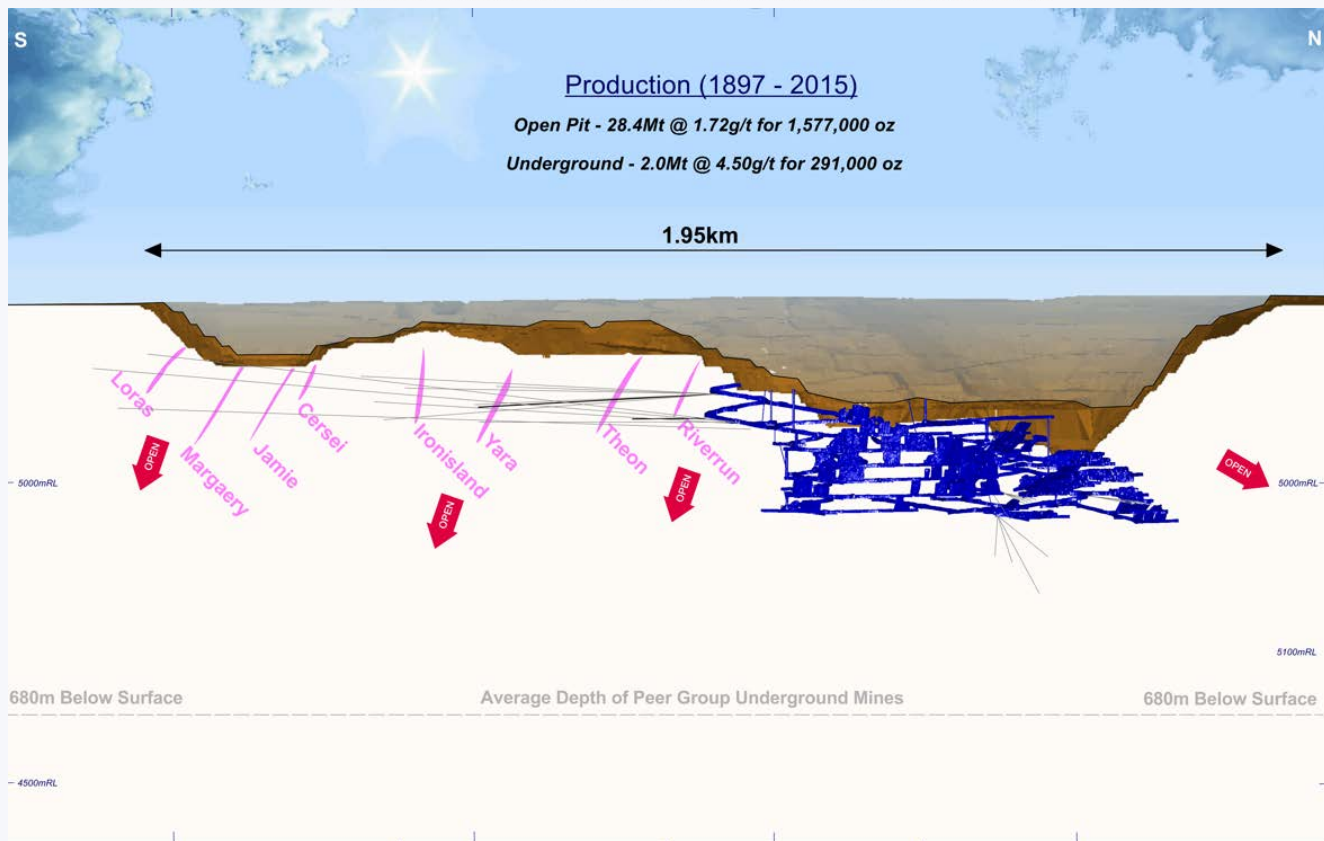


# Thunderbox growth – King of the Hills



Sleeping giant... awakens:

- Mining and drilling underway
- Very large mineralised system
- Plethora of early high grade drill results (estimated true width in brackets):
  - 14.8m @ 29.1g/t (10.2m)
  - 12.7m @ 11.6g/t (2.5m)
  - 6.4m @ 21.9g/t (1.5m)
  - 1.4m @ 30.1g/t (0.8m)
  - 4.4m @ 10.0g/t (2.5m)
  - 2.0m @ 44.1g/t (1.0m)
  - 4.0m @ 27.9g/t (2.0m)
  - 0.6m @ 41.2g/t (0.3m)
  - 0.6m @ 52.0g/t (0.5m)
  - 0.4m @ 43.0g/t (0.4m)
  - 1.4m @ 30.3g/t (1.4m)
  - 0.4m @ 71.3g/t (0.4m)



Saracen Mineral Holdings  
www.saracen.com.au

King of the Hills

Long Section  
Looking West

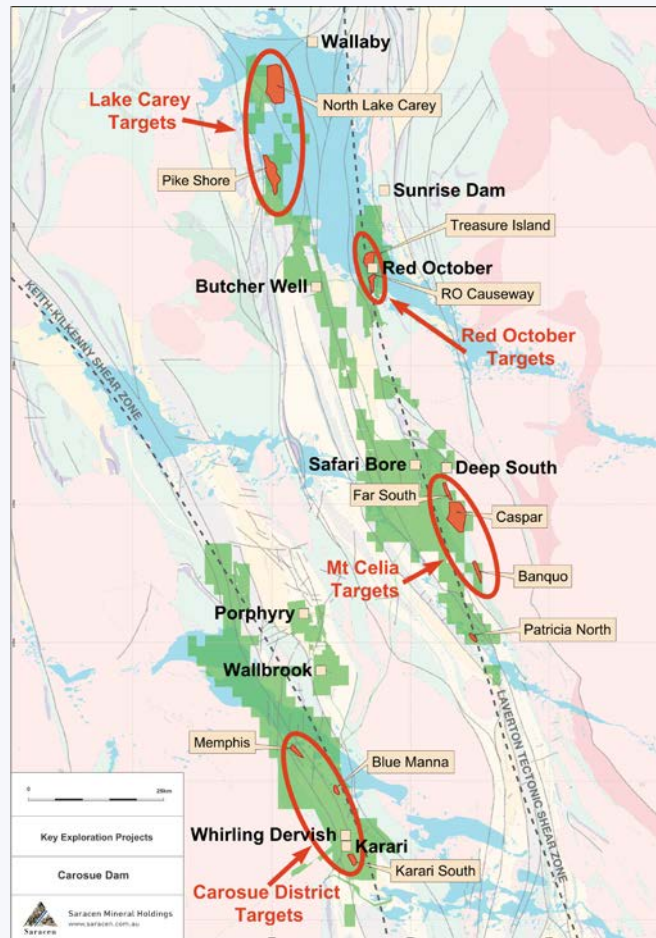


# Carosue Dam - Exploration upside



## Land of opportunity:

- Two high quality structural zones
- Limited exploration budget in recent years due to focus on Thunderbox development...
- ...enabled the technical knowledge to prepare and de-risk an aggressive campaign
- Multiple high quality targets systematically ranked
- Drilling already in full swing



Plethora of high quality targets



# Carosue Dam – Exploration upside



North Lake Carey... in the purple circle:

- Neighbours (AngloGold, Goldfields, Dacian) are extremely active
- With good reason!

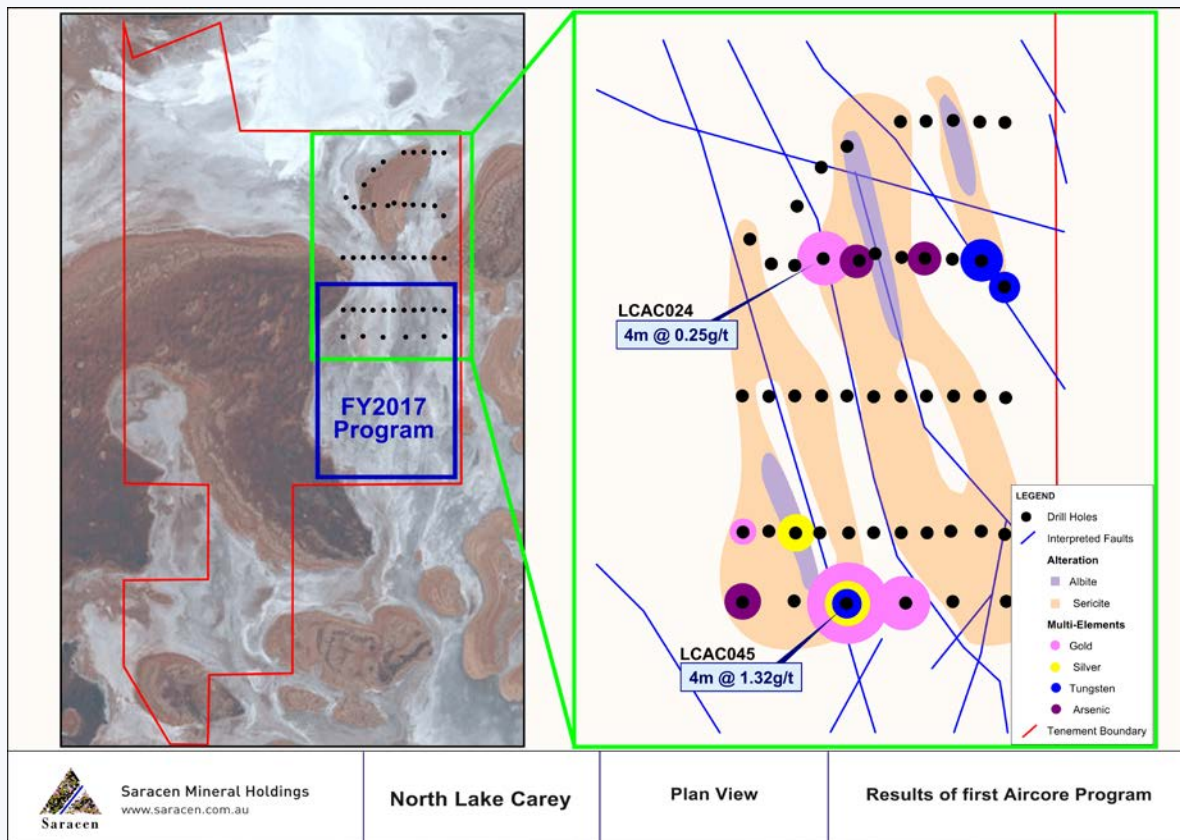
*Wallaby +8Moz*

*Sunrise Dam +10Moz*

*Granny Smith +2Moz*

*Mt Morgans +3Moz, growing*

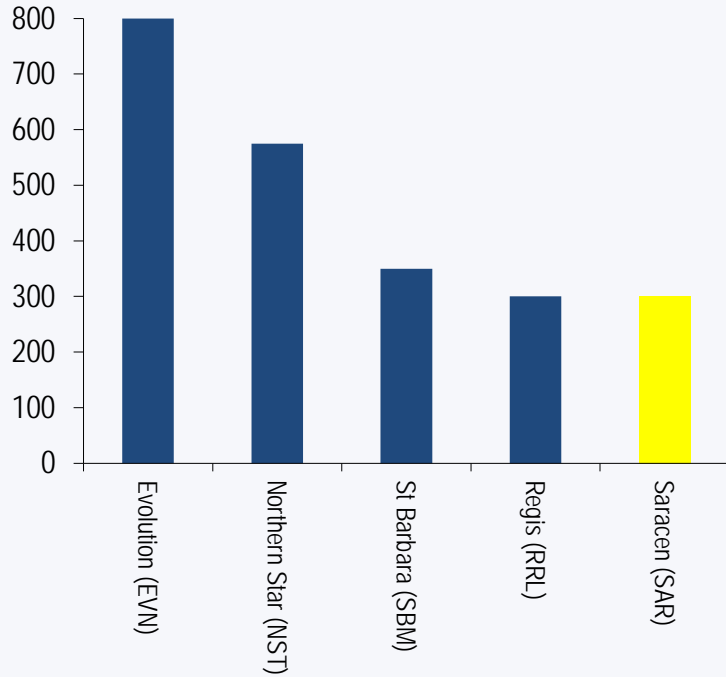
- Looking for the next big one
- SAR drilling in June half FY17



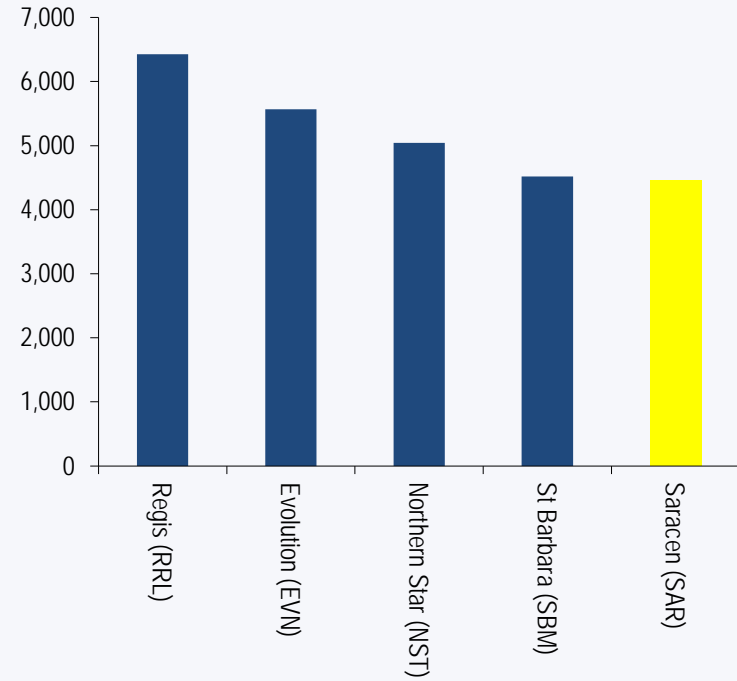
The hottest exploration destination in Australia

# Relative value

## Annual production (koz)



## EV / production (A\$/oz)



Australia's most under-valued mid-tier gold producer

# Saracen is a progressive business



	From...	...to...
Delivery	Met or exceeded guidance 4 years straight	Meeting or exceeding guidance
Operating cash flow	FY16A A\$110m (unaudited)	Consensus FY17F A\$180m*
Production	~150koz pa from 1 operation	>300koz pa from 2 operations
Balance sheet	Retired debt, internally funded Thunderbox	Putting cash on balance sheet
Growth	Thunderbox OP, two new UG mines	Thunderbox UG, KOTH etc
Returns	Much improved	Consistent TSR outperformance
Share register	Australian-centric	Global
Exploration	Minimal	Trebled!

\* Based on 7 brokers with FY17 consensus production of 297koz and gold price of A\$1834/oz

Aiming for gold sector leadership

# APPENDIX A – Ore Reserves – June 2015



Location	District	Deposit	Mine Type	Proved Reserves			Probable Reserves			Total Ore Reserves		
				tonnes	g/t	oz	tonnes	g/t	oz	tonnes	g/t	oz
Carosue Dam	Carosue Dam	Karari <sup>1</sup>	UG				2,213,000	3.0	212,000	2,213,000	3.0	212,000
		Whirling Dervish	UG				950,000	3.0	90,000	950,000	3.0	90,000
		<b>Carosue Dam Sub-Total</b>			<b>0</b>	<b>0.0</b>	<b>0</b>	<b>3,163,000</b>	<b>3.0</b>	<b>302,000</b>	<b>3,163,000</b>	<b>3.0</b>
	Porphyry	Million Dollar	OP				1,390,000	1.2	53,000	1,390,000	1.2	53,000
		Wallbrook	OP				1,765,000	1.3	71,000	1,765,000	1.3	71,000
		Enterprise	OP				357,000	2.2	26,000	357,000	2.3	26,000
		<b>Porphyry Sub-Total</b>			<b>0</b>	<b>0.0</b>	<b>0</b>	<b>3,512,000</b>	<b>1.3</b>	<b>150,000</b>	<b>3,512,000</b>	<b>1.3</b>
	Safari Bore	Deep South	UG				979,000	4.0	125,000	979,000	4.0	125,000
		<b>Safari Bore Sub-Total</b>			<b>0</b>	<b>0.0</b>	<b>0</b>	<b>979,000</b>	<b>4.0</b>	<b>125,000</b>	<b>979,000</b>	<b>4.0</b>
	Red October	Red October	UG				225,000	6.0	43,000	225,000	6.0	43,000
		<b>Red October Sub-Total</b>			<b>0</b>	<b>0.0</b>	<b>0</b>	<b>225,000</b>	<b>6.0</b>	<b>43,000</b>	<b>225,000</b>	<b>6.0</b>
	All	Stockpiles	S	2,296,000	1.1	81,000				2,296,000	1.1	81,000
		<b>Carosue Dam Ore Reserves</b>		<b>2,296,000</b>	<b>1.1</b>	<b>81,000</b>	<b>7,879,000</b>	<b>2.4</b>	<b>620,000</b>	<b>10,175,000</b>	<b>2.1</b>	<b>701,000</b>
Thunderbox	Thunderbox	Thunderbox	OP				10,908,000	1.7	596,000	10,908,000	1.7	596,000
		<b>Thunderbox Sub-Total</b>			<b>0</b>	<b>0.0</b>	<b>0</b>	<b>10,908,000</b>	<b>1.7</b>	<b>596,000</b>	<b>10,908,000</b>	<b>1.7</b>
	Bannockburn	Bannockburn	OP				4,352,000	1.5	206,000	4,352,000	1.5	206,000
		<b>Bannockburn Sub-Total</b>			<b>0</b>	<b>0.0</b>	<b>0</b>	<b>4,352,000</b>	<b>1.5</b>	<b>206,000</b>	<b>4,352,000</b>	<b>1.5</b>
	King of the Hills	Kailis *	OP				998,000	3.0	95,000	998,000	3.0	95,000
		<b>King of the Hills Sub-Total</b>			<b>0</b>	<b>0.0</b>	<b>0</b>	<b>998,000</b>	<b>3.0</b>	<b>95,000</b>	<b>998,000</b>	<b>3.0</b>
	All	<b>Thunderbox Ore Reserves</b>			<b>0</b>	<b>0.0</b>	<b>0</b>	<b>16,258,000</b>	<b>1.7</b>	<b>897,000</b>	<b>16,258,000</b>	<b>1.7</b>
Total	<b>Total Ore Reserves</b>			<b>2,296,000</b>	<b>1.1</b>	<b>81,000</b>	<b>24,137,000</b>	<b>2.0</b>	<b>1,517,000</b>	<b>26,433,000</b>	<b>1.9</b>	<b>1,598,000</b>

<sup>1</sup> Karari UG Ore Reserves reflect the update from April 2016 – For more information refer to ASX announcement made on 13 April 2016 titled, “Resource and Reserve upgrade, Carosue Dam set for long life”. The report is available to view on the ASX Website at [www.asx.com.au](http://www.asx.com.au) and on the Company’s website at [www.saracen.com.au](http://www.saracen.com.au).

# APPENDIX A – Mineral Resources – June 2015



Location	District	Deposit	Measured			Indicated			Inferred			Total			
			tonnes	g/t	oz	tonnes	g/t	oz	tonnes	g/t	oz	tonnes	g/t	oz	
Carosue Dam	Carosue Dam	Whirling Dervish O/P				5,619,000	1.5	277,000	305,000	1.1	11,000	5,924,000	1.5	288,000	
		Whirling Dervish U/G				4,400,000	2.4	355,000	1,624,000	2.7	147,000	6,024,000	2.6	502,000	
		Karari O/P				136,000	1.2	5,000	191,000	1.5	9,000	327,000	1.3	14,000	
		Karari U/G <sup>1</sup>				7,404,000	2.6	625,000	2,105,000	3.5	234,000	9,509,000	2.8	859,000	
		Monty's/Elliots	123,000	2.2	9,000	1,422,000	1.8	83,000	374,000	1.6	19,000	1,919,000	1.8	111,000	
		Twin Peaks	40,000	2.3	3,000	564,000	3.4	61,000	80,000	2.8	7,000	684,000	3.2	71,000	
		North West				332,000	0.8	9,000	691,000	0.8	18,000	1,023,000	0.8	27,000	
		Pinnacles				387,000	2.1	27,000	26,000	1.4	1,000	413,000	2.1	28,000	
		Blue Manna							1,074,000	1.5	51,000	1,074,000	1.5	51,000	
	<b>Carosue Dam Sub-Total</b>	<b>163,000</b>	<b>2.3</b>	<b>12,000</b>	<b>20,264,000</b>	<b>2.2</b>	<b>1,442,000</b>	<b>6,470,000</b>	<b>2.4</b>	<b>497,000</b>	<b>26,897,000</b>	<b>2.3</b>	<b>1,951,000</b>		
	Porphyry	Porphyry O/P	702,000	1.1	25,000	7,262,000	1.0	239,000	1,551,000	1.0	48,000	9,515,000	1.0	312,000	
		Porphyry U/G				488,000	5.0	78,000	243,000	2.9	23,000	731,000	4.3	101,000	
		Million Dollar				9,270,000	1.0	298,000	1,639,000	0.9	47,000	10,909,000	1.0	345,000	
		Wallbrook	1,286,000	1.1	44,000	6,775,000	1.0	216,000	4,037,000	1.1	141,000	12,098,000	1.0	401,000	
		Margarets				48,000	1.4	2,000	634,000	1.1	22,000	682,000	1.1	24,000	
		Enterprise	218,000	2.1	15,000	310,000	2.2	22,000	142,000	2.2	10,000	670,000	2.2	47,000	
		<b>Porphyry Sub-Total</b>	<b>2,206,000</b>	<b>1.2</b>	<b>84,000</b>	<b>24,153,000</b>	<b>1.1</b>	<b>855,000</b>	<b>8,246,000</b>	<b>1.1</b>	<b>291,000</b>	<b>34,605,000</b>	<b>1.1</b>	<b>1,230,000</b>	
	Safari Bore	Safari Bore	780,000	2.0	50,000	1,358,000	2.3	100,000	672,000	2.3	50,000	2,810,000	2.2	200,000	
		Deep South O/P				355,000	2.5	29,000			0	355,000	2.5	29,000	
		Deep South U/G				1,256,000	4.0	163,000	430,000	4.0	55,000	1,686,000	4.0	218,000	
		Deep Well				68,000	2.2	5,000	15,000	2.0	1,000	83,000	2.2	6,000	
		<b>Safari Bore Sub-Total</b>	<b>780,000</b>	<b>2.0</b>	<b>50,000</b>	<b>3,037,000</b>	<b>3.0</b>	<b>297,000</b>	<b>1,117,000</b>	<b>3.0</b>	<b>106,000</b>	<b>4,934,000</b>	<b>2.9</b>	<b>453,000</b>	
	Red October	Red October O/P				251,000	1.7	14,000				251,000	1.7	14,000	
		Red October U/G	9,000	8.6	2,000	152,000	16.8	82,000	33,000	13.9	15,000	194,000	15.9	99,000	
		Thin Lizzie							325,000	1.3	14,000	325,000	1.3	14,000	
		Tin Dog							1,284,000	1.3	54,000	1,284,000	1.3	54,000	
		Bulldog							1,529,000	0.9	44,000	1,529,000	0.9	44,000	
		Crimson Belle				916,000	1.4	41,000	577,000	1.3	24,000	1,493,000	1.4	65,000	
		Butcher Well				2,692,000	1.7	144,000	2,280,000	1.7	126,000	4,972,000	1.7	270,000	
		<b>Red October Sub-Total</b>	<b>9,000</b>	<b>6.9</b>	<b>2,000</b>	<b>4,011,000</b>	<b>2.2</b>	<b>281,000</b>	<b>6,028,000</b>	<b>1.4</b>	<b>277,000</b>	<b>10,048,000</b>	<b>1.7</b>	<b>560,000</b>	
	All	Ore Stockpiles	2,296,000	1.1	81,000							2,296,000	1.1	81,000	
		Sub-grade stockpiles	3,460,000	0.6	69,000							3,460,000	0.6	69,000	
	<b>Carosue Dam Mineral Resources</b>			<b>8,914,000</b>	<b>1.0</b>	<b>298,000</b>	<b>51,465,000</b>	<b>1.7</b>	<b>2,875,000</b>	<b>21,861,000</b>	<b>1.7</b>	<b>1,171,000</b>	<b>82,240,000</b>	<b>1.6</b>	<b>4,344,000</b>

<sup>1</sup> Karari UG Mineral Resources reflect the update from April 2016 – For more information refer to ASX announcement made on 13 April 2016 titled, "Resource and Reserve upgrade, Carosue Dam set for long life". The report is available to view on the ASX Website at [www.asx.com.au](http://www.asx.com.au) and on the Company's website at [www.saracen.com.au](http://www.saracen.com.au).

# APPENDIX A – Mineral Resources – June 2015



Thunderbox	Thunderbox	Thunderbox				27,278,000	1.7	1,516,000	9,940,000	1.6	505,000	37,218,000	1.7	2,021,000
		Mangilla				726,000	2.1	48,000	278,000	2.1	19,000	1,004,000	2.1	67,000
		Rainbow	226,000	1.5	11,000	588,000	1.2	23,000	909,000	1.0	30,000	1,723,000	1.2	64,000
		King of the Hills *				799,000	5.5	142,000	71,000	12.3	28,000	870,000	6.1	170,000
		Kailis *				1,287,000	3.3	135,000	76,000	2.7	7,000	1,363,000	3.2	142,000
	<b>Thunderbox Sub-Total</b>		<b>226,000</b>	<b>1.5</b>	<b>11,000</b>	<b>30,678,000</b>	<b>1.9</b>	<b>1,864,000</b>	<b>11,274,000</b>	<b>1.6</b>	<b>589,000</b>	<b>42,178,000</b>	<b>1.8</b>	<b>2,464,000</b>
	Bannockburn	Bannockburn				8,979,000	2.0	564,000	3,152,000	1.6	161,000	12,131,000	1.9	725,000
		North Well				4,321,000	1.5	209,000	2,460,000	1.6	124,000	6,781,000	1.5	333,000
	<b>Bannockburn Sub-Total</b>		<b>0</b>	<b>0.0</b>	<b>0</b>	<b>13,300,000</b>	<b>1.8</b>	<b>773,000</b>	<b>5,612,000</b>	<b>1.6</b>	<b>285,000</b>	<b>18,912,000</b>	<b>1.7</b>	<b>1,058,000</b>
	All	<b>Thunderbox Mineral Resources</b>	<b>226,000</b>	<b>1.5</b>	<b>11,000</b>	<b>43,978,000</b>	<b>1.9</b>	<b>2,637,000</b>	<b>16,886,000</b>	<b>1.6</b>	<b>874,000</b>	<b>61,090,000</b>	<b>1.8</b>	<b>3,522,000</b>
Total	<b>Total Mineral Resources</b>	<b>9,140,000</b>	<b>1.1</b>	<b>309,000</b>	<b>95,443,000</b>	<b>1.8</b>	<b>5,512,000</b>	<b>38,747,000</b>	<b>1.6</b>	<b>2,045,000</b>	<b>143,330,000</b>	<b>1.7</b>	<b>7,866,000</b>	

Location	District	Deposit	Measured			Indicated			Inferred			Total		
			tonnes	Ni %	Ni tonnes	tonnes	Ni %	Ni tonnes	tonnes	Ni %	Ni tonnes	tonnes	Ni %	Ni tonnes
Thunderbox	Waterloo	Massive							20,334	7.6	1,545	20,334	7.6	1,545
		Matrix							52,027	4.1	2,133	52,027	4.1	2,133
		Disseminated							304,296	1.6	4,717	304,296	1.6	4,717
		Weak Disseminated							48,380	1.8	847	48,380	1.8	847
	<b>Waterloo Sub-Total</b>		<b>0</b>	<b>0.0</b>	<b>0</b>	<b>0</b>	<b>0.0</b>	<b>0</b>	<b>425,037</b>	<b>2.2</b>	<b>9,200</b>	<b>425,037</b>	<b>2.2</b>	<b>9,200</b>
	Amorac	All Amorac							264,277	2.0	5,233	264,277	2.0	5,233
<b>Amorac Sub-Total</b>		<b>0</b>	<b>0.0</b>	<b>0</b>	<b>0</b>	<b>0.0</b>	<b>0</b>	<b>264,277</b>	<b>2.0</b>	<b>5,200</b>	<b>264,277</b>	<b>2.0</b>	<b>5,200</b>	
Total	<b>Total Mineral Resources</b>	<b>0</b>	<b>0.0</b>	<b>0</b>	<b>0</b>	<b>0.0</b>	<b>0</b>	<b>689,314</b>	<b>2.1</b>	<b>14,400</b>	<b>689,314</b>	<b>2.1</b>	<b>14,400</b>	

# APPENDIX A – Competent persons



## Competent Persons Statements

The information on Mineral Resources and Ore Reserves has been extracted from the ASX announcements titled “2015 Mineral Resources and Ore Reserves” dated 15 October 2015, and “Resource and Reserve upgrade, Carosue Dam set for long life” dated 13 April 2016. These reports are available to view on the ASX Website at [www.asx.com.au](http://www.asx.com.au) and on the Company’s website at [www.saracen.com.au](http://www.saracen.com.au). The Company confirms that it is not aware of any new information or data that materially affects the information included in the original market announcements and, in the case of estimates of Mineral Resources and Ore Reserves, that all market assumptions and technical assumptions underpinning the estimates in the relevant market announcements continue to apply and have not materially changed. The Company confirms that the form and context in which the Competent Person’s findings are presented have not been materially modified from the original market announcements.

The information in the report to which this statement is attached that relates to Exploration Results and Mineral Resources related to Gold is based upon information compiled by Mr Daniel Howe, a Competent Person who is a member of The Australasian Institute of Mining and Metallurgy and the Australian Institute of Geoscientists. Daniel Howe is a full-time employee of the company. Daniel Howe has sufficient experience that is relevant to the style of mineralisation and type of deposit under consideration and to the activity being undertaken to qualify as a Competent Person as defined in the 2012 Edition of the ‘Australasian Code for Reporting of Exploration Results, Mineral Resources and Ore Reserves’. Daniel Howe consents to the inclusion in the report of matters based on his information in the form and context in which it appears.

The information in the report to which this statement is attached that relates to Exploration Results and Mineral Resources related to Nickel is based upon information compiled by Mr Lynn Widenbar, a Competent Person who is a member of The Australasian Institute of Mining and Metallurgy. Lynn Widenbar is a consultant to Saracen Mineral Holdings. Lynn Widenbar has sufficient experience that is relevant to the style of mineralisation and type of deposit under consideration and to the activity being undertaken to qualify as a Competent Person as defined in the 2012 Edition of the ‘Australasian Code for Reporting of Exploration Results, Mineral Resources and Ore Reserves’. Lynn Widenbar consents to the inclusion in the report of matters based on his information in the form and context in which it appears.

The information in the report to which this statement is attached that relates to underground Ore Reserves at Red October, Deep South, Karari and Whirling Dervish is based upon information compiled by Stephen King, a Competent Person who is a member of The Australasian Institute of Mining and Metallurgy. Stephen King is a full-time employee of the company. Stephen King has sufficient experience that is relevant to the style of mineralisation and type of deposit under consideration and to the activity being undertaken to qualify as a Competent Person as defined in the 2012 Edition of the ‘Australasian Code for Reporting of Exploration Results, Mineral Resources and Ore Reserves’. Stephen King consents to the inclusion in the report of matters based on his information in the form and context in which it appears.

The information in the report to which this statement is attached that relates to all open pit Ore Reserves relating to Gold based upon information compiled by Christopher Burton, a Competent Person who is a member of The Australasian Institute of Mining and Metallurgy. Christopher Burton is a full-time employee of the company. Christopher Burton has sufficient experience that is relevant to the style of mineralisation and type of deposit under consideration and to the activity being undertaken to qualify as a Competent Person as defined in the 2012 Edition of the ‘Australasian Code for Reporting of Exploration Results, Mineral Resources and Ore Reserves’. Christopher Burton consents to the inclusion in the report of matters based on his information in the form and context in which it appears.



Saracen



Contact Details

Troy Irvin

Corporate Development Officer

Phone: +61 8 6229 9100

Email: [info@saracen.com.au](mailto:info@saracen.com.au)

Website: [www.saracen.com.au](http://www.saracen.com.au)

