



**COPPER**

**GOLD**

**PUITE (PERU)** – Potential Porphyry Cu nearby  
**CHOLOLO (PERU)** – Preserved Porphyry Cu Target  
**CERRO DE FIERRO (PERU)** – Large IOCG Target  
**SOUTHERN PERU** – Pipeline of Cu-Au Projects

**NICKEL**

**ZINC**

**JIMBERLANA (WA)** – New Concept – Large Ni Target  
**FRASER RANGE (WA)** – Prospective – Multiple Targets  
**BLUE BILLY (WA)** – New Opportunity – Large-scale Zinc

**GOLD**

**BANFORA (BURKINA FASO)** – JV Funded Exploration



## **Forward-Looking Statements**

This presentation contains forward looking statements concerning the projects owned by AusQuest Limited. Statements concerning mining reserves and resources may also be deemed to be forward looking statements in that they involve estimates based on specific assumptions. Forward-looking statements are not statements of historical fact and actual events and results may differ materially from those described in the forward looking statements as a result of a variety of risks, uncertainties and other factors. Forward looking statements are based on management's beliefs, opinions and estimates as of the dates the forward looking statements are made and no obligation is assumed to update forward looking statements if these beliefs, opinions and estimates should change or to reflect other future developments. Data and amounts shown in this presentation relating to capital costs, operating costs and project timelines are internally generated best estimates only. All such information and data is currently under review as part of AusQuest Limited's ongoing development and feasibility studies. Accordingly, AusQuest Limited cannot guarantee the accuracy and/or completeness of the figures or data included in the presentation until the feasibility studies are completed.

## **Competent Person's Statement**

The details contained in this report that pertain to exploration results are based upon information compiled by Mr Graeme Drew, a full-time employee of AusQuest Limited. Mr Drew is a Fellow of the Australasian Institute of Mining and Metallurgy (AUSIMM) and has sufficient experience in the activity which he is undertaking to qualify as a Competent Person as defined in the December 2012 edition of the "Australasian Code for Reporting of Exploration Results, Mineral Resources and Ore Reserves" (JORC Code). Mr Drew consents to the inclusion in the report of the matters based upon his information in the form and context in which it appears.

## **JORC – Exploration Targets**

It is common practice for a company to comment on and discuss its exploration in terms of target size and type. The information in this presentation relating to exploration targets should not be misunderstood or misconstrued as an estimate of Mineral Resources or Ore Reserves. Hence the terms Resource(s) or Reserve(s) have not been used in this context. The potential quantity and grade is conceptual in nature, since there has been insufficient work completed to define them beyond exploration targets and that it is uncertain if further exploration will result in the determination of a Mineral Resource.

## **Currency**

All dollar amounts shown in this presentation are in Australian dollars unless otherwise stated.

# POTENTIAL PRICE CATALYSTS - 2017



## PERU

*Puite: Locate & Drill Porphyry Cu centre*

*Chololo: Drill Porphyry Cu target*

*Cerro de Fierro: Drill IOCG target*

*Attract New Joint Venture partner(s)*

## W. AUST

*Jimberlana: Define & drill NiS target(s)*

*Fraser Range: Define & drill NiS target(s)*

*Blue Billy: Define & drill SEDEX Zn target*

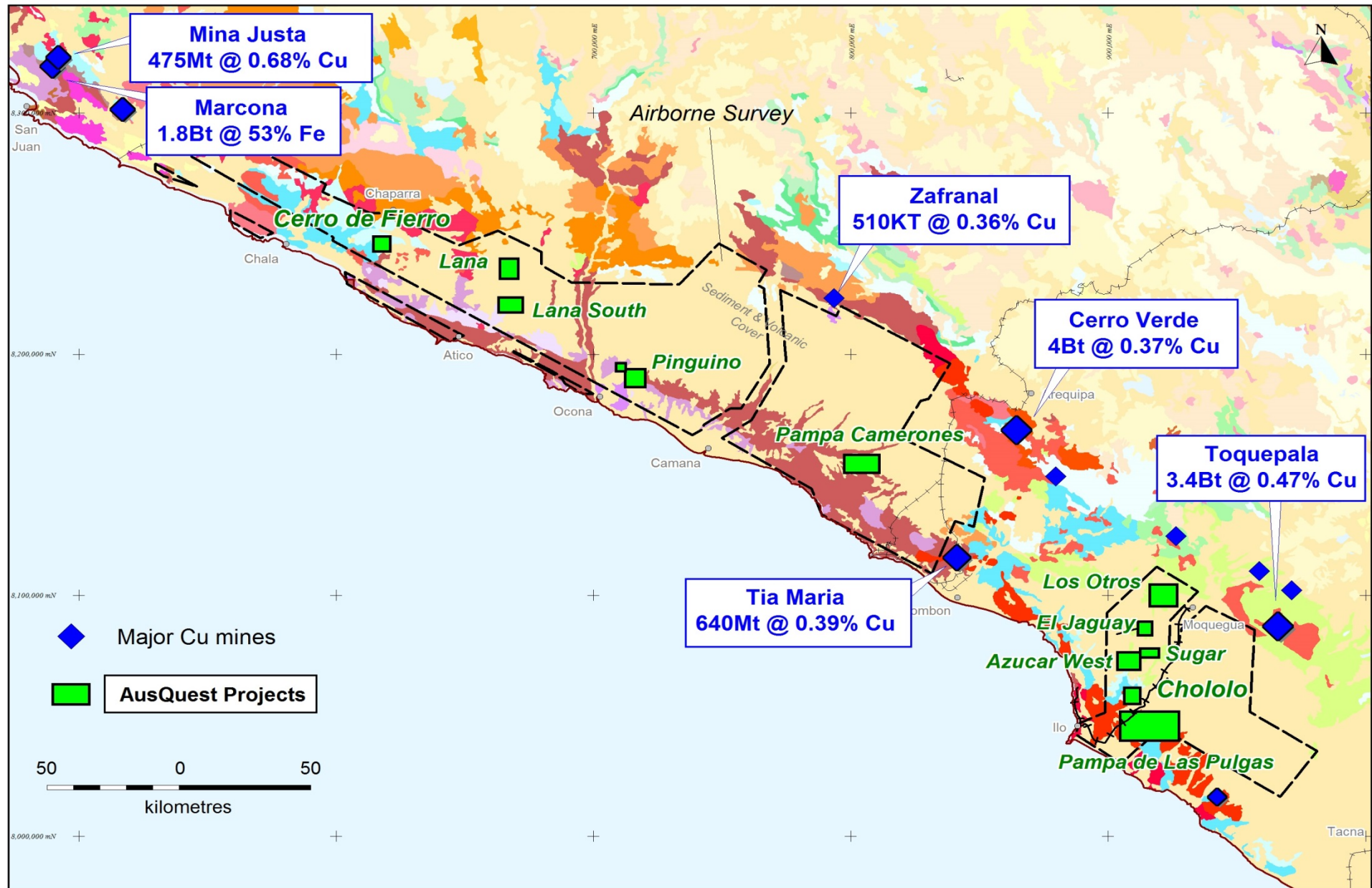
*Attract Joint venture partner(s) for drilling?*

## W. AFRICA

*Banfora Gold: JV funded target drilling*

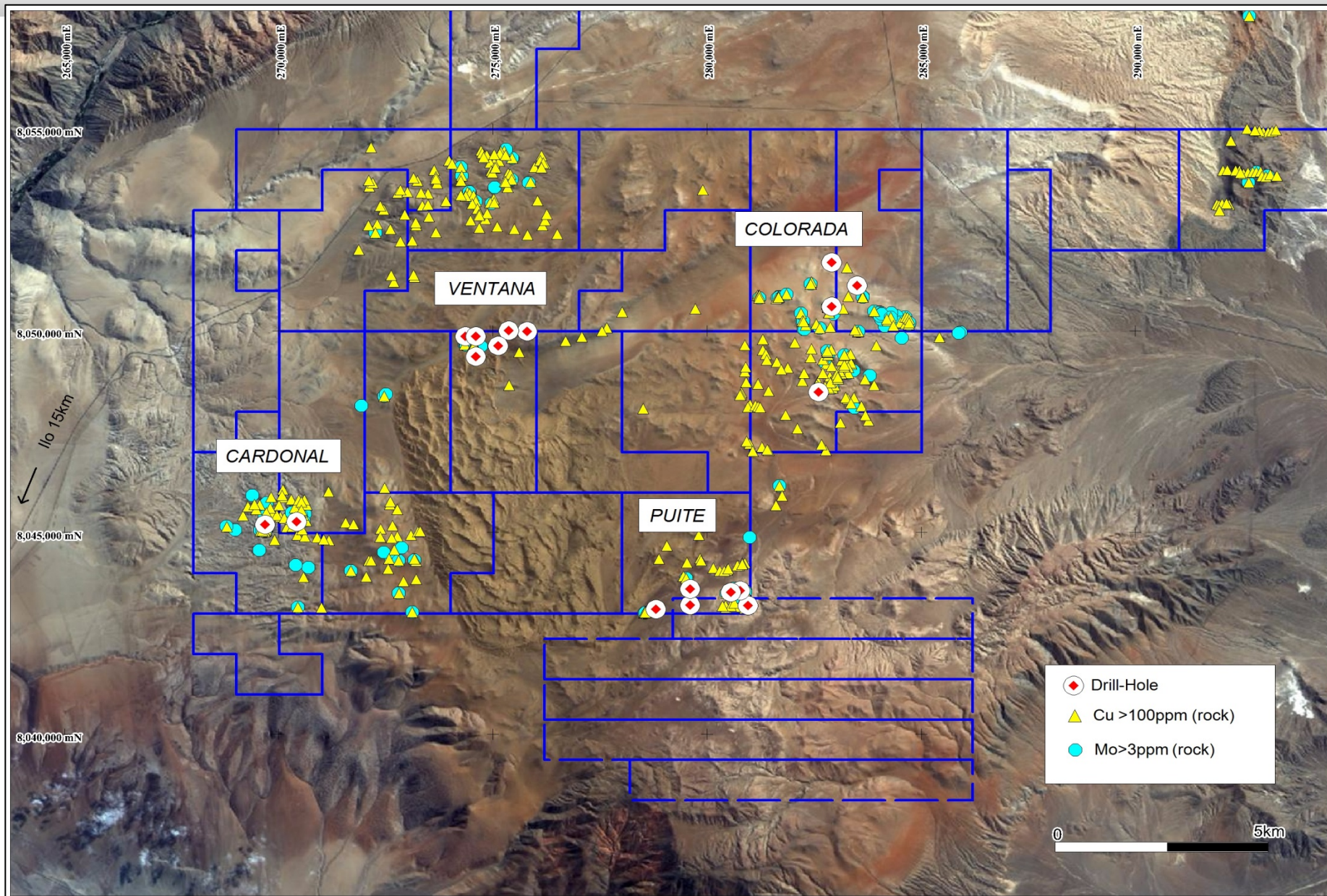


# PERU - CURRENT PROJECTS





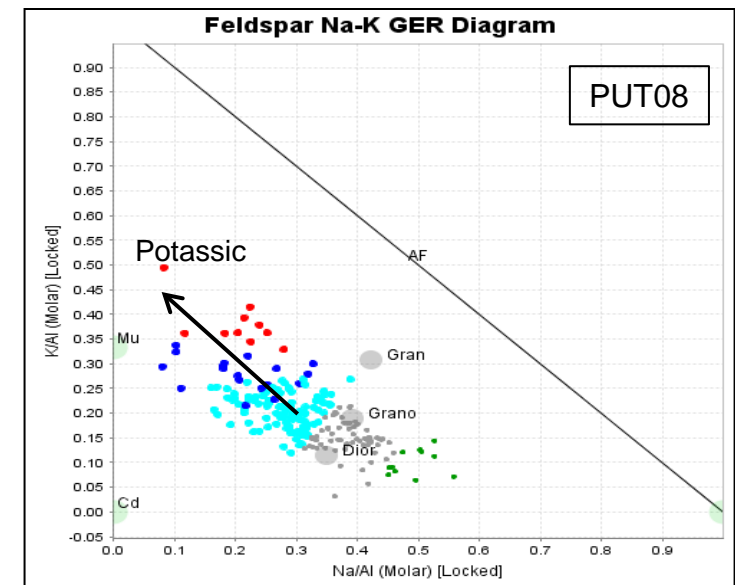
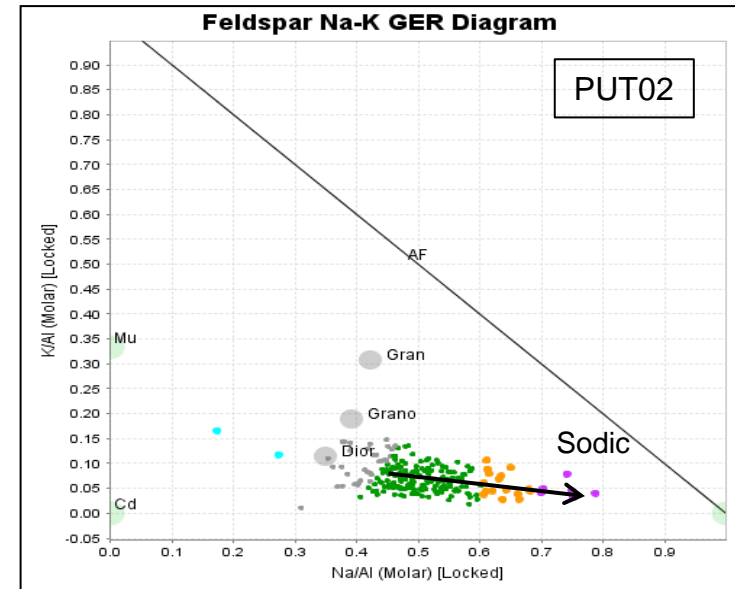
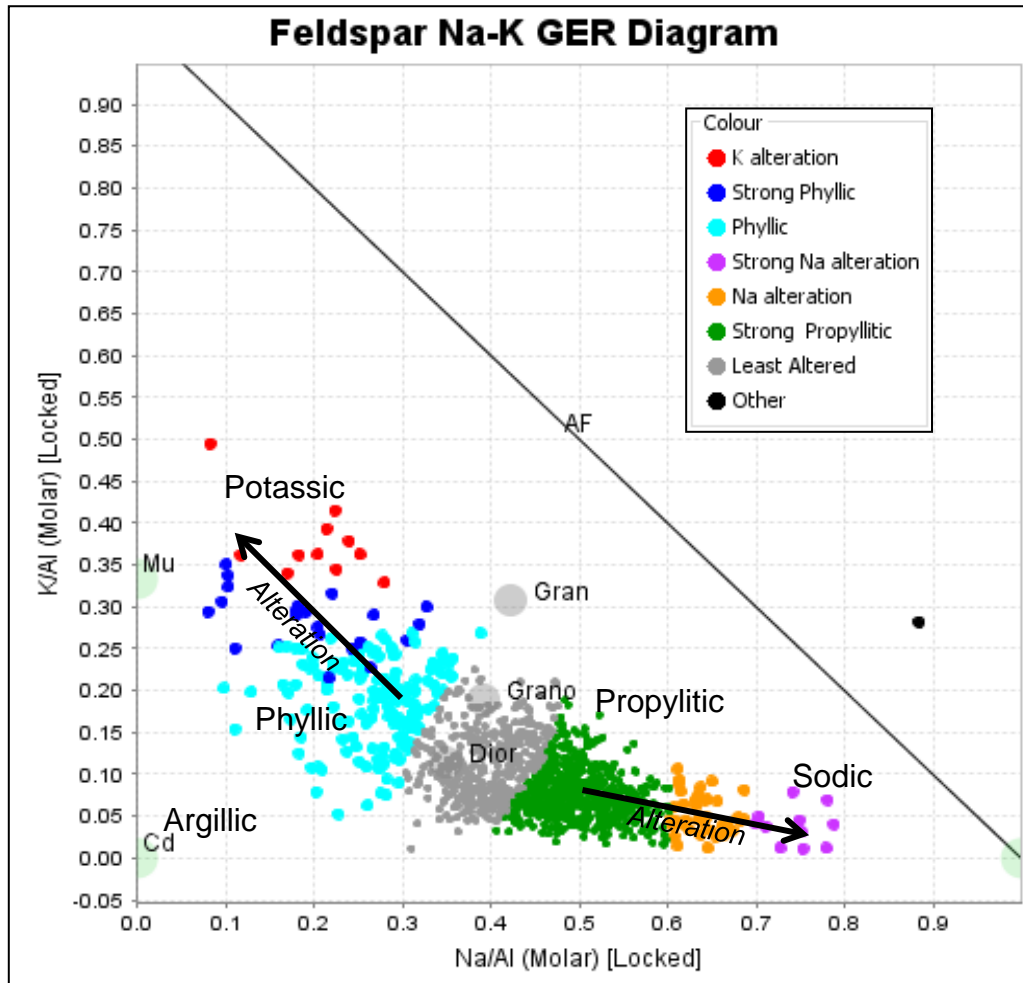
# PAMPA DE LAS PULGAS- JV DRILLING



# PUITE - ALTERATION IN DRILL CORE

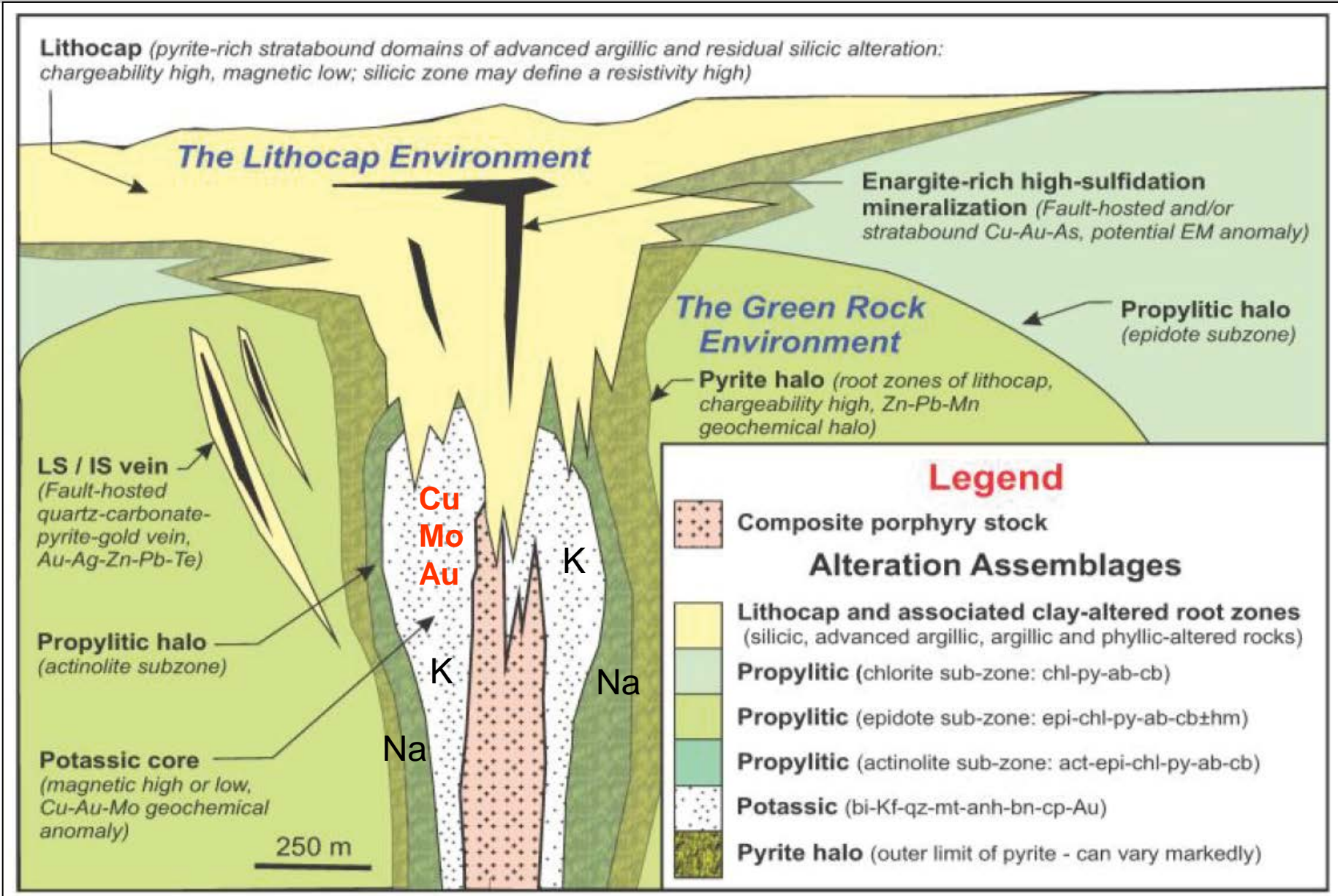


- Drill Hole Geochemistry shows two distinct alteration trends: Propylitic - Sodic and Phyllic - Potassic



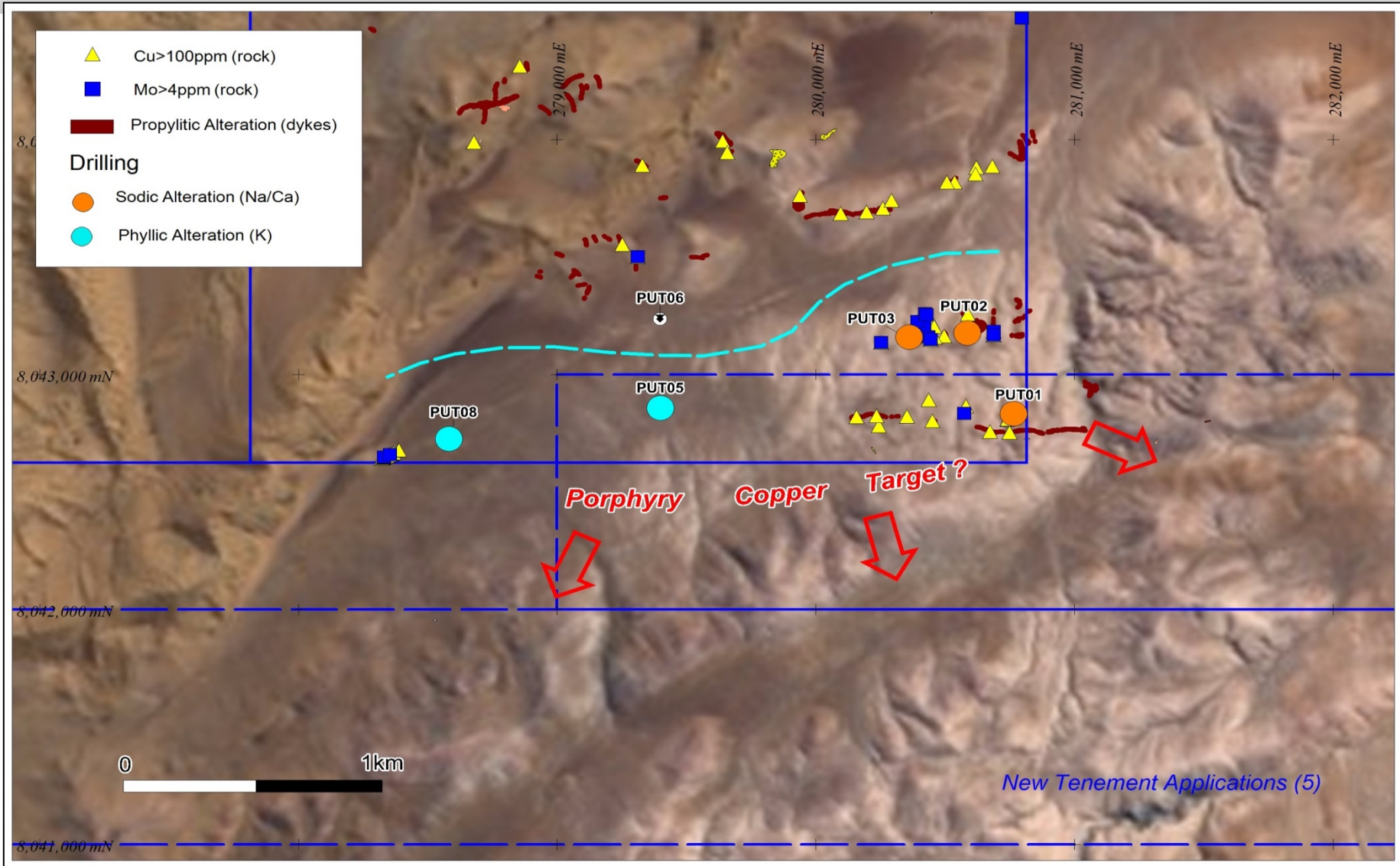


# PORPHYRY COPPER MODEL (after Cooke)





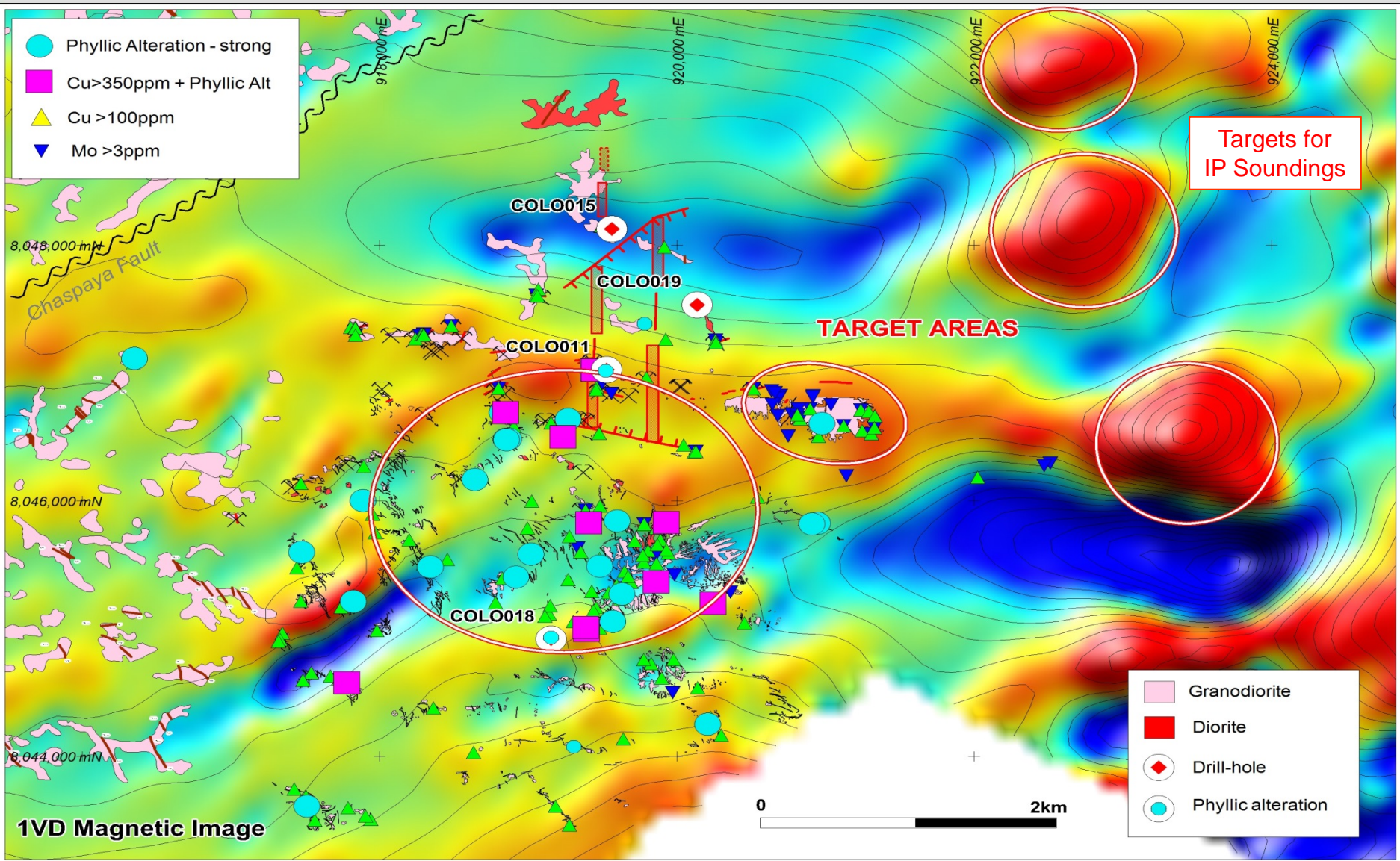
# PUITE - A NEW PORPHYRY ENVIRONMENT?



❑ Drill results suggest 5 of the 6 holes within halo to porphyry Cu mineralisation



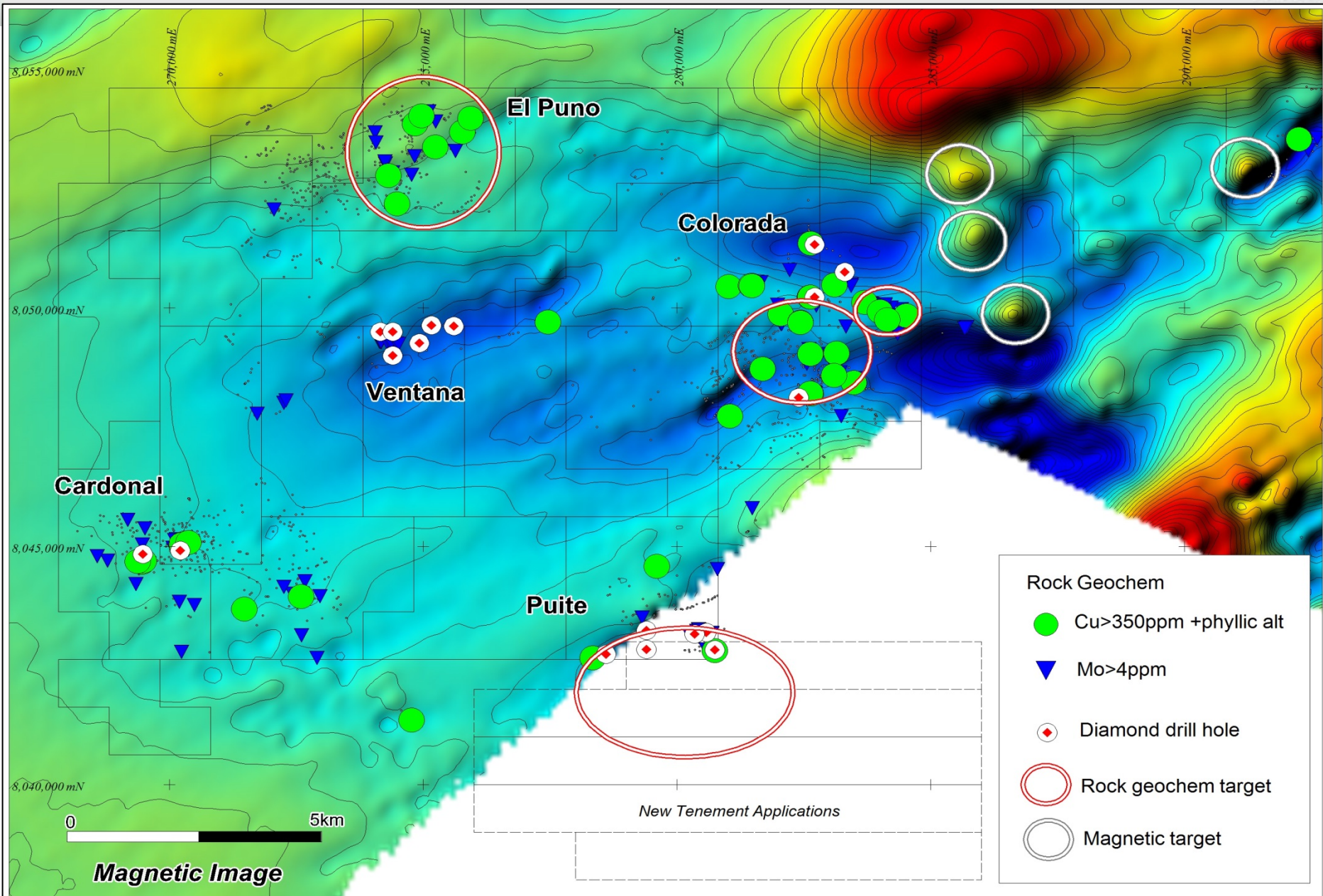
# COLORADA PROSPECT - UNTESTED TARGETS



□ Drill holes COL 011 and 018 located on margin of surface phyllic alteration

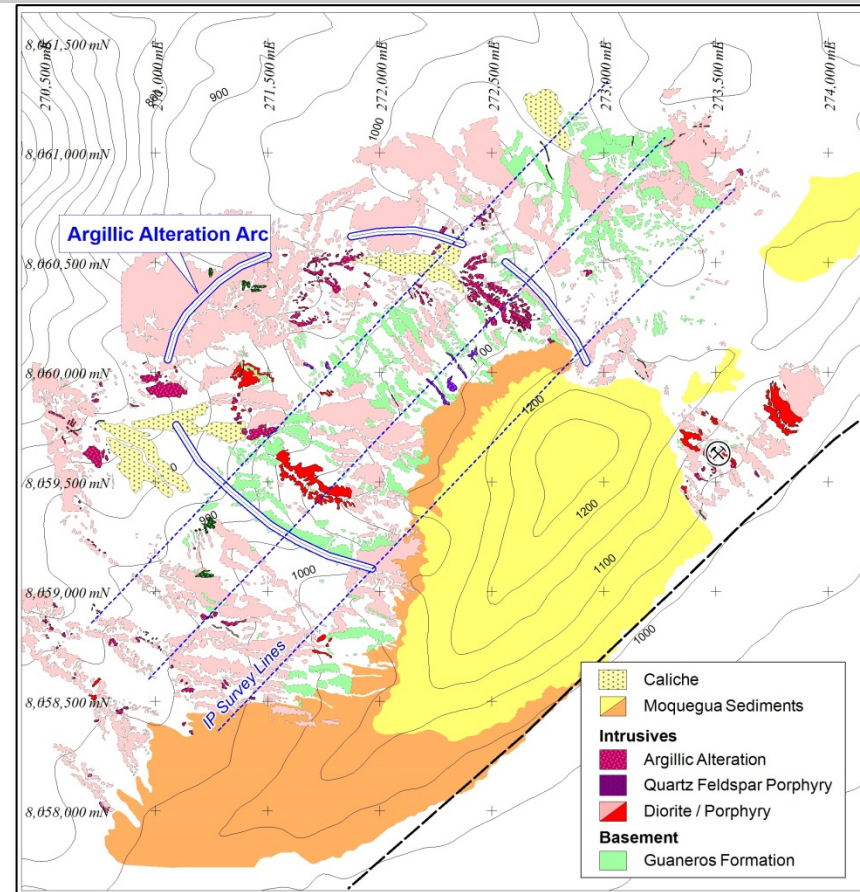
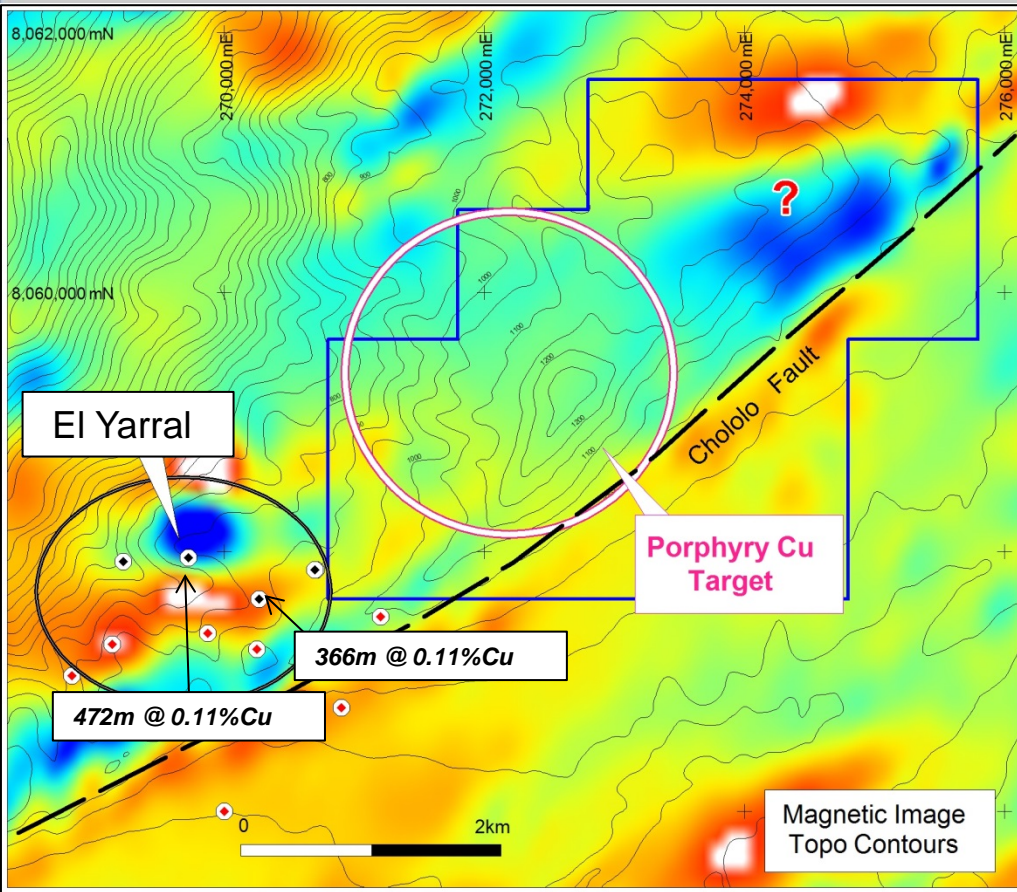


# PAMPA de LAS PULGAS - PRIORITY TARGETS



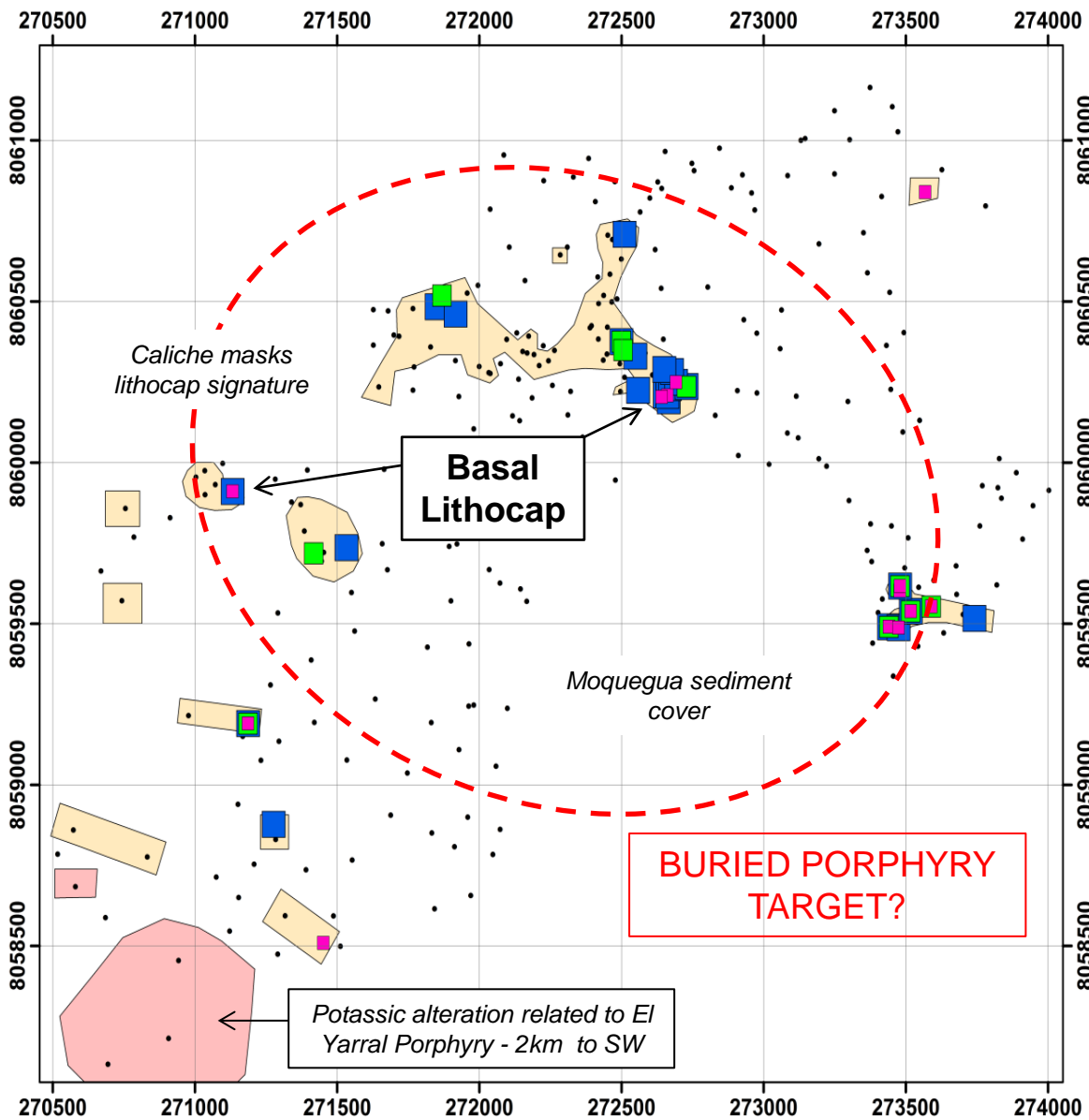


# CHOLOLO - A SECOND PORPHYRY TARGET



- New Porphyry Cu prospect – No historic drilling – Anomalous Cu & Mo + alteration
- 2km NE of known Porphyry – Low grade Cu but similar age to Tia Maria
- Mapping & sampling completed – IP to optimise drill sites – Attract JV Partner

# CHOLOLO - FULLY PRESERVED PORPHYRY?



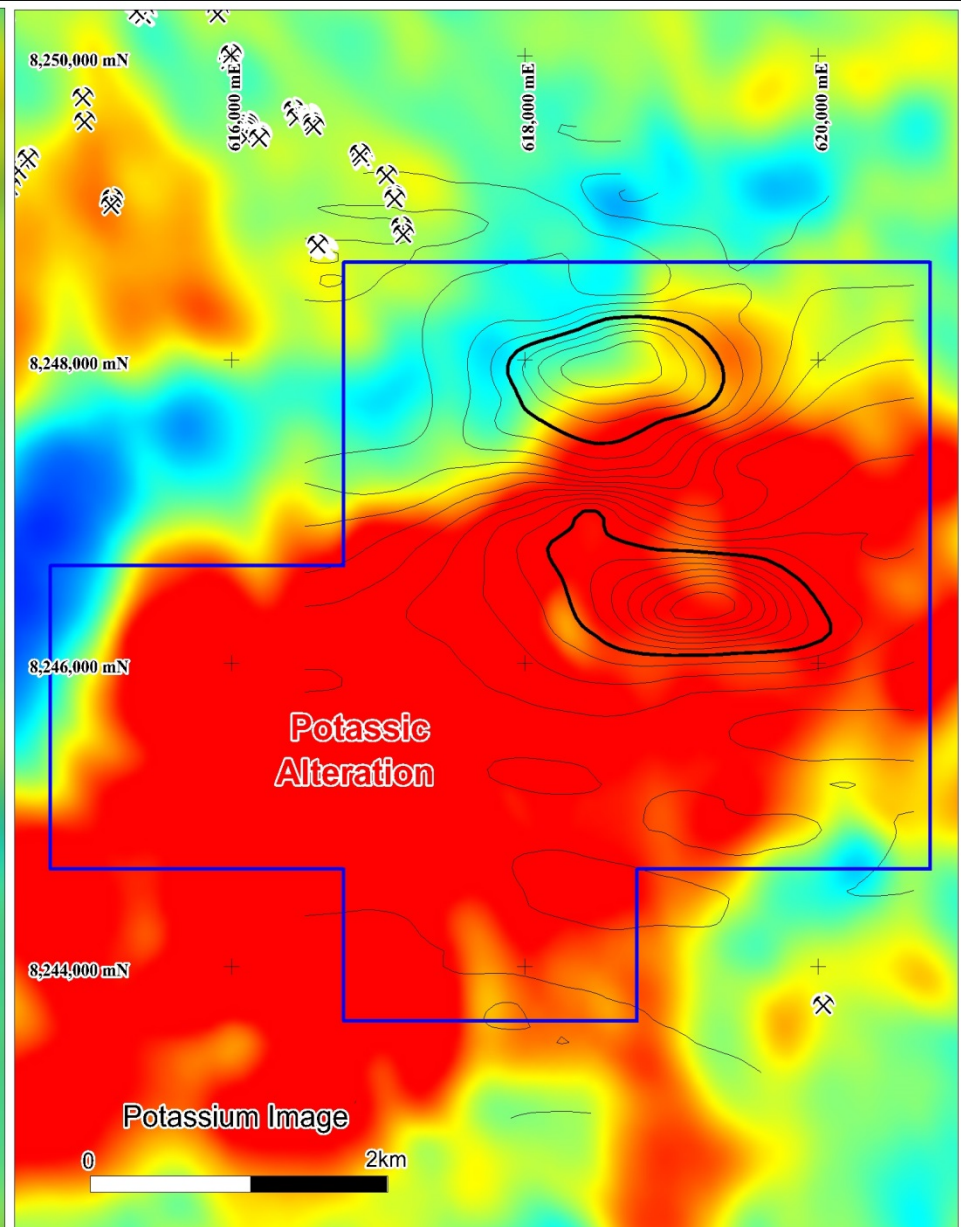
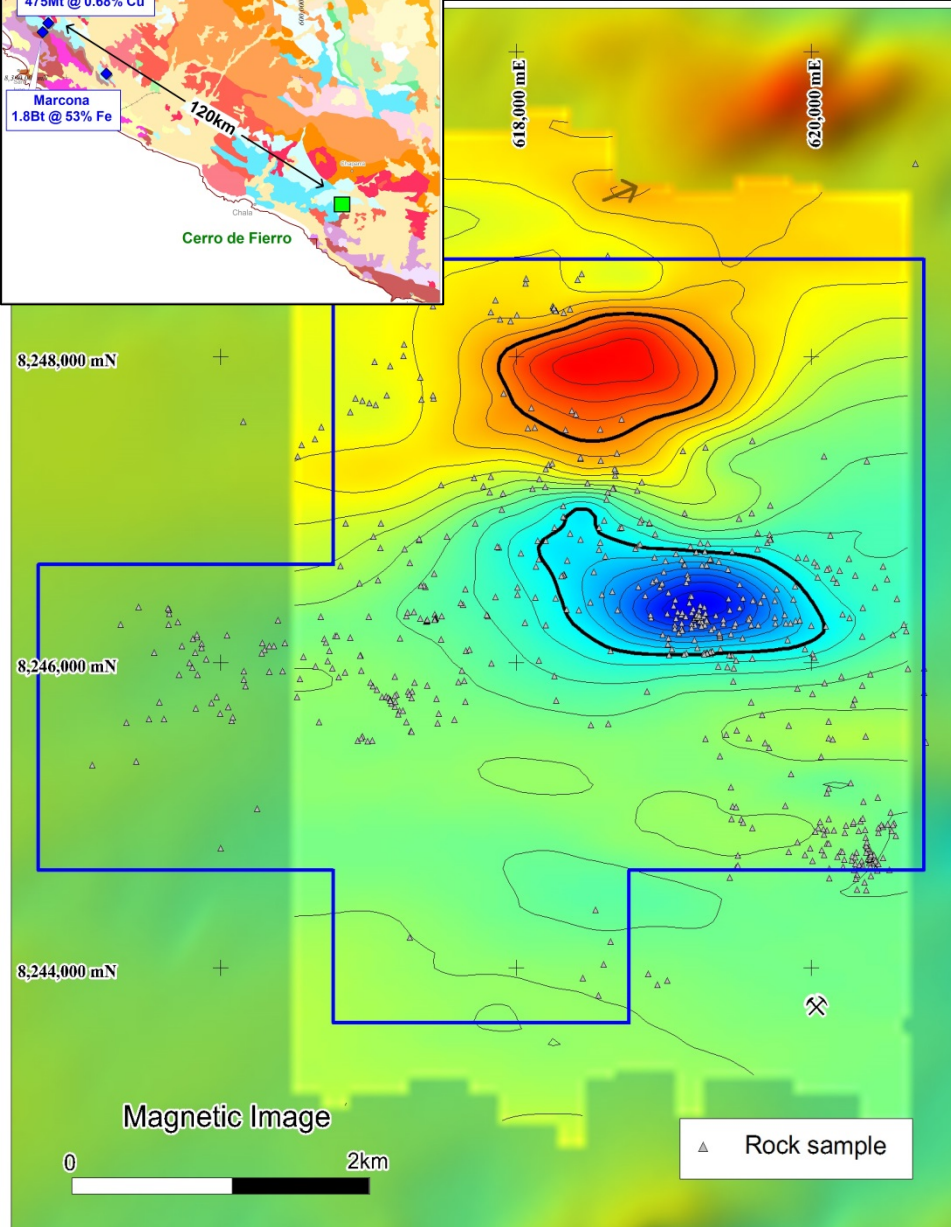
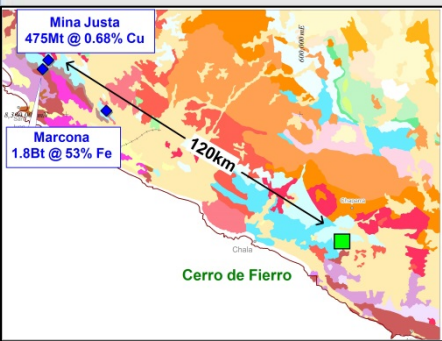
- Scattered lithocap outcrop contains high temp minerals (Na alunite and pyrophyllite) implying proximity to buried porphyry – preserved?
- Anomalous Mo, As, & Sb within lithocap suggests porphyry could be mineralised (Cu often leached from lithocap)
- Extent of Lithocap unknown due to sediment cover - significant target size inferred

Basal Lithocap Indicator Elements from Rock Data

- Mo >10ppm
- As >50ppm
- Sb >5ppm
- Rock sample

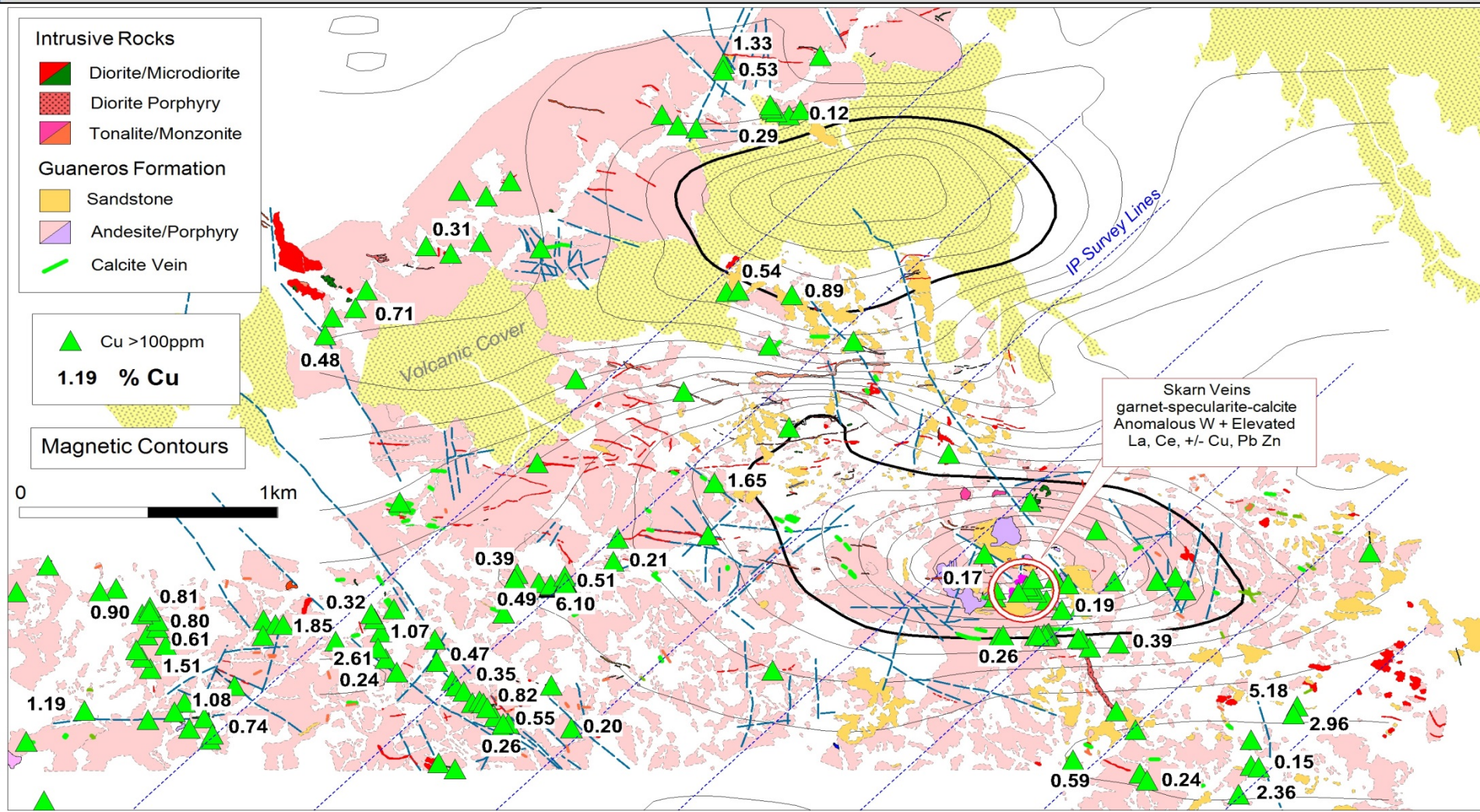


# CERRO DE FIERRO - IOCG TARGET?





# CERRO DE FIERRO – IOCG TARGET?



- Widespread Cu (+/-Au, Ag) in structures / veinlets and disseminated in volcanics
- Untested magnetic target (~2km<sup>2</sup>) – IP to optimise drill sites – attract JV partner



# CERRO DE FIERRO - CU in OUTCROP

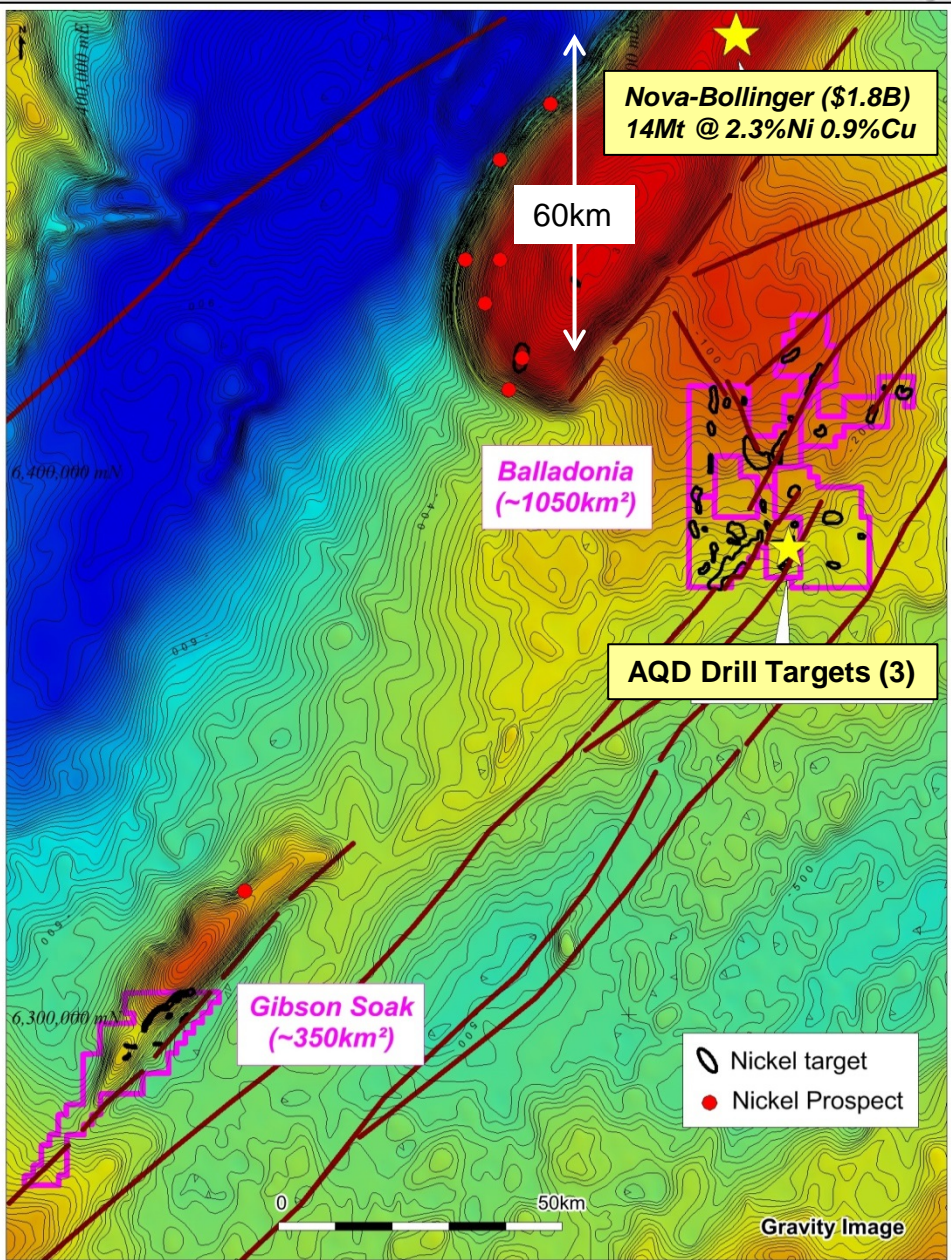
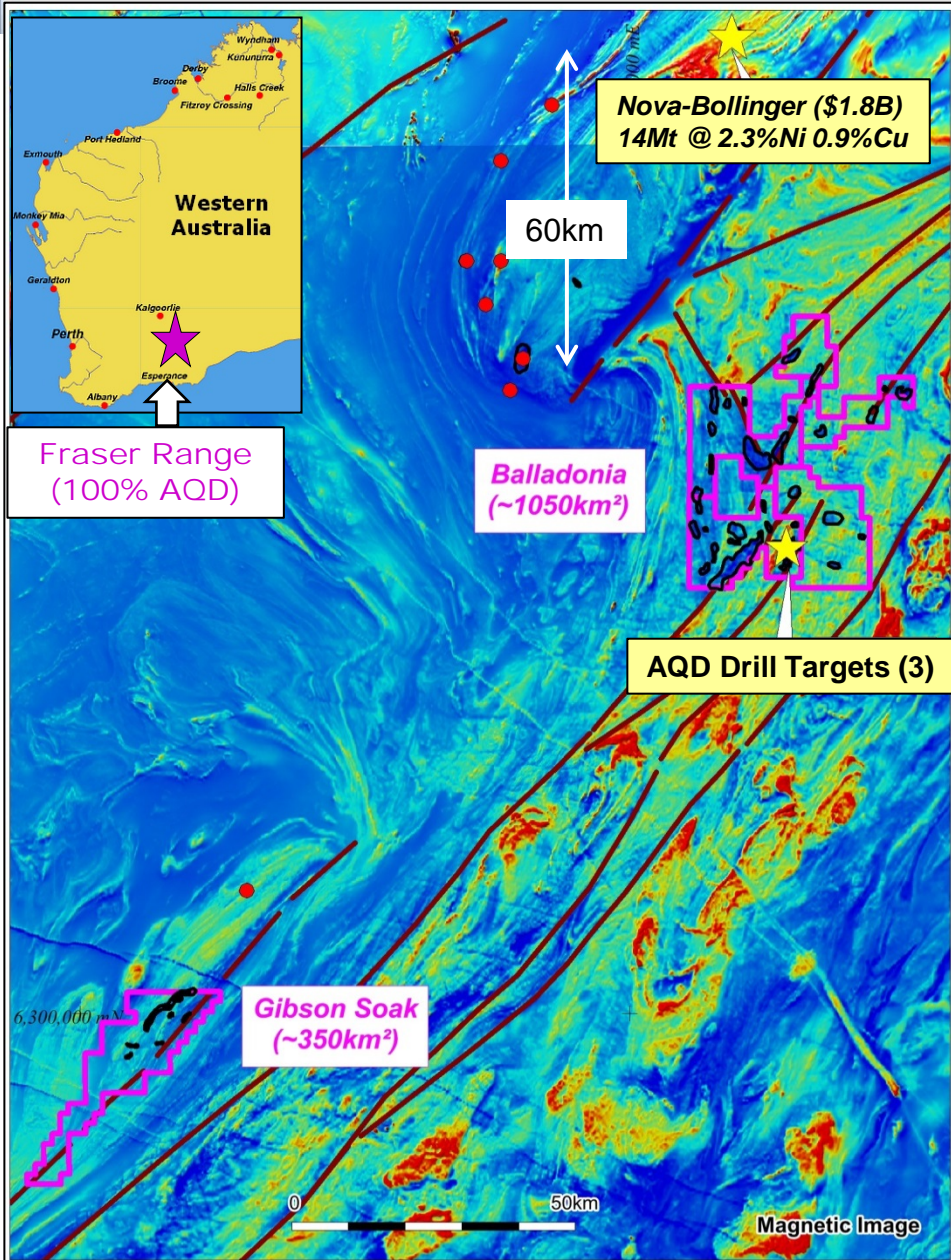


Dissem Cu in andesites  
(~16m @0.5%Cu)

Cu in structures marginal  
to depleted Cu zone

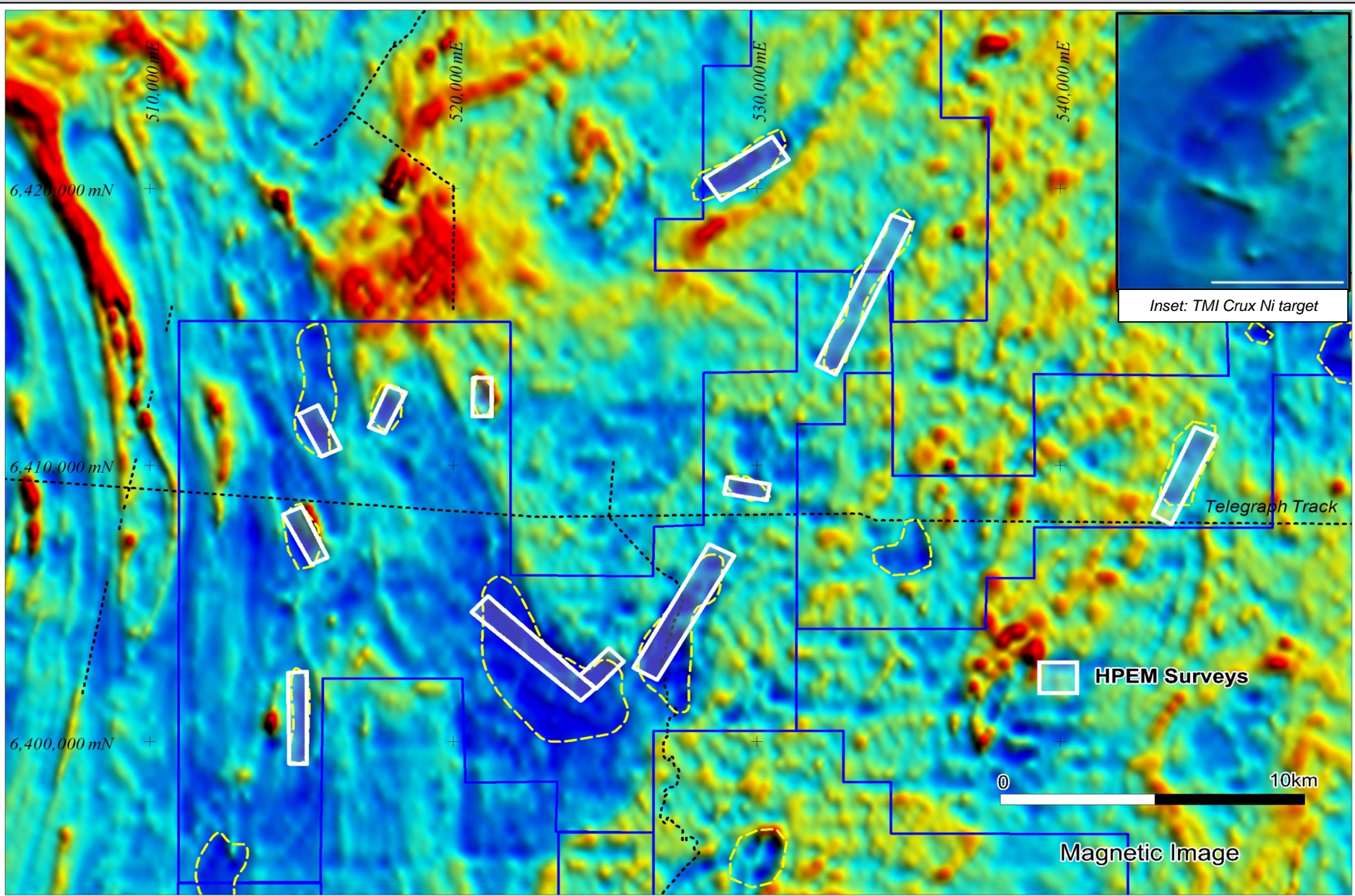


# FRASER RANGE NI-CU PROJECTS - 1400Km<sup>2</sup>



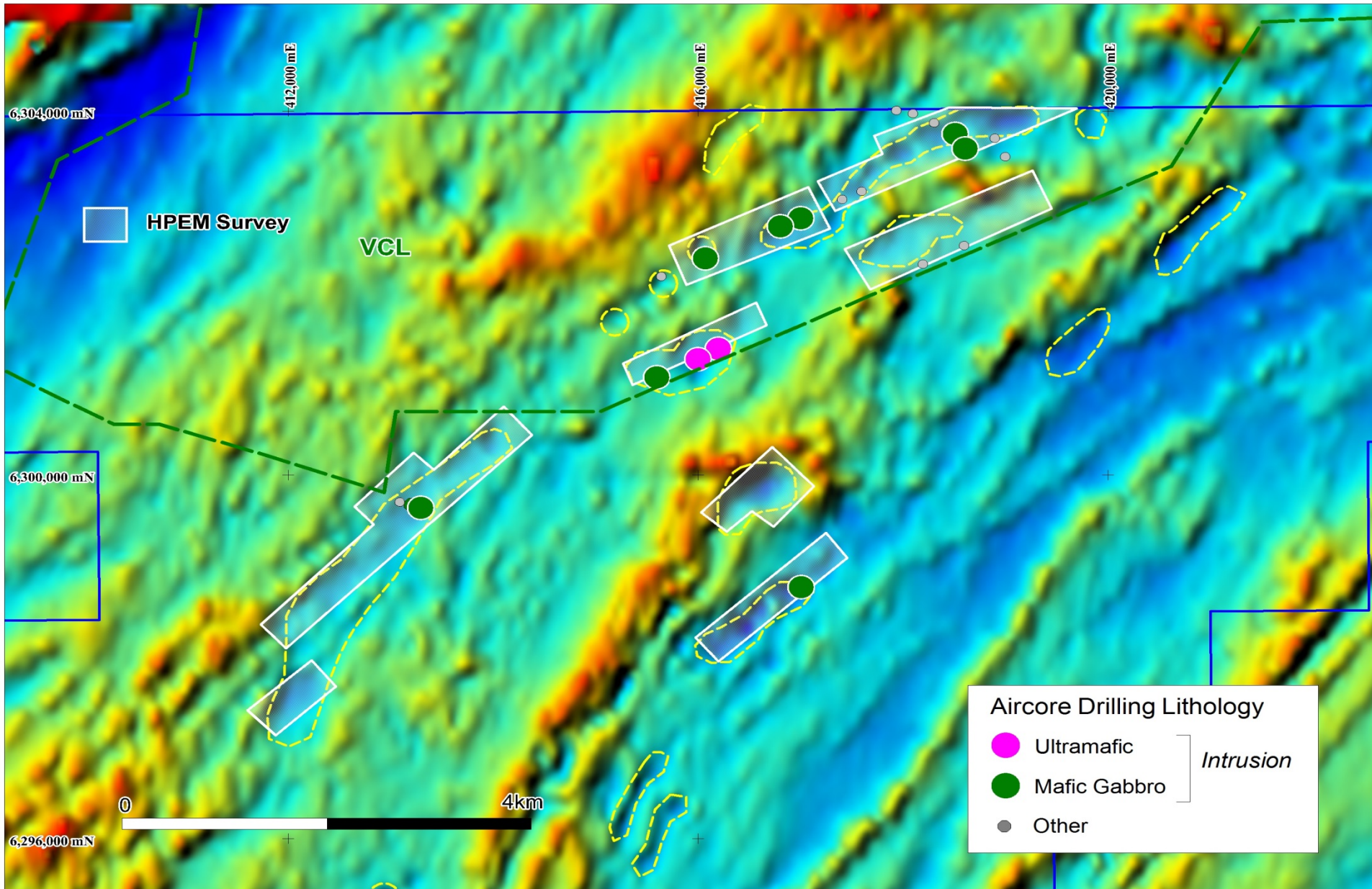


# BALLADONIA NI TARGETS - HPEM SURVEYS



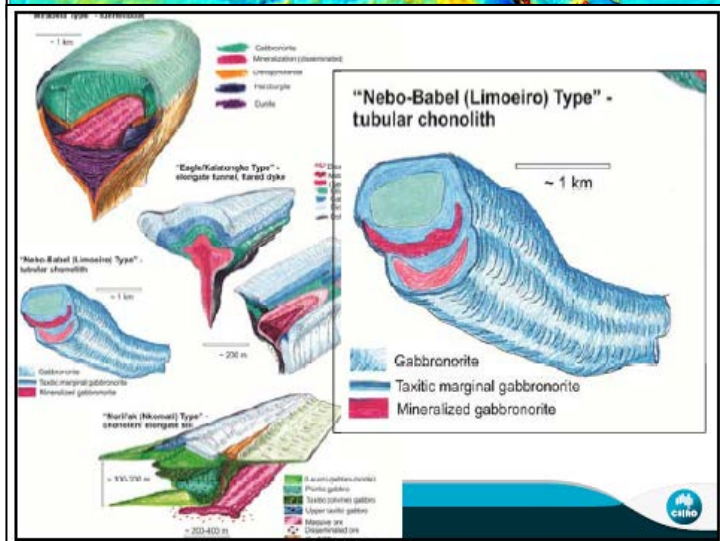
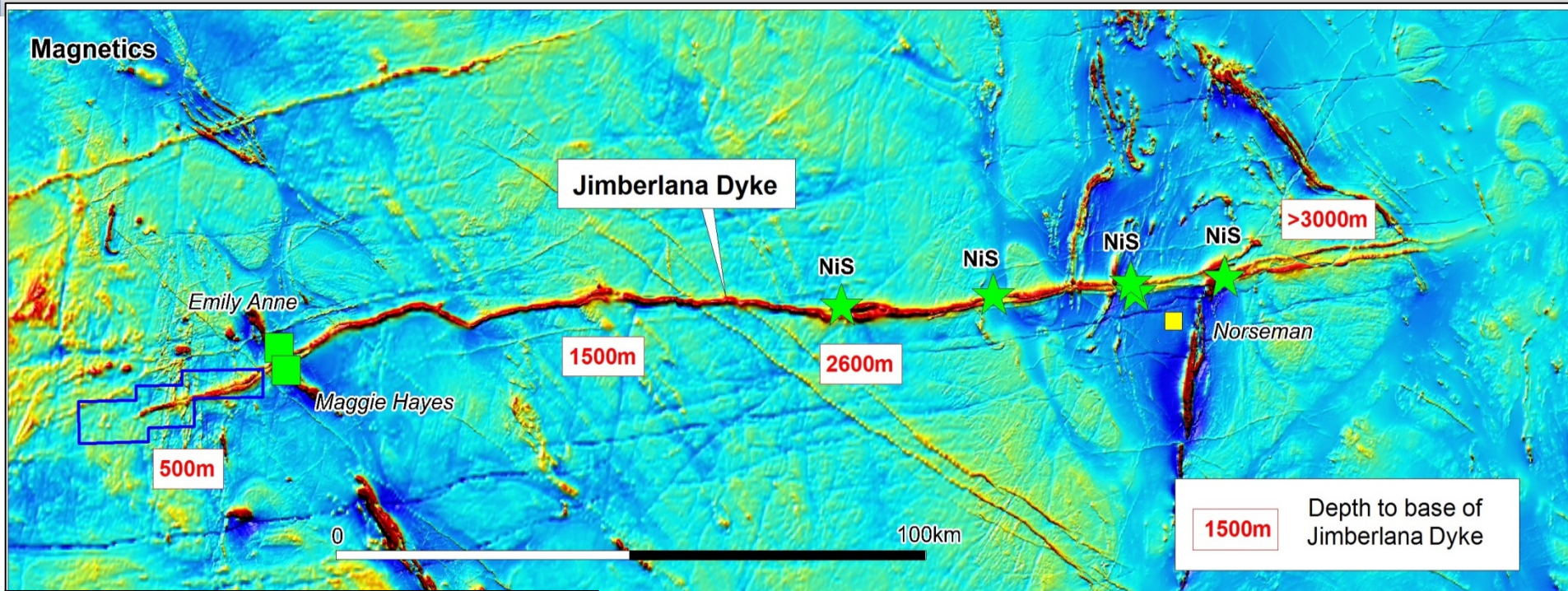


# GIBSON SOAK NI TARGETS - HPEM SURVEYS





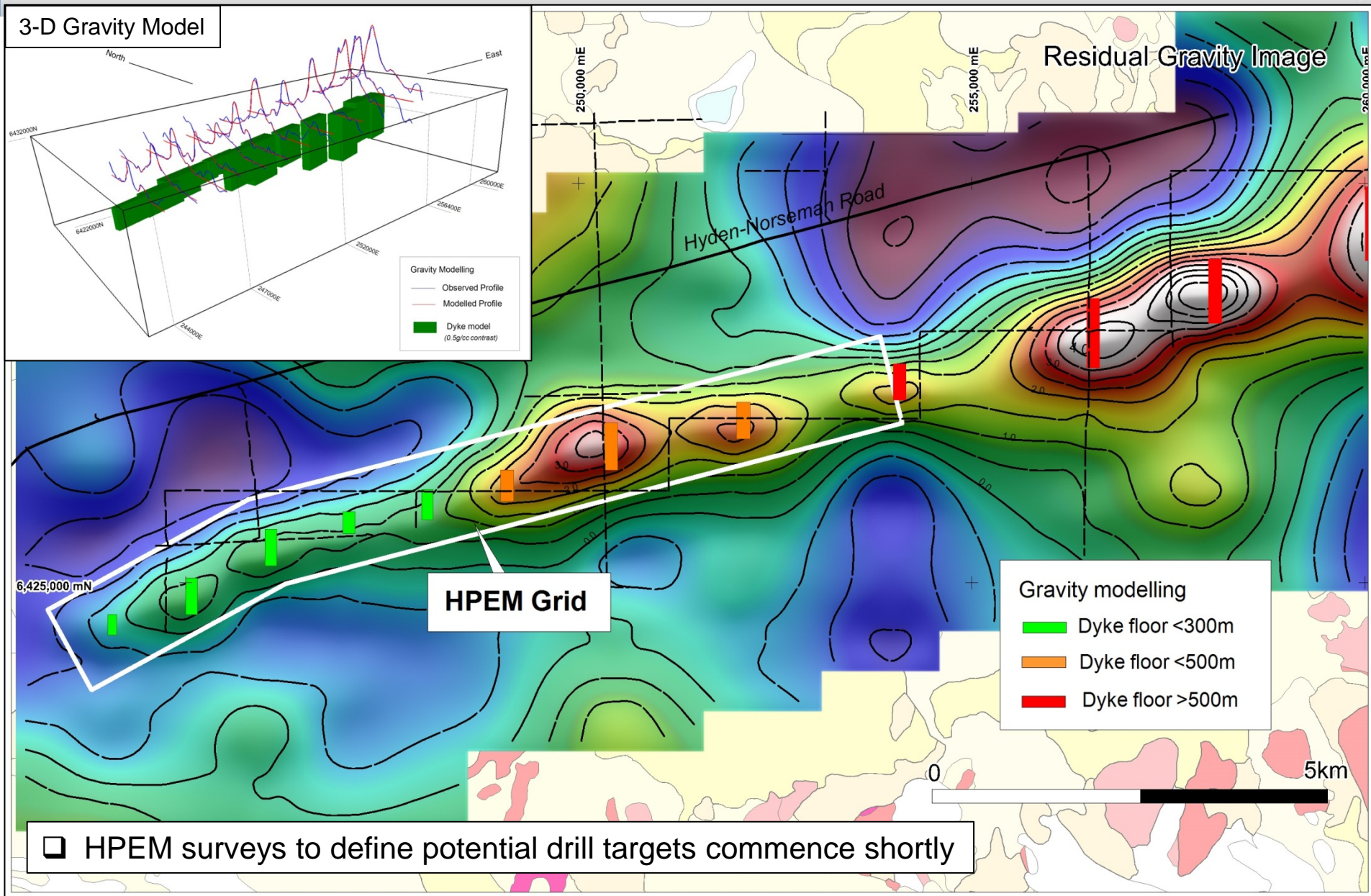
# JIMBERLANA - A NEW(?) NI-CU OPPORTUNITY



- ❑ The Jimberlana dyke is a large fertile intrusion with potential to host large scale Ni sulphide deposits
- ❑ Recent research suggests the best location to find these large deposits is at the base of the intrusion
- ❑ The western end of the Jimberlana Dyke is the only location along its 200km strike where the base occurs at depths <500m

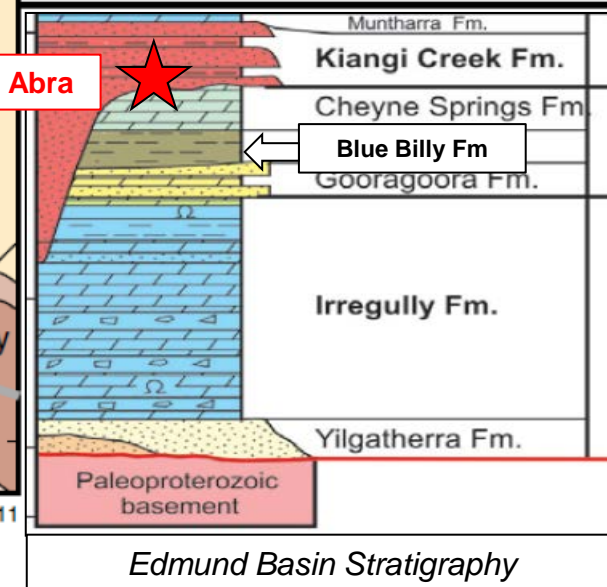
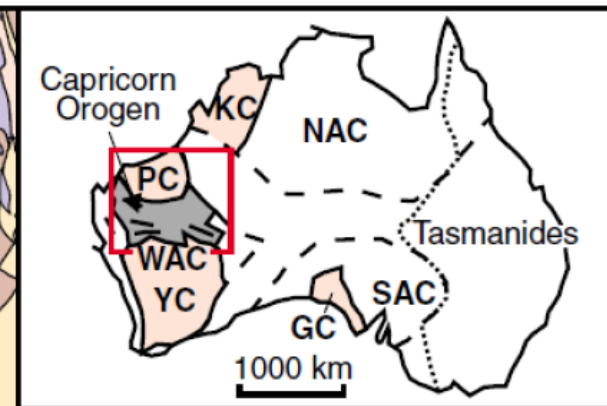
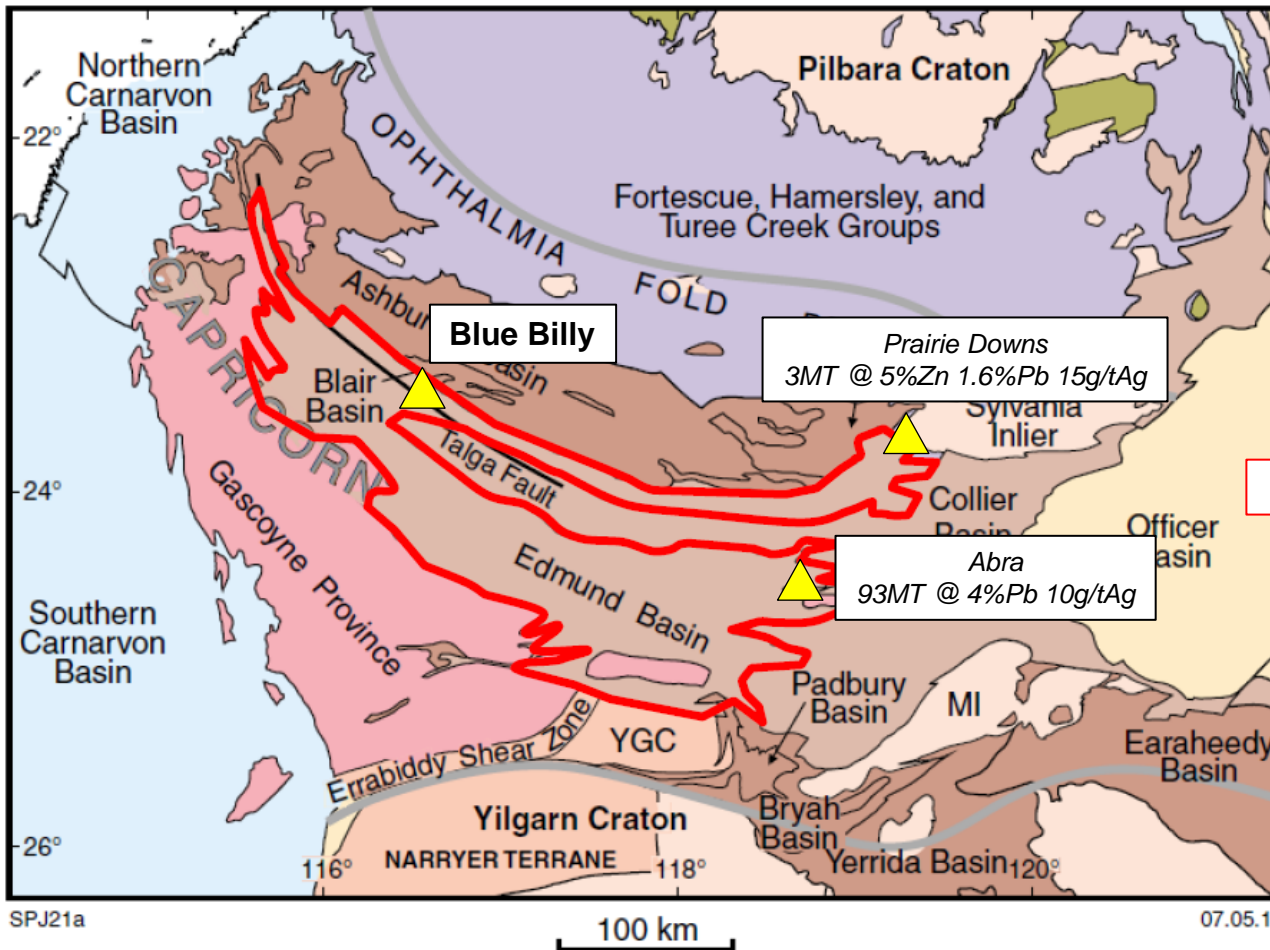


# JIMBERLANA - GRAVITY & HPEM SURVEY



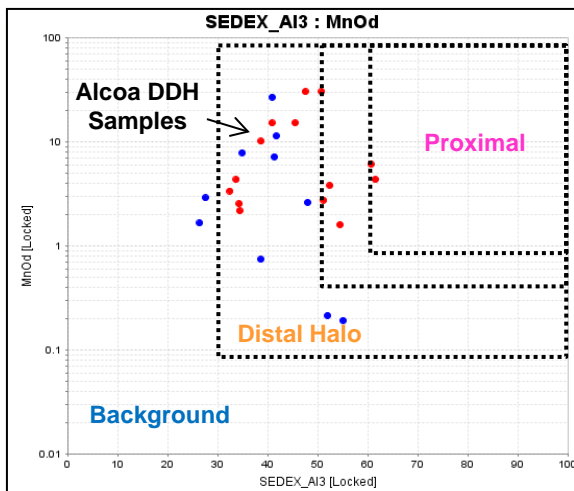


# BLUE BILLY ZINC - PROJECT LOCATION

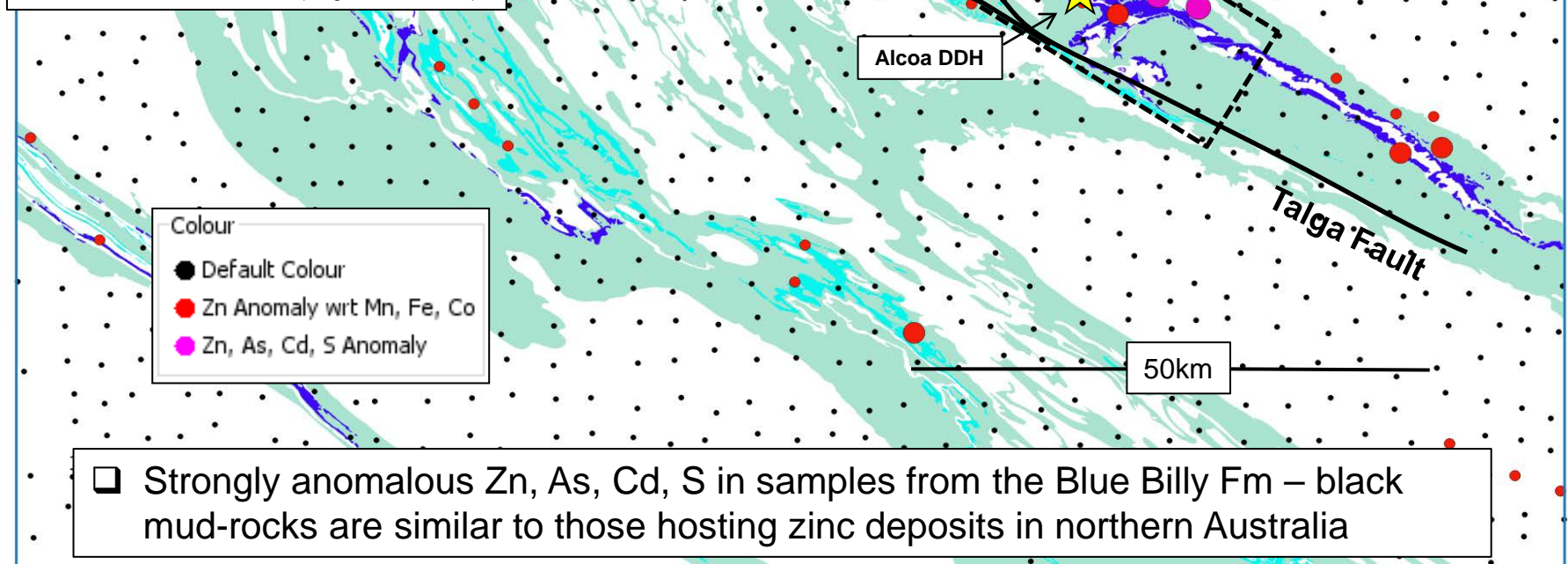


- Blue Billy is a sediment hosted zinc prospect within the Edmund Basin (WA) located at a similar stratigraphic position to the Abra and Prairie Downs(?) deposits

# BLUE BILLY – REGIONAL ZINC HALO?

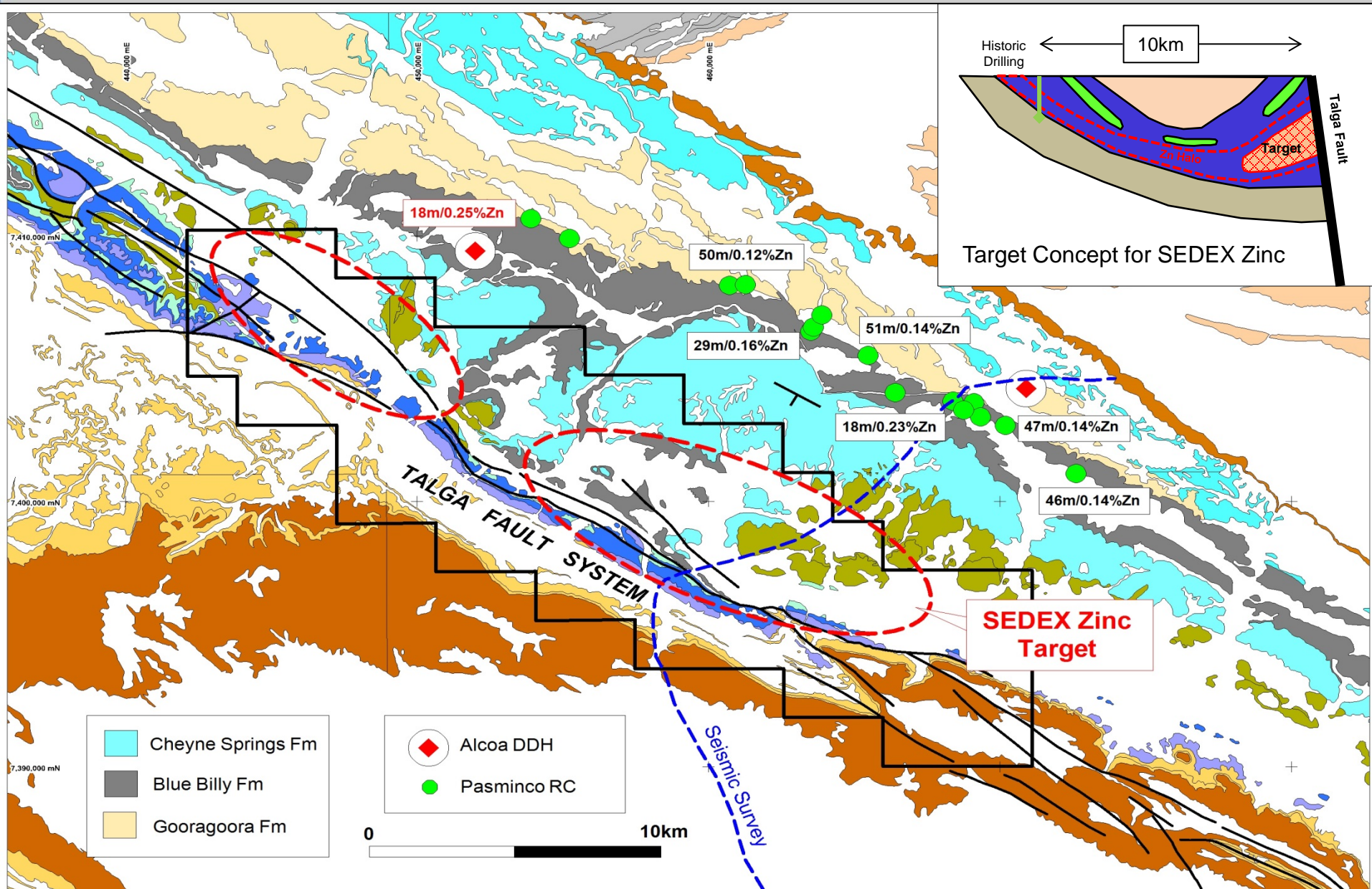


Alteration Index for Sedex Zinc (Large & McGoldrick)

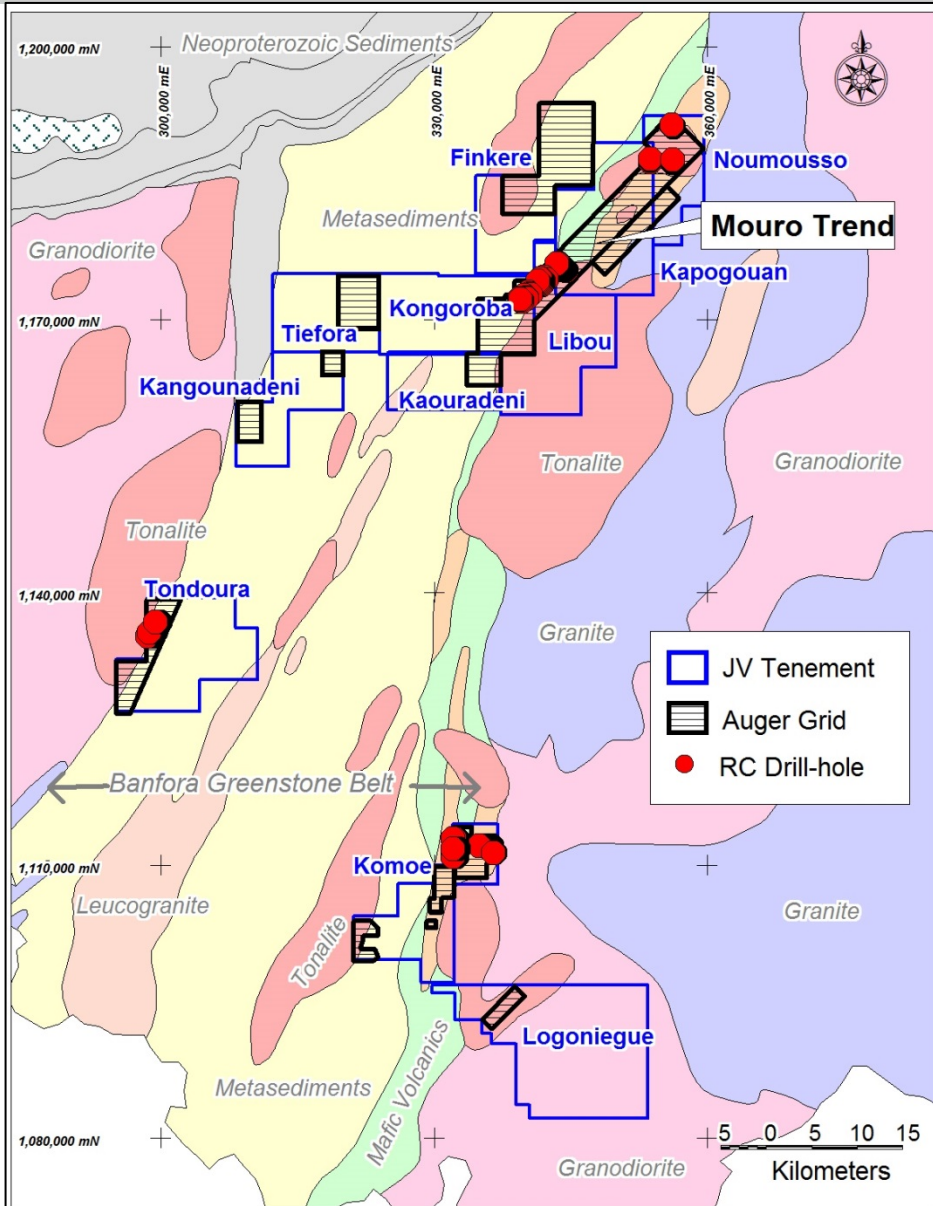




# BLUE BILLY SEDEX ZINC TARGET



# BANFORA GOLD JV - US\$7.5M TO EARN 80%



- Limited auger sampling in 2016 – 3,447 holes for 24,068m completed in 4 areas
- Further gold anomalies outlined parallel to regional structures
- Renewal of tenements for a further 3 year period in progress
- Further sampling and possible RC drilling awaits completion of renewal process
- Burkinor (a wholly owned subsidiary of SEMAFO) has earned 65% and elected to increase to 80% by further spending to 05/2017





## PERU

Chololo: IP to upgrade Porphyry Cu target (Jan)  
Cerro de Fierro: IP to upgrade IOCG target  
Puite: Map & sample - locate Porphyry Centre (Feb)  
Negotiate new Joint Venture(s)

## W. AUST

Jimberlana: HPEM to define NiS target (Nov)  
Fraser Range: HPEM to ID NiS targets (Jan)  
Blue Billy: Reprocess seismic ID Zn target (Jan)  
Seek Joint venture(s) for drilling?

## W. AFRICA

Banfora Gold: Restart of JV funded exploration

# CONTACT



A U S Q U E S T L I M I T E D

Graeme Drew  
Managing Director

8 Kearns Cres, Ardross, WA, 6153

Tel: +61 (8) 9364 3866

Email: [graeme@ausquest.com.au](mailto:graeme@ausquest.com.au)

[www.ausquest.com.au](http://www.ausquest.com.au)