



Definition Drilling at Mt Porter South

Sydney, 08 December 2016: Ark Mines Ltd (**ASX: AHK**) is pleased to announce that it plans to commence drilling at Mt. Porter South during December 2016.

AHK has submitted a Mine Management Plan for the definition and mine design drilling of the Mt Porter South oxide ore. It is anticipated that mining will commence at Mt. Porter South directly after mining the Mt. Porter Central oxide.

AHK plans to drill Mt. Porter South for the following outcomes:

- fully define the extent of the ore body (refer to the drill design in Figure 1 below);
- design a pit down to the base of oxidation;
- undertake sampling for waste management;
- undertake a ground water study; and
- use the information for the Mine Management Plan submission.

AHK aims to commence mining at Mt. Porter Central at the end of the 2016/2017 wet season and plans to submit the Mt. Porter South MMP for oxide mining early in 2017.

Following oxide mining at Mt. Porter Central and then Mt. Porter South, AHK will either mine the sulphide material at Mt. Porter Central and/or mine Mt. Porter North oxide material, if drilling is successful.

AHK will also be investigating the potential of mining the sulphide material along the Mt. Porter Central and North anticline by underground methods.

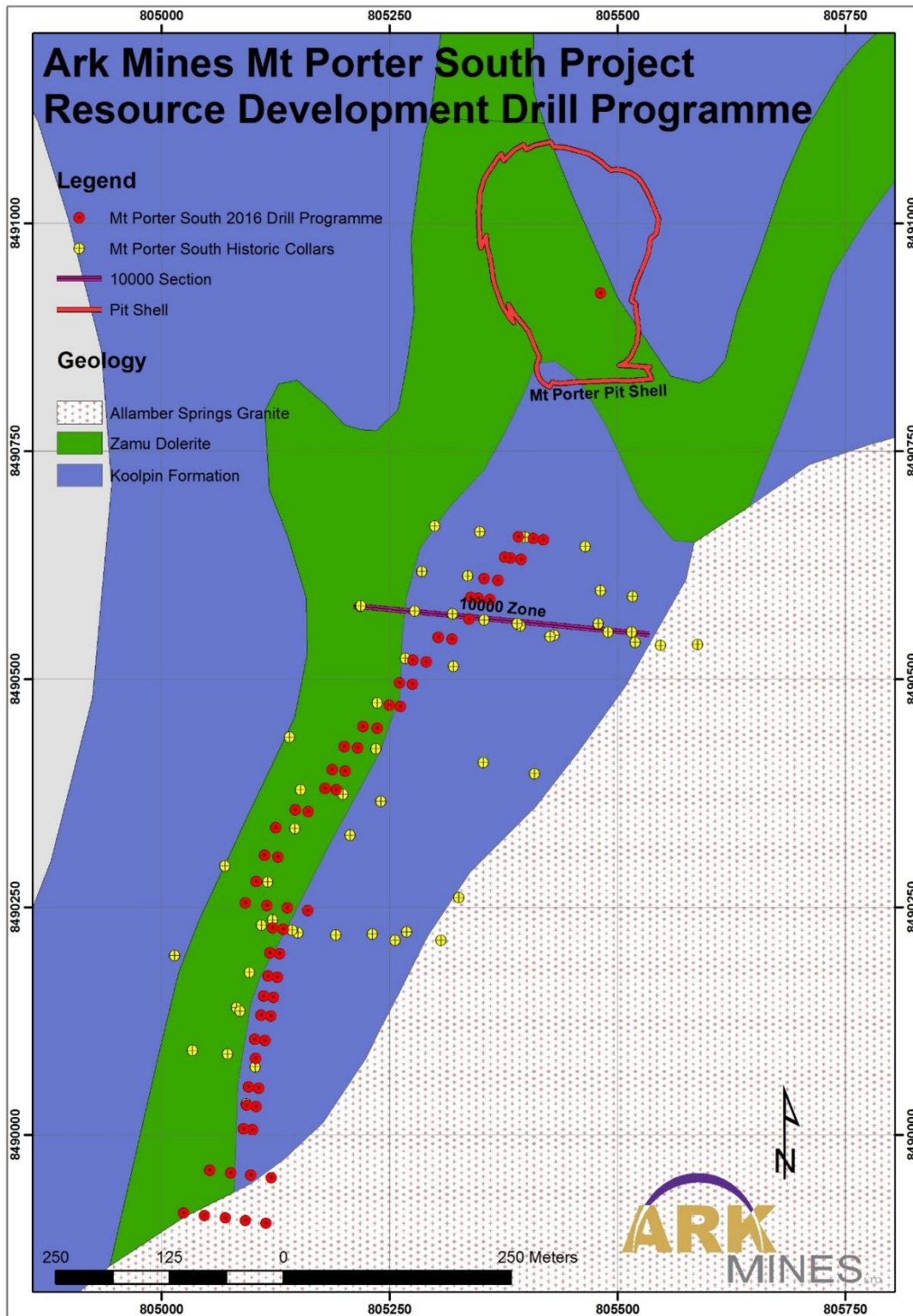


Figure 1 Arks Mt Porter south Drilling program



Mt. Porter South Historic drilling Highlights:

- 9 -10m thick mineralised zone
- 400m south of Mt. Porter
- 10m @ 1.15 g/t Au (9.82 @ 1.15 g/t Au true thickness)
- 9m @ 1.55 g/t Au (8.83 @ 1.55g/t Au true thickness)
- 19 out of 61 drill holes and 5 out of 16 trenches had significant intersections of gold mineralisation (>1m @ 1 g/t Au)
- Strong Au soil geochemical anomaly
- Strong As soil geochemical anomaly

Estimated Grade and tonnes of Mt Porter South at various depths

Main lode complete (extended to compliant limits) and not cut to surface (invalid Vol)

	Whole Vol	SG	tonnes	sample m	grade	grams	Oz.
	329,824.0	2.00	659,648.0	156.0	1.16	765,191.7	24,601.5
Main lode only, cut to surface and 17m.							
	Cut Vol	SG	tonnes	sample m	grade	grams	Oz.
Max	101,440.4	2.00	202,880.8	52.0	1.63	330,695.6	10,632.1
Min	101,440.4	2.00	202,880.8	156.0	1.16	235,341.7	7,566.4
Main lode only, cut to surface and 20m							
	Cut Vol	SG	tonnes	sample m	grade	grams	Oz.
Max	120,062.2	2.00	240,124.4	62.0	1.54	369,791.6	11,889.1
Min	120,062.2	2.00	240,124.4	156.0	1.16	278,544.3	8,955.4
Main lode only, cut to surface and 24m							
	Cut Vol	SG	tonnes	sample m	grade	grams	Oz.
Max	144,710.9	2.00	289,421.8	92.0	1.35	390,719.4	12,561.9
Min	144,710.9	2.00	289,421.8	156.0	1.16	335,729.3	10,793.9

Information Sourced from the Open Files at the NT Mines Department
 Homestake Gold Australia AR
 Annual Report ERL 116 – Mount Porter
 For the period 12/9/95 to 12/9/96
 Report No 1996/24

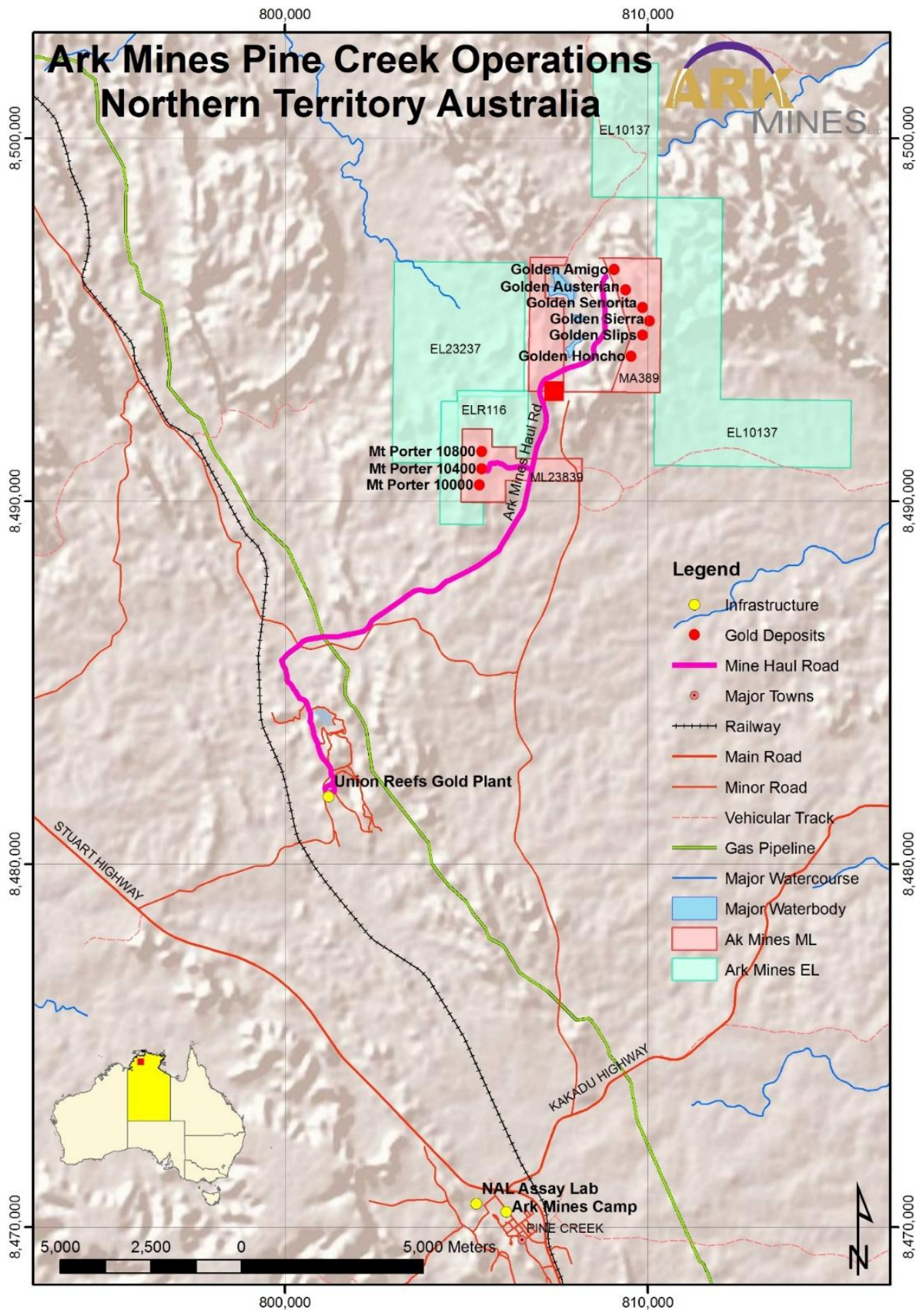
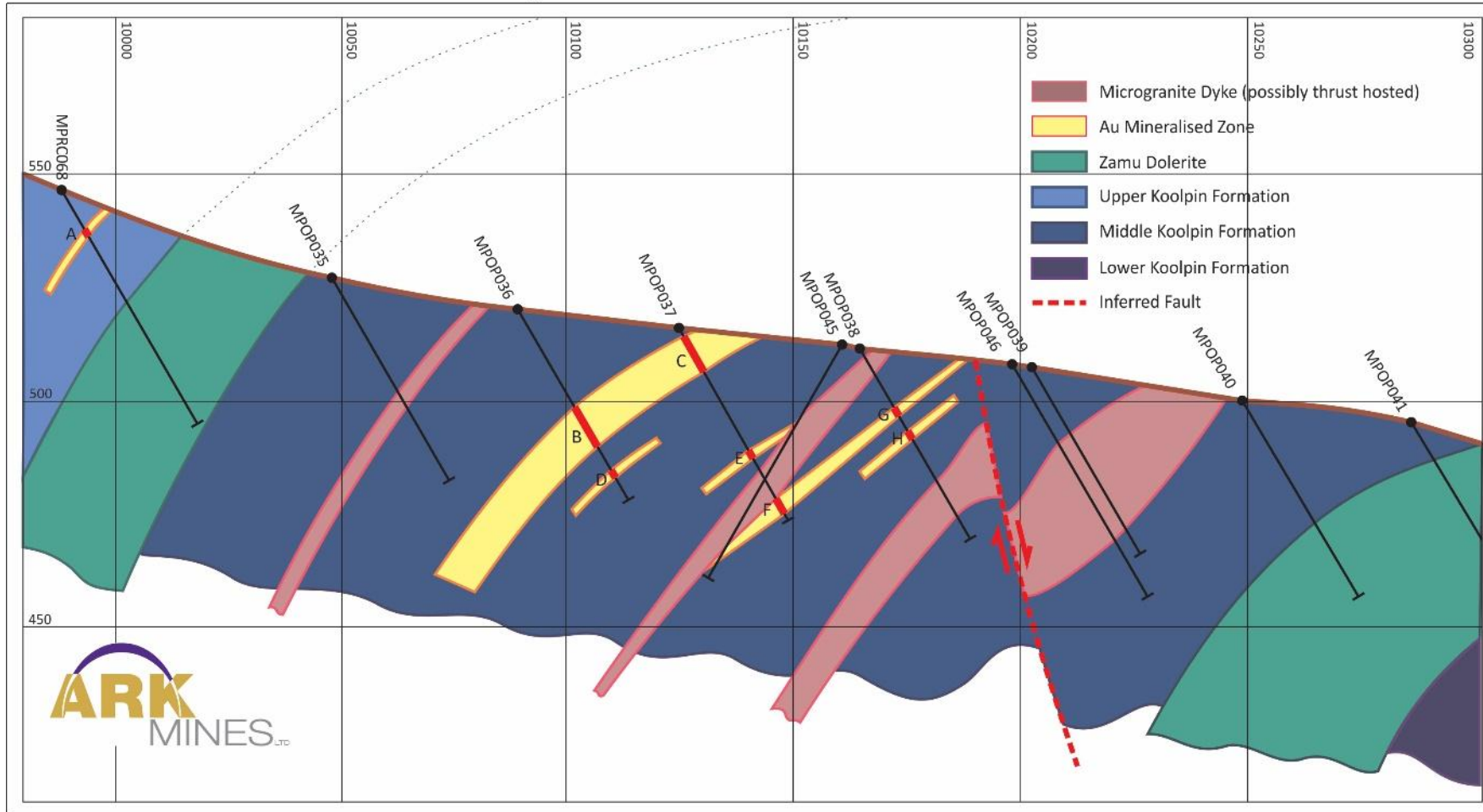


Figure 2 Location of Arks Tenements, haul road and Mine locations

Figure 3: Ark Mines Mount Porter Project 10000m N Section



Intercept Table

A: 2m at 1.12 g/t Au

B: 10m at 1.15 g/t Au

C: 9m at 1.55 g/t Au (inc. 4m at 2.69 g/t Au)

D: 2m at 1.03 g/t Au

E: 2m at 0.61 g/t Au

F: 4m at 0.56 g/t Au

G: 2m at 0.74 g/t Au

H: 2m at 1.03 g/t Au

Cutoff grade: 0.50 g/t Au

Topcut grade: 20.0 g/t Au

Figure 2 Cross section of the 10000 zone 400 m south of Mt Porter Mine site

Table 2: Significant Intercepts 10,000m N Section

Spatial Data							Intercept Data							
BHID	Easting (m)	Northing (m)	Elevation (m)	Azimuth (degrees)	Dip (degrees)	EOH (m)	Method	Section Label	From (m)	To (m)	Interval (m)	True Thickness (m)	Raw Au Grade (Au g/t)	Topcut 20 g/t Au Grade (Au g/t)
MPRC068	9988.0	10003.0	546.7	90	60	60	RC	A	10	12	2	1.83	1.12	1.12
MPOP035	10047.7	10004.6	526.9	90	60	51	OP	nil						
MPOP036	10089.1	10006.7	520.2	90	60	49	OP	B	25	35	10	9.82	1.15	1.15
								D	41	43	2	1.85	1.03	1.03
								nil	47	49	2	1.90	0.93	0.93
MPOP037	10124.5	10004.2	515.8	91	60	49	OP	C	2	11	9	8.83	1.55	1.55
								<i>including</i>	5	9	4	3.80	2.69	2.69
								E	31	33	2	1.87	0.61	0.61
								F	43	47	4	3.81	0.56	0.56
MPOP045	10160.9	10004.8	512.0	270	60	59	OP	nil						
MPOP038	10164.8	10002.7	511.5	97	60	49	OP	G	15	17	2	1.93	0.74	0.74
								H	21	23	2	1.90	1.03	1.03
MPOP046	10198.5	9995.3	507.8	90	60	59	OP	nil						
MPOP039	10202.8	9997.0	507.6	90	60	48	OP	nil						
MPOP040	10249.4	10015.6	499.7	90	60	50	OP	nil						
MPOP041	10286.9	10010.7	494.7	90	60	45	OP	nil						



About Ark Mines

ARK is a Sydney based company now readying itself for near term gold production, from assets in the Northern Territory. The company's aim is to establish itself as a medium level gold producer producing gold from tenements in the Northern Territory, developing prospective tenements in the Northern Territory and to acquire other prospective gold projects in Australia.

FURTHER INFORMATION:

Roger Jackson, Managing Director, Ark Mines Limited: +61400 408 550

The information in this announcement that relates to Exploration Results, Mineral Resources or Ore Reserves has been compiled by Roger Jackson BSc, Grad Dip Fin Man, Dip Ed, AICD, who is a Member of The Australasian Institute of Mining and Metallurgy and who has more than five years' experience in the field of activity being reported on. Mr Jackson is a director of the Company. Mr Jackson has sufficient experience, which is relevant to the style of mineralisation and type of deposit under consideration and to the activity, which he is undertaking to qualify as a Competent Person as defined in the 2012 Edition of 'Australasian Code for Reporting of Exploration Results, Mineral Resources and Ore Reserves'. Mr Jackson consents to the inclusion in the announcement of the matters based on his information in the form and context in which it appears.