

30 August 2019

## 2019 ANNUAL COAL RESOURCES & RESERVES SUMMARY

Stanmore Coal Limited (Stanmore) released a combined updated Coal Reserves at Isaac Plains and its 2019 annual Resources and Reserves summary on 21 August 2019.

Stanmore has made the following changes

Released a separate “2019 Open Cut Coal Reserves update for Isaac Plains Mine and Isaac Plains East” dated 30 August 2019. There were no changes to the Reserves.

Released a separate “2019 Annual Coal Resources and Reserves summary” dated 30 August 2019 (attached) which has the following changes:

- Inclusion of the maiden Isaac Downs coal Reserves published on 21 December 2018 in table 2 “Coal Reserves Status at Isaac Plains Complex by Category and Project area (assessed according to the 2012 JORC Code)”; and
- Stanmore’s confirmation for its JORC 2012 coal resources and reserves that it is not aware of any new information or data that materially affects the information included in the coal resources and reserves, and that all the material assumptions and technical parameters underpinning the estimates continue to apply and have not materially changed.

Yours faithfully

**Ian Poole**  
Company Secretary



## 2019 ANNUAL COAL RESOURCES & RESERVES SUMMARY

### Highlights

- Stanmore Coal has added significant Coal Reserves over the last 12 months as a result of the inclusion of the maiden Isaac Downs Reserves to sustain a long-life mining operation using existing infrastructure at the Isaac Plains Complex
- The Coal Resources across all tenements held totalled 1.7 billion tonnes
- Total Coal Reserves formally declared and published are now 169 million tonnes which is a 16% increase compared to 12 months ago

Stanmore Coal Limited (Stanmore) (ASX: SMR) is pleased to provide an updated summary of the company's Coal Resources and Coal Reserves reported under the relevant Australasian Code for Reporting of Exploration Results, Mineral Resources and Ore Reserves ('the JORC Code') at the time each report was published. As further work is undertaken on the relevant projects under Stanmore's control, the Coal Resources, Coal Reserves and Marketable Coal Reserves will be updated to meet the standard of the latest version of the JORC Code applicable.

Stanmore Coal has successfully added significant Coal Resources and Coal Reserves in and around the Isaac Plains portfolio over the last 12 months. In particular, the Coal Resources at Isaac Downs Project increased during the year, and a Maiden Coal Reserve was published for that project in December 2018<sup>1</sup>.

**Table 1: Coal Resources status at the Isaac Plains Complex by category (reported in accordance with the 2012 JORC Code)**

Resource Category	Coal Resources (as at end Jun 2018)	Updated Coal Resources (as at end Jun 2019)			
	Total IPC	IP & IPE	ID	IS	Total
Measured (Mt)	65.7	35.1	17	11.9	<b>64.0</b>
Indicated (Mt)	48.2	30.1	12	14.5	<b>56.6</b>
Total M&I Resources (Mt)	113.9	65.2	29	26.4	<b>120.6</b>
Inferred (Mt)	43	17	4	25	<b>46</b>
Total Resources (Mt)	<b>157</b>	<b>82.2</b>	<b>33</b>	<b>52</b>	<b>167</b>

Note 1: IPC – includes Resources at Isaac Plains, Isaac Plains East, and Isaac Downs areas; IP – Isaac Plains; IPE – Isaac Plains East; ID – Isaac Downs Project; IS – Isaac South Project (within EPC755)

Note 2: The IPC Coal Resources above shows the May 2018 Coal Resource Report and does not include a reduction due to mining depletion during FY19 of approximately 3 Million tonnes

<sup>1</sup> ASX Announcement dated 21 December 2019 "Supplementary Target Statement" First Supplementary Target's Statement.

Further definition of the Isaac Downs Project area included an assessment of Coal Resources and Coal Reserves that combine the MDL137 and EPC728 areas acquired from Peabody in 2018 with areas of EPC755 held by Stanmore. The formal update was provided to the market on 21 December 2018.

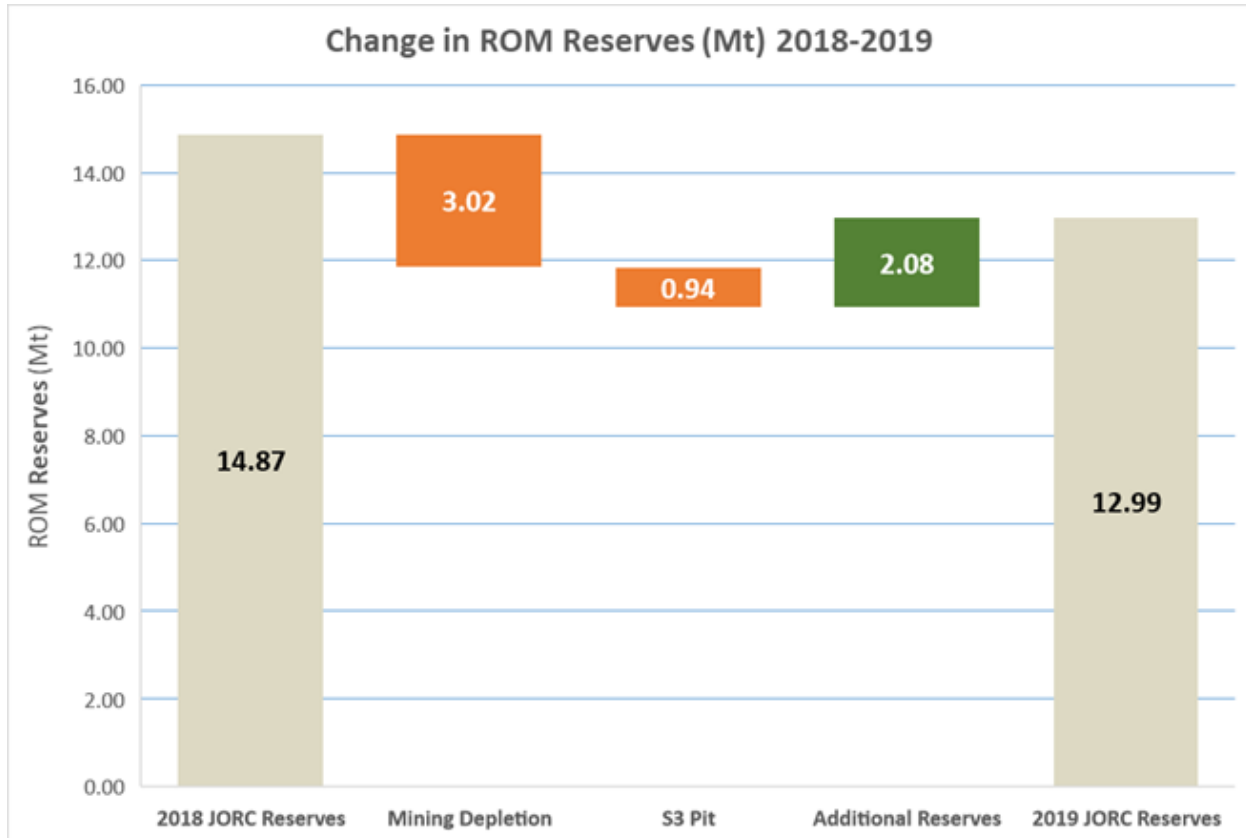
**Table 2: Coal Reserve Status at the Isaac Plains Complex by Category and Project area (assessed according to the 2012 JORC Code)**

Reserve Category	Previous Coal Reserves			Updated Coal Reserves				Change
	(as at March 2018)	(as at Dec 2018)	2018	(as at end June 2019)				
	IP Complex (IP, IPE & IPU)	ID	Total	IP & IPE	IPU	ID	Total	
Proved (Mt)	12.1	17	29.1	10.3	-	17	27.3	-6.2%
Probable (Mt)	15.7	7.5	23.2	2.7	12.9	7.5	23.1	-0.4%
Total Recoverable Reserve (Mt)	27.8	24.5	52.3	13	12.9	24.5	50.4	-3.6%
Coking coal (Mt)	19.1	15.8	34.9	9.6	8.2	15.8	33.6	-3.7%
Thermal coal (Mt)	1.8		1.8	0.4	1.2		1.6	-11.1%
Total Marketable Reserve (Mt)	20.9	15.8	36.7	10	9.4	15.8	35.2	-4.1%

Note 1: IPC – Isaac Plains Complex; IPU – Isaac Plains Underground Project; ID – Isaac Downs Project

Note 2: The IPC Opencut figures have been updated as at end June 2019 and include the 3 million tonnes of mining depletion

The following waterfall chart illustrates the change in Coal Reserves at the Isaac Plains Opencut Complex (excluding Isaac Downs) since 2018. A reduction in Coal Reserves due to mining depletion and the removal of Reserves contained in the S3 pit at Isaac Plains were partially offset by additional Coal Reserves. Further evaluation of the S3 pit has highlighted that the previous Reserves contained within this pit will be difficult and potentially more costly to extract than other areas within IPM. Additionally, these Reserves restrict strategic dump room for IPE waste. For these reasons, the previous Reserves contained within the S3 pit have been removed and the pit is now part of the Isaac Plains rehabilitation effort.



The following tables present the current status of Coal Resources estimated for all of Stanmore Coal's projects and the result of the mine planning work undertaken to define Coal Reserves and Marketable Coal Reserves within Stanmore Coal's portfolio of operating mines and projects.

**Table 3: Coal Resources for all Stanmore Coal Projects**

Stanmore Coal - Coal Resources, June 2019								
Project Name	Tenement	Coal Type *	Measured Resources	Indicated Resources	Inferred Resources	Total Resources	Competent Person	Report Date
Isaac Plains	ML 70342, ML 700018, ML 700019	C,T	22.2	21.3	9	52	A	May-18
Isaac Plains East	ML 700016, ML 700017, ML 700018, ML 700019	C	12.9	8.8	8	30	A	May-18
Isaac Downs	MDL 137, EPC 728	C, PCI	17.0	12.0	4	33	B	Dec-18
Isaac South	EPC 755	C, T	11.9	14.5	25	52	C	Jun-18
<b>Isaac Plains Complex</b>	<b>Sub Total</b>		<b>64.0</b>	<b>56.6</b>	<b>46</b>	<b>167</b>		
Clifford	EPC 1274, EPC 1276	T	0.0	200.0	430	630	D	Aug-16
The Range	EPC 1112, EPC 2030	T	18.1	187.0	81	286	A	Oct-12
<b>Surat Basin Complex</b>	<b>Sub Total</b>		<b>18.1</b>	<b>387.0</b>	<b>511</b>	<b>916</b>		
Mackenzie	EPC 2081	C, T	0.0	25.7	117	143	A	Nov-11
Belview	EPC 1114, EPC 1186, EPC 1798	C, PCI	0.0	50.0	280	330	A	Mar-15
Tennyson	EPC 1168, EPC 1580	T	0.0	0.0	139	139	A	Dec-12
Lilyvale	EPC 1687, EPC 2157	C	0.0	0.0	33	33	A	Feb-19
<b>Total Coal Resources</b>	<b>Sub Total</b>		<b>82.1</b>	<b>519.3</b>	<b>1126</b>	<b>1728</b>		
<b>* Coal Types Potential Legend</b>			<b>Competent Person</b>					
C - Coking Coal, semi-soft or greater potential			A - Troy Turner - Xenith					
PCI - Pulverised Coal Injection			B - James Knowles - Measured Group					
T - Export Thermal grade			C - Mal Blaik - JB Mining					
			D - Oystein Naess - Xenith					
<p>Note 1: All Coal Resources are reported under The Australasian Code for Reporting of Exploration Results, Mineral Resources and Ore Reserves ('the JORC Code') applicable at the time each report was published. Reports dated 2012, and earlier, used the JORC 2004 version, reports dated after 2012 reported against the requirements of the 2012 JORC code. None of the resources reported under JORC 2004 have been updated to comply with JORC 2012 on the basis that the information has not materially changed since it was originally reported.</p> <p>Note 2: For all Resources reported under the JORC 2012 Code, Stanmore confirms that it is not aware of any new information or data that materially affects the information included in this announcement and in the case of each of the reported JORC 2012 estimates of coal resources, that all material assumptions and technical parameters underpinning the estimates provided in this announcement continue to apply and have not materially changed</p> <p>Note 3: Rounding to the nearest significant figure is applied to Total Resource Tonnes in the Inferred Category. This is deemed conservative and reflective of the Inferred Resource category confidence level and accounts for the minor differences in the overall total reported resources.</p> <p>Note 4: All Coal Resources are reported on a 100% basis; Stanmore Coal's economic interest in Clifford is 60%, Mackenzie is 95%, and Lilyvale is 85%, all other tenure is 100% owned by Stanmore Coal.</p>								

Table 4: Coal Reserves and Marketable Coal Reserves for all Stanmore Coal's Projects

Stanmore Coal - Coal Reserves, June 2019																										
Project Name	Tenement	Coal Reserves			Marketable Reserves			Competent Person	Report Date																	
		Proved	Probable	Total	Proved	Probable	Total																			
Isaac Plains Open-cut	ML 70342	1.0	0.1	1.1	0.7	0.0	0.7	E	Aug-19																	
Isaac Plains East Open-cut	ML 700016, ML 700017, ML 700018, ML 700019	9.4	2.6	11.9	7.2	2.0	9.2	E	Aug-19																	
Isaac Plains Underground	ML 70342, ML 700018, ML 700019	0.0	12.9	12.9	0.0	9.4	9.4	F	Apr-18																	
Isaac Downs	MDL 137, EPC 728	17.0	7.5	24.5	11.2	4.6	15.8	E	Dec-18																	
<b>Isaac Plains Complex</b>	<b>Sub Total</b>	<b>27.3</b>	<b>23.1</b>	<b>50.4</b>	<b>19.1</b>	<b>16.0</b>	<b>35.1</b>																			
The Range	EPC 1112, EPC 2030, MLA 55001	0.0	116.6	116.6	0.0	94.2	94.2	G	Jul-11																	
<b>Total Coal Reserves</b>	<b>Sub Total</b>	<b>27.3</b>	<b>139.7</b>	<b>167.0</b>	<b>19.1</b>	<b>110.2</b>	<b>129.3</b>																			
<table border="0"> <tr> <td><b>Coal Type Ratio - Coking:Thermal (% of Marketable Coal Reserve)</b></td> <td><b>Competent Person</b></td> </tr> <tr> <td>Isaac Plains OC</td> <td>69%:31%</td> <td>E - Tony O'Connell - Optimal / Measured Group</td> </tr> <tr> <td>Isaac Plains East OC</td> <td>98%:2%</td> <td>F - Mark McKew - Geostudy</td> </tr> <tr> <td>Isaac Plains Underground</td> <td>88%:12%</td> <td>G - Richard Hoskings - Minserve</td> </tr> <tr> <td>Isaac Downs</td> <td>100% Coking</td> <td></td> </tr> <tr> <td>The Range</td> <td>100% Thermal</td> <td></td> </tr> </table>										<b>Coal Type Ratio - Coking:Thermal (% of Marketable Coal Reserve)</b>	<b>Competent Person</b>	Isaac Plains OC	69%:31%	E - Tony O'Connell - Optimal / Measured Group	Isaac Plains East OC	98%:2%	F - Mark McKew - Geostudy	Isaac Plains Underground	88%:12%	G - Richard Hoskings - Minserve	Isaac Downs	100% Coking		The Range	100% Thermal	
<b>Coal Type Ratio - Coking:Thermal (% of Marketable Coal Reserve)</b>	<b>Competent Person</b>																									
Isaac Plains OC	69%:31%	E - Tony O'Connell - Optimal / Measured Group																								
Isaac Plains East OC	98%:2%	F - Mark McKew - Geostudy																								
Isaac Plains Underground	88%:12%	G - Richard Hoskings - Minserve																								
Isaac Downs	100% Coking																									
The Range	100% Thermal																									
<p>Note 1: All Coal Resources are reported under The Australasian Code for Reporting of Exploration Results, Mineral Resources and Ore Reserves ('the JORC Code') applicable at the time each report was published. Reports dated 2012, and earlier, used the JORC 2004 version, reports dated after 2012 reported against the requirements of the 2012 JORC code. None of the reserves reported under JORC 2004 have been updated to comply with JORC 2012 on the basis that the information has not materially changed since it was originally reported.</p> <p>Note 2: For all Reserves reported under the JORC 2012 Code, Stanmore confirms that it is not aware of any new information or data that materially affects the information included in this announcement and in the case of each of the reported JORC 2012 estimates of coal reserves, that all material assumptions and technical parameters underpinning the estimates provided in this announcement continue to apply and have not materially changed</p> <p>Note 3: Totals may not be exact due to significant figure rounding.</p> <p>Note 4: The Reserves quoted for The Range project were established in 2011 under the relevant JORC Code at the time and used a coal price of A\$120/tonne for benchmark NEWC thermal coal equivalent. These Reserves were supported by a Feasibility Study that assumed the completion of the Surat Basin rail to connect the mine to the Port of Gladstone.</p> <p>Note 5: All Coal Reserves are reported on a 100% basis, and Stanmore Coal's economic interest in the tenure above is 100%.</p> <p>Note 6: The IP &amp; IPE Coal Reserves above, are based upon the May 2018 Coal Resource Report. This May 2018 Resource Report does not include a reduction due to mining depletion during FY19 of approximately 3 Million tonnes</p> <p>Note 7: The Isaac Downs Reserves are reported as 65% semi-hard coking coal and 35% pulverised coal injection (PCI)</p>																										

Figure 1 (attached) illustrates all the tenement areas held in Queensland and Figure 2 (attached) illustrates the tenements that form part of the Isaac Plains Complex.

Yours faithfully

**Ian Poole**  
Company Secretary

**For further information, please contact:**

**Dan Clifford**  
**Managing Director**  
07 3238 1000

**Ian Poole**  
**Chief Financial Officer & Company Secretary**  
07 3238 1000

**About Stanmore Coal Limited (ASX: SMR)**

Stanmore Coal operates the Isaac Plains coking coal mine in Queensland's prime Bowen Basin region. Stanmore Coal owns 100% of the Isaac Plains Complex which includes the original Isaac Plains Mine, the adjoining Isaac Plains East (operational), Isaac Downs (open cut mine project) and the Isaac Plains Underground Project. The Company is focused on the creation of shareholder value via the efficient operation of the Isaac Plains Complex and the identification of further development opportunities within the region. In addition, Stanmore Coal holds a number of high-quality development assets (both coking and thermal coal resources) located in Queensland Bowen and Surat basins.

**Competent Person Statement**

The information in this announcement is published and based on information compiled by the relevant Competent Person as described and defined under the JORC Code. Each Competent Person is a member of the Australian Institute of Mining and Metallurgy and have consented to the publication of the relevant Resource or Reserve as indicated on the attached tables. Each Competent Person has sufficient experience which is relevant to the style of mineralisation and type of deposit under consideration and to the activity which he is undertaking, to qualify as Competent Person as defined in the JORC Code. Each Competent Person consents to the inclusion in this announcement/report of the matters described, in the form and context in which it appears.

**Stanmore Coal Limited ACN 131 920 968**

p: +61 7 3238 1000  
f: +61 7 3238 1098

[info@stanmorecoal.com.au](mailto:info@stanmorecoal.com.au)  
[www.stanmorecoal.com.au](http://www.stanmorecoal.com.au)

Level 8, 100 Edward Street, Brisbane QLD 4000  
GPO Box 2602, Brisbane QLD 4001



Figure 1: Stanmore Coal current tenements in Queensland

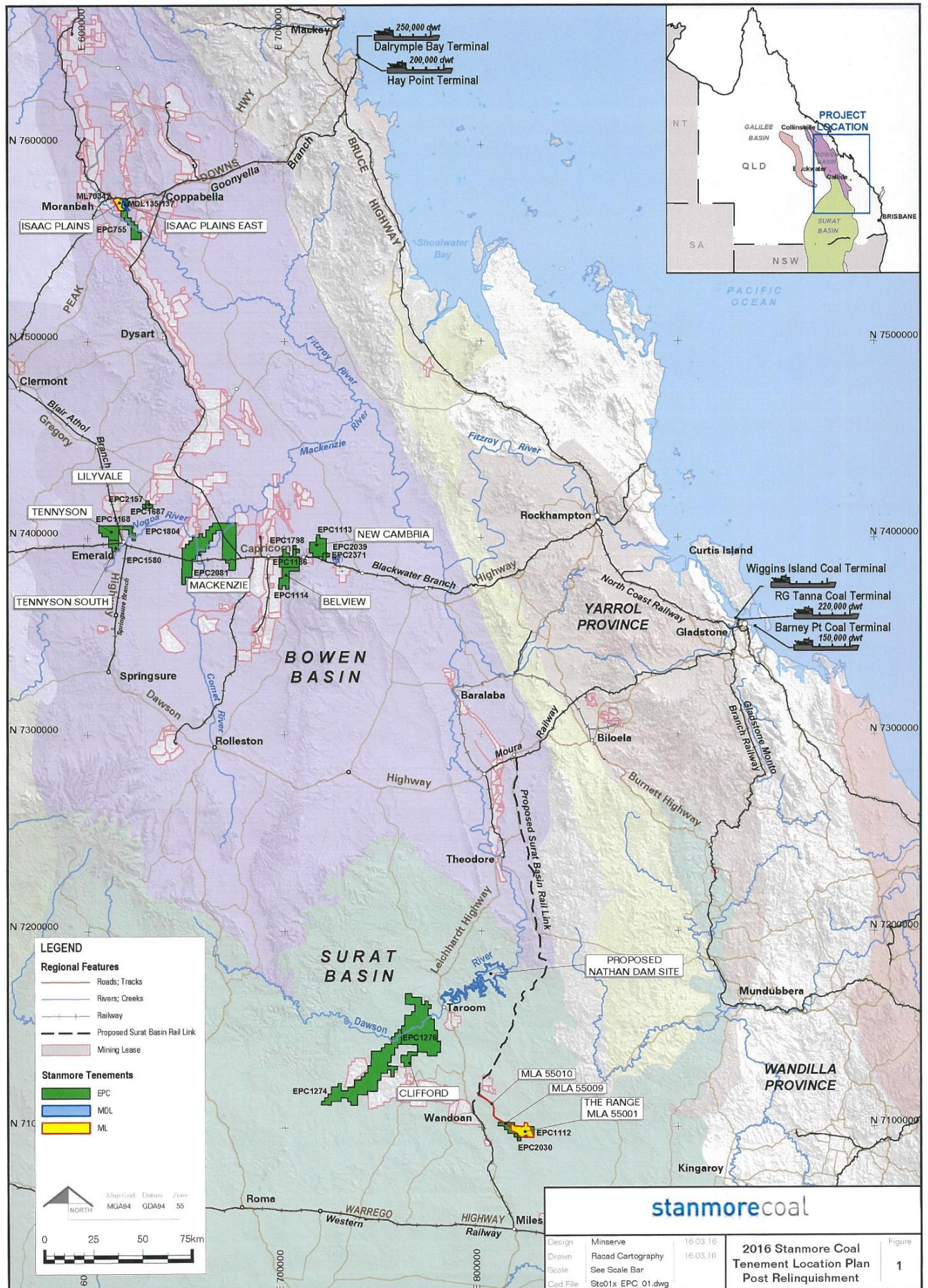




Figure 2: Isaac Plains Complex with the two Stanmore Coal projects located to the south - Isaac Downs and Isaac South

