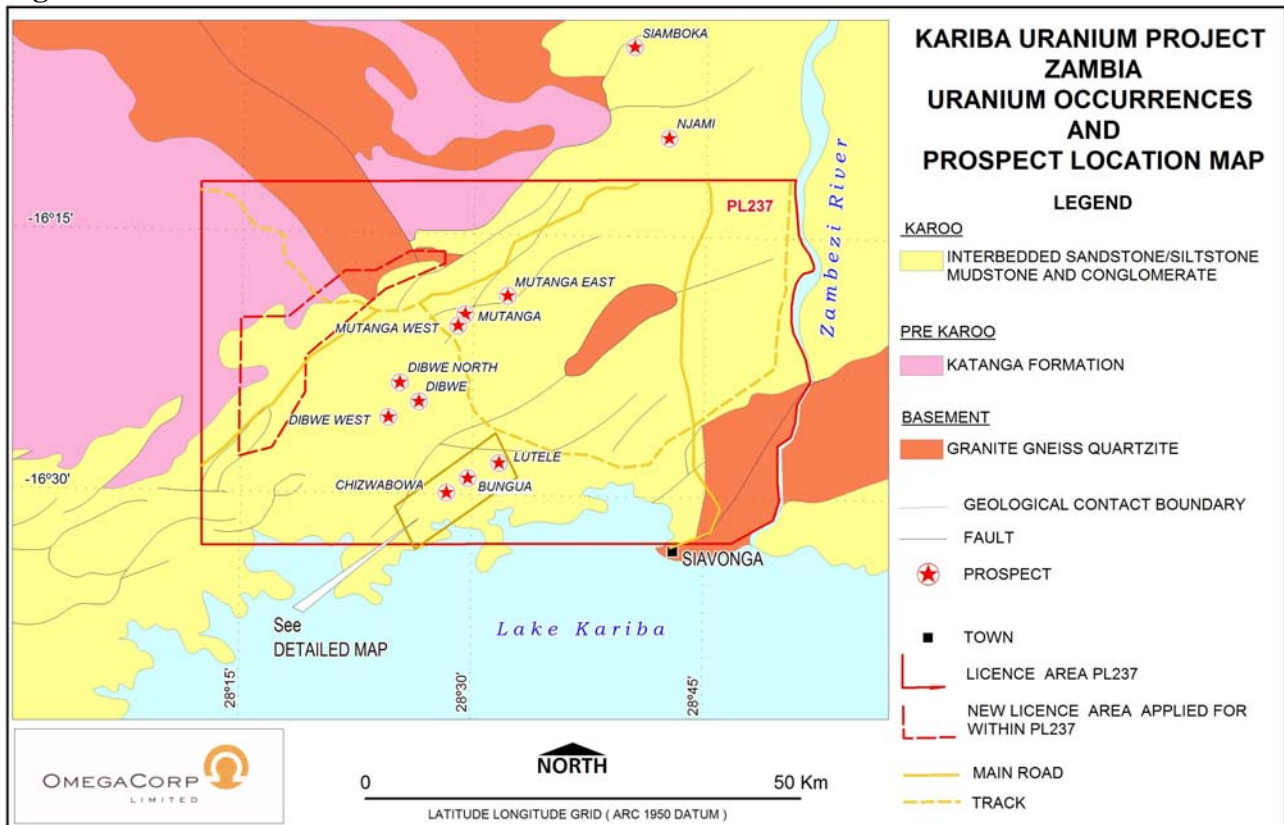


Introduction

Uranium was first identified in the area in 1957 after a car borne survey located six anomalous areas in the vicinity of Bungua Hill, west of Siavonga. Bungua comprises six prospects and from west to east these are defined as Chizwabowa, Kaumpwe A, B, C, D, and Lutele (Figure 2). These prospects cover approximately 7.5 kilometres of strike of the northeast/southwest trending Escarpment Grit Formation. Drilling is known to have occurred in at least two areas, which combined cover a strike length of approximately half that of the Mutanga Deposit and these are discussed below.

Figure 1



Kaumpwe A

Kaumpwe A is located toward the western end of the Bungua ridge. The GSZ completed both percussion and diamond drilling in this area covering approximately 500 x 300m. Data has been received for 63 percussion holes for 1901m of drilling to a maximum depth of 41m over this area. All but four of the holes contained mineralised intercepts, with 46 holes recording two or more mineralised zones. The mineralisation is shallow, with the deepest intersected at 35m and 65% of the known mineralisation being within 20m of surface. Selected intercepts include:

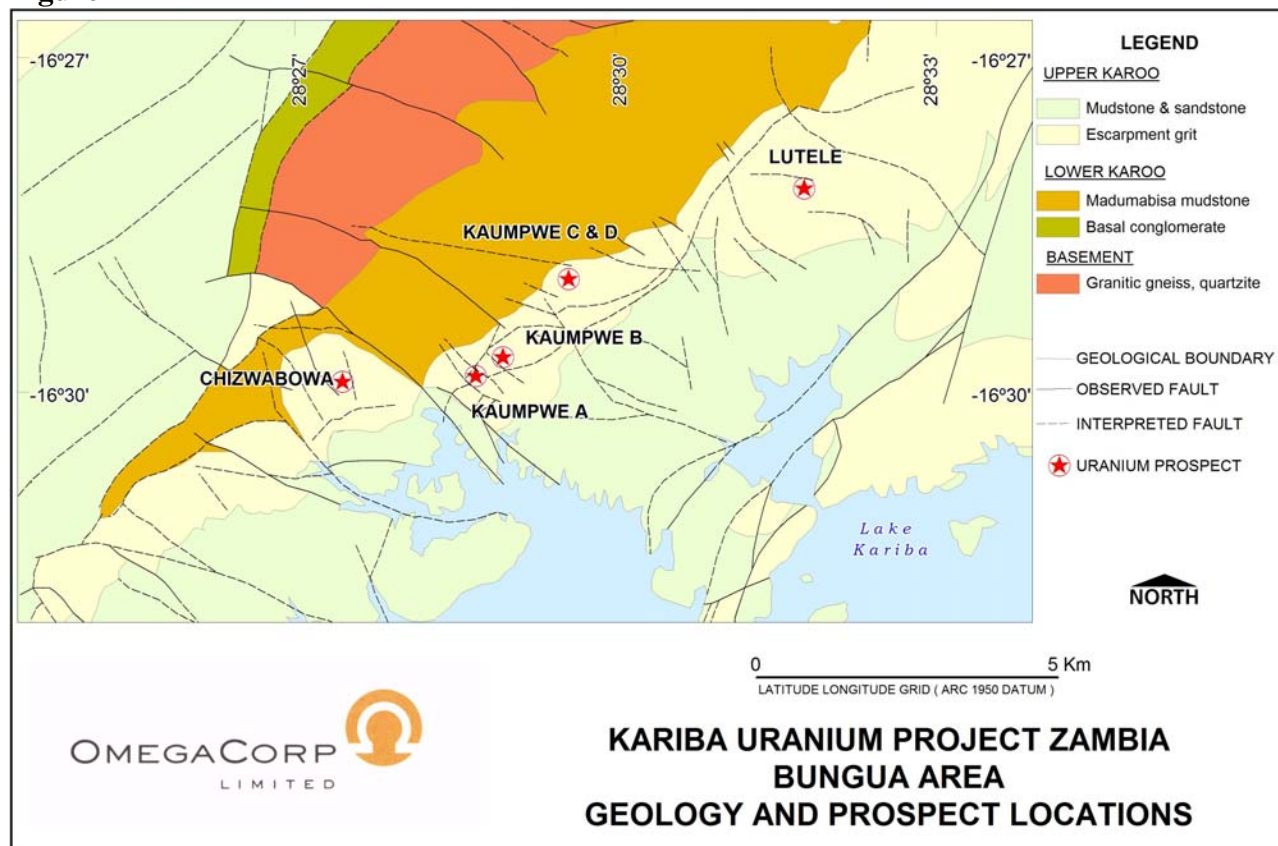
- 3.15m @ 0.11% (1.1 kg/t) U_3O_8 from 7m down hole in hole 7
- 1.43m @ 0.21% (2.1 kg/t) U_3O_8 from 3m down hole in hole 14
- 2.56m @ 0.15% (1.5 kg/t) U_3O_8 from 16m down hole in hole 56
- 0.36m @ 0.92% (9.2 kg/t) U_3O_8 from 12m down hole in hole 61
- 2.57m @ 0.1% (1 kg/t) U_3O_8 from 26m down hole in hole 71
- 2.34m @ 0.11% (1.1 kg/t) U_3O_8 from 26m down hole in hole 76

The company recently took a number of surface samples (see ASX release dated 16 February 2006) from sandstones and conglomerates containing mineralisation as disseminations and replacements in the area. Comparison of assays with GSZ data indicates that the recent sampling broadly correlates with high assays in adjacent drill holes. In some instances the recent surface samples were higher than the adjacent drill intercepts.

Kaumpwe B

Kaumpwe B is located approximately one kilometre to the east of Kaumpwe A and was the focus of small drill program, in an area of approximately 100 x 100 metres. A total of twenty holes were drilled on six sections 20 metres apart for a total of 616m. All but one of the holes contained mineralised zones, with seventeen holes recording three or more mineralised intercepts. All of the mineralisation is shallow, with 66% of the mineralised zones occurring within twenty metres of the surface. The highest recorded value was 1.61% (16 kg/t) U_3O_8 over 0.22m from 9m in hole 46 in hole. Other notable intercepts include 0.5m @ 0.36% (3.6 kg/t) U_3O_8 from surface in hole 32; 9m @ 0.05% (0.5 kg/t) U_3O_8 from 6m in hole 50 and 0.96m @ 0.12% (1.2 kg/t) U_3O_8 from 23m in hole 23.

Figure 2



Summary

The Company notes that obtaining this data is another important step in the advancement of the resource base at Kariba. It further highlights the potential of the Project to yield zones of outcropping, shallow mineralisation.

Work will continue to advance these results to resource status and assess the remaining seven kilometres of strike at the Bungua Prospect. The Company is continuing with its efforts to locate historical data for Dibwe West and Dibwe North, both extensively drilled by AGIP in the anticipation that these areas will also yield zones of significant mineralisation.

Scoping studies are continuing on the Mutanga and Dibwe prospects to assess their economic viability with a view to progressing the Company to production and an early cash flow.

The information in this report that relates to Exploration Results, Mineral Resources or Ore Reserves is based on information compiled by Mr. Matthew Yates, who is a Member of The Australian Institute of Geoscientists (AIG). Mr. Yates is a full-time employee of Beacon Exploration Pty Ltd, a consultant of OmegaCorp Limited. Mr. Yates has sufficient experience which is relevant to the style of mineralisation and type of deposit under consideration and to the activity which he is undertaking to qualify as a Competent Person as defined in the 2004 Edition of the 'Australasian Code for Reporting of Exploration Results, Mineral Resources and Ore Reserves'. Mr. Yates consents to the inclusion in the report of the matters based on his information in the form and context in which it appears.